



LogTag[®] Online

Connection Wizard

Quick Start Guide

Version B.

Quickstart Guide Contents

Introduction	3
Downloading the Connection Wizard software	4
Running the Connection Wizard	5
LogTag Online Account Integration	6
Running the Connection Wizard continued...	7
Connecting to your WiFi Network	8

Introduction

Getting started with your LogTag WiFi device is quick and easy thanks to the LogTag Online Connection Wizard. This quickstart guide assumes you have configured your device (does not apply to WiFi Interface Cradles) via LogTag Analyzer and are ready to connect it to your WiFi Network.

Important: LogTag WiFi devices require an active account with LogTag Online, a secure, cloud-based data repository, management and analysis system for the LogTag product range. Creating an account is quick, easy and free. Please see the section below on how to sign up.

What you need before getting started:

- A LogTag WiFi device, connected to your computer with the USB cable supplied.
- If it's a WiFi Logger such as the UTRED30-WiFi, ensure you have configured it with LogTag Analyzer before running the WiFi Wizard.
- Have your WiFi Network name and password handy. Ask your IT Administrator if you are unsure.
- A LogTag Online Account. If you don't have one, sign up is quick and free by clicking on the following link: <https://logtagonline.com/signup>

Once you have all of the necessary information and device(s) ready, proceed to the next section of this guide for instructions on how to download the LogTag Online Connection Wizard.

• END OF SECTION

Downloading the Connection Wizard software

To download the LogTag Online Connection Wizard, please click the link below to begin the download:

 <https://logtagrecorders.com/wp-content/uploads/connectionwizard.exe>

If you have issues with the link above, you can download the .zip version instead and ensure you unzip the file before running it via the link below:

 <https://logtagrecorders.com/wp-content/uploads/connectionwizard.zip>

Warning: Please ensure no other LogTag software is currently running on your computer before running the Wizard software.

This software doesn't require any setup or installation. Simply double-click the connection-wizard.exe file that you downloaded.

Note: If you have LogTag Analyzer, open LogTag Analyzer and select 'Connection Wizard' from the 'LogTag Online' menu anytime to run the Connection Wizard. For more information, please refer to the [LogTag Analyzer User Guide](#).

Running the Connection Wizard

Please ensure there is internet connection on your computer prior to starting this process.

The first page of the Wizard will be displayed. When you're ready to begin, click **“Start”**.



You will be asked to sign in to your LogTag Online account (covered in the next section).

If you do not have an account, click the link below or alternatively, open your browser, type the following link into the address bar and follow the on-screen instructions or click 'Create a LogTag Online Account' link.

<https://logtagonline.com/signup>

LogTag Online Account Integration



LogTag® Online Connection Wizard

Sign in to your LogTag® Online Account below and the Wizard will assist in registering your WiFi device(s). If you do not have an account, click "Create an Account". Return to this Wizard when your account setup is complete.

EMAIL

PASSWORD

[Forgot your Password?](#)

[Create a LogTag® Online Account](#)

[Help](#) Ver: 1.0.6.4

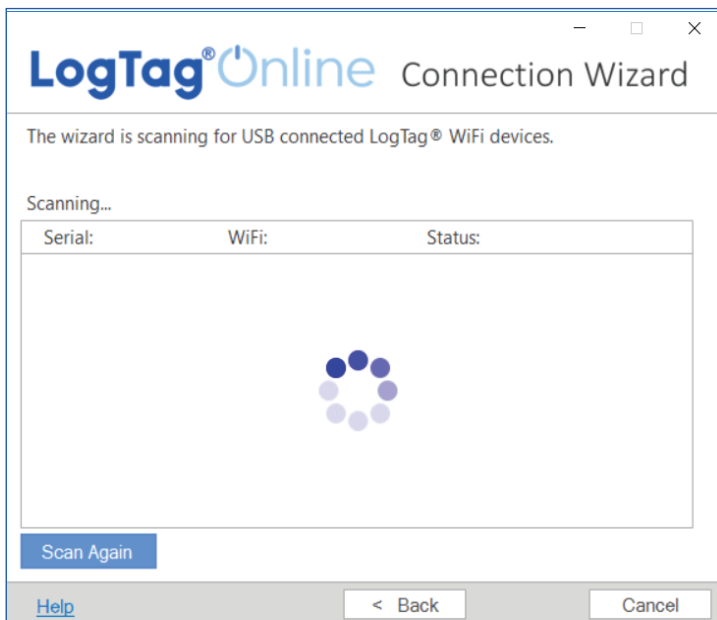
- If you have already created a LogTag Online account, enter your email and password in the fields provided then click **"Sign In"**.
- If you have not yet created an account, click the link near the bottom **"Create a LogTag Online Account"** to be taken to the account creation page and return to the wizard once you have created and validated your email.
- If you have an existing account but have forgotten your details, you can reset your password by clicking the **"Forgot your Password"** link and following the on-screen instructions or the link below:
<https://logtagonline.com/emailpassreset>

If you have an existing account and have previously been invited to one or more teams, a dialogue will appear after you have signed in to select which Team you wish to register the device to. Simply select your desired team from the dropdown menu and click "Next" to continue.

Note: If you 'Skip' this step, you will need to manually register the device on LogTag Online or repeat the LogTag Online Connection Wizard.

Running the Connection Wizard continued...

You have now created your account and is now ready to set up connection of your WiFi device to the WiFi network.



The Wizard will now scan for any connected LogTag devices.

If the scan doesn't find any devices, double-check the device is plugged in to your computer with the USB cable provided and click "Scan Again".

Scanning...		
Serial:	Configured WiFi:	Status:
A0A100003550	LogTag24	Registering

As soon as a device has been identified, it will appear in the table (left) and automatically register that device to your LogTag Online account.

Connecting to your WiFi Network

Serial:	Configured WiFi:	Status:
AOA10000355O	LogTag24	Registered

The Status will turn green with the text “Registered” once complete.

If one or more device(s) are identified and registered, the screen automatically switches to the next screen

1. Network settings are automatically populated from PC settings by default, if it can be discovered. Alternatively, click the Network Name arrow to see nearby Wireless

Networks options and select your WiFi Network from the list and type the password for the network. **Remember that passwords are case-sensitive.**

Note: If you need to make any Advanced Network setting changes, select the 'Advanced Settings' box.

2. Once you have provided the chosen network and password, or Advanced Network settings, click **“Next”**.

Note: Some WiFi Networks won't appear in this list for security purposes. If you are aware that your network is one of these, you can manually type the name of your network (SSID) in the Network Name field instead of clicking the menu arrow.



The device is now being configured with the WiFi details you provided in the previous screen, which typically takes 10 seconds.

The Connection Wizard is now checking that the WiFi device can connect to your WiFi network and to LogTag Online...



Once the Wizard displays “Connection Succeeded”, click “**Close**” to close the Wizard or click the 'LogTag Online Sign In page' link to take you to LogTag Online website.

With the successful message showing for your device, click “Next” to complete the Wizard. You will be given the options to run the Wizard again to repeat the configuration process from the beginning, sign into LogTag Online by clicking the “Sign In page” link or click “Close” to close the Wizard.