

DeskCabby Charge Only

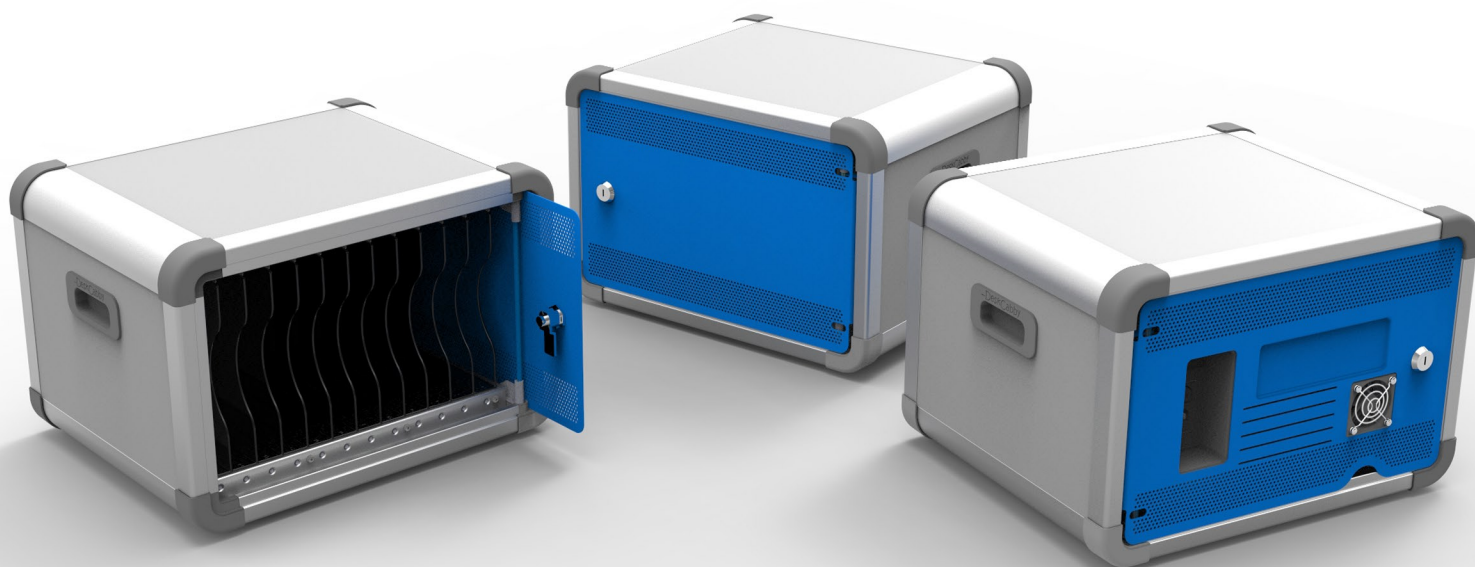
New thinking in ICT storage

DeskCabby Charge & Sync

New thinking in ICT storage

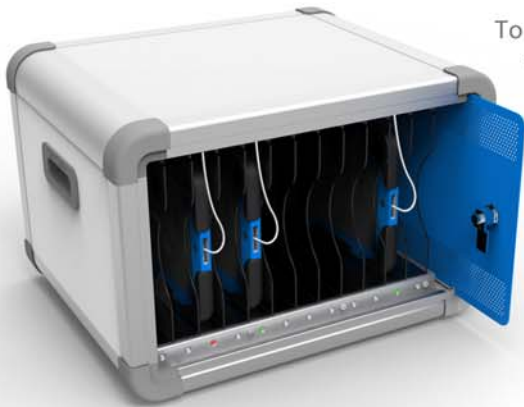
Instructions

Charging & Synchronising
Units



Loading / Initial Setup Guide - DeskCabby CO & DeskCabby C&S

The DeskCabby Charge & Sync unit is designed to charge & sync applications (apps) on up to 12 compatible USB devices. Follow the steps below for the initial setup of your DeskCabby.



To **UNLOCK** the front door - use the key provided to turn the cam lock anti-clockwise located on the front door. It is advised to remove the keys when the unit is not in use.

To **UNLOCK** the rear door - use the same keys provided to unlock the front door, turn the key clockwise. It is advised to remove the keys when the unit is not in use.

Installing tablets in DeskCabby:

1. Place tablets between the clear dividers in the main storage area of the unit, access made through the front door. **(Fig 1)**
2. Push all USB cables through the cable guide from the front of the unit located under the top panel. Continue to thread the cable through until the USB connection drops off the other side. **(1 cable per slot).**
3. Once the USB cables have been pushed through the cable guide connect all the cables to the USB board on the rear panel. Access is made through the rear door. **(Fig 2)**
4. Plug the device cables into the tablets and adjust the cable lengths to suit. Use the cable guide to bundle and store excess cable. **(Fig 3)**
5. Plug the IEC mains lead supplied with your DeskCabby into the mains outlet to power the unit. **(Fig 4)**



Fig. 1

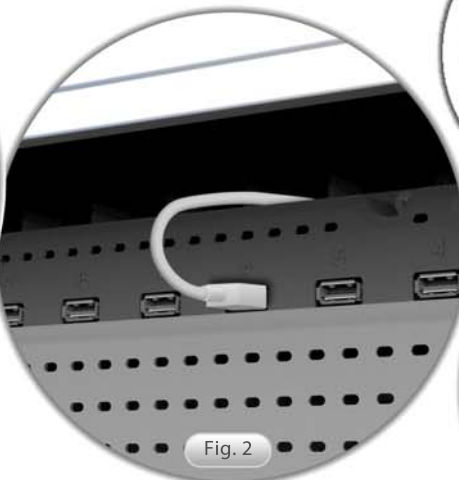


Fig. 2



Fig. 4

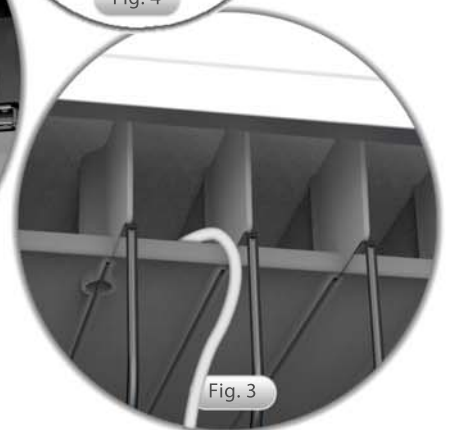


Fig. 3

The charging of USB devices can be performed at any time as long as the DeskCabby is under constant power via the mains power inlet. Charging will only stop when either the DeskCabby has been disconnected from the mains or devices have been removed.

User / Setup Guide DeskCabby Charge & Sync Only

Syncing applications to devices via DeskCabby Charge & Sync

Before carrying out the sync process ensure a host computer (ie laptop or desktop PC/Mac) has the appropriate sync software. Please contact the device manufacturer for the correct software to use. Note: when carrying out this process the sync software must be enabled. (eg. Apple Configurator)

Firstly connect the DeskCabby Charge & Sync to a host computer via the USB 'B' connection port shown in (Fig 5). You will need a USB 'A' plug to 'B' plug cable to make connection (Fig 6). When connected, the DeskCabby Charge & Sync will switch all 12 USB ports from the charging function to the sync function. Devices connected to the DeskCabby Charge & Sync via the USB port will be visible to the host computer and the sync process can be performed. When syncing has been completed disconnect the DeskCabby Charge & Sync from the host computer, this will switch the USB ports back to the charging function. The sync function can be performed at any time as long as a host computer is connected the DeskCabby Charge & Sync via the USB 'A' plug to 'B' plug cable.



Status of Devices

On power up the LED lights located along the base of the aluminium tray (inside the storage area of the unit) will illuminate white. After a short time the LED's will switch off. Depending on the amount of devices connected on power up will determine how many of the LED's remain visible. For example if all 12 USB ports were occupied all 12 LED's will illuminate.

Devices that are connected which are charging, the LED will illuminate solid Red. Device that are connected which are fully charged, the LED illuminate solid Green. When the DeskCabby Charge & Sync is in a 'Sync' function all LED's will switch to solid Blue for all connected devices.



'Charging'



'Fully Charged'



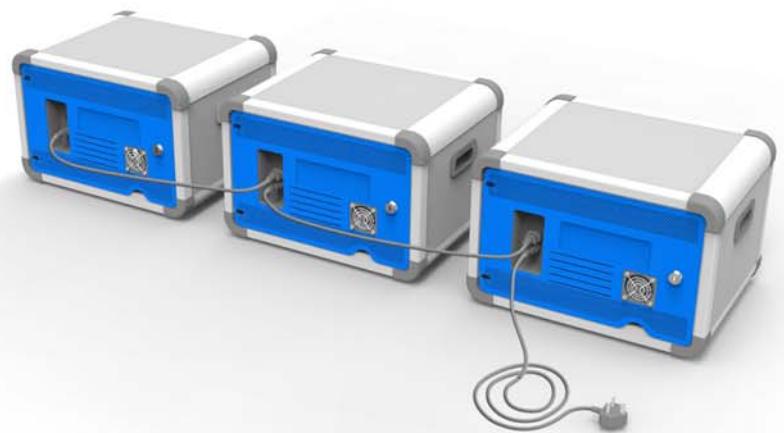
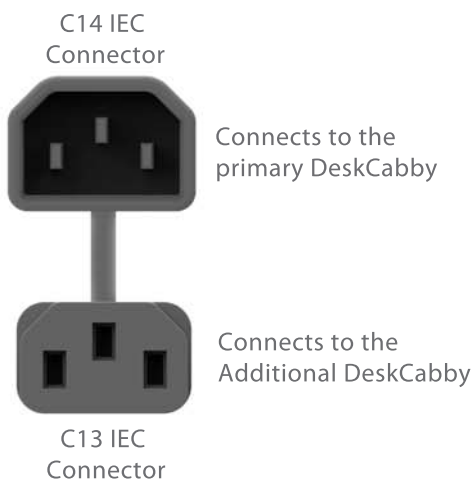
'Syncing'

Connecting additional DeskCabby units

To connect additional DeskCabby units use the C13 to C14 IEC cable (Fig 7) and plug into the double IEC socket on both units (Fig 2). Plug the C13 connector into the first unit and the C14 connector to the second unit.

To connect a third unit repeat the process above, linking the second and third unit. together.

Important: A maximum of 3 DeskCabby units can only be connected at one time.



Important Note: Tablets must be in 'Auto lock' mode (ie. screens switched off) when charging. Failure to switch screens off will prevent tablets from charging and generate excess heat, potentially damaging the tablets

General Safety Precautions

There are no serviceable parts inside the DeskCabby electronic mouldings. The DeskCabby mouldings enclose high voltage electrical and electronic components, under no circumstances should the front case be removed, only trained personnel are allowed access to the inside of the DeskCabby unit.

Under no circumstances should the air vents on the DeskCabby be covered.

The DeskCabby is designed for re-charging and syncing purposes only. This unit is specifically designed for use of tablets and their factory supplied USB cables, they should not be used with any other equipment. Using the DeskCabby apparatus for recharging or powering any other equipment will invalidate the warranty.

Ensure doors are always closed and locked when the unit is not in use, forcing the doors beyond 90° will cause damage to the hinges.

To avoid risk of electric shock or fire the unit should only be used by a competent adult.

This appliance is not intended for use by persons (including children) with reduced physical, sensory or mental capabilities, or lack of experience and knowledge, unless they have been given supervision or instruction concerning use of the appliance by a person responsible for their safety.

Children should be supervised to ensure that they do not play with the appliance.

The mains power lead must not be pulled when the DeskCabby is under power as this could damage critical components. When transporting the DeskCabby the mains power lead must be disconnected from the IEC connection socket.

Inspect the plug and power lead on a daily basis, if the plug and power lead is damaged, it must be replaced by the manufacturer, its service agent or similarly qualified persons in order to avoid a hazard.

The DeskCabby apparatus should be used in a dry environment and at normal room temperatures. No water or moisture must be allowed into the unit. The DeskCabby is intended for indoor use only.

Always disconnect the DeskCabby from the wall outlet before altering the USB cable configuration or moving the unit.

Before any cleaning of the plastic casing the IEC mains lead must be removed from the mains wall socket and the IEC connector socket. If tablet devices are connected to the DeskCabby these and their factory supplied cables must also be removed from the apparatus. Cleaning of the plastic casing should only be done using a clean dry cloth. No liquid detergents or aerosol cleaners are to be used as these could damage internal components.

Correct disposal of this product:



This marking indicates that this product should not be disposed with other household wastes throughout Australia, Europe and the US. To prevent possible harm to the environment or human health from uncontrolled waste disposal, recycle it responsibly to promote the sustainable reuse of material resources. To return your used device, please use the return and collection systems or contact the retailer where the product was purchased. They can take this product for environmentally safe recycling.

Technical Data Sheet

Degree of protection against ingress of solid objects, dust and water:
IPX0

Degree of protection against electric shock: **Insulation-encased Class I control**

Degree of pollution: **2**

Nature of supply: ~

Rated mains supply voltage: **115V - 230V (Aus, Euro, Italian, South African, UK & US)**

Rated frequency: **50Hz - 60Hz (Aus, Euro, Italian, South African, UK & US)**

Max current: **6.6A**

Unit fitted with a fused IEC socket

Fuse type to be used: T10AH250V (Time Lag Ceramic 10A fuse)

Rated impulse to withstand voltage: **2.5KV**

Type of power connection:

UK: Detachable mains power lead with UK 3 pin plug and C13 Connector

Aus: Detachable mains power lead with Australia 3 pin plug and C13 Connector (AS/NZS 3112:2004)

Euro: Detachable mains power lead with Schuko type plug and C13 Connector

Italian: Detachable mains power lead with CEI 23-15/V11 plug and C13 Connector

US: Detachable mains power lead with Nema 5 - 15P and C13 Connector

South Africa: Detachable mains power lead 15 amp round 3 pin plug and C13 Connector

Min. conductor size: **Italian: 1.0mm²**

US: 1.31mm²

UK, Australian, Euro and South Africa: 1.5 mm²

Operating Temperature:

We recommend an operating temperature of 0°C - 25°C (32°F - 77°F)



**DANGER!
RISK OF ELECTRIC SHOCK
DANGER! ELECTRICAL CORDS
CAN BE HAZARDOUS
MISUSE CAN RESULT IN FIRE
OR DEATH BY ELECTRIC SHOCK**

