



Many of our Multi-media products have been indoor air quality certified. Find out more on our web site or call.

# Touchboards

205 Westwood Ave, Long Branch, NJ 07740  
Phone: 866-94 BOARDS (26273) / (732)-222-1511  
Fax: (732)-222-7088 | E-mail: sales@touchboards.com



### Convenient Security!

The Secure Laptop Locker provides ventilated laptop security for up to 8 laptops per module. It is designed to be bolted to the floor and/or wall to provide the ultimate in laptop antitheft security.

The Secure Laptop Locker is constructed of 16 gauge steel and laptops within are protected by a double-bolt lock to provide vault-like laptop security. Once opened, the laptops slide out on a tray with built-in cord management, making laptops easy to retrieve and easy to set back inside.

- 55101 B - Black locker
- 55102 - Work surface
- 55103 - Anti-microbial locker



# Secure Laptop Locker

**Secure storage for 8 laptops per locker**  
 The Secure Laptop Locker is modular so that units can be bolted together for expansion needs. An optional work surface is available to add an elegant touch or to provide for an additional writing surface.

**NOTE:** Units can be stacked up to three high and bolted together. For security and stability reasons, each unit must be fastened together and bolted to either the floor or the wall.

Laptop Management



Notice: We have built a wire management tray into each storage/recharging module. A packaged 8-outlet power strip is provided with each module (shown above).

**Advantages:**

- ▲ Perfect for libraries, labs, and study lounges where laptops need to be quickly checked out by individuals
- ▲ Each unit contains one storage/recharging module and an eight-outlet power strip in the wire management tray
- ▲ Modules are interchangeable with Harbor Cart Modules
- ▲ Exclusive dual-bolt lock provides security
- ▲ 16-gauge perforated top efficiently ventilated to facilitate "chimney effect" airflow cooling

**Useful options:**

- 55102 - Work surface in Wild Cherry (CH) or Indigo Organix (I) laminate
- 55103 - Locker in Gray/White (GW) anti-microbial finish
- 55193 - Side panels for laptop module
- 55142 - Replacement key set

**Locker components:**

**55102 I**  
 Optional work surface shown in Indigo Organix.



**55103 GW**  
 Locker in anti-microbial Gray/White finish.



**55101 B / 55102 CH**  
 A fully loaded Laptop Locker with work surface, ventilated door with dual-bolt lock, pull-out laptop module for eight laptops, and pull-out drawer for cord/wire management.



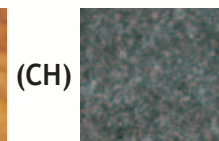
**55101 B / 55102 CH**  
 Laptop Locker with optional work surface, securely locked up. Notice the built-in handles for easy transporting to final destination.



**Standard colors:**  
 Laminate



Wild Cherry



Indigo Organix

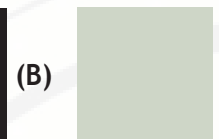
(CH)

(I)

**Steel**



Black



(B)

(GW)

\*Gray/White anti-microbial finish

\*Anti-microbial finish up-charge applies

**Dimensions:**

Overall (locker):  
 26<sup>7</sup>/<sub>8</sub>"W x 18<sup>1</sup>/<sub>8</sub>"D x 19<sup>3</sup>/<sub>4</sub>"H  
 Overall (optional work surface):  
 29"W x 20"D x 1"H

Cord/Wire management drawer:  
 19<sup>3</sup>/<sub>4</sub>"W x 14<sup>1</sup>/<sub>4</sub>"D x 2"H

Laptop slot size:  
 2<sup>1</sup>/<sub>4</sub>"W x 14<sup>3</sup>/<sub>4</sub>"D x 14"H



**To ensure proper clearance, check dimensions of laptops intended for use in this cart**

Discover more online ▶

