

Lascar Electronics UK
Telephone: +44 (0) 1794 884 567
Email: sales@lascar.co.uk

Lascar Electronics US
Telephone: +1 (814) 835-0621
Email: us-sales@lascarelectronics.com

Lascar Electronics HK
Telephone: +852 2389 6502
Email: saleshk@lascar.com.hk

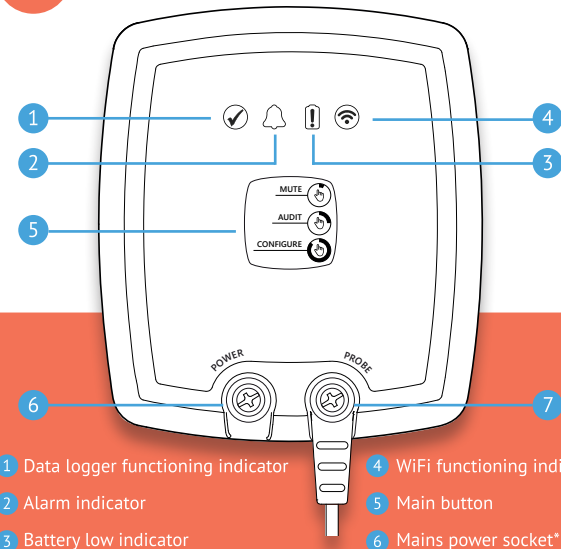


www.lascarelectronics/data-loggers

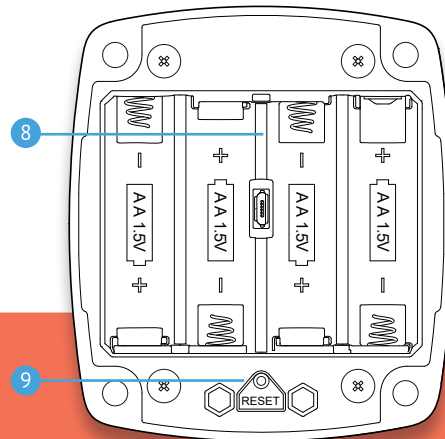


Issue 4 05/2021

7 Getting to know your EL-IOT data logger



- 1 Data logger functioning indicator
- 2 Alarm indicator
- 3 Battery low indicator
- 4 WiFi functioning indicator
- 5 Main button
- 6 Mains power socket*
- 7 Smart probe socket








- 8 Battery compartment
- 9 Reset button

*Mains power supply sold separately

8 Indicators and Sounder

The EL-IOT has four indicators and a sounder to clearly show its current status. The sounder is active whenever there is an alarm.



Indicator					
	Flashing	Flashing			Flashing
Status	Device in operation, no alarms or warnings	Alarm / Memory Full / Calibration Expired	Battery Low	WiFi Active	WiFi set up mode / not set up yet

9 Important Safety Information

WARNING: Failure to follow these safety instructions could result in fire, electrical shock, other injury or damage.

Repairing or modifying

Never attempt to repair or modify this product. Dismantling, may cause damage that is not covered under the warranty. Servicing should only be provided by an approved supplier. If the product has been punctured, or seriously damaged do not use it and return it to an approved supplier.

Power supply

Only use 1.5V AA alkaline batteries or a genuine EL-IOT power supply to power your EL-IOT data logger. Power supply sold separately.

Disposal and recycling

You must dispose of this product and batteries according to relevant laws and regulations. This product contains electronic components and therefore must be disposed of separately from household waste.

Caution: Do not leave product in direct sunlight. Risk of explosion if battery is replaced by an incorrect type. Dispose of used batteries according to the instructions.

The batteries must be removed before using the mains power supply.

EL-IOT
Wireless Cloud-Connected Data Logger



Your data, anytime, anywhere



Quick Start Guide

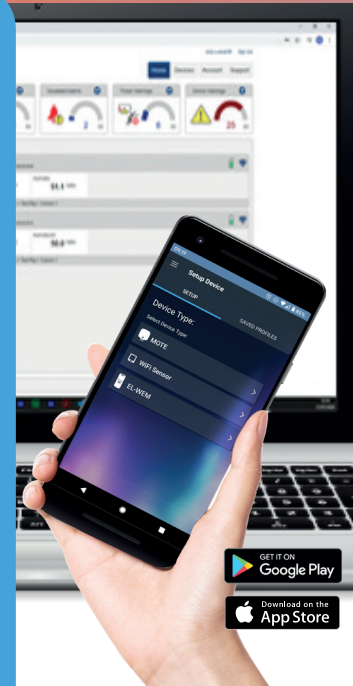
1



Set up a Cloud Account

To begin setting up your EL-IOT, you first need an EasyLog Cloud account.

- Visit easylogcloud.com and click Sign Up Now
- Download the EasyLog Cloud App onto your phone or tablet



2

Remove the mounting bracket

Slide the mounting bracket upwards to detach it from the EL-IOT device.



3

Remove the back cover

Use a cross-head screwdriver to unscrew the 4 screws that secure the back cover of the device.



Once the screws are removed, lift the back cover to reveal the battery compartment.

4

Install the batteries

Insert 4 x AA batteries into the battery compartment, taking care to place the batteries in the correct orientation. The sounder will beep when the batteries are first inserted.



5

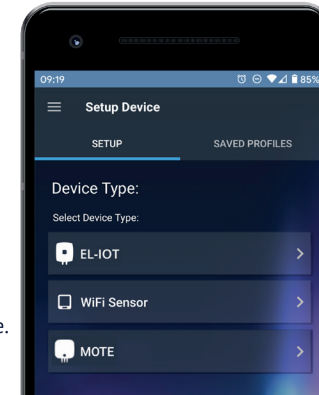
Connect to and configure in the Cloud

Sign in to the EasyLog Cloud App on your mobile device. Select "Setup Device" from the burger menu and follow the on-screen instructions to configure your EL-IOT.

Once your EL-IOT is connected to your WiFi network and EasyLog account, replace the battery cover and wall mount bracket. Setup is now complete. Install your device in the location you wish to monitor.

You can now view the EL-IOT's data and change settings either in the EasyLog Cloud App or by visiting your account at:

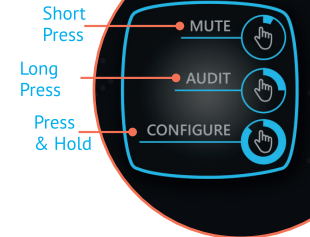
www.easylogcloud.com



6

Button Functions

The main button is used to control the EL-IOT's functions, some of which also create an audit event that can be viewed using the EasyLog Cloud App or website.



Button Press	Short Press < 1s	Long Press > 1s-8s	Press & Hold > 8s
Function	Mutes the alarm sounder	Acknowledges an alarm, creates an audit event in the record, forces data synchronisation with the Cloud	Activates Configuration mode to reconnect with the App