

# EL-CC-1-Range

## Cold Chain Data Logging Solutions



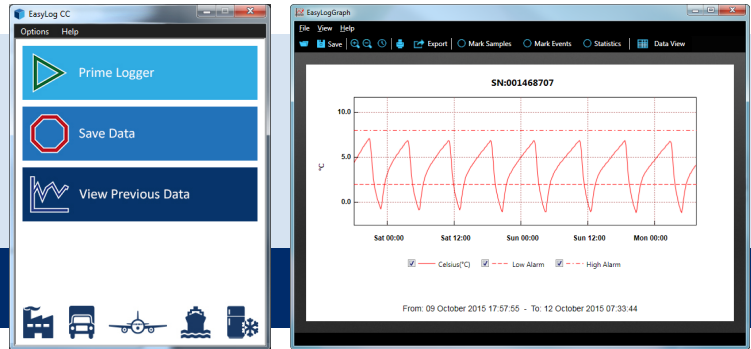
- 3 data loggers for monitoring Chilled Goods, Frozen Goods and Ripening Goods.
- No set-up required. One button press-to-start logging.
- Pre-configured with appropriate sample rates and alarm thresholds for each application.
- Reusable with 12+ months battery life.
- Various export options including PDF, Microsoft Excel and JPEG.



Each of the three Cold Chain loggers comes pre-configured for use in your particular application – simply press the button to start logging. During a logging session, pressing the button will light up the status LEDs to give a quick indication as to whether the temperature has exceeded an alarm condition at any point. Once your session has been completed, tear open the IP67-rated plastic wallet to reveal the USB connector and plug it in to your PC. Use the free EasyLog CC software for Windows to download and graph the data, and then prime your logger for its next use.

### EasyLog CC Software

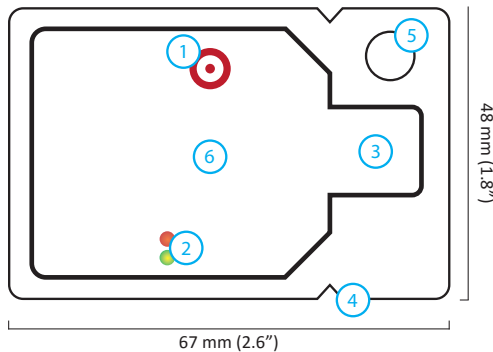
The simple-to-use software allows you to view the data graphically, in a table or export it in various formats for use in further reporting.



Download the latest version of the software free of charge from [www.easylogusb.com](http://www.easylogusb.com)

### YOUR EL-CC-1

- 1 Start / Status button
- 2 Status LEDs
- 3 USB connector
- 4 Tear to open
- 5 Mounting point
- 6 Model type



### SPECIFICATIONS

Measurement range	-30 to +60°C (-22 to +140°F)
Accuracy (overall error)	±0.5°C maximum (±1°F)
Resolution	0.1°C (0.1°F)
Battery Life	12 months (minimum)
IP Rating	IP67*
Readings	32,600

\* The data logger is protected against moisture to IP67 standard when housed in an EL-CC-BAG or equivalent.

### MODEL SPECIFIC

	Chilled Goods	Frozen Goods	Ripening Goods
High Alarm Level	8°C	-16°C	14°C
Low Alarm Level	2°C	-20°C	12°C
Logging Interval	10 minutes (220 days)	10 minutes (220 days)	10 minutes (220 days)
Part Number	EL-CC-1-001	EL-CC-1-002	EL-CC-1-003

This unit can be quickly customised for use in multiple markets. If you have a specific monitoring application, that requires different sample rates or alarm thresholds, call us today.

### ACCESSORIES

EL-CC-BAG: Pack of 5 waterproof bags for data logger during use.

