



PHABRIX[®]
broadcast excellence

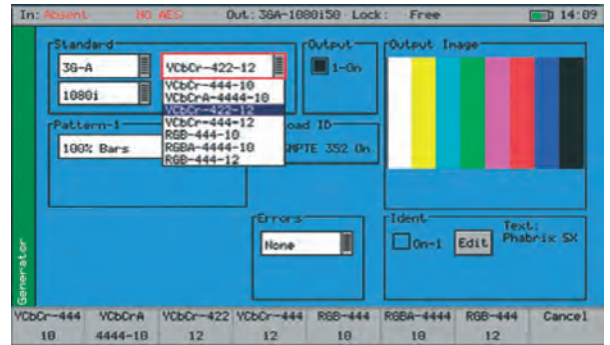
ADVANCED FORMATS

The advanced formats option **available for the SxTAG, SxA and SxE** adds a variety of new formats to the standard set of 76 currently available. These include 4:2:2 YUV, 4:4:4 RGB, and 4:4:4 YUV at 10/12 bit and 3G level A and B.

Once the option code has been entered, the new formats will be shown in the generator selection window as exemplified in the diagram right.

This option is not required if the PHSXO-2K option is already installed in the Sx unit.

Please note that the PHABRIX[®] SxD has these formats plus additional formats associated with dual link usage. To use this format in a SxTAG, the PHSXT-GEN option is required.



The formats option adds additional formats available from the drop down menu.

ADDITIONAL FORMATS AVAILABLE

Link Type	Reference Standard	Resolution		Rates									
				60	59.94	50	30	29.97	25	24	23.98		
1.485 Gb/s													
SMPTE 372M	SMPTE 274M	1920 X 1080	4:2:2 (Y'CbCr)/10-bit	P	P	P							
			4:4:4 (R'G'B'), 4:4:4:4 (R'G'B' + A)/10-bit										
		1920 x 1080	4:4:4 (R'G'B')/12-bit	I	I	I	P,sF	P,sF	P,sF	P,sF	P,sF		
			4:4:4 (Y'CbCr), 4:4:4:4 (Y'CbCr + A)/10-bit										
	4:4:4 (Y'CbCr)/12-bit												
SMPTE 428-9	2048 x 1080	4:4:4 (X'Y'Z')/12-bit							P,sF	P,sF			
3 Gb/s													
SMPTE 425-A	SMPTE 296M	1280 x 720	4:4:4 (R'G'B'), 4:4:4:4 (R'G'B' + A)/10-bit 4:4:4 (Y'CbCr), 4:4:4:4 (Y'CbCr + A)/10-bit	P	P	P	P	P	P	P	P	P	
	SMPTE 274M	1920 x 1080	4:4:4 (R'G'B'), 4:4:4:4 (R'G'B' + A)/10-bit 4:4:4 (Y'CbCr), 4:4:4:4 (Y'CbCr + A)/10-bit	I	I	I	P,sF	P,sF	P,sF	P,sF	P,sF		
	SMPTE 274M	1920 x 1080	4:4:4 (R'G'B')/12-bit 4:4:4 (Y'CbCr)/12-bit	I	I	I	P	P	P	P	P		
	SMPTE 428-9	2048 x 1080	4:4:4 (X'Y'Z')/12-bit							P,sF	P,sF		
	SMPTE 274M	1920 x 1080	4:2:2 (Y'CbCr)/12-bit	I	I	I	P,sF	P,sF	P,sF	P,sF	P,sF		
3 Gb/s	Mapping of 2 x SMPTE 292M HD SDI Interfaces	BLUE formats are standard on the SxD and as an option on the SxA and SxE TURQUOISE formats on SxA and SxE as SMPTE 425-B carrying 1 x SMPTE 372M dual link payload RED formats can be detected by the Sx but not fully handled											
SMPTE 425-B	1 x SMPTE-372M dual-link payload												

ORDERING INFORMATION

Product Code PHSXOF

* Specifications and features described herein are subject to change without prior notice. Please consult our website www.phabrix.com for the latest data. PHABRIX is a registered trademark.

LEADER INSTRUMENTS CORPORATION

Toll Free 1-800-645-5104
Sales@LeaderAmerica.com

Tel 1-714-527-9300
www.LeaderAmerica.com

Represented in the Americas by

