

# More flexibility. Modular. Truly universal.

It's finally here...

LocknCharge Technologies is proud to announce the newest product to the range... the **Carrier 40 Cart™**.



Compatible with Chromebook, Tablet and iPad® devices^.



## Touchboards

205 Westwood Ave, Long Branch, NJ 07740  
Phone: 866-94 BOARDS (26273) / (732)-222-1511  
Fax: (732)-222-7088 | E-mail: [sales@touchboards.com](mailto:sales@touchboards.com)

The **Carrier 40 Cart** takes device management to the next level... a complete system that offers more flexibility than any other Cart in its category.

Here is how...



**New 5 slot Carry Baskets** give users the flexibility to deploy Chromobooks and Tablets with ease. The new and improved baskets are lighter, easier to grip, and can fit a wider range of devices including Chromebooks and Tablets.

**Recharge in Mass.** The Carrier 40 can charge up to 40 Chromebook, Tablet or iPad devices at once.



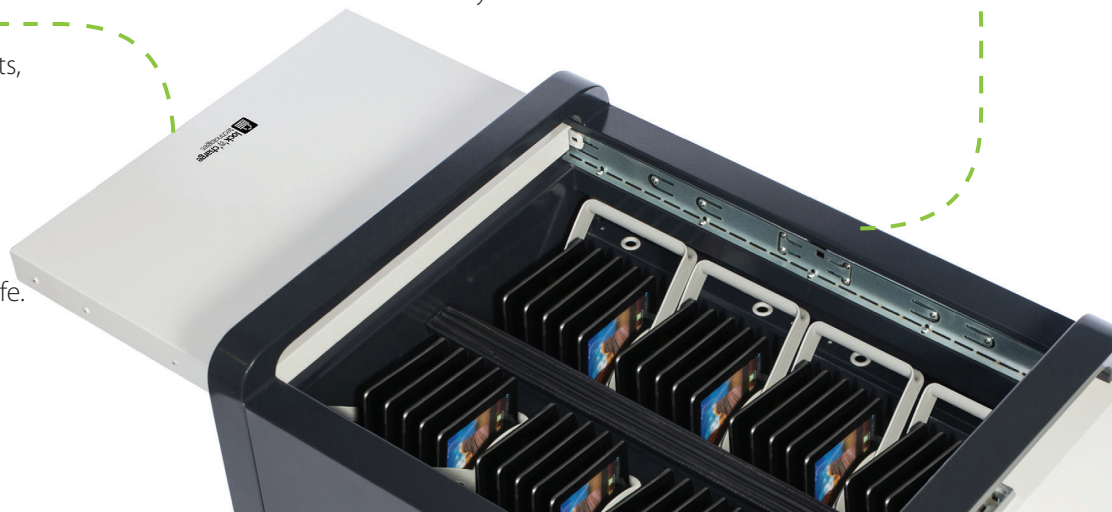
**Modular and future proofed.** Option to add syncing functionality with LocknCharge iQ Sync Charge Boxes.

**The larger device storage** area means that Chromebooks and Tablets can be accessed easier and by more users at once.

**New soft closing, sliding hood.** Secures up to 40 Chromebooks or Tablets, and the baskets that they are stored in!

**Highly Secure.** Two-point locking system to keep your valuable devices safe.

**Lifetime Warranty\*.** LocknCharge products are built to last.



#### Technical Specifications:

Height: 34.38 inches  
Width: 28.92 inches  
Length: 34.63 inches  
Weight: 150 lbs

*Maximum load of 55 lbs per soft closing, sliding hood when extended.*

Images and specification are for illustration purposes only. Final product may differ and is subject to change without notice. Carrier 40 Cart™ does not come with any devices. iPad® is a trademark of Apple Inc., registered in the U.S. and other countries.

^ May not fit all devices. Please check the dimensions of the device and the Carry Basket.

\* Visit [www.lockncharge.com/warranty](http://www.lockncharge.com/warranty) for full warranty details.



[www.lockncharge.com](http://www.lockncharge.com)

[support@lockncharge.com](mailto:support@lockncharge.com)

phone: (888) 943-6803