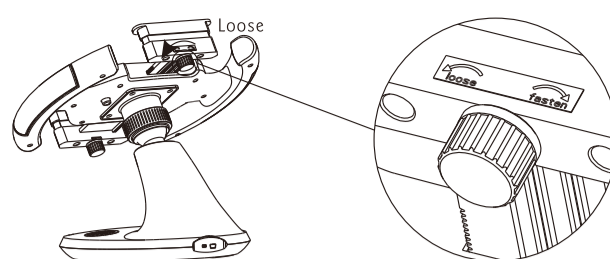
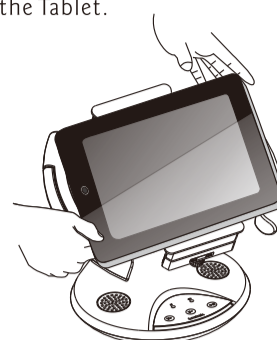


**Item No.:GI
Racer User Manual**

3. Loose the knob to adjust clip height to maximum.



4. Take out the Tablet.



6

Safety Information

1. Do not use this product near water or moisture.
2. This product is NOT weatherproof.
3. Clean only with a dry lint-free cloth. Disconnect the power source before cleaning. Do not use any chemicals or cleaners.
4. Do not install or use near any open flame or heat sources, such as radiators, heat registers, stoves, grills, or other devices that produce heat.
5. Do not expose to direct sunlight.
6. Only use accessories specified by the manufacturer.

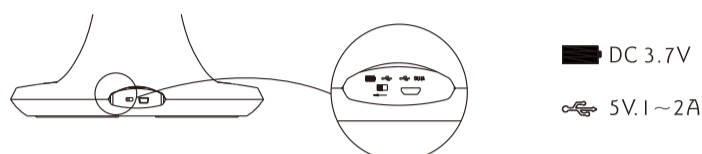
Important Safety Instructions

1. Read and keep this manual.
2. Refer all servicing to qualified service personnel.
3. When service is required, refer servicing to qualified service personnel under the following conditions:
 - (1) When USB cable is damaged.
 - (2) If liquid has been spilled, or objects have fallen into the device.
 - (3) If the device has been exposed to rain or water.
 - (4) If the device does not operate normally by following the operating instructions. Adjust only by following the operating instructions as improper adjustments of other controls may result in damages.

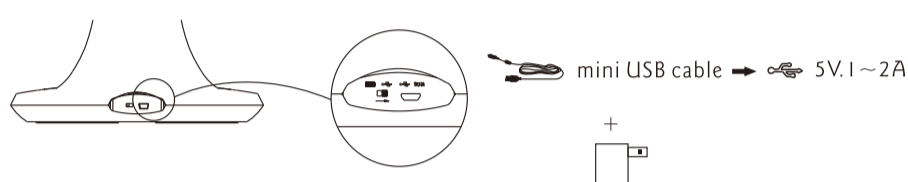
1

Connect Tablet to Bluetooth speakers

Switch to battery mode(DC 3.7V)



The power of speakers can be supplied by standard Tablet USB adaptor(DC 5.0V/1A-2A), Switch the Product to USB mode while supplying power through USB adaptors.



7

Product&Accessory

1. Racer*1
2. Manual*1
3. Mini USB Cable*1

Features

- Ergonomic design for ultra comfort and control
- Retractable clips for Tablets with all dimensions(7"-10.1")
- Dual bluetooth speakers
- Supplying power to speakers through USB adaptor of Tablets

Specification

Bluetooth:2.1+EDR
Frequency Range:Bluetooth RF 2.4GHz~2.4835GHz
Power supply: Rechargeable batteries (DC 3.7V) or mini USB cable connecting to USB adaptors (DC 5.0V/1A~2A) of Tablets



Speakers:3W/4Ω*2 stereo output
Bluetooth Effective Range:10 meters in open space

3. Long press button to start up, the blue indicator light will flash fastly, it will connect the previously matched bluetooth device automatically in 30 seconds. When it is connected successfully, the flash frequency of the light will slow down. If fail in connection, it will connect again automatically.
4. Open the tablet or the matching bluetooth device, search the device, when signal is found, it will show "LOCTEK PAD038", then click to connect. When it is connected successfully, the flash frequency of the light will slow down. (When disconnected for 10 minutes, it will shut down automatically.)
5. Short press button V+, V-, you can adjust the volume.
6. When battery voltage is too low, you can beep from the speaker. And when voltage is below 3V, product will shut down automatically.
7. During charging, the red light is on. After finishing charging, the red light will be off.
8. Long press to shut down.
Precaution: It's advised to set the switch into external power supply status, when it is not intended to be used for a long time.

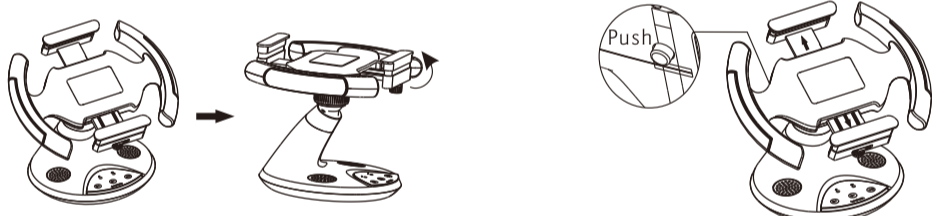
2

8

Installation Guide

I. Attach Tablet to Racer wheel

1. Adjust the Racer Wheel horizontally.
2. Push the button to extend the clips to maximum.



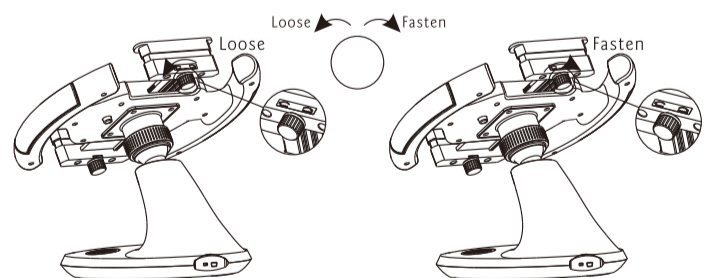
3. Loosen the knob according to different thickness of Tablet.
4. Press the clips by hands to accommodate Tablet with different dimensions(7"~10.1")



3

9

5. Adjust clip height by fastening the knob to accommodate Tablet with different thickness.(0.35"~0.73")

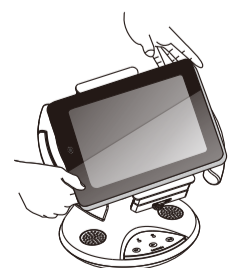


4

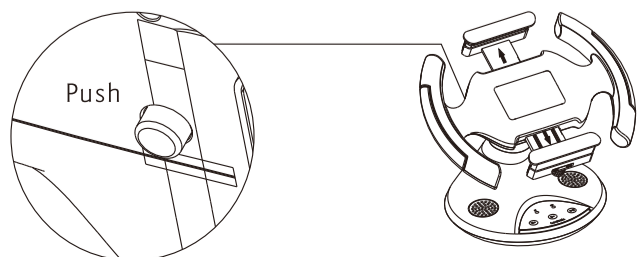
10

Remove Tablet from Racer Wheel

1. Adjust the loaded Racer Wheel horizontally.



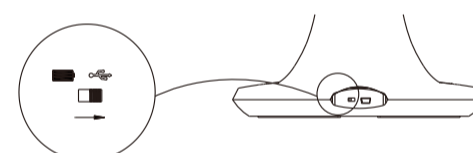
2. Push the button to extend the clips to maximum.



5

11

Troubleshooting:
If Racer does not work properly, please force shut down the Product by switching power supply to USB mode and rebooting the Product again. If Racer does not work properly after the above steps have been performed 3 times, please consult your dealer.



Warranty Information:

Racer comes with 2 year limited warranty. Please contact your dealer for details in case of warranty claims. The warranty will void in the case that the defect has been caused by misuse, neglect, improper installation, repair, alteration or accident. Logitek bears no responsibility for failure or defect caused by any third party product or components whether authorized or not.

User manual:

This device complies with part 15 of the FCC Rules. Operation is subject to the following two conditions: (1) This device may not cause harmful interference, and (2) this device must accept any interference received, including interference that may cause undesired operation.

Any Changes or modifications not expressly approved by the party responsible for compliance could void the user's authority to operate the equipment.

Note: This equipment has been tested and found to comply with the limits for a Class B digital device, pursuant to part 15 of the FCC Rules. These limits are designed to provide reasonable protection against harmful interference in a residential installation. This equipment generates uses and can radiate radio frequency energy and, if not installed and used in accordance with the instructions, may cause harmful interference to radio communications. However, there is no guarantee that interference will not occur in a particular installation. If this equipment does cause harmful interference to radio or television reception, which can be determined by turning the equipment off and on, the user is encouraged to try to correct the interference by one or more of the following measures:

- Reorient or relocate the receiving antenna.

- Increase the separation between the equipment and receiver.
- Connect the equipment into an outlet on a circuit different from that to which the receiver is connected.
- Consult the dealer or an experienced radio/TV technician for help.

ZOXOU INC.
ADDRESS: 47618 Kato Road, Fremont, CA, 94538 United States.
TEL: 1-855-421-2808
Facebook: Loctek
Twitter: LoctekOfficial

LOCTEK VISUAL TECHNOLOGY CORP (MANUFACTORY)
ADDRESS: No.588 Qihang South Road, Binhai Industrial Zone, Yinzhou District, Ningbo China.
WEB: www.loctek.com

Touchboards
205 Westwood Ave, Long Branch, NJ 07740
Phone: 866-94 BOARDS (26273) / (732)-222-1511
Fax: (732)-222-7088 | E-mail: sales@touchboards.com