

Standard 11lbs  
(5kg)



Item No.:P3B  
Installation guide

A	M4X12mm ( 4PCS )	G	M6 ( 2PCS )	M	M6x8mm ( 4PCS )
B	M5X12mm ( 4PCS )	H	M10x16mm ( 2PCS )	N	S14.2x10mm ( 8PCS )
C	M6X12mm ( 4PCS )	I	∅10.5x∅20x2.0 ( 2PCS )	O	M8x55mm ( 8PCS )
D	M8X16mm ( 4PCS )	J	M6x12mm ( 4PCS )	P	3X3.5X5.6X6.8X8mm ( 4PCS )
E	∅5.3x∅14x1.2 ( 4PCS )	K	M8x45mm ( 4PCS )	Q	( 1PCS )
F	M6x20mm ( 2PCS )	L	M8 ( 4PCS )	R	∅8.5x∅20x2.0 ( 12PCS )

01	4PCS	12	1PCS
02	2PCS	13	1PCS
03	2PCS	14	2PCS
04	1PCS	15	2PCS
05	2PCS	16	1PCS
06	2PCS	17	2PCS
07	1PCS	18	1PCS
08	2PCS	19	2PCS
09	2PCS	20	1PCS
10	2PCS	21	2PCS
11	1PCS	22	2PCS

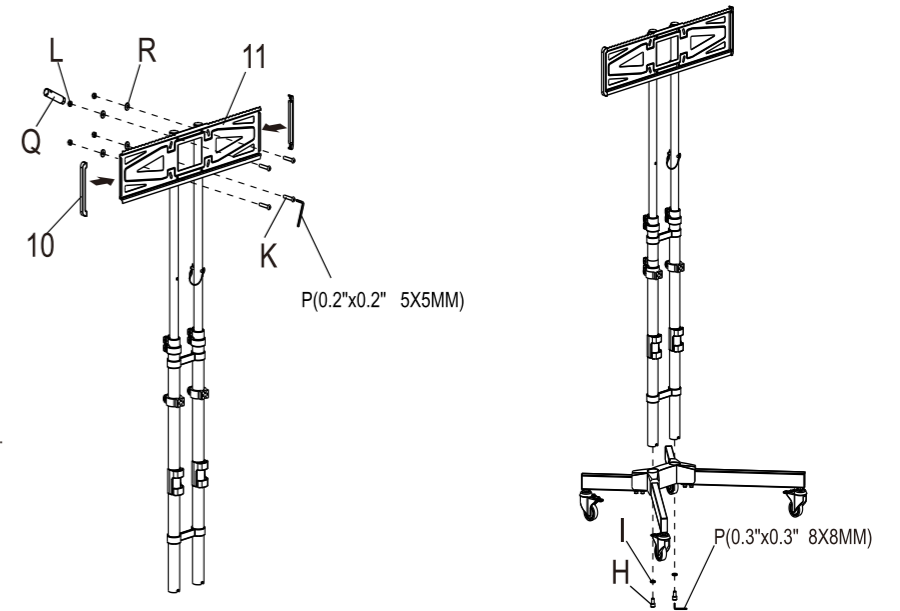
  

Tools Needed to Assembly

**STEP3**

Attaching TV Brackets and the Base

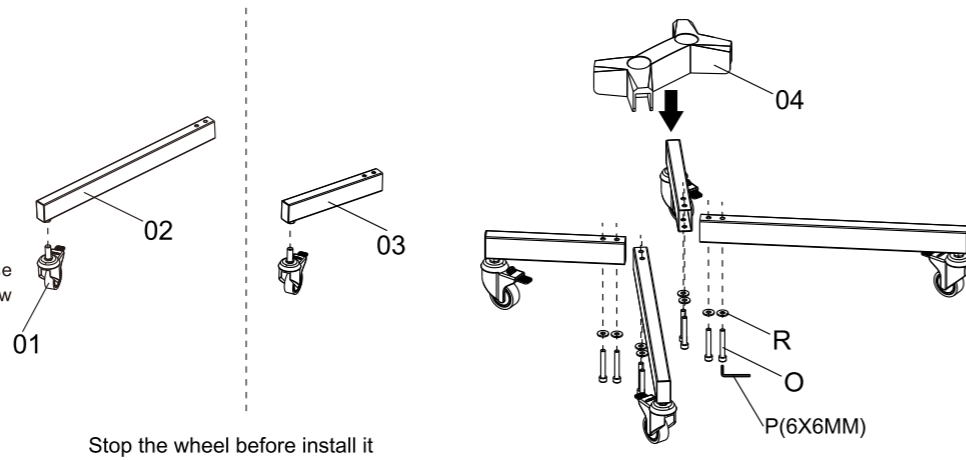
- Attach the TV mount (11) to the poles. Note that the ridged part is on top, facing front. Use screws (K) with washers & nuts (R, L) using the wrenches (Q, P) provided. Add decorative plastic edging (10) to sides of mount.
- Insert poles into base and attach with screws and washers (H, I) through the underside of the base (04).



**STEP1**

Assembling Support Legs

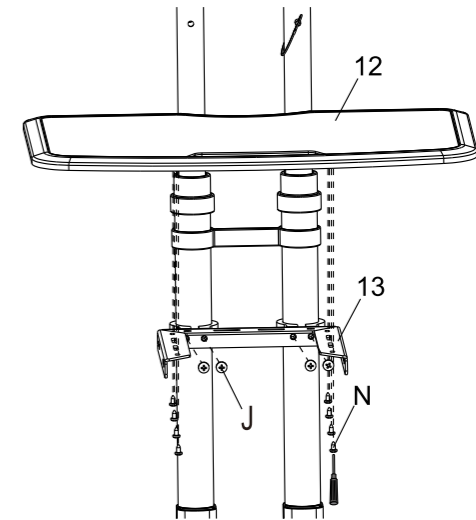
- Make sure the wheels are locked before you begin installation. Screw all four wheels (01) into support legs of cart base (02 & 03).
- Attach all four support legs into the center of the base (04). To do this, turn part 04 upside down, then screw in each leg. Longer legs (02) face front.



**STEP4**

Placing the Shelf

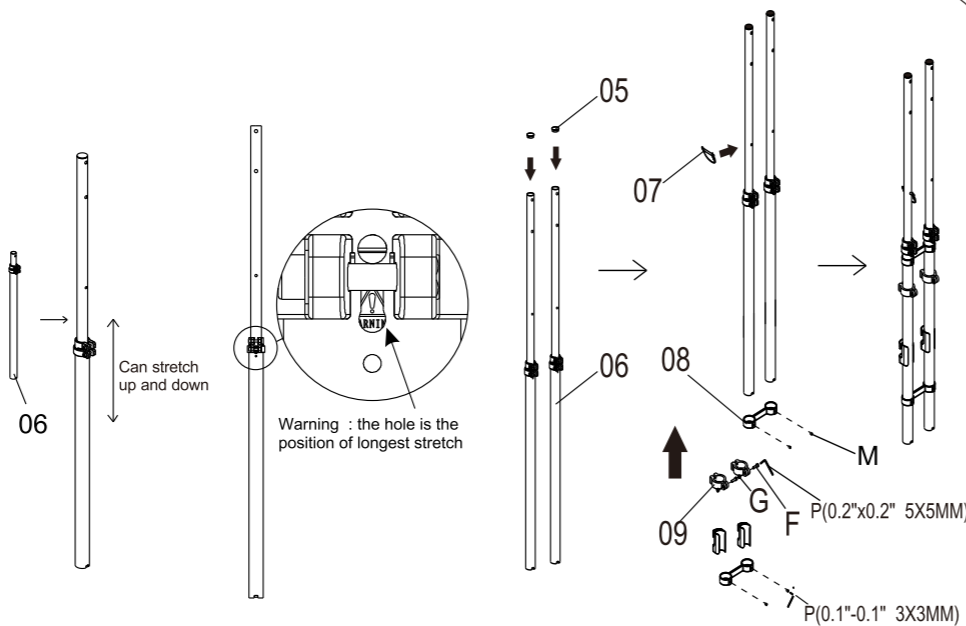
- Attach AV tray support bracket (13) to poles using screws (J). Next, use screws (N) to attach the AV tray to AV tray base.



**STEP2**

Attaching uprights

- Poles are height adjustable. Warning: When you see the warning symbol, you have reached the maximum extension height of the poles.
- Attach supporting parts 08, 09, 15 to the cart's center poles using the related hardware (M, G, F) as shown in the diagram. Attach the finishing safety caps (05) to the top of the poles and insert safety lock into the lowest available adjustment hole, as shown (07). (When finished, hardware will be oriented to the back side of the poles.)

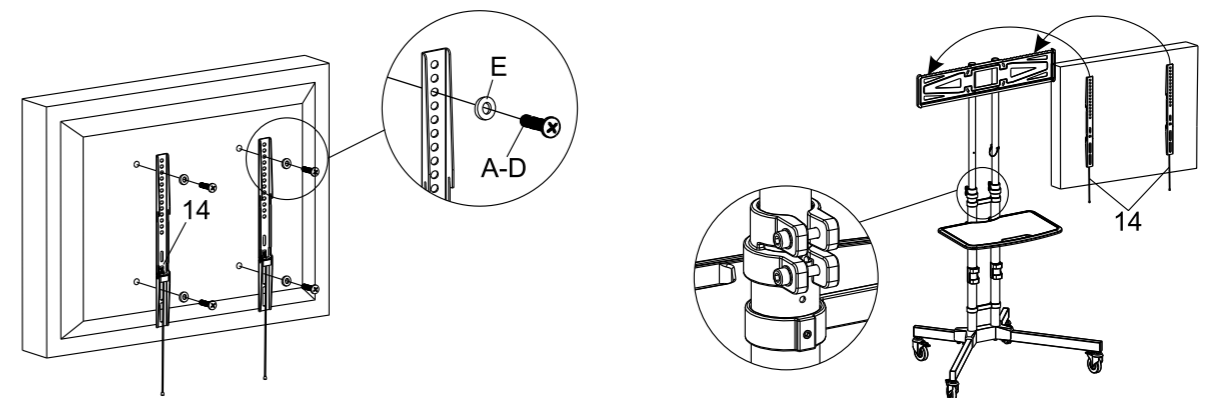


**STEP5**

Mounting Flat Panel Screen

- Connect mount arms (14) to the back of your TV using screws (A-D, depending on your TV), and washers (E).
- Make sure the screws here are tightly fastened before hanging TV on mount.

Note: The washers (E) is needed only when you use Screw A or B, not for Screws C or D.

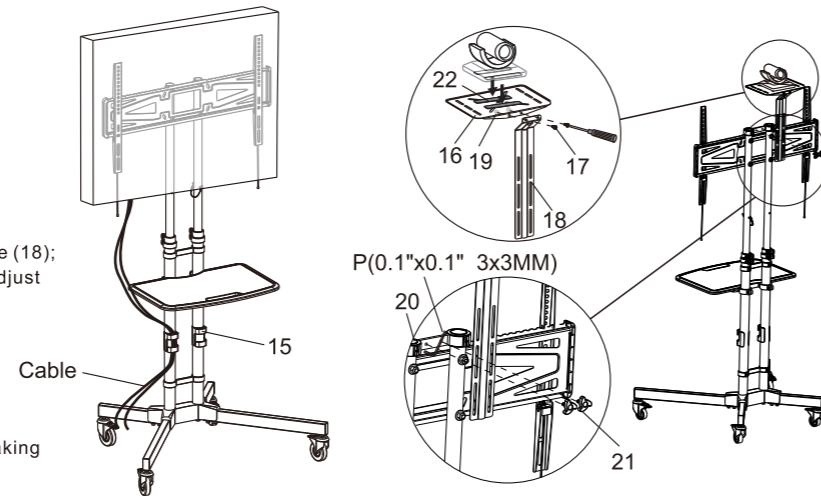


## STEP 6

### Assembling Top Shelf

- Route cables through cable management attachments (15).
- Attach the kit (20) on the uprights, and screw it with P (3\*3).
- Paste 3M glue on the camera plate;(16)
- Connect and tighten the camera plate (16) and the support plate (18);
- Connect the support plate (18) and the kit (20) with the knob (Adjust the height according to the holes on the support plate).

**Note:** you will want to keep the Allen wrenches provided for making future height adjustments.



### Warning!

- **CHOKING HAZARD!** This item contains small parts. Please monitor children to make sure they do not play with any small parts associated with this TV cart.
- Do not begin to assemble/install this product until you have read and understand the instructions. If you have any questions regarding the instructions or warnings, please contact a professional installer.
- This product requires two people for proper assembly.
- Before assembly and TV installation, please check the weight of your monitor. Never exceed the maximum load capacity of 88lbs (40kg). To do so may cause product damage, physical injury or even death.
- This product is for indoor use only! Outdoor use may result in product damage or personal injury.
- Always lock down wheels when TV is not in motion.
- Always insert safety locking mechanism (part 07) after any height adjustment.

#### ZOXOU INC.

ADDRESS: 47618 Kato Road, Fremont, CA, 94538 United States.

TEL: 1-855-421-2808

Facebook: Loctek Twitter: LoctekOfficial

Web: www.loctek.us

#### LOCTEK VISUAL TECHNOLOGY CORP ( MANUFACTORY )

ADDRESS: No.588 Qihang South Road, Binhai Industrial Zone, Yinzhou District, Ningbo China.

WEB: www.loctek.com

