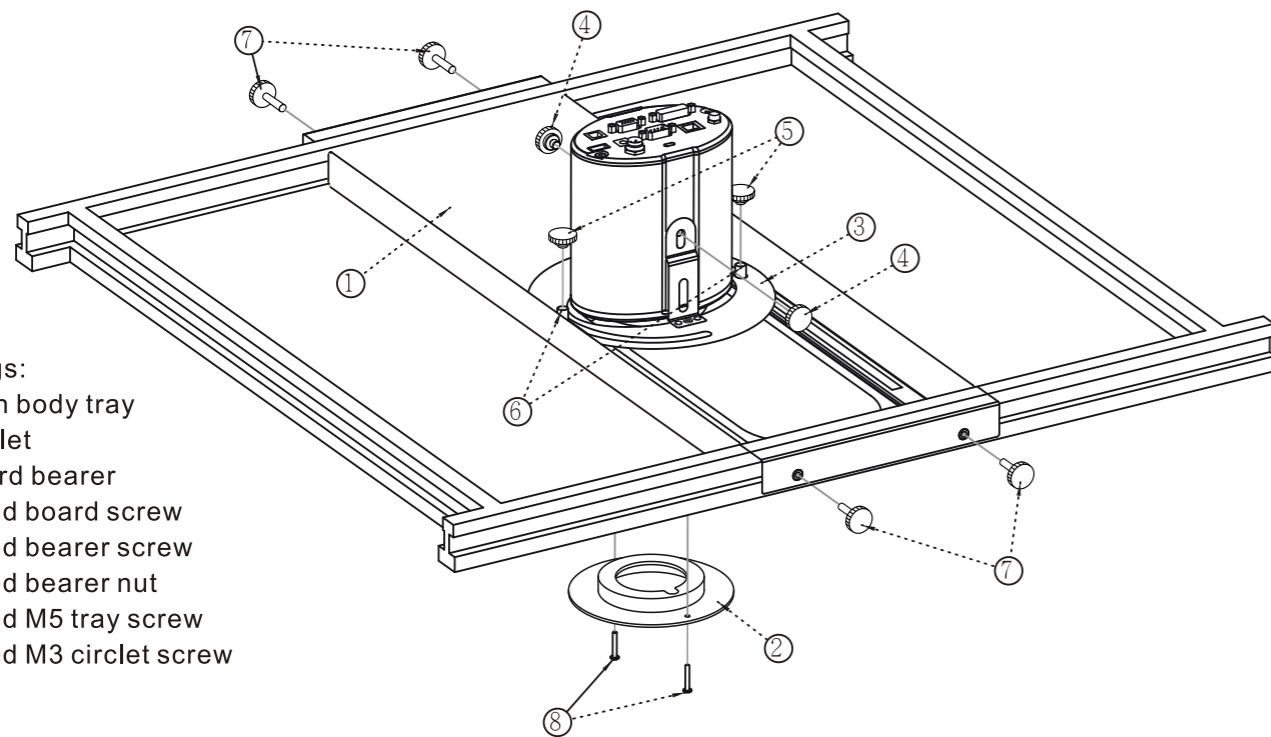


# Instruction to CL-A01 Installation

## ⚠ Installation Precautions

- \* A space of more than 250mm shall be provided for installing this device on ceiling; and the applicable thickness of ceiling shall is 5mm~12mm.
- \* The installation can only be positioned in location where can provide structural support to the weight of this device and CL510; otherwise which may cause damage to personnel or equipment by dropping device.
- \* Please make sure that you use the specified fittings. All screws should be fastened tightly without looseness of any part.



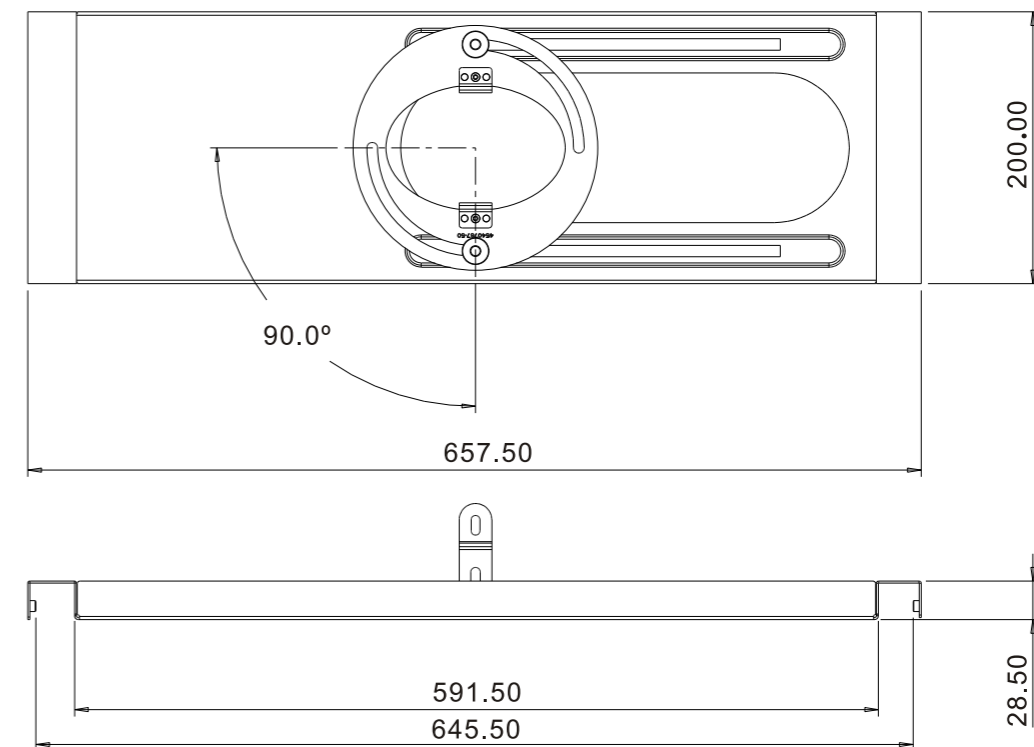
### Fittings:

- 1.Main body tray
- 2.Circllet
- 3.Board bearer
- 4.Fixed board screw
- 5.Fixed bearer screw
- 6.Fixed bearer nut
- 7.Fixed M5 tray screw
- 8.Fixed M3 circllet screw

## Installation Method

1. After conforming the installation location, take down ceiling from light steel frame, mark the hole position and size on ceiling according to [round hole figure in attachment 1](#), carve a hole (hole diameter should be between 110mm and 120mm approximately) with saw.
2. Install CL510 on [fitting 3](#), and fasten board tightly with [fitting 4](#).
3. Install CL510 and [fitting 3](#) on [fitting 1](#) with [fitting 5](#) and [fitting 6](#). The screw should not be fastened tightly first of all.
4. Install CL510 and the device on ceiling and move to suitable location, fasten tightly [fitting 5](#), thread ceiling and [fitting 2](#) with [fitting 8](#), fasten [fitting 2](#) and [fitting 3](#) and install them on the other side of ceiling.
5. Put CL510, the device and ceiling back on light steel frame, and fasten tray tightly on light steel frame with [fitting 7](#).
6. Connect signal and power wire to camera ( refer to the instructions in [CL510 user's manual](#))

## Dimension



## Attachment 1

