

PORTABLE WIRELESS PA SYSTEM

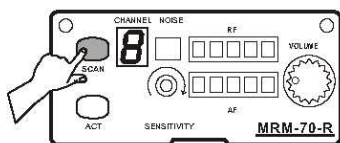
SET-UP RECEIVER AND TRANSMITTER FREQUENCIES (SCAN & SYNC)

AUTOMATIC "RECEIVER" SCAN FREQUENCY SELECTION

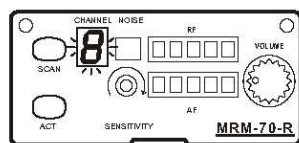
1. POWER "ON" the portable PA



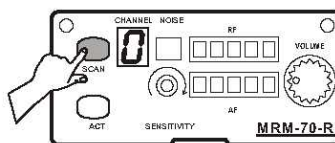
2. POWER on receiver by turning "VOLUME" knob.



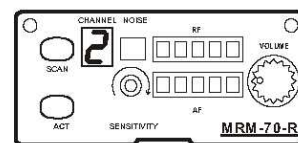
3. Press & hold "SCAN" button for 1 second



4. Existing channel blinks

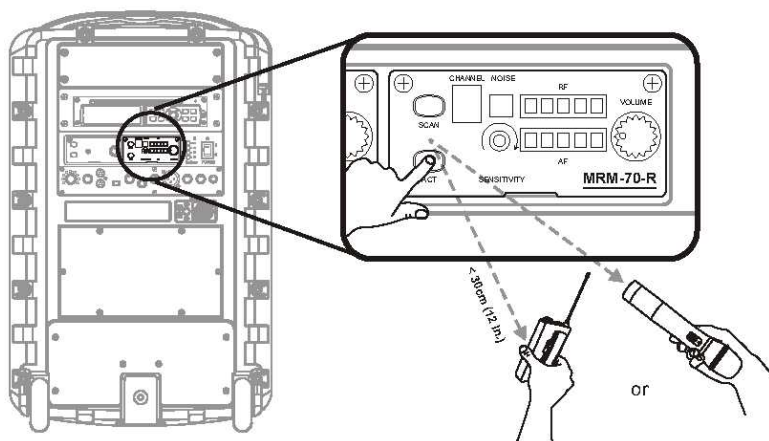


5. Press & release "SCAN" button



6. New interference-free channel appears

AUTOMATIC "TRANSMITTER" SYNC



1. POWER on transmitter (ensure fresh batteries are properly installed with the correct polarity).
2. Locate and bring an ACT transmitter *infrared (IR) port within 30cm (12-inch) of receiver's ACT button.
3. Press and release "ACT" button to synchronize transmitter and receiver frequencies.
4. When the frequencies are synchronized successfully the receiver channel stops flashing and the RF meter is fully lit, the microphone is now ready for use.

NOTE: The transmitter infrared IR port is normally located by a round-shaped red color spot.

MTM-92 Wireless Interlinking Application for MA-708 & MA-808

SLAVE
(MA-708 or MA-808)



**MRM-70B or
MRM-72B (6C)**

SLAVE
(MA-708 or MA-808)



**MRM-70B or
MRM-72B (6C)**

SLAVE
(MA-708 or MA-808)



**MRM-70B or
MRM-72B (6C)**

SLAVE
(MA-708 or MA-808)



**MRM-70B or
MRM-72B (6A)
MTM-92 (6C)**

SLAVE
(MA-708 or MA-808)



**MRM-70B or
MRM-72B (6A)
MTM-92 (6C)**

MASTER
(MA-708 or MA-808)



**MRM-70B or
MRM-72B (7A)
MTM-92 (6A)**

100 meter

100 meter

100 meter



MRM-70B 16-Channel UHF Diversity Receiver Module
MRM-72B 16-Channel UHF Diversity Receiver Module
MTM-92 16-Channel UHF Interlinking Transmitter
(6A,6C,7A are MIPRO frequency bands)

*Add the MTM-92 Wireless Interlinking Transmitter to wirelessly connect multiple MIPRO MA-708 or MA-808 wireless PA systems. Ideal for parade routes, farmers markets, athletic events or any venue requiring extended transmission range and expanded coverage without the mess of bulky speaker cables.