

MOD-FPMD

# Back-to-Back Display Mount

## For Modular Series Flat Panel Display Mounts

The Peerless-AV Modular Mounts Line features a full range of products that can fulfill multiple requirements from a limited number of SKUs. With the universality of the components, configure your own perfect custom flat-panel display or projector mounting solution for any application.

The Modular Mount Line was developed with the professional AV installer in mind. Designed around a 2" (50mm) diameter pole, the line is ideal for new projects as well as for upgrading existing installations.

The MOD-FPMD mount is the perfect solution for mounting displays back-to-back installed using the Modular Series Line of mounts.

### FEATURES

- Back-to-Back display mounting solution for 10"-65" displays
- VESA® pattern 75/100mm compliant
- +20/-5° tilt, lockable in 5° increments
- 360° rotation
- Internal cable management



Display size: 10" - 65"



Max load: 374lb (170kg)



# Touchboards

205 Westwood Ave, Long Branch, NJ 07740  
Phone: 866-94 BOARDS (26273) / (732)-222-1511  
Fax: (732)-222-7088 | E-mail: [sales@touchboards.com](mailto:sales@touchboards.com)



**MOD-FPMD** Back-to-Back Display Mount for Modular Series Flat Panel Display Mounts

Product Specifications

|                 | DIMENSIONS (W x H x D)                       | PRODUCT WEIGHT | LOAD CAPACITY   | FINISH     | AVAILABLE COLORS |
|-----------------|--|----------------|-----------------|------------|------------------|
| <b>MOD-FPMD</b> | 8.81" x 5.11" x 5.11"<br>(224 x 130 x 130mm) | 4.50lb (2.0kg) | 374.0lb (170kg) | Power coat | Black            |

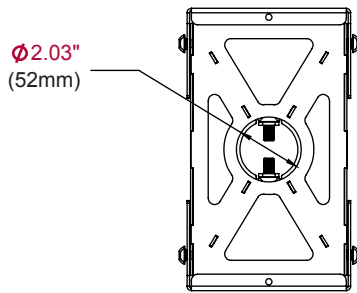
Package Specifications

|                 | PACKAGE SIZE (W x H x D)                     | PACKAGE SHIP WEIGHT | PACKAGE UPC CODE | PACKAGE CONTENTS                                       | UNITS IN PACKAGE |
|-----------------|--|---------------------|------------------|--|------------------|
| <b>MOD-FPMD</b> | 6.25" x 9.62" x 6.00"<br>(158 x 244 x 152mm) | 5.95lb (2.7kg)      | 73502926998      | Display mount,<br>(2) pole clamp,<br>mounting hardware | 1                |

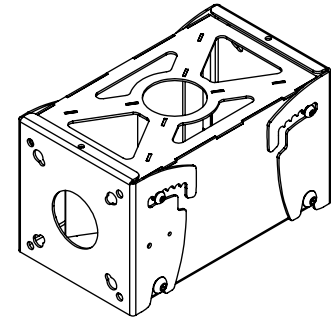
Accessories

- MOD-ACF(-W):** Accessory Cover for MOD-CPF Ceiling Plate
- MOD-APC:** Accessory Pole Coupler
- MOD-APRG(-W):** Accessory Projector Adaptor, PRG Mount
- MOD-APRS(-W):** Accessory Projector Adaptor, PRS Mount
- MOD-ADF:** Pole Drill Fixture
- MOD-ATD-W:** Accessory Trim Disc
- MOD-AUB:** Accessory U-Bolt Adaptor
- MOD-CPC(-W):** Ceiling Plate, Cathedral
- MOD-CPF:** Square Ceiling Plate, Flat (7.4" x 6.8")
- MOD-CPI:** I-Beam Ceiling Plate, Flat
- MOD-ASC:** Display-Stacking Clamp
- MOD-FPMS(-W):** Flat Panel Mount, Single
- MOD-P100(-B):** 50mm Extension Pole - 39" (1.0m)
- MOD-P150(-B):** 50mm Extension Pole - 59" (1.5m)
- MOD-P200(-B):** 50mm Extension Pole - 78" (2.0m)
- MOD-P300(-B):** 50mm Extension Pole - 118" (3.0m)
- MOD-UNL:** Universal Display Adaptor, Large
- MOD-UNM:** Universal Display Adaptor, Medium

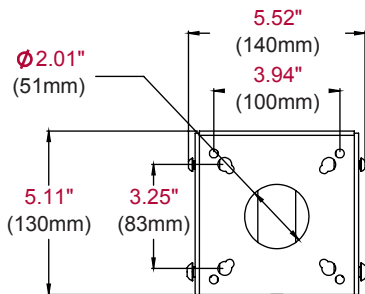
All dimensions = inch (mm)



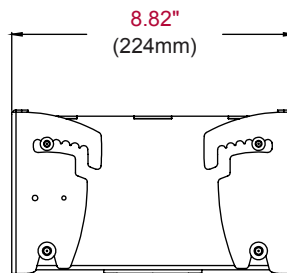
**FRONT VIEW**



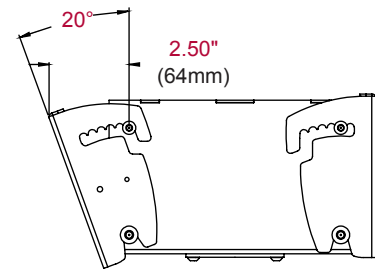
**ISOMETRIC VIEW**



**TOP VIEW**



**SIDE VIEW**



**SIDE VIEW  
20 ° TILT**

**ARCHITECTS SPECIFICATIONS**

The Back-to-Back Display Mount shall be a Peerless-AV model MOD-FPMD and shall be located where indicated on the plans. Assembly and installation shall be done according to instructions provided by the manufacturer.