

- ▶ Precision Instruments
- ▶ High Quality Plastics
- ▶ Storage Solutions

# 2020-2021 PRODUCT CATALOG



[www.mtcbio.com](http://www.mtcbio.com)



(908) 279-0280



[info@mtcbio.com](mailto:info@mtcbio.com)

**IMMUC**™ **Bio**  
MTC Bio Incorporated

## Introduction:

We want to thank our loyal customers for their support and patronage and we welcome those who may be seeing our catalog for the first time. We recognize the vital nature of your research and we realize the significance of our supporting role as a "supplier to science". Thank you for allowing MTC Bio the opportunity to be of service to the life science community.

Since our formation in 2009, MTC Bio has been providing life science laboratories with cost effective products and technical solutions designed to improve laboratory efficiency, safety and results.

MTC Bio's emphasis on quality, value and customer satisfaction have become the driving principles of our company and the standards that our customers come to expect. We have expanded the MTC product line, our production facilities and personnel to better service increasing demand and continued growth. In addition to MTC's traditional liquid handling items, this new catalog offers a series of new products including:

- **ProPette nUVaClean™** World's first decontaminating pipette carousel
- **LinkLabel™** Bluetooth label printer
- **PureAmp™** PCR Consumables
- **FlowTubes™** For use with FACS instrumentation
- **SureStrain™** Improved cell strainers
- **DuoClick™** Aerobic/anaerobic screw-cap culture tubes
- **BioBucket™** Unique collapsible ice and storage bucket
- **Fliptop™** Cardborad Freezer Boxes with attached hinged lids
- **ProPette™** Reach Ergonomic extended length pipette controller

To keep pace with emerging trends, we rely heavily upon suggestions and feedback from researchers and our distribution partners. By listening to our customers, we have been able to develop many new products and enhancements. We, and our knowledgeable distribution network, welcome your questions and comments.

web: **[www.mtcbio.com](http://www.mtcbio.com)**

Ph.: **908-279-0280**

Fax: **732-313-7007**

Add.: **2600A Main Street Ext.  
Sayreville, NJ 08872 USA**



## Table of Contents:



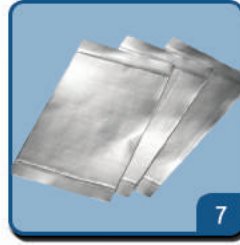
Laboratory Labels



PureAmp™ PCR Tubes



PureAmp™ PCR Plates



PureAmp™ PCR Seals



Microscope Slides



SureSeal S™ MicroTubes



SureSeal S™ Screw Cap Tubes



5 & 10mL Mailing Vials



5mL Snap-Cap MacroTubes®



5mL Screw-Cap MacroTubes®



Flow Cytometry/Culture Tubes



ScrewCap Culture Tubes



15 & 50mL Conical Tubes



SureStrain™ Cell Strainers



Western Blotting Boxes



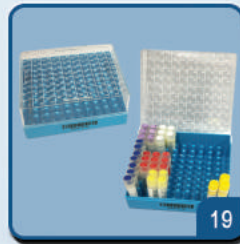
Western Blotting Film



Solution Reservoirs



CoolCaddy™ PCR WorkStation



Polycarbonate Freezer Boxes



Cardboard Freezer Boxes



Disposable Weigh Boats



Storage Racks & Boxes



ProPette™ LE Pipettors



SureStand™ Pipette Racks



nUVaClean™ UV Carousel



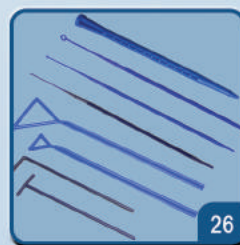
Electronic Pipette Controllers



Manual Pipette Controller



Disposable Transfer Pipettes



Loops, Spreaders, & Pestsle



Autoclave & Sampling Bags

# NEW LinkLabel™ Bluetooth® Label Printer

- Compatible with Bluetooth devices
- Free app allows for limitless customization
- Labels available in white, clear, colored, and for LN2
- Built in cutter - no need for scissors
- Hundreds of pre-programmed scientific characters

The new LinkLabel™ Lab Printer brings a new level of freedom to laboratory labelling. MTC's free, downloadable Label Pro™ App allows the user to endlessly customize and specialize their labels. Use the app to easily change text, font, positioning, size, and label length. The memory function allows you to save commonly used labels or templates. The LinkLabel also has the ability to print batches, serial numbers, QR codes, and a variety of barcodes.

With 13 available label cassettes, the customization doesn't end on your Bluetooth device. Choose from multiple colors of tape, including transparent (see listing on bottom of page). Three label heights are available for different sized vessels. 6mm tapes are great for tissue culture plates, while the extra tall 24mm tapes are ideal for large tubes and flasks. Special ultra-low label tapes are also available for storage in -80°C environments or for liquid nitrogen applications.



Cat. No.	Description	Qty
L3000	LinkLabel™ Bluetooth Enabled Laboratory Printer, with universal power supply	1



## LABeler™ Handheld Label Printer



- Lightweight, for one handed operation
- Built in cutter - no need for scissors
- Prints a variety of 2D barcodes
- "Ultra-Low" tape for liquid nitrogen storage

The LABeler™ Lab Printer provides the convenience of a lab pen with the benefits of a large desktop printer. Simply type in the desired copy using the 50+ button key pad and press the print key... within seconds your label can be cut by pressing the cut lever and is then ready for application.

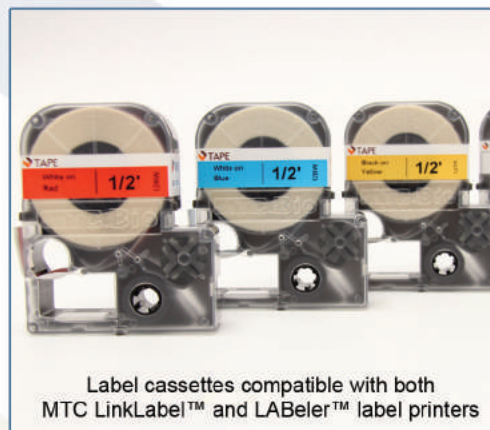
The LABeler is ideal for label identification of any laboratory vessel for nearly any laboratory application. Standard label tapes can be autoclaved, boiled or even frozen to temperatures as low as -50°C. Special Ultra-Low label tapes are also available for storage in -80°C environments or for liquid nitrogen applications.

Cat. No.	Description	Qty
L9010	LABeler™ Handheld Laboratory Printer, with 115V power supply*	1
L9010-A	LABeler™ Handheld Laboratory Printer, without power supply	1

\*230V power supply also available. Please inquire.

## Refill Cassettes for MTC Label Printers

Cat. No.	Description	Qty
L9010-6WK	26' of 6mm lab tape, White with black print	1
L9010-12WK	26' of 12mm lab tape, White with black print	1
L9010-18WK	26' of 18mm lab tape, White with black print	1
L9010-24WK	26' of 24mm lab tape, White with black print	1
L9010-6CK	26' of 6mm lab tape, Clear black print	1
L9010-12CK	26' of 12mm lab tape, Clear with black print	1
L9010-24CK	26' of 24mm lab tape, Clear with black print	1
L9010-12ULT	20' of 12mm lab tape, White with black print, Ultra-Low Temp	1
L9010-24ULT	20' of 24mm lab tape, White with black print, Ultra-Low Temp	1
L9010-12BW	26' of 12mm lab tape, Blue with white print	1
L9010-12RW	26' of 12mm lab tape, Red with white print	1
L9010-12GW	26' of 12mm lab tape, Green with white print	1
L9010-12YK	26' of 12mm lab tape, Yellow with black print	1



Label cassettes compatible with both MTC LinkLabel™ and LABeler™ label printers



# Pure•Amp™ 0.2mL PCR Tubes

- Free of RNase, DNase, DNA, and PCR inhibitors
- Ultra-thin, uniform wall thickness
- Flat, domed or optical caps
- White tubes for better qPCR results



P3010-A  
Attached flat caps



P3010-S  
Separate flat caps



P3020  
Separate domed caps



P3802-Q  
Separate optical caps (qPCR)



P3802-QW  
Separate optical caps WHITE (qPCR)

PureAmp™ 0.2mL PCR tubes and strips are available in seven different configurations, including single tubes, eight strips, domed caps, and flat caps. Optically clear caps, and white tubes (for optimal fluorescence reflectivity) are also available for qPCR applications.

All PureAmp™ PCR tubes and strips are precision manufactured to maintain tight dimensional tolerances and ultra-thin wall thickness, for improved thermal transfer. PureAmp™ PCR Plastics are certified free of RNase, DNase, DNA and PCR inhibitors, and are made of heat-resistant medical-grade polypropylene.



P3030  
Individual flat cap



P3040  
Individual domed cap

Cat. No.	Description	Qty
P3010-A	PCR 8-Strips, 0.2ml with Attached Individual Flat Caps	120 strips
P3010-S	PCR 8-Strips, 0.2ml with Separate Flat Cap Strips	120 strips
P3020	PCR 8-Strips, 0.2ml with Separate Domed Cap Strips	120 strips
P3030	Individual PCR Tubes, 0.2mL, with Attached Flat Caps	1000 tubes
P3040	Individual PCR Tubes, 0.2mL, with Attached Domed Caps	1000 tubes
P3802-Q	qPCR 8-Strip, 0.2mL with Separate Optical Strip Caps, Clear	120 strips
P3802-QW	qPCR 8-Strip, 0.2mL with Separate Optical Strip Caps, WHITE	120 strips
P0800-TL	Opening/closing tool for PCR tubes	2/pk



# Pure•Amp™ 0.1mL Low-Profile Tubes



- RNase, DNase, DNA, and PCR inhibitor free
- Low-profile, qPCR compatible
- Clear, white, or frosted tubes
- Ultra-thin, uniform wall thickness



P3801-Q  
Separate optical caps



P3801-QF  
Separate optical caps FROSTED



P3801-QW  
Separate optical caps WHITE



P0800-TL  
Tube opening/closing tool

PureAmp™ 0.1mL Low Profile PCR tubes and strips are available in three different color/texture configurations, all intended for qPCR applications: Clear, White, and Frosted.

All PureAmp™ PCR tubes and strips are precision manufactured to maintain tight dimensional tolerances and ultra-thin wall thickness, for improved thermal transfer. PureAmp™ PCR Plastics are certified free of RNase, DNase, DNA and PCR inhibitors, and are made of heat-resistant medical-grade polypropylene.

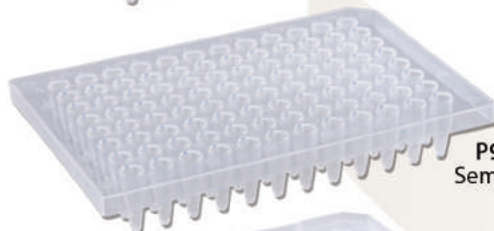
Cat. No.	Description	Qty
P3801-Q	qPCR 8-Strip, CLEAR, 0.1mL with Separate Optical Strip Caps	120 strips
P3801-QF	qPCR 8-Strip, FROSTED, 0.1mL with Separate Optical Strip Caps	120 strips
P3801-QW	qPCR 8-Strip, WHITE, 0.1mL with Separate Optical Strip Caps	120 strips
P0800-TL	Opening/closing tool for PCR tubes	2/pk



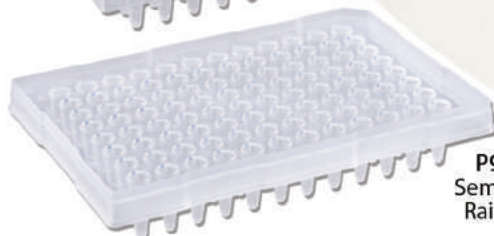
# Pure•Amp™ 0.2mL PCR Plates



P9602-N  
Non-Skirted



P9602-S  
Semi-Skirted



P9602-S  
Semi-Skirted  
Raised Rim



- RNase, DNase, and PCR inhibitor free
- Compatible with standard equipment
- Ultra-thin walled tube wells
- Alpha-numeric reference grids

PureAmp™ 0.2mL PCR Plates are designed to be compatible with most popular thermal cyclers. In particular, P9602-N is compatible with ABI, GeneAmp, Prism, Bio-Rad, MJ and Eppendorf. All Pure•Amp plates are held to very tight dimensional tolerances with ultra-thin walls for optimal thermal transfer. Plates are packaged in 5 bags of 10 plates, for minimal environmental exposure

All PureAmp PCR Plates are free of RNase, DNase, DNA and PCR inhibitors, and are made of heat-resistant medical-grade polypropylene.

Cat. No.	Description	Qty
P9602-N	PCR Plates, standard 96 well x 0.2ml, non-skirted	50
P9602-S	PCR Plates, standard 96 well x 0.2ml, Semi Skirted	50
P9602-SRR	PCR Plates, standard 96 well x 0.2ml, Semi Skirted, raised rim (ABI)	50

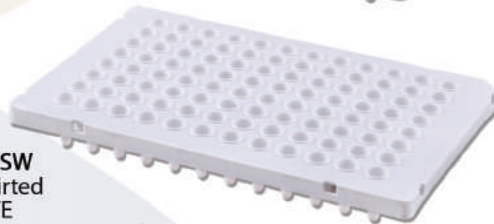


# Pure•Amp™ 0.1mL Low-Profile Plates

- RNase, DNase, and PCR inhibitor free
- Compatible with standard equipment
- Ultra-thin walled tube wells
- Alpha-numeric reference grids



P9601-S  
Semi-Skirted



P9601-SW  
Semi-Skirted  
WHITE



P9601-SRR  
Semi-Skirted  
Raised Rim

PureAmp™ 0.1mL Low Profile Plates are compatible with popular qPCR instruments. Semi-skirted plates are available in natural or white (for improved fluorescence reflectivity) and the raised rim version is supplied in clear/natural. Precision manufactured and uniform ultra-thin walls allow for rapid heat transfer and consistent amplification results. Plates are packaged in 5 bags of 10 plates, for minimal environmental exposure.

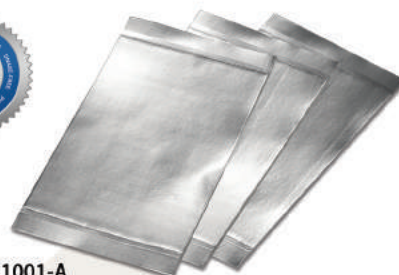
All PureAmp PCR Plates are free of RNase, DNase, DNA and PCR inhibitors, and are made of heat-resistant medical-grade polypropylene.

Cat. No.	Description	Qty
P9601-S	PCR Plates 96 x 0.1ml (Low Profile/Fast) Semi Skirted	50
P9601-SW	PCR Plates, 96 x 0.1ml (Low Profile/Fast) Semi Skirted, WHITE	50
P9601-SRR	PCR Plates 96 x 0.1ml Raised Rim (Low Profile/Fast) Semi Skirted, 50/pk	50

# NEW Pure•Amp™ Precut Sealing Membranes

- RNase, DNase, and PCR inhibitor free
- Evaporation rates  $\leq 5\%$
- Inner packs of 10 membranes

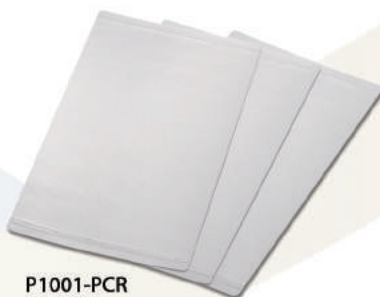
PureAmp™ Sealing Membranes are compatible with all standard PCR plates. Four types are available for PCR and qPCR applications; pierceable aluminum, standard transparent, optically clear sticky adhesive, and optically clear pressure-sensitive adhesive, all of which are guaranteed to keep evaporation rates below 5%.



P1001-A  
Aluminum



P1001-Q  
qPCR, (Sticky Adhesive)



P1001-PCR  
For PCR



P1001-QPS  
qPCR, (Pressure-Sensitive Adhesive)

Cat. No.	Description	Application	Temp. Range	Qty
P1001-PCR	Plate Sealing Film	For PCR	-40° to 140°C	100 (10 bags of 10)
P1001-QPS	Plate Sealing Film	for qPCR (pressure-sensitive adhesive) <sup>1</sup>	-40° to 120°C	100 (10 bags of 10)
P1001-Q	Plate Sealing Film	for qPCR (sticky adhesive) <sup>2</sup>	-40° to 120°C	100 (10 bags of 10)
P1001-A	Plate Sealing Film	Aluminum for PCR or storage	-80° to 120°C	100 (10 bags of 10)

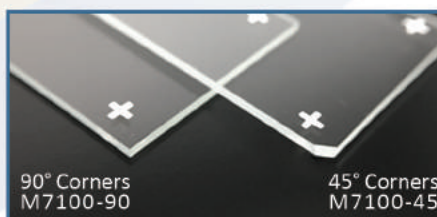
1. ABI® Type  
2. Bio-Rad® Type

ABI is a registered mark of ThermoFisher Scientific Corporation, Waltham MA  
Bio-Rad is a registered mark of Bio-Rad Laboratories, Hercules CA

# NEW Positive Charged MicroScope Slides



- Positive charged for cell adhesion
- Choose 90° or 45° cut corners
- Frosted on one end
- High clarity glass



90° Corners  
M7100-90

45° Corners  
M7100-45



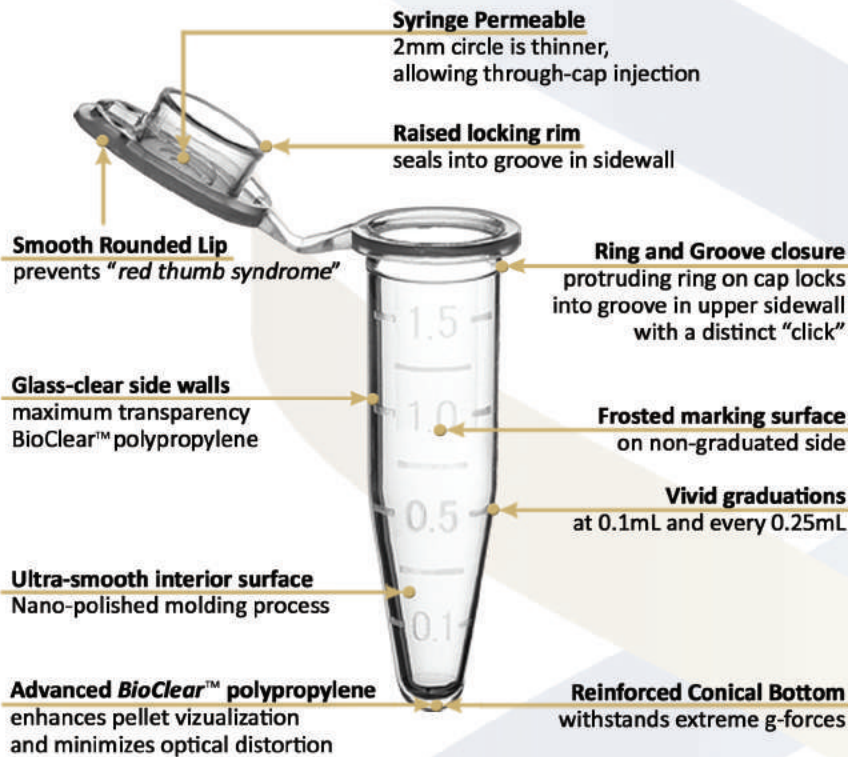
M7100-SD

These new slides have a positive charge that makes the surface ideal for cell, tissue and general sample adhesion. Typical samples have a negative charge and are therefore attracted to the positively charged slide surface, significantly reducing sample "float".

Slides are made of high clarity glass, 25 x 75mm and are 1.1mm thick (compatible with most printers). Frosted marking surface on one end. Packed 72 pieces per plastic box / 1440 per case (20 packs)

Cat. No.	Description	Qty
M7100-90	Microscope Slides, 90° corners, positive charged, frosted on one end, 25 x 75mm	72/pk
M7100-45	Microscope Slides, 45° corners, positive charged, frosted on one end, 25 x 75mm	72/pk
M7100-SD	Microscope Slide Dispenser for box of 72 standard 25 x 75mm slides	1/ea

# SureSeal™ S MicroTubes



Free Stop-Pops™ in every pack!



Self-Standing ZipLock Bag!

- **Sterile is Standard**  
By Electron Beam Radiation
- **Self-Standing Bag**  
With Re-Sealable Opening
- **Stop-Pops™ Supplied**  
10 Stop-Pop cap-locks in each bag

MTC Bio's *SureSeal S™* microcentrifuge tubes are designed for a broad range of research applications, including enzyme digests, DNA isolation / purification, incubation and general sample storage. With a variety of design advances, *SureSeal* Tubes improve sample visualization, safety, stability and overall ease of use.

*SureSeal S* tubes are manufactured under clean room conditions, using only *BioClear™* co-polymer, an advanced polypropylene that maximizes clarity, without compromising centrifugal strength (tested up to 28,000xg) or the usable temperature range (-90°C to +121°C).

The oversized cap (with frosted marking surface), combined with the unique ring & groove closure, enhances the security of the liquid-tight seal, while minimizing the required locking forces for a more ergonomic opening/closing of the tube caps.



1.5mL also available in these great colors



C2002  
2.0mL Natural Color Tubes



C2007 / C2007-AST  
0.5mL in Natural or Assorted



C2000-50AST  
Single Color Bags of 50

Cat. No.	Description	Qty
C2000*	1.5mL, sterile, natural	500
C2000-AST	1.5mL, sterile, assorted colors	500
C2000-50	1.5mL, sterile, natural, 10 bags of 50	500
C200-50AST	1.5mL, sterile, assorted, 10 single color bags of 50 (R,G,B,Y,P)	500
C2002	2.0mL, sterile, natural	500
C2007	0.5mL, sterile, natural	500
C2007-AST	0.5mL, sterile, assorted colors	500
C4010	PolyPestle™ dual-sided pestle for microtubes and cell strainers (Page 11)	50

\*Please add -B for Blue, -G for Green, -R for Red, -Y for yellow, -O for Orange, -P for purple, or -OB for Opaque Black





# SureSeal™ Screw-Cap MicroTubes

- Sterile, RNase, DNase and Pyrogen free
- Leak-proof O-ring seal
- Vivid, printed graduations (2.0mL only)

New from the SureSeal family of sterile tubes: MTC Bio's new 2.0mL screw cap microcentrifuge tubes. Made from ultra-clear polypropylene, with crisp printed graduations, SureSeal 2mL screw-cap tubes offer the best visualization of sample on the market today! May be centrifuged at up to 22,000xg.

1.5mL economical tubes are also provided sterile and include O-rings, but are not graduated, and do not have a skirted bottom. These tubes are perfect for most general applications where a leak proof seal is a necessity.



1.5mL  
10 x 38mm  
excluding rim and cap

2.0mL  
10 x 39mm  
excluding rim and cap

Cat. No.	Description	Qty
C3220-SG	2.0mL, sterile, graduated, w/ O-ring, self-standing, caps assembled, 50 per resealable bag	1000
C3220-SGL	2.0mL, sterile, graduated, w/ O-ring, self-standing, loop caps assembled, 50 per resealable bag	1000
C2210	1.5mL, sterile, w/ O-ring, caps assembled, 500 per sterile bag	500
C2220	1.5mL, sterile, w/ O-ring, loop-caps assembled, 500 per sterile bag	500



# Transport Vials



5mL  
16 x 60mm

10mL  
16 x 80mm

- Leak proof, 1¼ turn screw-cap
- Vivid, printed graduations
- Sterile, with caps attached

Transport tubes (aka "mailing tubes") are used in multiple sectors of the laboratory market, including medical, hospital, environmental, independent testing, food testing, and biological research labs.

These tubes are made of polypropylene and are supplied with the screw-caps attached, sterile, in bags of 100 tubes. MTC Transport Tubes are self-standing and have a white printed marking spot and graduations.

Packed 10 bags of 100 tubes, 1000 tubes per case

Cat. No.	Description	Qty
C1811	5mL, w/ attached screw-cap, 100 per sterile bag, 16 x 60mm	1000
C1812	10mL, w/ attached screw-cap, 100 per sterile bag, 16 x 80mm	1000

# Snap-Cap 5mL MacroTubes®

- Compatible with standard equipment
- Withstands 25,000xg\*
- Easy-open flip top
- Unsurpassed clarity
- Dual graduations

MTC Bio's 5mL MacroTubes™ take all of the conveniences of standard 1.5mL tubes and scales them up for larger volumes. These polypropylene tubes come with an attached cap that not only provides a tight, leak proof seal, it can also be effortlessly opened (or closed) with one hand. The cap is designed to provide a secure seal from -86°C to +80°C. CapLock Clips™ are available to maintain the integrity of the seal at extreme temperatures. In incubated/heated applications, they may be "boiled" for up to 10 minutes. At temperatures above 80°C, the use of the CapLock Clip™ is recommended.

The tubes are made of maximum clarity, low-binding virgin polypropylene and are certified RNase & DNase free. Sterile tubes are also pyrogen free. They are sized to be compatible with all Benchmark™ (USA) and standard German-designed equipment, including centrifuges, dry bath block heaters, tube racks and thermal shakers/vortexers. The 16mm tube diameter is identical to the diameter of standard 15mL tubes, which ensures further compatibility with centrifuge rotors, etc. In many applications, these tubes have replaced 15mL tubes, dramatically reducing plastic waste, storage space and shipping costs. The potential contamination of pipettor shafts is greatly reduced because the 56mm total tube length (vs. 120mm for standard 15mL tubes) is short enough for standard 1mL or 5mL tips to reach the tube's conical bottom.

\* When properly supported in appropriate rotor.



**NEW**



**C2590**  
Two-tiered Pipetting Rack  
for 16 x 5mL tubes



**C2586**  
CapLock™ Clip recommended  
for extreme temperatures



**C2592**  
High volume gripper rack  
for 50 x 5mL tubes



**C2581**  
Polycarbonate cryobox for  
25 x 5mL tubes

Cat. No.	Description	Qty
C2500	MacroTube®, 5mL, free of RNase & DNase, natural color, 4 bags of 50	200
C2500-AST	MacroTube®, 5mL, free of RNase & DNase, rainbow pack, 4 bags of 50	200
C2500-B	MacroTube®, 5mL, free of RNase & DNase, blue, 4 bags of 50	200
C2500-G	MacroTube®, 5mL, free of RNase & DNase, green, 4 bags of 50	200
C2500-OB	MacroTube®, 5mL, free of RNase & DNase, opaque black, 4 bags of 50	200
C2500-R	MacroTube®, 5mL, free of RNase & DNase, red, 4 bags of 50	200
C2500-Y	MacroTube®, 5mL, free of RNase & DNase, yellow, 4 bags of 50	200
C2520	MacroTube®, 5mL, sterile, free of RNase & DNase & pyrogens, 10 bags of 20	200
C2570	Adapter for 5mL tubes in 15mL centrifuge	4
C2581	Freezer box, polycarbonate, for 25 (5x5) 5mL tubes. (5.25 x 5.25 x 2.75in.)	5
C2586	CapLock Clip™, with break-away lifting tab	20
C2590	Two-tiered pipetting rack for 16 x 5mL MacroTubes®	1
C2592	High volume gripper rack for 50 x 5mL tubes	1
C2595	MyFuge™ 5 Mini-centrifuge for 4 x 5mL tubes, 5500rpm (see next page)	1



Adapter for 5mL tube  
in 15mL Centrifuge

# Screw-Cap 5mL MacroTubes®

- Compatible with standard equipment
- Centrifuge at up to 25,000xg\*
- RNase, DNase free
- Unsurpassed clarity
- Dual graduations at every 0.2mL and 0.5mL

MTC Bio's 5mL Screw Cap Tubes are made of maximum clarity, low-binding virgin polypropylene and are certified RNase & DNase free. Sterile tubes are also pyrogen free. They are sized to be compatible with all Benchmark™ (USA) and standard German-designed equipment, including centrifuges, dry bath block heaters, tube racks and thermal shakers/vortexers.

Screw Cap Tubes are supplied with 20mm(OD) polyethylene caps that seal smoothly and completely with a single 360° turn. Useful from -86°C to 100°C, they are a valuable resource for boiling and for sample preservation at very low temperatures. Choose from non-sterile, bulk packaging with separate caps or gamma sterilized rack packaging. The foam racks are similar to the packaging normally associated with 15mL tubes (upright with caps attached), but they require about 60% less storage space.

Dimensions: 16x54mm (not including rim and cap). Total height with cap = 64mm.



Sterile tubes in snap-away rack

Cat. No.	Description	Qty
C2530	MacroTube®, 5mL, screw-cap, non-sterile, caps separate, 5 bags of 100	500
C2540	MacroTube®, 5mL, screw-cap, sterile, caps attached, 10 racks of 50	500
C2540-OB	MacroTube®, 5mL, screw-cap, sterile, caps attached, black, 10 racks of 50	500
C2570	Adapter for 5mL tubes in 15mL rotor	4
C2581	Freezer box, polycarbonate, for 25 (5x5) 5mL tubes (5.25 x 5.25 x 2.75in.)	5
C2590	Two-tiered pipetting rack for 16 x 5mL MacroTubes®	1
C2592	Workstation rack for 50 x 5mL MacroTubes®	1

## myFuge™ 5mL

- For quick spin downs of 5mL centrifuge tubes
- Includes adapters for 5mL blood tubes
- Starts and stops with closing/opening of the lid
- Conserves valuable bench space

### Specifications:

<b>Speed:</b>	5500 rpm / 2,000 xg
<b>Capacity:</b>	4 x 5mL tubes & 4 x 1.5/2.0mL
<b>Dimensions:</b>	5.5 x 7.9 x 5.5 in. (14 x 20 x 14cm)
<b>Weight:</b>	2.2 lbs. / 1 kg
<b>Electrical:</b>	Universal Voltage 100-240V, 50-60 Hz, 250W
<b>Warranty:</b>	1 Year



The MyFuge™ 5 microcentrifuge includes a four position rotor for compatibility with a variety of 5mL test tubes, including 5mL conical centrifuge tubes. In addition, this combination rotor has four additional slots for centrifuging standard microtubes (1.5/2.0mL). Simply close the lid and the centrifuge quickly accelerates to the fixed speed of 5500rpm. Open the lid, and the rotor decelerates to a stop for removing samples.

The 5mL rotor positions accept 5mL centrifuge tubes directly. 5mL blood & culture tubes (12x75mm) and cryovials are also accepted with the included adapters. The microtube positions are also designed to accept 0.5 and 0.2mL tubes with the use of adapters.

Cat. No.	Description	Qty
C2595	Mini Centrifuge for 4 x 5ml tube and 4 x 1.5/2.0mL tubes, 5500 rpm, universal voltage*	1

\* EU, UK and China/Australia plugs also available. Please inquire.

# FlowTubes™ For FACS

- Compatible with FACS (BD) instruments
- 12 x 75mm, 5mL capacity
- With or without 35µm strainer cap

Made of crystal clear virgin polystyrene, these 12x75mm FACS tubes are designed for most Fluorescence Activated Cell Sorting / flow cytometry equipment including FACS systems from BD Biosciences.

The diameter and wall thickness of the tube's neck are held to very tight tolerances to ensure consistent compatibility with automated instrumentation. They are available with the standard two-position culture cap, as well as with a cap that contains a 35µm nylon mesh screen, designed to assist in cell sorting/straining applications. These tubes and mesh caps are primarily used to collect dissociated sample for subsequent processing in automated flow cytometry instruments.

The exclusive tray pack (T9014) keeps the tubes neatly organized in boxes of 250 tubes, and requires approximately 34% less storage space than bulk tubes.



T9014



T9005/T9009  
35µm Strainer Cap

Cat. No.	Description	Qty
T9005	FlowTubes™ with strainer cap, sterile, 25 per bag	500
T9009	Strainer caps for FlowTubes, caps only, 25 per bag	500
T9010	FlowTubes™ with standard snap-cap, sterile, 25 per bag	500
T9014	FlowTubes™ without cap, sterile, 250 per tray pack	1000
T9019	Standard caps for FlowTubes™, caps only, 125 per bag	1000
T9020	FlowTubes™, without cap, non-sterile bulk econo-pack, 1000 per bag	4000



## Culture Tubes

- Sterile; RNase & DNase free
- Printed graduations
- Dual position caps attached
- Round Bottoms

These disposable sterile tubes are made of high quality polypropylene (PP) that will withstand temperatures from -190° to +120°C. They are also available in crystal clear polystyrene (PS) with a more limited range of 0° to 70°C. Caps are made of polyethylene (PE) and have the popular two position design (up/ loose for aerobic work and down/ sealed for anaerobic cultures). Polystyrene tubes may be centrifuged at up to 2000xg. Polypropylene tubes are able to withstand higher centrifugal forces, up to 4000xg.

Cat. No.	Description	Material	Dimensions	Packaging	Qty
T8301	Culture tubes, 5ml, sterile	PP	12 x 75mm	25/heat sealed bag	1000
T8305	Culture tubes, 5ml, sterile	PS	12 x 75mm	25/heat sealed bag	1000
T8320	Culture tubes, 5ml, sterile	PP	12 x 75mm	125/heat sealed bag	1000
T8300	Culture tubes, 5ml, sterile	PS	12 x 75mm	125/heat sealed bag	1000
T8225	Culture tubes, 14ml, sterile	PS	17 x 100mm	25/notched bag	1000
T8235	Culture tubes, 14ml, sterile	PP	17 x 100mm	25/notched bag	1000
T8250	Culture tubes, 14ml, sterile	PS	17 x 100mm	1/sterile peel	500
T8260	Culture tubes, 14ml, sterile	PP	17 x 100mm	1/sterile peel	500



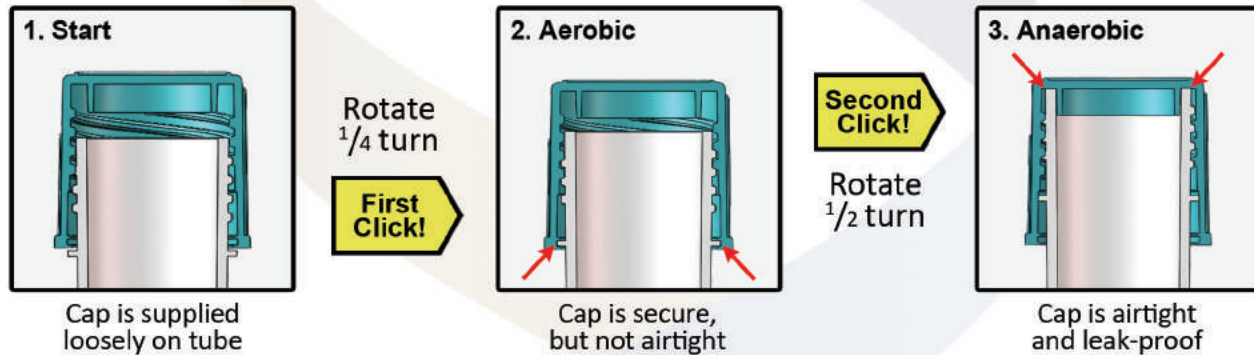
# DuoClick™ Screw-Cap Culture Tubes

- New screw-cap! (Patent Pending)
- Aerobic culturing at first click
- Anaerobic culturing after second click
- Easy to open - Easy to close
- Printed graduations
- Flat, markable screw-cap



MTC Bio's new DuoClick™ tubes feature a unique, patent pending screw closure system. DuoClick tubes completely eliminate the excess force, splashing and general frustration of traditional snap-cap culture tubes. The advanced cap design includes two distinct positions for aerobic and anaerobic culturing (see flow-chart below). Just rotate the cap 1/4 turn to the first click to secure the cap in the aerobic position. Or, rotate it another 1/2 turn past the second click for a leakproof, airtight seal for anaerobic culturing.

DuoClick tubes are available gamma sterilized, with screw caps attached, and in our exclusive ready-to-use rack packaging.



Cat. No.	Description	Qty
<b>12 x 75mm</b>		
T8730	12 x 75mm, sterile, polypropylene, attached cap, 20 bags of 25 tubes	500
T8732	12 x 75mm, sterile, polypropylene, attached cap, 10 foam racks of 50 tubes	500
T8734	12 x 75mm, sterile, polypropylene, attached cap, individually wrapped	500
T8741	12 x 75mm, sterile, polystyrene, attached cap, 8 bags of 125 tubes	1000
T8742	12 x 75mm, sterile, polystyrene, attached cap, 10 foam racks of 50 tubes	500
T8750	12 x 75mm, non-sterile, polypropylene, bulk-pack, non-graduated, tubes and caps packed separately	1000
<b>17 x 100mm</b>		
T8830	17 x 100mm, sterile, polypropylene, attached cap, 20 bags of 25 tubes	500
T8832	17 x 100mm, sterile, polypropylene, attached cap, 10 foam racks of 50 tubes	500
T8834	17 x 100mm, sterile, polypropylene, attached cap, individually wrapped	500
T8840	17 x 100mm, sterile, polystyrene, attached cap, 20 bags of 25 tubes	500
T8842	17 x 100mm, sterile, polystyrene, attached cap, 10 foam racks of 50 tubes	500
T8850	17 x 100mm, non-sterile, polypropylene, bulk-pack, non-graduated, tubes and caps packed separately	1000

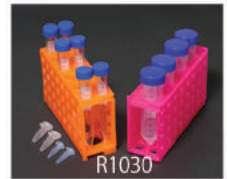
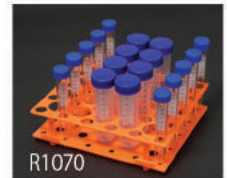
# Centrifuge Tubes

- Printed graduations and marking spot
- High clarity polymers
- Sterile; RNase & DNase free

Conical 15mL and 50mL centrifuge tubes are made of premium polypropylene for clarity and centrifugal strength. They are supplied sterile, and although they are autoclavable, their polyethylene screw caps are not. Caps have a flat top surface for easy marking. Cat. No. C2605 features a "skirted" bottom that allows the tube to stand upright without a separate test tube rack.



15mL      50mL      50mL Self-Standing



Individually Wrapped Tubes  
C2650-W / C2615-W



30mL Self-Standing Tube  
C2630

### Specifications:

	Conical	Self-standing
Max RCF:	15mL: 12,000xg* 50mL: 15,000xg*	30mL: 7,000xg* 50mL: 7,000xg*
Temp. Range:	All Tubes: -86°C to 121°C	
Material:	Tube: Polypropylene	Cap: Polyethylene

\*refers to liquids w/ a specific gravity of 1.0, using appropriate rotors, cushions and adapters.

Cat. No.	Description	Dimensions	Packaging	Qty
C2600	15mL Centrifuge Tube w/ cap, PP	17x121mm	50 in sterile foam rack	500
C2601	15mL Centrifuge Tube w/ cap, PP	17x121mm	50 in sterile notched bag	500
C2602	50mL Centrifuge Tube w/ cap, PP	29x115mm	25 in sterile foam rack	500
C2603	50mL Centrifuge Tube w/ cap, PP	29x115mm	25 in sterile notched bag	500
C2603-B	50mL Centrifuge Tube w/ cap, PP	29x115mm	Non-sterile bulk bag	500
C2605	50mL Free Standing Tube w/ cap, PP	29x116mm	25 in sterile notched bag	500
C2630	30mL Free Standing Tube w/ cap, PP	29x81mm	25 in sterile notched bag	500
C2615-W	15mL Centrifuge Tube w/ cap, PP	17x121mm	Individually wrapped	300
C2650-W	50mL Centrifuge Tube w/ cap, PP	29x115mm	Individually wrapped	300
R1030	4-way rack, for 50mL, 15mL, & 0.5/1.5mL	6.9 x 3.7 x 2.0in.	Rainbow Pack	5
R1070	Combo-rack for 30 x 15mL & 20 x 50mL	8.1 x 6.7 x 2.4in.	Orange	5

MTC Bio's new **SpectraTube™** line is a new twist on the standard 15mL & 50mL centrifuge tube design. We've reconfigured the classic blue cap packaging and placed the tubes conveniently in a foam rack with 5 different cap colors to make sample identification easier than ever. Alternatively, SpectraTubes are available in non-racked bags of 25, with each bag containing a single cap color (4 bags of each color, 5 colors in all).

## SpectraTubes™



All dimensions and specifications are the same as our standard, blue cap tubes shown above.



C2716: Bagged Tubes

Cat. No.	Description	Qty
C2715	15mL Centrifuge tubes w/ rainbow caps, sterile, 50 per foam rack	500
C2750	50mL Centrifuge tubes w/ rainbow caps, sterile, 25 per foam rack	500
C2716	15mL Centrifuge tubes w/ rainbow caps, sterile, single color bags, 25 tubes per bag (4 bags of each color)	500
C2751	50mL Centrifuge tubes w/ rainbow caps, sterile, single color bags, 25 tubes per bag (4 bags of each color)	500

# SureStrain™ Cell Strainers

The SureStrain™ Premium Cell Strainer system is a fast and easy-to-use solution for detaching, isolating and straining cells from clusters and tissues. A polypropylene frame supports a nylon mesh that is available in three color-coded porosities: 40µm (blue), 70µm (white), and 100µm (yellow). A tiered filtration process is made possible by the SureStrain's unique interlocking stackable design.

SureStrain's molded grip and unique geometry ensure aseptic handling and eliminate the contamination risks associated with fingers contacting the filtered suspension, mesh and/or interior surfaces. The sterile strainer can be easily removed from the special blister packaging without touching its interior surface or mesh.

The advanced frame/housing design also contributes to enhanced performance and reduced processing time, by eliminating the "air-lock" effect. Improved aeration allows air to escape while filtrate is entering the tube, preventing messy spillovers. Simply open the sterile package, attach the strainer to the top of a 50mL tube and add your cell suspension/sample. Or, attach the provided reducing adapter for use in 5mL or 15mL tubes. SureStrain produces an optimized filtrate ready for maximum flow in separation columns and cytometers.



Cat. No.	Description	Qty
C4040	40µm, blue, sterile, individually wrapped, w/ one reducing adapter	50
C4070	70µm, white, sterile, individually wrapped, w/ one reducing adapter	50
C4100	100µm, yellow, sterile, individually wrapped, w/ one reducing adapter	50
C4015	Reducing adapter for use with 12x75mm, 5mL and 15mL tubes	50
C4010	PolyPestle™ dual-sided pestle for cell strainers & 1.5mL microtubes, sterile, individually wrapped	25



NEW



40µm



70µm



100µm

Watch the Video!



Reducing adapter for 5 & 15mL tubes



Reducing adapter equipped on 15 & 5mL tubes



PolyPestle™ Dual sided Pestle for strainers & microtubes



Stackable



Four 2mm tall feet For use with plates and dishes

## NEW ReadyStrain™

Ready to Use!  
tube, strainer, cap



ReadyStrain™ is the first product of its kind, providing all the necessary parts for filtration of cell suspensions and combining them into a single, preassembled, ready to use, sterile packet. These kits eliminate the contamination risks associated with opening multiple packages, and assembling separate pieces (i.e. tubes strainers and caps). The individual sterile packets mean researchers are no longer forced to expose entire bags of 50mL tubes and corresponding caps in order to perform one filtration. Instead they can open a single ReadyStrain packet directly under the hood. Each kit contains a sterile SureStrain™ Strainer, pre-attached to a sterile 50mL tube, with a separate sterile screw-cap ready for assembly, processing and storage after the filtration is complete. Kits are supplied in easy open "tear-strip" bags and gamma sterilized.

### What's included:

- 1 x 50mL Centrifuge Tube w/ Graduations
- 1 x Attached SureStrain™ Cell Strainer (40, 70 or 100µm)
- 1 x Screw Cap for 50mL Centrifuge Tube

Kits supplied sterile, preassembled, in individual easy-open bags, 50/pk



Cat. No.	Description	Qty
C5040	Cell straining kit, with strainer, 50mL tube and screw-cap, 40µm, blue, sterile, individually wrapped	50
C5070	Cell straining kit, with strainer, 50mL tube and screw-cap, 70µm, white, sterile, individually wrapped	50
C5100	Cell straining kit, with strainer, 50mL tube and screw-cap, 100µm, yellow, sterile, individually wrapped	50

# Western Blot Boxes

- For wholes, halves, strips or minis
- A perfect box for every blot
- Reduce antibody usage
- Hinged lid reduces evaporation
- Opaque black sizes available



B1200-7



B1200-13

B1200-17

Cat. No.	Description	Application	Qty
B1200-3	Micro-strip, 73 x 30 x 19mm	Various	5
B1200-5	Mini-rectangle, 73 x 51 x 32mm	Half mini-protein gels	5
B1200-7	Rectangle, 89 x 65 x 25mm	Mini-protein gels	5
B1200-7BK	Rectangle, 89 x 65 x 25mm, Black	(Bio-Rad Proteran 3 & similar)	5
B1200-9	Long strip, 95 x 30 x 16mm	Protean 3 (cut up)	5
B1200-11	Medium strip, 111 x 52 x 47mm	Various	5
B1200-13	Large, 117 x 89 x 28mm	Cambrex PAGER Gold, Novex, Might Small, SureLock mini	5
B1200-13BK	Large, 117 x 89 x 28mm, Black		5
B1200-15	Square, 116 x 116 x 32mm	Owl Penguin P9DS/Puffin	5
B1200-15BK	Square, 116 x 116 x 32mm, Black		5
B1200-17	Extra Large, 152 x 102 x 32mm	Bio-Rad Criterion, Amersham	5
B1200-19	XXL, 152 x 102 x 51mm	Bio-Rad Criterion, Amersham	5
B1300-8BK	Square, 85x85x28mm, Pull-Off Lid, Blk	Novex™ Mini Gels	10

No matter what size your blot is, there's an MTC box that fits it perfectly. With boxes that are correctly matched to common blot sizes, you can fit more blots on shakers/rockers while keeping reagent and antibody usage to an absolute minimum. Additionally, all corners are formed at a 90° angle and the bottom surface is uniformly flat, further reducing consumption of costly reagents and antibodies. (For example, popular mini-gels require only about 4mL.)

At a price that makes them truly disposable, all sizes are engineered from crystal clear polystyrene (except B1200-7BK, B1200-13BK, B1200-15BK & B1300-8BK, which are an opaque black that protects light sensitive samples). All sizes except B1300-8BK are also equipped with an easy-to-open hinged lid that reduces evaporation.

## Western MultiBoxes™



B1212



B1203



B1204



B1206

New from MTC Bio, the MultiBox™ Western Blotting Box family. The popularity of our 6-place box has proven that researchers love the ease and convenience of using one box to process multiple gels. We've taken some of our most popular box sizes, and multiplied them, allowing end-users to compare results side by side in real time.

Cat. No.	Compartments	Box Dims. (LxWxH)	Compartment Dims. (LxWxH)	Qty
B1212	2 compartments	85 x 174 x 30mm	85 x 85 x 30mm	6
B1203	4 compartments	72 x 115 x 28mm	32 x 53 x 28mm	6
B1204	4 compartments	80 x 142 x 28mm	38 x 71 x 38mm	6
B1206	6 compartments	107 x 210 x 35mm	33 x 103 x 35mm	4



# BluLite™ UHC Western Blotting Film

- Light Blue Base
- Ideal for Chemiluminescence
- Suitable for  $^{14}\text{C}$ ,  $^{32}\text{P}$ ,  $^{33}\text{P}$ ,  $^{125}\text{I}$ ,  $^{35}\text{S}$
- Ultra-High Contrast
- Reduced Background
- Publication Quality

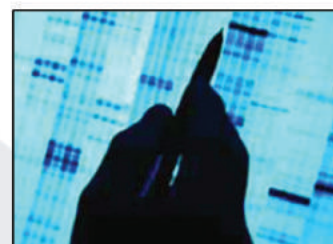
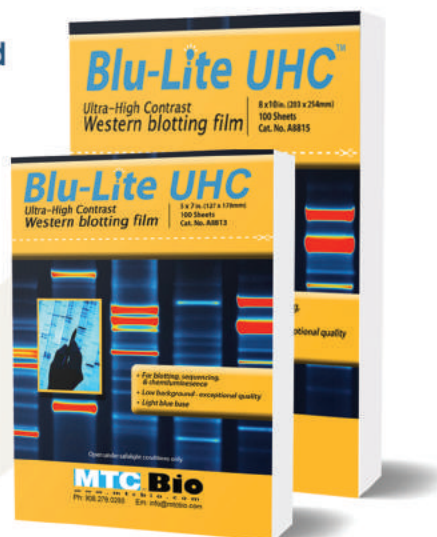
BluLite™ UHC is MTC Bio's most popular line of high contrast, blue-sensitive autoradiography film. Blue-Lite film is specially formulated for an optimized balance of high contrast and minimal background. This low background, high contrast formula is produced on a lighter blue base, making it ideal for all autoradiographic and electrophoretic applications.

In addition to Blu-Lite's sensitivity and increased contrast characteristics, it is also coated on both sides (double emulsion) for improved consistency and overall performance. This new film reliably produces sharp images which allow for maximum DNA visualization with unsurpassed clarity.

Especially useful with chemiluminescence, Blu-Lite™ HS works well with  $^{14}\text{C}$ ,  $^{32}\text{P}$ ,  $^{33}\text{P}$ ,  $^{125}\text{I}$ , and  $^{35}\text{S}$ .

Compatible with automatic processors and manual development methods, Blu-Lite compares directly with films costing 3-5 times as much.

With a shelf life of at least 18 months from date of production, Blu-Lite is packaged in lined, light-safe dispenser boxes that include an improved "lift-off" cover. Film is packaged 100 sheets per box.



Cat. No.	Description	Qty
A8813	BluLite™ UHC Western Blotting Film, 5x7in.	100/box
A8815	BluLite™ UHC Western Blotting Film, 8x10in.	100/box

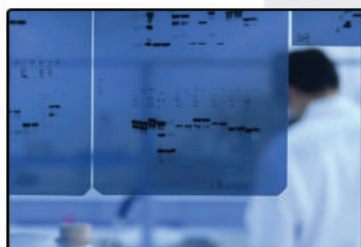
# BluBlot™ Western Blotting Film

- Medium/Dark Blue Base
- Suitable for  $^{14}\text{C}$ ,  $^{32}\text{P}$ ,  $^{33}\text{P}$ ,  $^{125}\text{I}$ ,  $^{35}\text{S}$
- Ideal for Chemiluminescence
- Publication Quality
- Double Emulsion
- High Sensitivity

BluBlot™ HS is a high quality, highly sensitive film that is ideal for a wide range of electrophoretic and autoradiography applications. It can be used with calcium tungstate or blue-emitting rare-earth screens. BluBlot™ HS exhibits excellent sensitivity and is coated on both sides for improved consistency and overall performance. It reliably produces sharp, bright images that are easily visualized and suitable for publication.

Especially useful with chemiluminescence, BluBlot™ HS works well with  $^{14}\text{C}$ ,  $^{32}\text{P}$ ,  $^{33}\text{P}$ ,  $^{125}\text{I}$ , and  $^{35}\text{S}$ .

Compatible with automatic processors and manual development methods, BluBlot HS compares directly with films costing up to 3 times as much. With a shelf life of at least 18 months from date of production, BluBlot™ HS is packaged in lined, light-safe dispenser boxes of 100 sheets per box.



Cat. No.	Description	Qty
A8803	BluBlot™ HS Western Blotting Film, 5x7in.	100/box
A8805	BluBlot™ HS Western Blotting Film, 8x10in.	100/box

# Multi-Channel Solution Reservoirs

- Graduated inner walls
- Micro-trough™ U-shaped bottoms
- Pouring spouts on all 4 corners
- Sterile and disposable

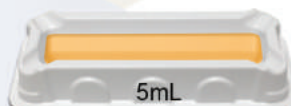


	Cat. No.	Description	Qty
25mL	P8025	Reservoir, 25mL, bulk pack	100
	P8025-1S	Reservoir, 25mL, sterile, individually wrapped	100
	P8025-5S	Reservoir, 25mL, sterile, 5/sterile bag	200
50mL	P8050	Reservoir, 50mL, bulk pack	100
	P8050-1S	Reservoir, 50mL, sterile, individually wrapped	100
	P8050-5S	Reservoir, 50mL, sterile, 5/sterile bag	200
50mL Div	P8051	Reservoir, 50mL, 8 PLUS 4™ divided, bulk pack	100
	P8051-1S	Reservoir, 50mL, 8 PLUS 4™ divided, sterile, individually wrapped	100
	P8051-5S	Reservoir, 50mL, 8 PLUS 4™ divided, sterile, 5/sterile bag	200
100mL	P8100	Reservoir, 100mL, bulk pack	100
	P8100-1S	Reservoir, 100mL, sterile, individually wrapped	100
	P8100-5S	Reservoir, 100mL, sterile, 5/sterile bag	200

Standard 4-channel, 8-channel, 12-channel and various special purpose pipettes are all compatible with these disposable, polystyrene reservoirs. To facilitate easy, dripless pour-off of unused reagents and solutions, all versions have indented "spouts" in each corner. Each size is formed with a MicroTrough™ U-shaped bottom to minimize waste and reagent consumption. Packaged in notched, easy-open, tear strip bags.

## NEW ASPIR-8™ Reservoirs

- Specially designed for 8-Channel Pipettes
- 75mm Inner Chamber
- Conserve valuable reagents



Our new ASPIR-8™ is the ideal reservoir for any lab utilizing 8-channel pipettes. The strict inner dimensions are designed specifically for 8-channels, thus conserving space and reagent compared to its longer 12-channel counterparts that require 33% more reagent. This narrower design minimizes reagent exposure and usage. ASPIR-8 is the only reservoir that is tailor-made for your 8-channel instrument. Packaged in notched, easy-open, tear strip bags.

	Cat. No.	Description	Qty
5mL	P7005	ASPIR-8™ Reservoir for 8-Channel Pipettes, 5mL, bulk pack	300
	P7005-1S	ASPIR-8™ Reservoir for 8-Channel Pipettes, 5mL, sterile, individually wrapped	100
	P7005-5S	ASPIR-8™ Reservoir for 8-Channel Pipettes, 5mL, sterile, 5/sterile bag	200
10mL	P8010	ASPIR-8™ Reservoir for 8-Channel Pipettes, 10mL, bulk pack	300
	P8010-1S	ASPIR-8™ Reservoir for 8-Channel Pipettes, 10mL, sterile, individually wrapped	100
	P8010-5S	ASPIR-8™ Reservoir for 8-Channel Pipettes, 10mL, sterile, 5/sterile bag	200
25mL	P7025	ASPIR-8™ Reservoir for 8-Channel Pipettes, 25mL, bulk pack	100
	P7025-1S	ASPIR-8™ Reservoir for 8-Channel Pipettes, 25mL, sterile, individually wrapped	100
	P7025-5S	ASPIR-8™ Reservoir for 8-Channel Pipettes, 25mL, sterile, 5/sterile bag	200

# CoolCaddy™ PCR Work Station

- Maintains 2-4°C for 5 hours
- Keeps samples cool, but not frozen
- Accommodates several different vessel types
  - Vials, tubes, strips, plates, and reservoirs

The CoolCaddy™ keeps your reagents and samples cool, on the lab bench, without using crushed ice. Simply store your CoolCaddy overnight in any standard freezer and it's ready to hold temperature between 2° and 4°C for up to 5 hours. Tubes, plates, strips and multi-channel reservoir solutions can all be kept cool while you perform your experiments. CoolCaddy is ideal for transporting your experiment from the bench to the freezer.



**Capacity:**

- 1.5/2.0mL Microtubes: 9 Tubes
- 2.0mL Cryotubes: 8 Tubes
- 0.5mL Microtubes: 5 Tubes
- PCR Plates: 1 Plate
- PCR Tubes: 96 Tubes or 12 Strips
- Reservoirs: 1 x 50mL Reservoir (i.e. P8050, P8051)

Cat. No.	Description	Qty
R4015	CoolCaddy™ PCR Work Station, (17 x 21 x 4.5cm / 8.3 x 6.8 x 1.8in.)	1

## **NEW** BioBucket™ Collapsible Bucket

- Collapsible body saves valuable storage space
- Useable with dry or crushed ice
- Inner-lid access port for enhanced temperature retention
- Attached handle and molded base grip

BioBucket™ is a general laboratory container that every lab could benefit from. Its collapsible nature makes it the ideal container for any lab or field operation looking to conserve storage space. BioBucket can be used as an ice bucket to keep samples cool over long periods of time, or as portable liquid container. The attached handle makes transportation a breeze, while the molded base grip allows for easy pouring and cleaning. The BioBucket is perfect for field use as an environmental sample collection and transport receptacle.



Cat. No.	Description	Qty
B8300	BioBucket™ Collapsible Laboratory Bucket	1



## Cryogenic Boxes

- Polycarbonate, withstands -196°C
- Convenient hinged lid
- Unique barcode on every box

New ultra-low temperature storage boxes are designed to hold 1.2mL to 2.0mL cryogenic storage vials. An excellent and long-lasting replacement for cardboard boxes, they are fully autoclavable and withstand temperatures ranging from -196°C to +121°C. They are compatible with all standard 5 1/4 inch (133mm) freezer racks. Clear lids are hinged and have printed indexing for sample identification purposes.

Cat. No.	Description	Dimensions	Qty
R2081	Cryo storage box, 81 place (9 x 9), polycarbonate, with hinged lid	5.25 x 5.25 x 2in.	5
R2100	Cryo storage box, 100 place (10 x 10), polycarbonate, with hinged lid	5.25 x 5.25 x 2in.	5

# FlipTop™ Hinged Lid Cardboard Boxes



- Attached hinged lids foolproof identification
- 5¼ x 5¼ x 2in. for existing racks
- Available in 6 colors individual or rainbow packs
- For 81 or 100 tubes 9 x 9 or 10 x 10 format
- Alpha-numeric coding top, sides, and bottom

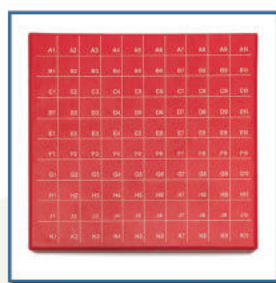
MTC Bio's new FlipTop™ hinged lid boxes are made of recyclable cardboard, with a liquid resistant outer coating. They are shipped fully assembled with 81 place or 100 place cardboard dividers. Each box has drain slots on the bottom surface and numbered grid markings in almost every conceivable location (top, bottom, sides, etc.). Available in white and 5 individual colors, plus a "Rainbow Pack" of 5 assorted colors.



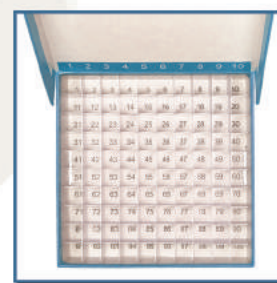
Hinged Lid



LN2 Draining Slots



External Grid Code



Internal Grid Code

Cat. No.	Description	Capacity	Color	Qty
R2781	FlipTop™ hinged lid cardboard freezer boxes, with dividers	81-place	White	5/pk
R2781-B	FlipTop™ hinged lid cardboard freezer boxes, with dividers	81-place	Blue	5/pk
R2781-G	FlipTop™ hinged lid cardboard freezer boxes, with dividers	81-place	Green	5/pk
R2781-O	FlipTop™ hinged lid cardboard freezer boxes, with dividers	81-place	Orange	5/pk
R2781-P	FlipTop™ hinged lid cardboard freezer boxes, with dividers	81-place	Purple	5/pk
R2781-R	FlipTop™ hinged lid cardboard freezer boxes, with dividers	81-place	Red	5/pk
R2781-A	FlipTop™ hinged lid cardboard freezer boxes, with dividers	81-place	Assorted	5/pk
R2700	FlipTop™ hinged lid cardboard freezer boxes, with dividers	100-place	White	5/pk
R2700-B	FlipTop™ hinged lid cardboard freezer boxes, with dividers	100-place	Blue	5/pk
R2700-G	FlipTop™ hinged lid cardboard freezer boxes, with dividers	100-place	Green	5/pk
R2700-O	FlipTop™ hinged lid cardboard freezer boxes, with dividers	100-place	Orange	5/pk
R2700-P	FlipTop™ hinged lid cardboard freezer boxes, with dividers	100-place	Purple	5/pk
R2700-R	FlipTop™ hinged lid cardboard freezer boxes, with dividers	100-place	Red	5/pk
R2700-A	FlipTop™ hinged lid cardboard freezer boxes, with dividers	100-place	Assorted	5/pk

# Weigh Boats



- Antistatic and biologically inert
- Smooth surface / rounded corners
- Recessed corners; precise pouring
- White or black for visual contrast

MTC Bio's Weigh Boats are useful for liquid, powder or granular samples. They are made of antistatic polystyrene and will withstand temperatures to 90°C, as well as exposure to diluted acids, alcohols, bases and aqueous solutions. Weigh Boats are available in the traditional square shape as well as in a new diamond shape for easier pouring and more stable transfer of liquids.



WeighBucket™ - Weigh Boat for Liquids!

Black	White	Description	Qty
B6001B	B6001W	Square Weigh Boats, 20mL, 45 x 45mm	500
B6002B	B6002W	Square Weigh Boats, 100mL, 80 x 80mm	500
B6003B	B6003W	Square Weigh Boats, 250mL, 140 x 140mm	500
B6501B	B6501W	Diamond Weigh Boats, 5mL, 35 x 55mm	500
B6502B	B6502W	Diamond Weigh Boats, 30mL, 65 x 85mm	500
B6503B	B6503W	Diamond Weigh Boats, 100mL, 100 x 125mm	250
	B6602-W	WeighBucket™, 40mL with handle, 33 x 53mm	500

# Storage Racks and Boxes

- Polypropylene, withstand -80°C
- 6 types - for 0.2mL to 50mL
- Compact & space efficient
- Autoclavable

MTC Bio's benchtop tube racks are made of autoclavable polypropylene and are available in three popular configurations. No. R1030 is a 4-way rack that can be used to hold 4 x 50mL, 12 x 15mL or 32 microtubes (0.5, 1.5 or 2.0mL). They can be snap-linked together to form as large a rack as is needed. No. R1070 is a unique rack that holds 30 x 15mL and 20 x 50mL. No. R1050 is a reversible rack for 96 x 1.5mL on one side and 96 x 0.5mL on the other.

Suitable for refrigerator and freezer storage as low as -80°C, MTC Bio's Freezer/storage boxes have translucent lids and numbered cavities. No. R1010 is a PCR workstation rack/box for 96 x 0.2mL (plates, strips or individual tubes). No. R1020 is a 10x10 format with an attached hinged lid. No. R1060 is the standard 9x9 format with a friction fit lid.



Cat. No.	Description	Qty
R1010	Box rack w/ lid for 96 x 0.2mL (tubes strips or plate), rainbow pack	5
R1020	Storage box w/ hinged lid for 100 x 1.5mL tubes, rainbow pack	5
R1020-B	Storage box w/ hinged lid for 100 x 1.5mL tubes, blue	5
R1020-BK	Storage box w/ hinged lid for 100 x 1.5mL tubes, black	5
R1020-G	Storage box w/ hinged lid for 100 x 1.5mL tubes, green	5
R1020-O	Storage box w/ hinged lid for 100 x 1.5mL tubes, orange	5
R1020-R	Storage box w/ hinged lid for 100 x 1.5mL tubes, red	5
R1020-Y	Storage box w/ hinged lid for 100 x 1.5mL tubes, yellow	5
R1030	4-way rack for 50mL, 15mL, 1.5mL and 0.5mL tubes, rainbow pack	5
R1050	Reversible rack for 96 x 1.5mL or 0.5mL tubes, orange	5
R1060	Freezer box for 81 x 2mL tubes, friction fit lid, rainbow pack	5
R1070	Combo-rack or 30 x 15mL and 20 x 50mL tubes, orange	5



# ProPette™ LE Pipettors



- Adjustable with *Roto-Lock™*
- Light weight with reduced forces
- Full volume range (0.1µL - 10mL)
- Superior accuracy and reproducibility

## Single Channel

Cat. No.	Description	Qty
P5200-2U	ProPette™ LE Single Channel Pipette, 0.2 to 2µL	1
P5200-10U	ProPette™ LE Single Channel Pipette, 1 to 10µL	1
P5200-20U	ProPette™ LE Single Channel Pipette, 2 to 20µL	1
P5200-50U	ProPette™ LE Single Channel Pipette, 5 to 50µL	1
P5200-100U	ProPette™ LE Single Channel Pipette, 10 to 100µL	1
P5200-200U	ProPette™ LE Single Channel Pipette, 20 to 200µL	1
P5200-300U	ProPette™ LE Single Channel Pipette, 30 to 300µL	1
P5200-1M	ProPette™ LE Single Channel Pipette, 100 to 1000µL	1
P5200-5M	ProPette™ LE Single Channel Pipette, 1 to 5mL	1
P5200-10M	ProPette™ LE Single Channel Pipette, 1 to 10mL	1
P4280-CR	Pipette Carousel, for 6 universal pipettes, including Gilson, VWR, Labnet, Corning, Poseidon, etc.	1



The ProPette™ LE is the next generation of high precision liquid handling instruments from MTC Bio. Designed for use with standard tips, this newest addition to the ProPette family features improved actuation forces and a nearly 20% reduction in overall weight. Every aspect of accuracy, reliability and user comfort has been carefully reviewed in designing these high precision pipettes. The result is an advanced pipette that exhibits superior accuracy and ergonomics and is comfortable to use, even during prolonged and repetitive pipetting.

## Multi-Channel

Cat. No.	Description	Qty
P5208-10	ProPette™ LE 8-Channel Pipette, 1.0 to 10µL	1
P5208-20	ProPette™ LE 8-Channel Pipette, 2.0 to 20µL	1
P5208-50	ProPette™ LE 8-Channel Pipette, 5.0 to 50µL	1
P5208-200	ProPette™ LE 8-Channel Pipette, 20 to 200µL	1
P5208-300	ProPette™ LE 8-Channel Pipette, 30 to 300µL	1
P5212-10	ProPette™ LE 12-Channel Pipette, 1.0 to 10µL	1
P5212-20	ProPette™ LE 12-Channel Pipette, 2.0 to 20µL	1
P5212-50	ProPette™ LE 12-Channel Pipette, 5.0 to 50µL	1
P5212-200	ProPette™ LE 12-Channel Pipette, 20 to 200µL	1
P5212-300	ProPette™ LE 12-Channel Pipette, 30 to 300µL	1



# Specialty Pipette Tips



- 300µL racks and refills
- 5 and 10mL bagged
- RNase & DNase Free

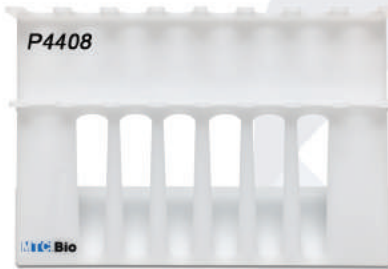
Cat. No.	Description	Qty
P4300-RK	Pipette Tips, 300µL, 10 racks of 96 tips	960/cs
P4300-RF	Pipette Tips, 300µL, 10 refill wafers of 96 tips	960/cs
P4305	Pipette Tips, 5mL, bagged, for Propette™ LE	250/bag
P4311	Pipette Tips, 10mL, bagged, for Propette™ LE	100bag



# SureStand™ Pipette Stands

Patent Pending

- Universal - Fits all popular pipettes
- Sturdy, 5mm thick acrylic
- Non-skid rubber feet
- Multichannel "window" slots



SureStand's "window" slots are the first of their kind, allowing the user to store single channel or multi-channel pipettes easily and conveniently.



Cat. No.	Description	Qty
P4403	Surestand, 3-place, for up to one multi-channel	1
P4405	Surestand, 5-place, for up to two multi-channels	1
P4406	Surestand, 6-place, for up to four multi-channels	1
P4408	Surestand, 8-place, for up to six multi-channels	1

SureStand™ Pipette racks are unique in their ability to accommodate multi-channel pipettes without sacrificing any of the stability of a traditional acrylic rack. The patent pending "windows" allow the user to insert the multi-channel head longways through the rack, while keeping the body of the pipette stable by securing the pipette at two points; under the finger hook, and near the bottom of the handle. Each SureStand is also outfitted with four non-skid rubber "feet" for extra stability. SureStand is guaranteed to be the sturdiest and most versatile pipette rack in your lab.

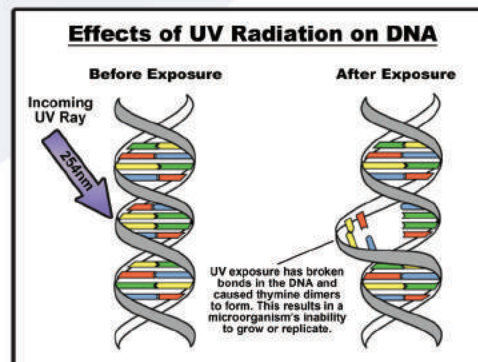


# nUVaClean™ UV Pipette Carousel

Patent Pending



- Destroys 99% of stray DNA
- Protects from cross contamination
- UV-C emitting mercury vapor lamp
- Exposes 360° of pipette shafts
- Fits virtually any pipette



Introducing - the first and only pipette rack that not only organizes and protects six pipettes, but also destroys up to 99% of unwanted contamination. The new nUVaClean uses a UV-C mercury vapor lamp and a high-efficiency reflector/concentrator to completely bathe pipette shafts in 254nm UV light. This exposure destroys unwanted microbiological contaminants and prevents cross-contamination in PCR and other sensitive procedures. Just place single-channel pipettes of any range or brand in the nUVaClean™ and press the "start" button to begin the 28 minute auto-decon cycle. The nUVaClean will expose 360° of the pipettes shafts to DNA-destroying UV-C, and the result is a clean pipette, ready for experimentation.

Cat. No.	Description	Qty
P5590	ProPette nUVaClean™ UV Pipette Carousel, with 254nm germicidal UV lamp, for 6 universal pipettes, universal voltage*	1

\* EU, UK and China/Australia plugs also available. Please inquire.

# ProPette™ Electronic Pipette Controller

- Variable Speed Control
- Cordless and rechargeable
- 8 hours continuous operation
- For pipettes from 1mL to 100mL
- With QuickStand™ Retractable Kickstand

ProPette™ Controllers from MTC Bio™ are light-weight (only 6.3oz/170g) and designed to fit comfortably in either the right or the left hand. The natural feel of the ergonomic body design, the computer balanced weight distribution and the low pressure fingertip control buttons...all combine to provide a more comfortable pipetting experience.

A long-life rechargeable lithium (environmentally friendly) battery keeps the controller running for up to 8 hours or 2500 pipettings on a single two hour charge. ProPette's easy-fit silicone nosepiece accepts pipette sizes from 1mL to 100mL. With its light-weight advanced ergonomics, continuously variable electronic speed adjustment and extended lithium battery life, the ProPette Pipette Controller is the logical choice for comfort, convenience and value.

QuickStand™  
Demonstration!



Variable speed control

Cat. No.	Description	Qty
P6080	ProPette™ Electronic Pipette Controller, with QuickStand™ (USA 115V)	1
P6080-I	ProPette™ Electronic Pipette Controller, with QuickStand™ (Euro 230V)*	1
P6080-FI	Replacement filters, 0.45µm	5
P6080-BA	Replacement battery, lithium, 5.0V,700mA	1
P6080-NA	Replacement silicone nosepiece adapter, autoclavable	1
P6080-RC	Replacement Charger 100-240V for worldwide use	1

\* UK and China/Australia plugs also available. Please inquire.

# ProPette™ REACH Long Neck Controller



- Extended neck for ergonomics
- Perfect for use under the hood
- Allows user to rest elbow on bench
- QuickStand™ Retractable Kickstand
- 8-hour rechargeable battery life
- Pressure-sensitive speed control

ProPette REACH™ brings a new level of user comfort to pipetting with serological pipettes. Its extended neck does all the reaching while the user's elbow rests on the benchtop or hood surface. ProPette REACH™ eliminates the discomfort and fatigue normally associated with aspirating and dispensing under a hood. It dramatically reduces the amount of arm lift required to aspirate and dispense in bottles, flasks and dishes. This takes pressure off of the shoulder, elbow and wrist while minimizing the risk of repetitive strain injuries. ProPette REACH™ also includes the patented QuickStand™, which defaults to a neutral and out-of-the-way position, but can be folded back to support the pipette at an ideal angle, acting as a virtual "pause button" during research.

Cat. No.	Description	Qty
P6950	ProPette™ REACH Long Neck Pipette Controller, (USA 115V)*	1
P6950-I	ProPette™ REACH Long Neck Pipette Controller, (Euro 230V)*	1

\*See P6080 ordering information for replacement filters, batteries, chargers, etc. UK and China/Australia plugs also available. Please inquire.



# ProPette™ Manual Pipette Controller



- Accomodates pipettes up to 100mL
- Easy, single lever control
- Autoclavable lower body
- Fingertip speed control

ProPette™ MPC is the high precision manual pipette controller that's always ready to use. After attaching a pipette, one squeeze of its large rubber filling bulb is all it takes to start pipetting - there are no wires, no tubing and no battery to recharge! Begin aspirating by touching the EZ-Flow™ lever. It precisely controls the filling speed, based on how gently (or firmly) you press the lever. A built-in replaceable filter protects the controller from liquid penetration. A separate button provides a positive blow-out function when required. Made to accept pipettes from 0.1mL to 100mL, the silicone "chuck" adapter is flexible, autoclavable, and accepts all types of serological, "blow-out", "to deliver," glass and plastic pipettes.

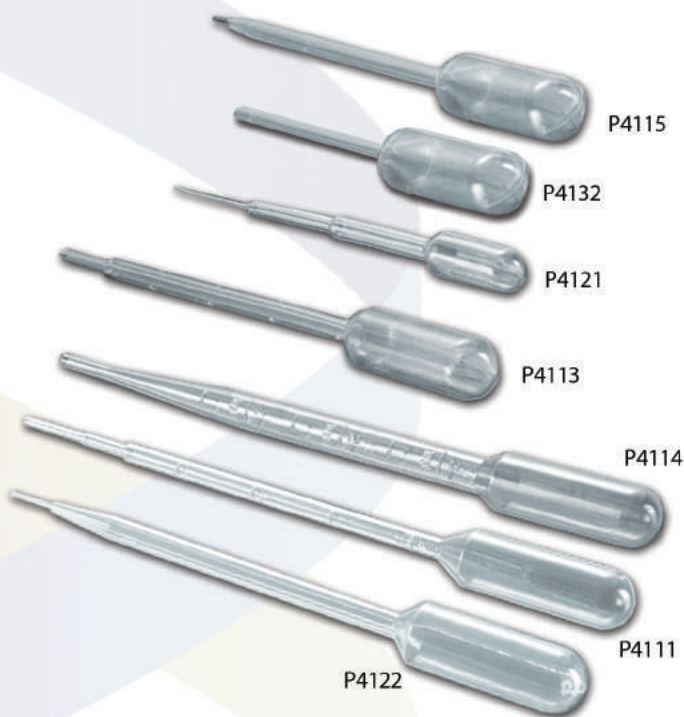
Cat. No.	Description	Qty
P6420	ProPette™ Manual Pipette Controller with filter	1
P6080-FI	Replacement filters	5

## Transfer Pipettes

- Transparent, non-toxic and inert
- Precise, uniform drop size
- Shatter-proof and unbreakable
- Can be used with LN<sub>2</sub> (-196°C)
- Heat Sealable

These unbreakable, one-piece pipettes eliminate contaminated rubber bulbs, broken glass and exposure to infectious materials. They are made of ultra-clear, low density polyethylene (LDPE) and are ideal for microbiology, blood banking, hematology, immunology, and urinalysis. Sterile pipettes are excellent for micro-biology and tissue culture applications. Their low-affinity surface reduces sample, cell or protein loss.

Whether you make your selection based on length, bulb draw, pipette capacity or number of drops per mL, one of these designs is likely to be suitable for your application. Some have ultra-fine extended tips (P4113, P4117, P4121, P4122, P4133) that allow for extremely precise dispensing and access into the narrowest vessels. They can also be heat sealed for airtight sample storage. Their uniform drop size can be used for reproducible spotting of gels & TLC plates, and for dispensing into test plates, ID strips, PCR tubes or 96 well plates.



Description	Bulb Draw	Drops per mL	Length	Bulk Non-sterile	Qty/ Pack	Sterile indiv. wrap	Qty/ Pack	Sterile 20/peel	Qty/ Pack
5mL, large bulb	3.5mL	22	150mm	P4111-00	250	P4111-11	500	P4111-14	500
5mL, large bulb, graduated	3.5mL	25	160mm	P4113-00	250	P4113-11	500		
7mL, large bulb, graduated	3.5mL	21	160mm	P4114-00	250	P4114-11	500	P4114-14	500
5mL, blood bank, graduated	2.4mL	22	155mm	P4115-00	250	P4115-11	500	P4115-14	500
3mL, short bulb	1.5mL	22	138mm	P4117-00	250	P4117-11	500		
1.5mL, small bulb	1.0mL	50	104mm	P4121-01	500	P4121-11	500		
5mL, extended tip	3.5mL	65	144mm	P4122-01	500	P4122-11	500		
7mL, large bulb	6.0mL	66	150mm	P4123-01	400	P4123-11	500		
4mL, short stem	3.5mL	22	83mm	P4132-00	250	P4132-11	500	P4132-14	500
4mL, long stem	3.5mL	28	150mm	P4133-00	500	P4133-11	500	P4133-14	500

# Inoculating Loops

- Sterile & disposable...no flaming
- Uniform streaking & inoculating
- Hexagonal grip - improves control
- Smooth loop surfaces - no gouging



These sterile disposable plastic loops and needles are designed for use in quantitative procedures such as sampling, urine counts, serial dilutions, and for bacterial inoculation. Presterilized and designed for single use, there is no risk of cross contamination and no need for flaming. They are flexible enough for streaking, yet rigid enough for subsurface inoculation. The loop surfaces are extremely smooth with no rough edges and no burrs on the loop head. This results in the elimination of cutting or gouging of the agar surface. Sterile, disposable and verifiably accurate, these loops provide a cost-effective alternative to traditional metallic loops.

Cat. No.	Description	Packaging	Diameter	Qty
M4015	Inoculating loops, 1µL, 200mm, flexible PP	20 per sterile zip bag	1.0mm	1000
M4025	Inoculating loops, 10µL, 200mm, flexible PP	20 per sterile zip bag	3.0mm	1000
M4030	Inoculating needles, 200mm, rigid ABS	20 per sterile zip bag	N/A	1000

# Microbiological Spreaders

- Spreads cultures & liquids evenly
- Smooth edges - minimizes gouging
- Ideal for bacterial CFU counts
- Presterilized - no flaming required



**L-shape** The traditional spreaders are used for spreading bacteriological cultures evenly. The shape allows the user to rotate and apply easily throughout an entire round plate or dish. They are made of ABS and have a slight upward curve at the edge to prevent dragging or scraping.

**T-shape** This shape ensures that consistently even pressure can be applied across the entire span of the 34mm spreading surface. Designed for spreading and dispersing liquids across the surface of agar culture plates, they are made of ABS and commonly used for CFU plate counts on water, milk, urine, etc.

**Triangle Shape** This new design is also used for CFU count applications, but has a grooved handle that improves grip and orientation. Made of polypropylene, they are available with a 30mm span or an extra large 60mm span.

Cat. No.	Description	Packaging	Qty
M5420	Spreaders, L-Shape, 38 x 156mm	1 per sterile peel, 500 peels	500
M5421	Spreaders, L-Shape, 38 x 156mm	10 per sterile peel, 50 peels	500
M5430	Spreaders, T-Shape, 34 x 140mm	1 per sterile peel, 500 peels	500
M5431	Spreaders, T-Shape, 34 x 140mm	10 per sterile peel, 50 peels	500
M5441	Spreaders, Triangle, 60 x 235mm	10 per sterile bag, 10 bags	100
M5451	Spreaders, Triangle, 30 x 2207mm	10 per sterile bag, 10 bags	100

# PolyPestle™ Dual-Sided Pestle

Conical side for 1.5mL microtubes

Convex side for cell strainers



- Double sided for increased usefulness
- Textured handle for secure grip
- Homogenize samples in 1.5mL tubes
- Sterile and individually wrapped

Cat. No.	Description	Qty
C4010	PolyPestle™ Dual Sided Pestle, for cell strainers and 1.5mL microtubes, sterile, individually wrapped	50

# Autoclave Bags

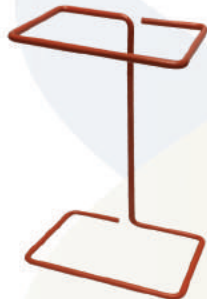
- Heavy gauge polypropylene
- Large white marking areas
- Strong seamless bottoms
- Printed biohazard symbols



These heavy gauge polypropylene autoclave bags are more puncture-resistant than polyethylene bags, but also withstand autoclaving at temperatures up to 136°C (250°F). Each bag has an oversized white marking panel, and are marked with the words "Hazardous Waste" and the standard "Biohazard" symbol, conforming to the OSHA standard (29CFR1910.1030). At 2.25mil thick, our bags are designed to resist stretching and poking, and also include seamless bottoms for exceptional strength.



A9004R



A9004-WR

Cat. No.	Description	Dimensions	Packaging	Qty
A9000C	Clear biohazard bag	12.2 x 26in.	4 packs of 50	200
A9000R	Red biohazard bag	12.2 x 26in.	4 packs of 50	200
A9002C	Clear biohazard bag	24 x 32in.	4 packs of 50	200
A9002R	Red biohazard bag	24 x 32in.	4 packs of 50	200
A9004R	Red biohazard bag	8.5 x 11in.	2 packs of 50	100
A9004-WR	Wire rack stand for 8.5 x 11in. bags, 5 x 3 x 9" (LxWxH)			1
A9004-SK	Benchttop Disposal Set, includes metal stand and 400 red 8.5 x 11" autoclave/ biohazard bags			1

## SureSeal™ Sterile Sampling Bags



- Leak-proof and airtight
- Perforated strip -guarantees sterility
- Gamma sterilized - no gas residue
- Twirl to seal
- Shielded tabs - no punctures



Pull tabs on both sides of bag for easy opening

SureSeal™ Bags are gamma sterilized, leaving a virgin interior surface with no toxic residue from gas exposure. Samples are easily collected by removing the tear strip above the wire closure and pulling on the two external grip tabs to open the mouth of the bag to the desired level. Using the grip tabs ensures sterility and eliminates the risk of contamination from finger contact. SureSeal™ Bags meet USDA, EPA and FDA standards and are sterile, RNase-free, DNase-free and non-pyrogenic.

Cat. No.	Description	Dimensions (HxW)	Thickness	Qty
B5750	Sterile Sampling Bags, 2oz	127 x 76mm	2.8 mil	500
B5760	Sterile Sampling Bags, 4oz	178 x 76mm	2.8 mil	500
B5761	Sterile Sampling Bags, 4oz, with marking spot	178 x 76mm	2.8 mil	500
B5770	Sterile Sampling Bags, 18oz	229 x 114mm	2.8 mil	500
B5771	Sterile Sampling Bags, 18oz, with marking spot	229 x 114mm	2.8 mil	500
B5780	Sterile Sampling Bags, 27oz	304 x 114mm	2.8 mil	500
B5790	Sterile Sampling Bags, 36oz	381 x 114mm	2.8 mil	500
B5910	Sterile Sampling Bags, 55oz	300 x 180mm	4.0 mil	250
B5911	Sterile Sampling Bags, 55oz, with marking spot	300 x 180mm	4.0 mil	250

- ▶ Precision Instruments
- ▶ High Quality Plastics
- ▶ Storage Solutions



MTC Bio Incorporated  
2600 Main Street Extension  
Sayreville, NJ 08872  
(908) 279-0280  
[www.mtcbio.com](http://www.mtcbio.com)  
[info@mtcbio.com](mailto:info@mtcbio.com)