

IFC203 Data Logger Interface Quick Installation Guide



Package Contents

IFC203

- IFC203 Cable
- Data Logger Software on USB Flash Drive
- Quick Installation Guide

Contact US

Website:

<http://www.madgetech.com>

E-mail Support:

support@madgetech.com

Phone:

(603) 456-2011

Fax:

(603) 456-2012

Address:

MadgeTech, Inc.
6 Warner Road, Warner, NH 03278



1 Install Software

- A Insert the MadgeTech Data Logger Software USB Flash Drive into an available USB port on your PC. Click the **Start** menu and choose **Computer or My Computer**. Browse to the Removable Disk drive corresponding to the USB port you selected.

For Windows 7 users, a dialog box may appear with a list of options. Select "Open Folder to View files". If you are not prompted, click the **Start** menu and choose **Computer or My Computer** and browse to the Removable Disk drive corresponding to the USB port you selected.



Once you locate the contents of the USB flash drive, click on **auto-run**.

A set-up screen will display with options as shown above.

- B Click on the **MadgeTech Software** link from the set-up screen to start the installation of the Data Logger Software. The **Install MadgeTech Software** window will appear, click on the **Install MadgeTech Software** link. Follow the on screen prompts to complete the installation. Click Back to MadgeTech Contents when completed. See the Software Manual or go online at www.madgetech.com for additional information.



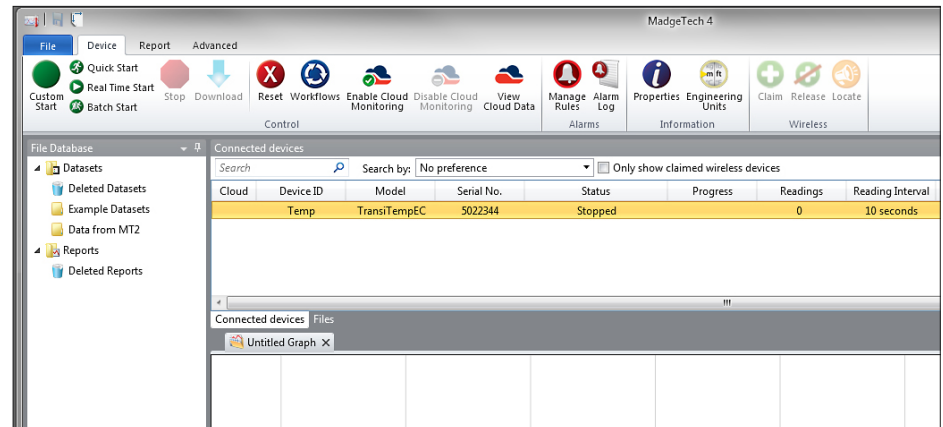
2 Connect USB Data Logger Interface

- A Connect the USB end of the IFC203 Interface to the corresponding port on your PC. The blue LED will illuminate when the device has plugged in an successfully recognized by the computer.

The installation of the USB data logger interface is now complete. Start the MadgeTech Data Logger Software. *(If necessary, see the software manual for additional information on the software)*

- B Start the MadgeTech Data Logger Software. *(If necessary, see the software manual for additional information on the software)*

- C Your device(s) will appear in the list displayed, select your device in this list and choose your desired start method. *(The red LED flashes when data is being sent and the green LED flashes when data is being received.)*



Additional Information

For additional information/troubleshooting assistance, refer to the User Guide on the Data Logger Software USB Flash Drive, e-mail support@madgetech.com or call (603) 456-2011.