

# TEMP1000IS

## INTRINSICALLY SAFE TEMPERATURE DATA LOGGER



### Features

- Intrinsically Safe
- Rugged
- Reusable
- Programmable Start Time
- Stainless Steel Enclosure
- User-friendly
- Low Cost
- CE Compliant

### Benefits

- Simple Setup and Installation
- Minimal Long-Term Maintenance
- Long-Term Field Deployment

### Applications

- EtO Sterilization
- Implement HACCP Programs
- Food Preparation and Processing
- Environmental Studies
- Well Monitoring
- Dishwasher Testing
- Hazardous and Hostile Environment Monitoring
- Medical and Pharmaceutical

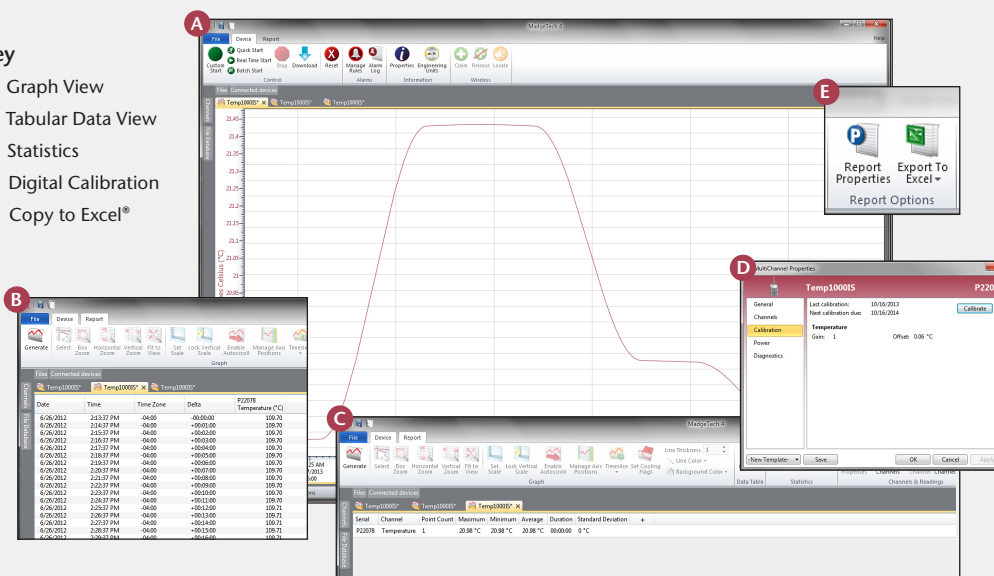
The Temp1000IS temperature logger is a rugged, battery powered, stand alone device which can be used to automatically record temperatures between  $-40^{\circ}\text{C}$  and  $80^{\circ}\text{C}$ . This all in one compact, portable, easy to use device is able to measure and record up to 32,767 temperature measurements. The Temp1000IS has been Factory Mutual certified as intrinsically safe for Class I, Division 1, groups A, B, C and D and non-incendive for Class I, Division 2, groups A, B, C and D hazardous environments. This certification makes the device ideal for uses such as EtO sterilization, environmental studies and numerous other hostile environment applications. Its real time clock ensures that all the data is time and date stamped. The storage medium is non-volatile solid state memory, providing maximum data security even if the battery becomes discharged. The device can be started and stopped directly from your computer and its small size allows it to fit almost anywhere. The Temp1000IS makes data retrieval quick and easy. Simply place the device into an IFC400 or an IFC406 series docking station and our user-friendly software does the rest.



## MADGETECH DATA LOGGER SOFTWARE

### Key

- A** Graph View
- B** Tabular Data View
- C** Statistics
- D** Digital Calibration
- E** Copy to Excel®



### Software Features:

- Multiple graph overlay
- Statistics
- Digital calibration
- Zoom in/ zoom out
- Lethality equations (FO, PU)
- Mean Kinetic Temperature
- Full time zone support
- Data annotation
- Min./Max./Average lines
- Data table view
- Automatic report generation
- Summary view
- Multilingual

# TEMP1000IS SPECIFICATIONS\*

\*SPECIFICATIONS ARE SUBJECT TO CHANGE WITHOUT NOTICE. SPECIFIC WARRANTY REMEDY LIMITATIONS APPLY. CALL 1-603-456-2011 OR GO TO WWW.MADGETECH.COM FOR DETAILS.

<b>Temperature Sensor:</b>	Resistance Temperature Detector (RTD)
<b>Temperature Range:</b>	-40 °C to +80 °C (-40 °F to +176 °F)
<b>Temperature Resolution:</b>	0.01 °C (0.018 °F)
<b>Calibrated Accuracy:</b>	±0.5 °C (0 to 50 °C) ±0.9 °F (32 °F to 122 °F)
<b>Memory:</b>	32,767 readings
<b>Start Modes:</b>	Software programmable immediate start or delay start, up to 2 years in advance
<b>Real Time Recording:</b>	May be used with PC to monitor and record data in real time (PC interface not IS rated)
<b>Reading Rate:</b>	1 reading every 2 seconds up to 1 reading every 12 hours
<b>Lethality Equations:</b>	Sterilization Units and Pasteurization Units are available in software with the click of a button.
<b>Calibration:</b>	Digital calibration through software
<b>Calibration Date:</b>	Automatically recorded within device

<b>Battery Type:</b>	3.6V lithium battery included, <b>user replaceable</b>
<b>Battery Life:</b>	2 years typical at 15 minute reading rate
<b>Data Format:</b>	Date and time stamped °C, °F, K, °R
<b>Time Accuracy:</b>	±1 minute/month at 20 °C
<b>Required Interface Package:</b>	IFC400 or IFC406
<b>Operating System Compatibility:</b>	XP SP3/Vista/Windows 7/Windows 8/Windows 10
<b>MadgeTech Software Compatibility:</b>	<ul style="list-style-type: none"> <li>Standard Software version 4.1.0.2 or later</li> <li>Secure Software version 4.1.3.0 or later</li> </ul>
<b>Operating Environment:</b>	-40 °C to +80 °C, 0 %RH to 95 %RH (case properly sealed)
<b>Dimensions:</b>	2.65 in x .97 in dia. (67.3 mm x 24.6 mm dia.)
<b>Weight:</b>	3 oz (85 g)
<b>Materials:</b>	316 Stainless Steel
<b>IP Rating:</b>	Not Rated - <b>Caution:</b> Do not submerge this product to retain IS rating
<b>Approvals:</b>	IS, CE

**BATTERY WARNING:** FIRE, EXPLOSION, AND SEVERE BURN HAZARD. DO NOT SHORT CIRCUIT, CHARGE, FORCE OVER DISCHARGE, CRUSH, PENETRATE, OR INCINERATE. BATTERY MAY LEAK OR EXPLODE IF HEATED ABOVE 80 °C (176 °F).

## ORDERING INFORMATION

MODEL	DESCRIPTION	PRICE (U.S.)
TEMP1000IS	Intrinsically Safe Temperature Data Logger (Calibration certificate included)	\$239.00
IFC400	USB interface cable package with docking station.	\$120.00
IFC406	6 Port, Multiplexer docking station with USB cable, software and manual	\$549.00
TL-2150/S	Replacement battery for Temp1000IS	\$10.00
SVP-Secure License	License for MadgeTech SVP-Secure Software (unlimited users, license per computer)	\$1,400.00 Multi license discount available

**ASK ABOUT OUR OTHER DATA LOGGERS**

- Temperature
- Humidity
- Pressure
- pH Level
- Shock
- LCD Display
- Pulse/Event/State
- Current
- Voltage
- Wireless
- Intrinsically Safe
- Spectral Vibration
- Motion

For Quantity Discounts call 603-456-2011 or email [sales@madgetech.com](mailto:sales@madgetech.com)