

Autonics ANALOG TIMER

ATS8W/ATS11W SERIES

MANUAL

Thank you very much for selecting Autonics products.
For your safety, please read the following before using.

Caution for your safety

*Please keep these instructions and review them before using this unit.

*Please observe the cautions that follow:

Warning Serious injury may result if instructions are not followed.

Caution Product may be damaged, or injury may result if instructions are not followed.

*The following is an explanation of the symbols used in the operation manual.

Warning Injury or danger may occur under special conditions.

Warning

- In case of using this unit with machineries(Nuclear power control, medical equipment, vehicle, train, airplane, combustion apparatus, entertainment or safety device etc), it is required to install fail-safe device, or contact us. It may cause a fire, human injury or property loss.
- Install the unit on a panel. It may give an electric shock.
- Do not connect, inspect or repair when power is on. It may give an electric shock.
- Do not disassemble the case. Please contact us if it is required. It may cause an electric shock or a fire.

Caution

- This unit shall not be used outdoors. It might shorten the life cycle of the product or give an electric shock.
- Please observe the rated specifications. It might shorten the life cycle of the product and cause a fire.
- Do not use beyond of the rated switching capacity of Relay contact. It may cause insulation failure, contact melt, contact failure, relay broken and fire etc.
- In cleaning unit, do not use water or an oil-based detergent and use dry towels. It may cause an electric shock or a fire.
- Do not use this unit in place where there are flammable or explosive gas, humidity, direct ray of the light, radiant heat, vibration and impact etc. It may cause a fire or an explosion.
- Do not inflow dust or wire dregs into the unit. It may cause a fire or a malfunction.

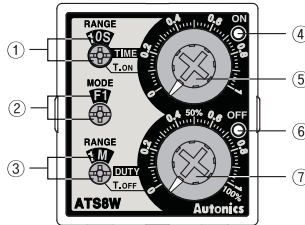
Ordering information

ATS 8 W - 4 1

1	Time range 1 (0.1 ~ 1)
3	Time range 3 (0.3 ~ 3)
1	12VDC
2	24VAC / 24VDC
4	100~240VAC / 24~240VDC
W	Twin (Flicker) mode
8	8 Pin socket type(PG-08, PS-08, PS-M8)
11	11 Pin socket type(PG-11, PS-11)
ATS	Series name : Small analog timer

*8 Pin socket(PG-08, PS-08, PS-M8, PG-11, PS-11) : Sold separately

Front panel identification



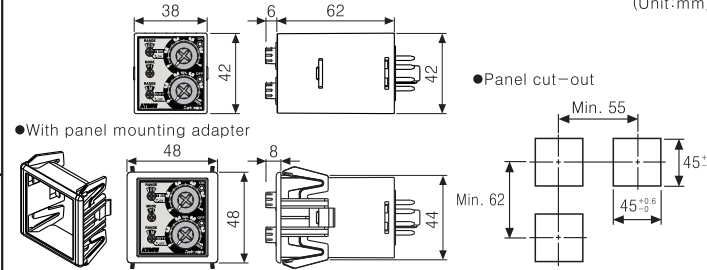
- ON time / cycle range setting part
- Output mode setting part
- OFF time range setting part
- ON operation indication LED (Red)
- ON time / cycle setting dial
- OFF operation indication LED (Green)
- OFF time / ON Duty (%) setting dial

*The above specifications are subject to change and some models may be discontinued without notice.

Time specifications

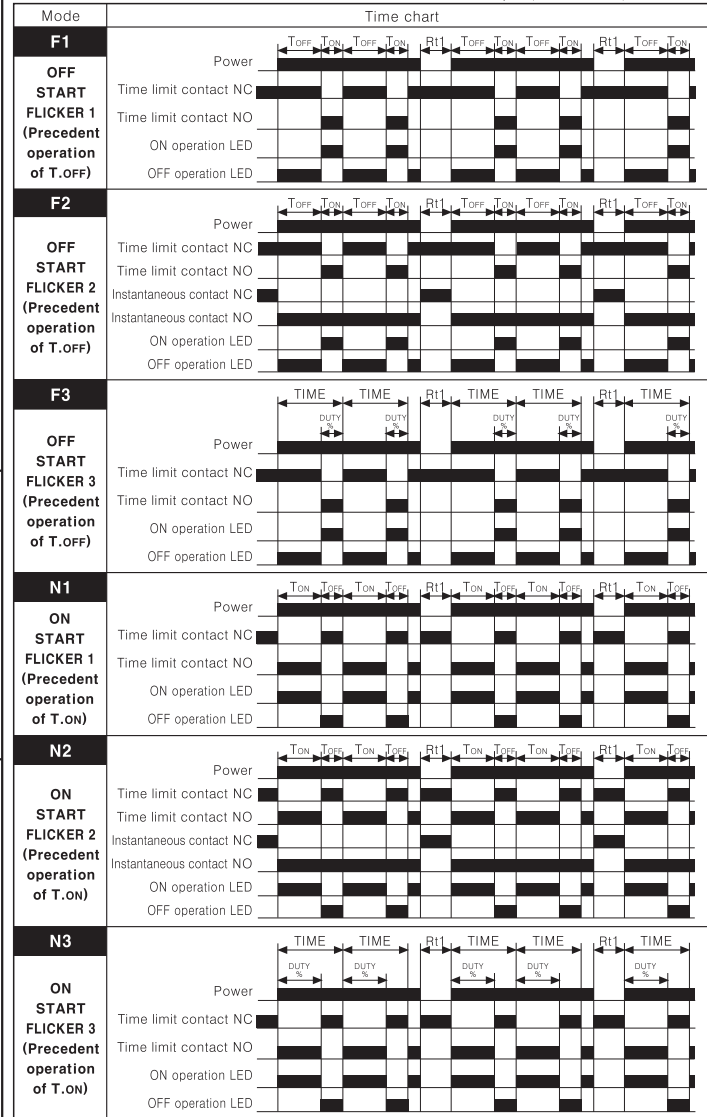
Model	Time range	Time setting range
ATS8W-□1 ATS11W-□1	1S	0.1 sec ~ 1 sec
	10S	1 sec ~ 10 sec
	1M	0.1 min ~ 1 min
	10M	1 min ~ 10 min
ATS8W-□3 ATS11W-□3	1H	0.1 hour ~ 1 hour
	10H	1 hour ~ 10 hour
	1S	0.3 sec ~ 3 sec
	10S	3 sec ~ 30 sec
	1M	0.3 min ~ 3 min
	10M	3 min ~ 30 min
	1H	0.3 hour ~ 3 hour
	10H	3 hour ~ 30 hour

Dimensions



Output operation mode

[T_{ON} : ON Setting time, T_{OFF} : OFF Setting time, TIME : Cycle, DUTY : ON Time duty rate, Rt : Return time, Rt1Rt]



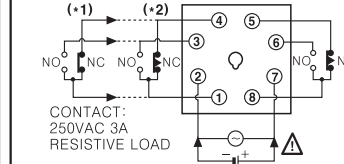
*If the time is set too short, the output may not work properly due to contact output response time. Please set the time at least over 100ms.

Specifications

Model		ATS8W-□1 / ATS11W-□1	ATS8W-□3 / ATS11W-□3
Control time setting range		0.1sec ~ 10hour	0.3sec ~ 30hour
Power supply		• 100~240VAC 50/60Hz, 24~240VDC (Universal) • 24VAC 50/60Hz, 24VDC (Universal)	• 12VDC
Allowable voltage range		90 to 110% of rated voltage	
Power consumption		• 100~240VAC : 4.2VA, 24~240VDC : 2W • 24VAC : 4.5VA, 24VDC : 2W	• 12VDC : 1.5W
Return time		Max. 100ms	
Control output	Contact	Time limit DPDT (2c) or Instantaneous SPDT (1c)+Time limit SPDT (1c) selectable according to output operation mode	
	Type	Capacity	
Relay		Mechanical	
life cycle		Electrical	
Repeat error		Max. ±0.2% ±10ms	
Setting error		Max. ±5% ±50ms	
Voltage error		Max. ±0.5%	
Temperature error		Max. ±2%	
Insulation resistance		100MΩ (at 500VDC)	
Dielectric strength		2000VAC 50/60Hz for 1 minute	
Ambient temperature		-10 ~ 55°C (at non-freezing status)	
Storage temperature		-25 ~ 65°C (at non-freezing status)	
Ambient humidity		35 ~ 85%RH	
Approval		CE, UL, IEC	
Unit weight		Approx. 72g	

Connections

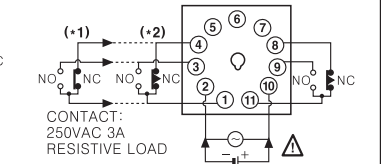
ATS8W SERIES



CONTACT: 250VAC 3A RESISTIVE LOAD

SOURCE:
• 100~240VAC 50/60Hz, 24~240VDC
• 24VAC 50/60Hz, 24VDC
• 12VDC

ATS11W SERIES



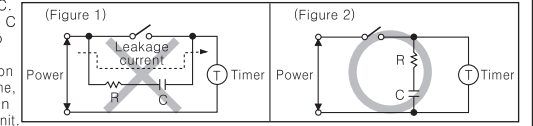
CONTACT: 250VAC 3A RESISTIVE LOAD

SOURCE:
• 100~240VAC 50/60Hz, 24~240VDC
• 24VAC 50/60Hz, 24VDC
• 12VDC

* (•1) [F2], [N2] output operation mode * (•2) [F1], [F3], [N1], [N3] output operation mode

Caution for using

- Please connect DC power input after checking polarity of power.
- In case of 12VDC/24VAC/24VDC model, isolated and limited voltage/current or Class 2 sources should be provided for power supply.
- F3 / N3 mode is for cycle(TIME) and On Duty (%) setting in flicker mode. ON time range is changed to cycle(TIME) range, and OFF time range is not used.
- When supply the power to the Timer, connection shown in Figure 1 might cause malfunction due to leakage current through R and C. Please connect R and C as shown in Figure 2 to prevent malfunction.
- It might cause malfunction if changing the setting time, time range or operation mode during operating unit.



Please change the setting time, time range or operation mode after cut the power off.

- Do not use this unit at below places.
 - Place where there are severe vibration or impact.
 - Place where strong alkalis or acids are used.
 - Place where there are direct ray of the sun
 - Place where strong magnetic field or electric noise are generated.
- Installation environment
 - It shall be used indoor
 - Altitude Max. 2000m
 - Pollution Degree 2
 - Installation Category II

*It may cause malfunction if above instructions are not followed.

Major products

- Photoelectric sensors
- Fiber optic sensors
- Door sensors
- Door side sensors
- Area sensors
- Proximity sensors
- Rotary encoders
- Connector/sockets
- Switching mode power supplies
- Control switches/Lamps/Buzzers
- I/O Terminal Blocks & Cables
- Stepper motors/drivers/motion controllers
- Graphic/Logic panels
- Field network devices
- Laser marking system(Fiber, CO₂, Nd:YAG)
- Laser welding/soldering system
- Temperature controllers
- Temperature/Humidity transducers
- SSR/Power controllers
- Counters
- Timers
- Panel meters
- Tachometer/Pulse(Rate)meters
- Display units
- Sensor controllers

Autonics Corporation
http://www.autonics.com

Satisfiable Partner For Factory Automation

HEAD QUARTERS:
18, Bansong-ro 513beon-gil, Haundae-gu, Busan, Korea

OVERSEAS SALES:
#402-404, Bucheon Techno Park, 655, Pyeongcheon-ro, Wonnji-gu, Bucheon, Gyeonggi-do, Korea

TEL: 82-32-610-2730 / FAX: 82-32-329-0728

E-mail: sales@autonics.com

EP-KE-02-052A