

PROHEAT® A-SERIES HEAT GUNS

THE NEXT GENERATION OF HEATING PERFORMANCE



- New Trigger Switch Control System (Switch, Safety & Lock)
- Industry Leading Field Repairability
- New Easy-to-Replace Plug-in Element
- New Easy-to-Replace Cordset
- New Easy Connect Nozzle Covers
- Improved Motor Life 1000+ hrs.

3 MODELS TO CHOOSE FROM

PH-1100A



Low/Medium/High Settings

PH-1200A



6 Temp and 4 Airflow Settings

PH-1400A



LCD Fully Programmable

Electric Heat Guns

Proheat® PH-1100A Quick-Touch™ 3-Temp Heat Gun & Kit



PH A-Series
PH-1100A 3-Temp Heat Gun



3 Temperature and Airflow Settings (Low, Medium & High)

Low = 9 CFM & No Heat
 Medium = 9 CFM & 600°F (320°C)
 High = 18 CFM & 1200°F (650°C)



Quality attachments for professional applications

PH-1100A-00-K

Proheat 3-Temp heat gun with rugged storage case and 2 attachments (35016 & 35017)



Proheat® PH-1100A Quick-Touch™ 3-Temp Heat Gun & Kit

Model No.	Air Temp	Air Volume				
PH-1100A	No Heat, 600°F, 1200°F	9 & 18 CFM	120V	50/60 Hz	13A	1560W
PH-1100A-00-K	PH-1100A Heat Gun with storage case and 2 attachments (35016 & 35017)					

Specifications

- **Motor:** Permanent Magnet
- **Nozzle Opening:** .88" I.D., 1.31" O.D.
- **Cordset:** 6', 2 Prong - Double Insulated
- **Dimensions:** 9.25" L x 3.43" W x 8.2" H
- 120V Models
- **Momentary Contact Switch**
- **Tool Net Weight:** 1.9 lbs.
- **Shipping Weight Tool:** 3 lbs.
- **Shipping Weight Kit:** 10 lbs.

NOTE: Users should independently evaluate the suitability of the product for their application.

Proheat PH-1100A Highlights

- Compact, lightweight, easy-to-use
- Trigger switch with trigger lock allows switch to be both momentary contact or locked in the on position
- Easy to replace plug-in element; takes just seconds to switch elements
- Easy to replace cordset; swap cord lengths in no time
- Easy connect nozzle covers; switch from traditional cover to a nozzle spacer quickly
- Base provides built-in stand for hands-free use
- Hanging loop located on top of heat gun
- Improved motor life; lab tested for 1000+ hrs
- Easy to repair; field repairable plug-in element, cord and user interface
- Make your Proheat even more versatile. See our wide variety of professional quality attachments and accessories (pages 13-14).

Electric Heat Guns

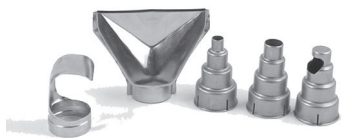
Proheat® Varitemp® PH-1200A Heat Gun & Kit



PH A-Series
PH-1200A Varitemp® Heat Gun



6 Temperature and 4 Airflow Settings
Heat Settings: Ambient to 1200°F
Airflow Settings: 4-18 CFM



Quality attachments for professional applications


PH-1200A-00-K
Proheat Varitemp PH-1200A Heat Gun with rugged storage case and 5 specialty attachments



Proheat® Varitemp® PH-1200A Heat Gun & Kit

Model No.	Air Temp	Air Volume				
PH-1200A	Ambient to 1200°F	4-18 CFM	120V	50/60 Hz	13A	1560W
PH-1200A-00-K	Proheat Varitemp PH-1200A Heat Gun with rugged storage case and 5 specialty attachments					
PH-1200A-00-SS	PH-1200A Heat Gun with bench stand (35678) and specialty connector (35292)					

Specifications

- **Motor:** Permanent Magnet
- **Nozzle Opening:** .88" I.D., 1.31" O.D.
- **Cordset:** 6', 2 Prong - Double Insulated
- **Dimensions:** 9.25" L x 3.43" W x 8.2" H
- 120V Models
- **Momentary Contact Switch** 
- **Tool Net Weight:** 1.9 lbs.
- **Shipping Weight Tool:** 3 lbs.
- **Shipping Weight Kit:** 10 lbs.

NOTE: Users should independently evaluate the suitability of the product for their application.

Proheat PH-1200A Highlights

- Compact, lightweight, easy-to-use
- Variable temperature and variable airflow: 6 different temperature settings and 4 different airflow settings
- Trigger switch with trigger lock allows switch to be both momentary contact or locked in the on position
- Easy to replace plug-in element; takes just seconds to switch elements
- Easy to replace cordset; swap cord lengths in no time
- Easy connect nozzle covers; switch from traditional cover to a nozzle spacer quickly
- Base provides built-in stand for hands-free use
- Hanging loop located on top of heat gun
- Improved motor life; lab tested for 1000+ hrs
- Easy to repair; field repairable plug-in element, cord and user interface
- Make your Proheat even more versatile. See our wide variety of professional quality attachments and accessories (pages 13-14).

Electric Heat Guns

Proheat® PH-1400A Programmable LCD Heat Gun & Kit



PH A-Series
PH-1400A Programmable LCD Heat Gun



Quality attachments for professional applications

PH-1400-00-K
Proheat LCD Programmable Heat Gun with rugged storage case and 5 specialty attachments




Programmable Backlit LCD Display
Variable Temperature in 10°F increments (5°C)
9 Airflow Settings 4-18 CFM
4 Preset Programs
Selectable Auto Cooldown Feature
Supervisor Locking Feature

Proheat® PH-1400A Programmable LCD Heat Gun & Kit

Model No.	Air Temp	Air Volume				
PH-1400A	Ambient to 1200°F	4-18 CFM	120V	50/60 Hz	13A	1560W
PH-1400A-00-K	PH-1400A Heat Gun with rugged storage case and 5 specialty attachments					

Specifications

- **Motor:** Permanent Magnet
- **Nozzle Opening:** .88" I.D., 1.31" O.D.
- **Cordset:** 6', 2 Prong - Double Insulated
- **Dimensions:** 9.25" L x 3.43" W x 8.2" H
- 120V Models
- **Momentary Contact Switch** 
- **Tool Net Weight:** 1.9 lbs.
- **Shipping Weight Tool:** 3 lbs.
- **Shipping Weight Kit:** 10 lbs.

NOTE: Users should independently evaluate the suitability of the product for their application.

Proheat PH-1400A Highlights

- Compact, lightweight, easy-to-use
- Programmable backlit LCD display of temperature and airflow settings
- Variable temperature in 10°F increments, display in Fahrenheit or Celsius
- Selectable auto cooldown feature
- Supervisor locking feature: lock temp and airflow settings with a code
- Trigger switch with trigger lock allows switch to be both momentary contact or locked in the on position
- Easy to replace plug in element; takes just seconds to switch elements
- Easy to replace cordset; swap cord lengths in no time
- Base provides built-in stand for hands-free use
- Improved motor life; lab tested for 1000+ hrs
- Easy to repair; field repairable plug-in element, cord and user interface
- Make your Proheat even more versatile. See our wide variety of professional quality attachments and accessories (**pages 13-14**).

Proheat® Heat Gun Attachments & Accessories

Proheat A-Series 35677 Nozzle Guard

The Proheat A-Series Nozzle Guard attaches to any of the Proheat A-Series Heat Gun models. Extending ½ inch beyond the heat gun nozzle, the guard and base give the user complete protection from the heat gun's nozzle. It also comes with a 1-inch spacer that can be attached to the nozzle guard base, giving the user a total of 1½ inches of protection beyond the heat gun nozzle if desired.



Nozzle guard without spacer attached



Nozzle guard with 1-inch spacer attached



Proheat A-Series 35669 Dust Filter

The Proheat A-Series Dust Filter is designed to limit the amount of air dust that enters the heat gun while in use, keeping the heat gun operating smoothly and its internal parts clear of buildup. This dust filter is great in environments like paint booths, construction sites, and other less-ventilated facilities where an abnormal amount of particles are in the air.



Electric Heat Guns

Proheat® Heat Gun Attachments & Accessories

Professional quality attachments and accessories add versatility to your Proheat Heat Guns. Direct, concentrate or reflect heat to allow more versatile and precise applications for your heat tool.

Reducer Attachments



35294
3/8" (9mm) Reducer
 Concentrates air flow.
 Also used with weld tips



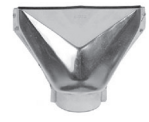
35293
5/8" (14mm) Reducer
 Provides concentrated air flow



35270
3/4" (20mm) Reduction Nozzle
 Concentrated air flow



35260
2" (50mm) Spreader Nozzle
 Spreads air evenly over wide area



35016
3" (75mm) Spreader
 Spreads air evenly over wide area

Reflector Attachments



35272
3/8" (9mm) Reflector, Shrink Attachment
 For shrinking small diameter tubing
 Use with PN35294 3/8" Reducer



35264
3/8" (9mm) Reflector, Shrink Attachment
 For shrinking small diameter tubing



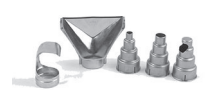
35292
5/8" (14mm) Special Connector
 Use to terminate shrink, solder & crimp connectors



35261
3" (75mm) Large Reflector
 For shrinking large diameter tubing



35017
1 1/4" Shrink Attachment
 Reflects air around surfaces such as tubing or pipe



35309
Attachment Kit
 Kit of 5 most popular attachments

Deflector Attachments



35262
2" (50mm) Window Nozzle Deflector
 Deflects heat away from windows



35263
3" (75mm) Window Nozzle Deflector
 Deflects heat away from windows



35678
Bench Stand
 To position guns for various applications



35291
Seam Roller with ball bearings
 For lap welding, edging tape and roofing applications



35677
Nozzle Guard
 To protect hands and surface from hot nozzle tip



35351
Storage Case
 Transport and store in a rugged plastic case

Accessories

Welding Attachments



35295
Plastic Welding Rod Nozzle w/ 7mm intake
 For use with welding rod, use with 3/8" reducer



35271
Tacking Tip
 For tacking parts together prior to welding so they will not move, use with 3/8" reducer



35296
3/4" (20mm) Lap Welding Nozzle
 For lap welding plastic materials, use with 3/8" reducer



35266
1 1/2" 40mm Angle Slit Nozzle
 Lap welds roofing materials



35267
3" (75mm) Teflon Coated Butt Welding Heat Disc
 For butt welding PVC pipes

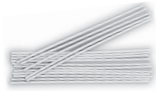


35268
1 1/2" (40mm) Lap Welding Slit Nozzle
 For lap welding PVC Sheeting

Welding Rods (Pkg. of 16) Round, 1/8" Dia. x 9" Long



35297
ABS Welding Rod
 Acrylonitrile Butadiene Styrene, Natural, for welding ABS plastics



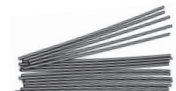
35298
PP Welding Rod
 Polypropylene, Natural, for welding PP plastics



35299
PVC Welding Rod
 Polyvinyl Chloride, Grey, for welding PVC plastics



35300
LDPE Welding Rod
 Low Density Polyethylene, Natural, for welding LDPE plastics



35301
HDPE Welding Rod
 High Density Polyethylene, for welding HDPE plastics

Electric Heat Guns

Proheat® Heat Gun Attachment Compatibility

Professional quality stainless steel attachments add versatility to your Proheat.

Reduce, concentrate, pinpoint, spread, reflect or weld — attachments enable the precise application of heat to your job. These Attachments & Tips can be used on the following Models:

Model No.	Description	PH-1100A	PH-1200A	PH-1400A
Reducer & Spreader Attachments				
35294	3/8" (9MM) Reducer	•	•	•
35293	5/8" (14mm) Reducer	•	•	•
35270	3/4" (20mm) Reducer	•	•	•
35260	2" (50mm) Spreader	•	•	•
35016	3" (75mm) Spreader	•	•	•
Reflector Attachments				
35272	3/8" (9MM) Reflector	•	•	•
35264	3/8" (9MM) Reflector w/ Reducer	•	•	•
35292	5/8" (14mm) Specialty Connector	•	•	•
35261	3" (75mm) Large Reflector	•	•	•
35017	1 1/4" Shrink	•	•	•
Attachment Kit				
35309	Attachment Kit - 5 Items	•	•	•
Deflector Attachments				
35262	2" (50mm) Window Glass Deflector	•	•	•
35263	3" (75mm) Window Glass Deflector	•	•	•
Welding Tips				
35295	7mm Rod, Speed Welding Tip	•	•	•
35271	Tacking Tip	•	•	•
35296	3/4" (20mm) Lap Welding	•	•	•
35266	1 1/2" (40mm) Angle Slit Attach.	•	•	•
35267	3" (75mm) Teflon Butt Weld Disk	•	•	•
35268	1 1/2" (40mm) Lap Welding Tip	•	•	•

Proheat® A-Series Plastic Welding Kit



Each Welding Kit Includes:

Heavy Duty Storage & Carrying Case

Safely and conveniently stores kit contents



Tack Welding Tip (35271)

For tack welding two pieces together before adding filler rod. Use with 3/8" reducer.



Speed Welding Tip w/ 7mm intake (35295)

For welding rod up to 6mm. Use with 3/8" reducer.



Welding Shoe (35269)

For softening and spreading plastics and embedding mesh screen. Use with 3/8" reducer.



3/8" (9mm) Reducer (35294)

Concentrates air flow. Also used with weld tips and freehand "pendulum" welding.



5/8" (14mm) Reducer (35293)

Concentrates air flow



1/4" Shrink Attachment (35017)

Reflects air around surfaces such as tubing or pipe



Wire Mesh Screen, Stainless (50190)

For reinforcing weld repairs. Size: 4" x 3". Qty 4 per pack.



ABS Welding Rod (35297)

Round, 1/8" Dia. x 9" Long, Natural, for welding ABS plastics (Qty 6)

PP Welding Rod (35298)

Round, 1/8" Dia. x 9" Long, Natural, for welding Polypropylene plastics (Qty 6)

PVC Welding Rod (35299)

Round, 1/8" Dia. x 9" Long, Grey, for welding PVC plastics (Qty 6)

LDPE Welding Rod (35300)

Round, 1/8" Dia. x 9" Long, Natural, for welding LDPE plastics (Qty 6)

HDPE Welding Rod (35301)

Round, 1/8" Dia. x 9" Long, Black, for welding HDPE plastics (Qty 6)

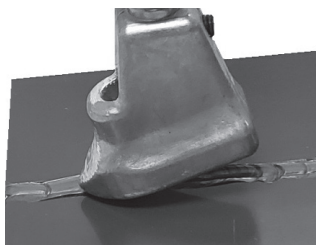
Fiber-Flex Hot Melt Adhesive Rod (35697)

Round, 3/16" Dia. x 12" Long, Black, "Universal" rod, works best with PP and TPO plastics. (Qty 6)

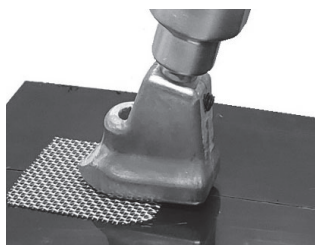
NOTE: Users should independently evaluate the suitability of the product for their application.

Proheat® A-Series Welding Kits

Model No.	Description
PH-1200A-00-WK	PH-1200A Heat Gun w/Welding Kit
PH-1400A-00-WK	PH-1400A Heat Gun w/Welding Kit



Welding Shoe



Welding Shoe with Mesh Screen



Speed Welding



Hand-held Heat Gun