

# FC Manager Instructions

---

## Overview of the dashboard window

### Overview

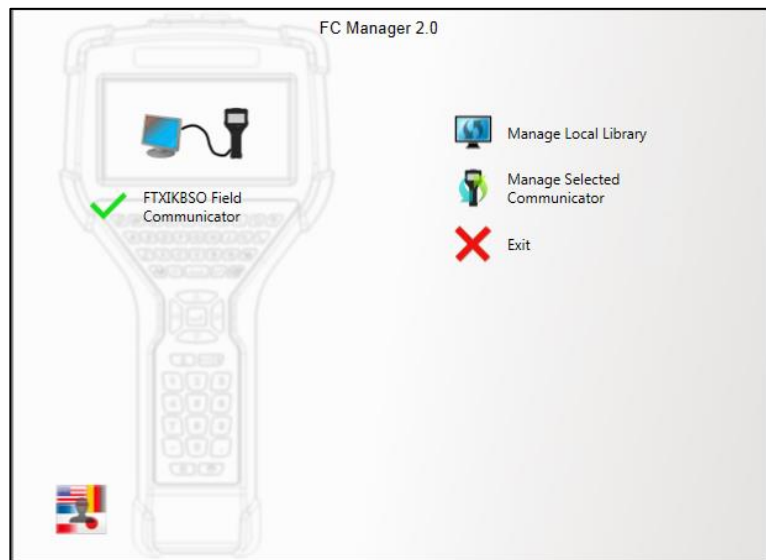
---

This guide leads you through menus (options) available in FC Manager to help you navigate the program.

### Opening FC Manager 2.x

---

After opening **FC Manager** on your computer, this dashboard window appears with one device connected to the computer.



### Six areas in the dashboard window

---

In the dashboard window, you can:

1. View the status of connected devices,
2. Select a specific communicator (if there are more than one),
3. Change the language for FC Manager,
4. **Manage Local Library**
5. **Manage Selected Communicator**
6. **Exit** (FC Manager)

## View the status of connected devices

### One (1) device connected

---

The screen shot below of **FC Manager** indicates that a device is connected to the computer. The name of the device is listed below.



### Three (3) devices connected

---

This example displays three (3) devices connected to the computer. The second device is the selected device.



**Note:** FC Manager only displays *five* devices in this window.

## View the status of a disconnected device

### Disconnected

The screen shot below of **FC Manager** indicates the computer is not connected to a device.



## Switching languages and Exit

### Switching to another language

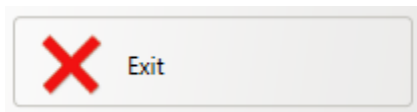
You may use this button to switch to another language on FC Manager. This button does not affect the language on the communicator.



**Important:** If you click this button to view it, you **must** select a language or this menu remains open as the top-most window when you switch to other programs in Windows.

### Exit button

The Exit button closes the FC Manager program.



## The Manage Local Library option

### Overview of Manage Local Library

#### Explaining the phrase Local Library

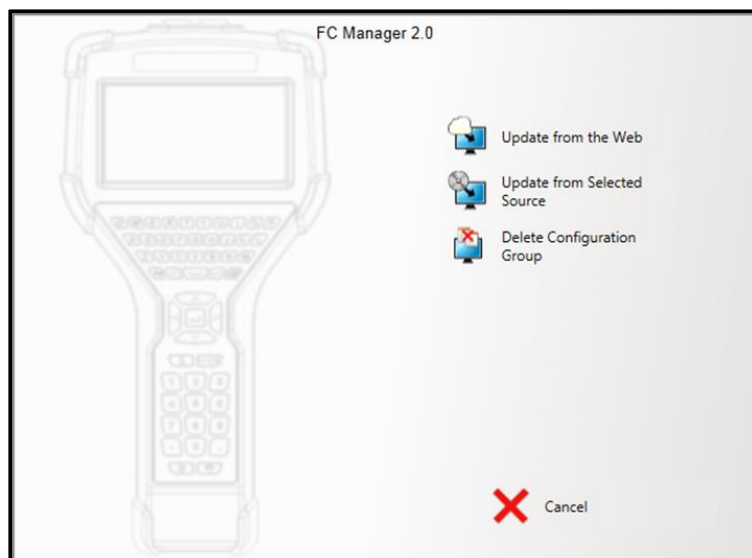
A local library is a location on your computer that collects:

- Configuration files,
- DD files, and
- System software files.

#### Four options

Clicking **Manage Local Library** displays these four (4) options:

- Update from the Web.
- Updated from Selected Source.
- Delete Configuration Group.
- Cancel.

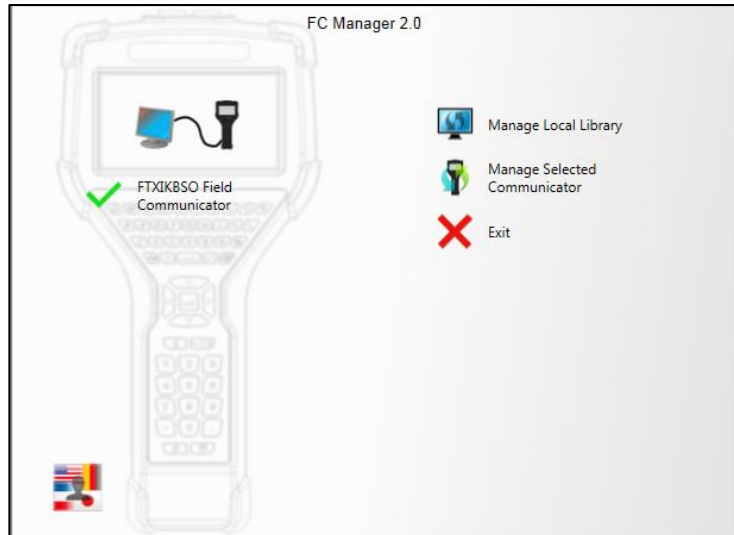


## Is your Local Library up-to-date?

### **Manage Local Library—Up-to-date**

---

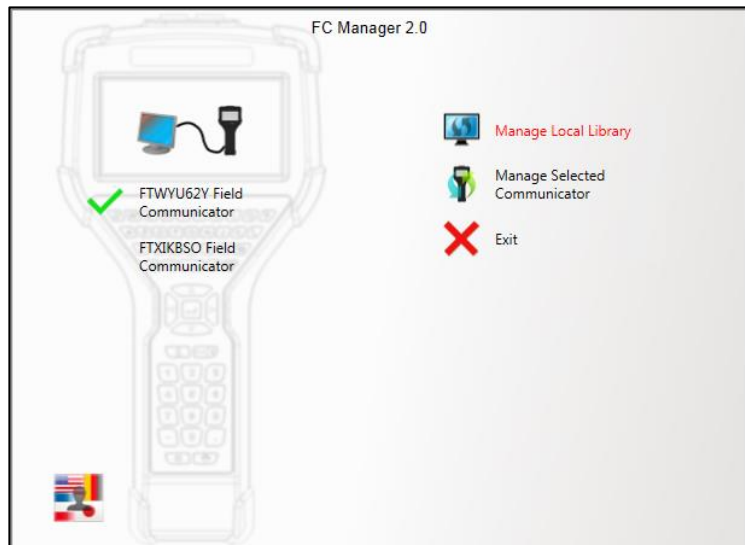
The phrase **Manage Local Library** appears black to indicate all of your DD files and system files are up-to-date with the website.



### **Manage Local Library—out-of-date**

---

The phrase **Manage Local Library** turns red to indicate you are out-of-date with the files on the website or FC Manager could not connect to the website.



## Update from the Web

### For those who can download files from the Internet

This option helps internet users keep up-to-date with the latest DD and systems files for the 5150.

### What color are the words *Manage Local Library*?

You may click **Update from the Web** if it is red or black.

If these words are...	Then...
Red	Click <b>Update from the Web</b> to download the latest files.
Black	You do not need to click this option. FC Manager automatically checks for you and alerts you in the dashboard window. Your Library is up-to-date.

## Update from Selected Source

### For those who can't download files from the internet

This option gives you the choice of selecting USB drives, CD/DVDs, or network drives.

### If you need new DD files and system files

Contact your local distributor for media options.

## Delete Configuration Group and Cancel

### Delete Configuration Group

This removes unwanted configuration groups from your computer.

### Cancel

Click **Cancel** to return to the preceding menu.

## The Manage Selected Communicator option

### Select a communicator

#### Select a communicator

---

Select one of the connected communicators and click **Manage Selected Communicator** to view five (5) options. See the screen shot below for an example of a selected device.



**Note:** A communicator is always selected unless there is no connection.

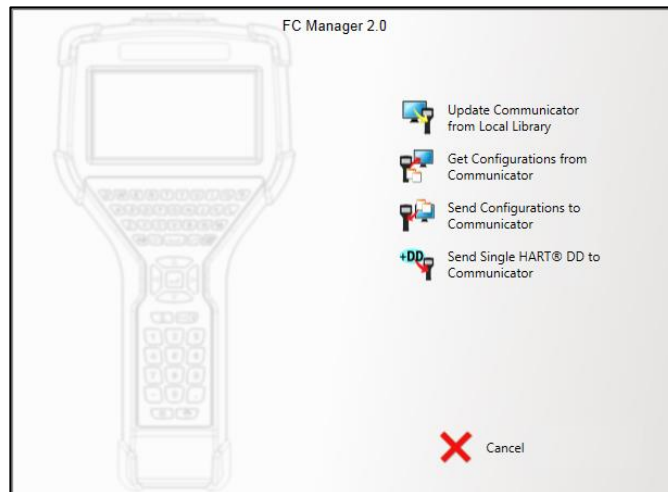
## Overview of options

### Five options

---

In the screen shot below, you can see the five (5) options available to you after you've selected a communicator and selected **Manage Selected Communicator**:

1. Update Communicator from Local Library.
2. Get Configurations from Communicator.
3. Send Configurations to Communicator.
4. Send Single HART® DD to Communicator.
5. Cancel.

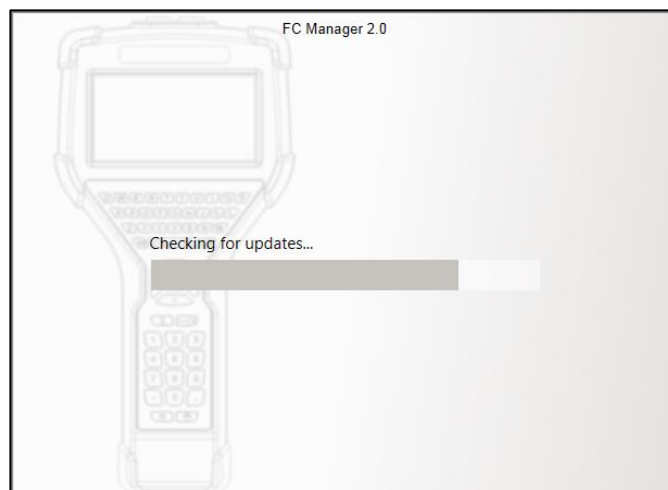


## Updating from Local Library

### Update Communicator from Local Library

---

This option compares HART® DD files and system software in the local library on your computer with the communicator. It then gives you the option to update either file type, or both.

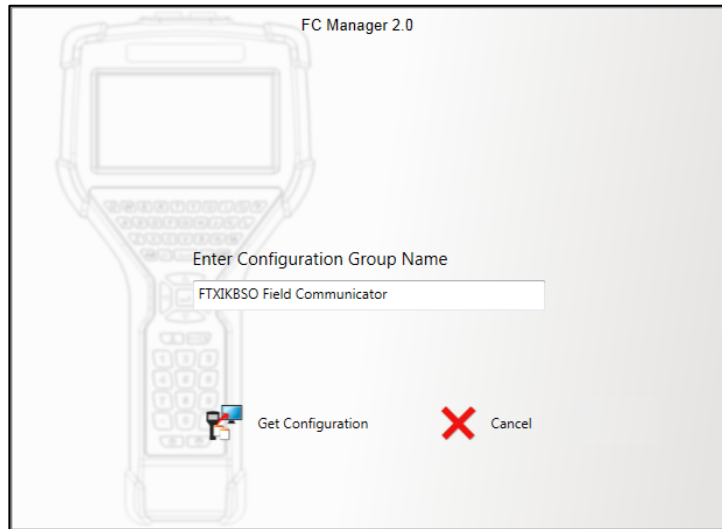




## Get configurations from your communicator

### Get Configurations from Communicator

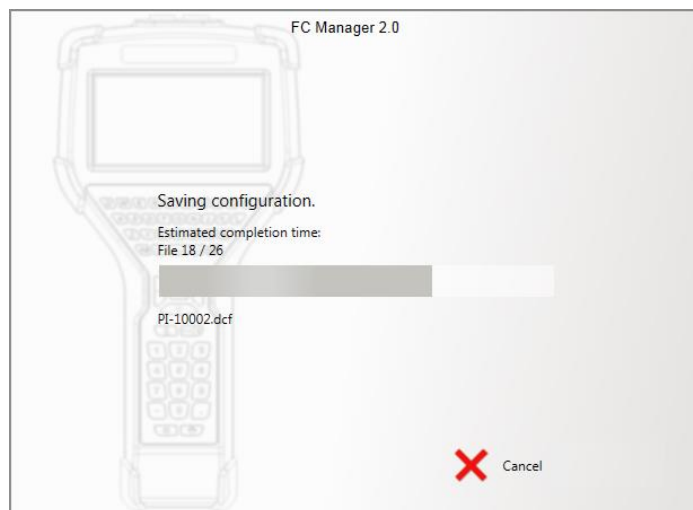
You created these configurations on the selected communicator. This option retrieves all configurations from the communicator to the local library on your computer.



**Note:** The default name in the **Enter Configuration Group Name** field is the name of the selected communicator. You can rename it.

### Get configuration

After clicking the **Get Configuration** option, FC Manager begins saving the selected configuration to your computer.

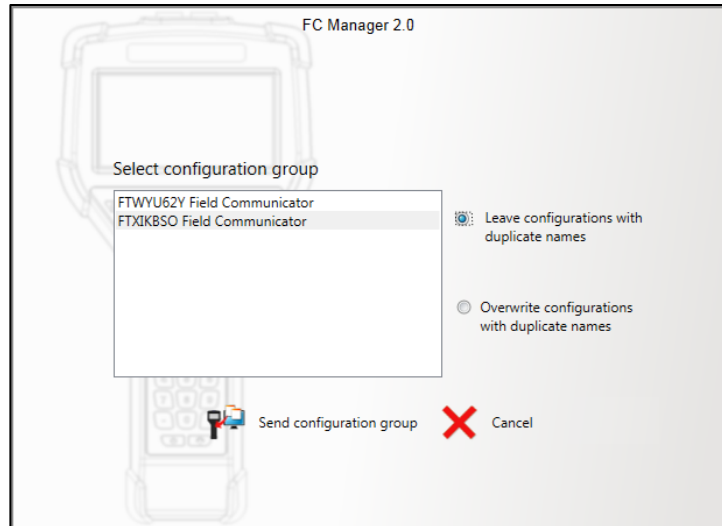


## Send configurations or HART DD file

### Send Configurations to Communicator

---

You can send a group of configurations from your computer to any selected communicator.



### Options for sending configurations

---

After you select a configuration group on the left side, then you need to select one of two options on the right side:

- Leave configurations with duplicate names
- Overwrite configurations with duplicate names

### Send or cancel

---

Once you've selected a configuration group and the Leave or Overwrite options, you have two more choices:

- Send configuration group
- Cancel – to return to the previous menu.

### Send Single HART® DD to Communicator

---

You have the option to select one DD file to send to the communicator. You can send this DD file from any folder on your hard drive, CD/DVD, USB Drive, or network drive.

## DD file types

### Selecting a proper DD file type

---

If the file you select is not a proper DD file, an error message appears. See the screen shot below for DD file types.

