

Casters for Wet or Corrosive Areas


GOOD


5PCX



5PCBX

Polymer Stem Casters — {9.25}

Corrosion resistance and enhanced durability. Appropriate for all medium-duty mobile applications. Bumpers included.

- All-polymer horn, stainless axle, and hardware. 5" (127mm) diameter polyurethane, flat wheel.
- Sleeve style axle bearing and optional toe-operated brake mechanism
- Antimicrobial options have a tread with built-in antimicrobial product protection.

Wheel Diameter (in.) (mm)	Face (in.) (mm)	Load Rating (lbs.) (kg)	Type	Temperature Range (Continuous Usage) (Fahrenheit) (Celsius)	Approx. Pkd. Wt. (lbs.) (kg)	Cat. No.	Cat. No. Antimicrobial
5 127	1.25 32	300 135	Stem/Swivel	-20°-120° -29°-49°	2 0.9	5PCX	5PCXM
5 127	1.25 32	300 135	Stem/Brake	-20°-120° -29°-49°	2 0.9	5PCBX	5PCBXM
5 127	1.25 32	300 135	Stem/Rigid*	-20°-120° -29°-49°	2 0.9	5PCRX	—

*Note 1: Rigid casters are held in place by a connecting channel. When ordering, shelf width **must** be provided. Rigid connecting channel (aluminum) for 5PCRX caster: Cat. No. P18RC, P21RC, P24RC.

Note 2: Not suitable for cart wash and autoclave applications.


BETTER


5PSTE



5PSTEB

Polymer & Stainless Total-Guard Casters — {50.20}

Advanced rust & moisture protection - nylon rig, Stainless stem, TPE wheel tread.

Break caster has total lock function. When the brake is engaged, the caster wheel and swivel are locked.

- Best for high humidity chambers, MRI areas, RFID storage
- Very good chemical resistance
- Good for cart wash chambers
- Quieter than polyurethane options

Wheel Diameter (in.) (mm)	Face (in.) (mm)	Load Rating (lbs.) (kg)	Type	Wheel Tread	Temperature range (continuous) (Fahrenheit) (Celsius)	Cat No. Model No.
5 127	1.25 32	250 113	Stem/Swivel	TPE, Flat	-20° - 120° -29° - 49°	5PSTEX
5 127	1.25 32	250 113	Stem/Brake	TPE, Flat	-20° - 120° -29° - 49°	5PSTEBX


BEST


5MPXGSA



5MPBXGSA

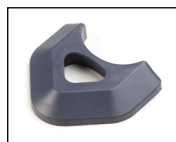
Stainless Steel Cart-Washable Stem Casters — {9.25}

- Stainless horn, axle, and stem with sealed bearings. Bumper included with each caster.

Wheel Diameter (in.) (mm)	Face (in.) (mm)	Load Rating (lbs.) (kg)	Type	Wheel Tread	Temperature Range (Continuous Usage) (Fahrenheit) (Celsius)	Approx. Pkd. Wt. (lbs.) (kg)	Cat. No.
5 127	1.25 32	300 135	Stem/Swivel	Polyurethane, Flat	-20°-180° -29°-82°	2.12 0.9	5MPXGSA
5 127	1.25 32	300 135	Stem/Brake	Polyurethane, Flat	-20°-180° -29°-82°	2.25 1	5MPBXGSA
5 127	1.25 32	300 135	Stem/Rigid*	Polyurethane, Flat	-20°-180° -29°-82°	2 0.9	5MPRXGSA

*Note: Rigid casters are held in place by a connecting channel. When ordering, shelf width **must** be provided. Rigid connecting channel (stainless steel): Cat. No. 18RS, 21RS, or 24RS.

Rigid stem casters are often ordered two per unit for improved tracking and handling. Rigid caster channel are provided with each two rigid stem casters at no charge.



Replacement Bumper
Tri-lobal polymer or steel post.
Cat. No. M9992DBX



**CASTER
INSTALLATION**