



Item # _____

We put space to work.

Job _____

Flexline® Carts and Drawers

Flexible options. Designed around you.

Flexline is designed with interchangeable components and accessories that can be combined in different configurations to conform to various applications.

- **Infection Control:** Flexline helps improve Infection Control with a cleaner design that includes corrosion proof polymer materials, smooth rounded corners to allow for easy cleaning and *Microban® Antimicrobial Product Protection that keeps the cart cleaner between cleanings.
- **Easy Mobility:** Lightweight polymer construction, integrated cart handles and 5" (127 mm) polyurethane casters, 2 directional and 2 total lock, provide for smooth transport and nimble maneuvering.
- **Active Security:** Security can range from simple key locks to advanced touchpads with an LCD display and up to 6,000 users. Basic and Advanced LCD touchpads can be upgraded with Proximity Card readers, and both types offer auto-locking and audit trail capability.
- **Passive Security:** Drawers can be individually sealed with serialized plastic security seals or simply place a seal on the cart latch and seal all drawers with one seal.
- **Added Security:** Additional secure storage may be had by specifying locking side bins. When ordered, these bins will be secured by the carts locking mechanism, either on the key lock side or passive lock side of the cart.
- **Field Upgradeable:** Drawers and many accessories may be added or reconfigured at the facility. Choose your drawers and accessories for today's application needs and change them to meet tomorrow's.
- **Organization and Identification:** Self-closing, full access drawers in a variety of heights, drawer dividers and labels, side storage accessories and an overbridge system are available to allow for easy access and identification of cart contents.
- **Spacious Worksurface** provides a smooth writing surface or ample space for prep work. For additional work space an optional pass through side shelf is available as an added bonus.
- **Identifiable:** Clean, contemporary design looks great in any professional environment. Ten drawer pull colors are available for easy identification of the cart or drawer purpose.
- **Configurations That Fit Your Budget:** Flexline is available in four heights and two widths and can be configured with or without a range of accessories, your choice!



FLXCOM-LT



FLXPRCO2



Metro incorporates several elements in its product design to support a facility's infection control processes:

- Microban® antimicrobial protection helps keep products "cleaner between cleanings"
- Polymer and other proprietary finishes provide corrosion resistance
- Smooth rounded corners to allow for easier cleaning

Look for the "red check" symbol for this added protection



*Microban® antimicrobial product protection helps keep surfaces "cleaner between cleanings" by inhibiting the growth of bacteria, mold and mildew that cause odors and stains on the shelf surface.

*MICROBAN® and the MICROBAN® symbol are registered trademarks of the Microban Products Company, Huntersville, NC.

All Metro Catalog Sheets are available on our website: www.metro.com



InterMetro Industries Corporation
 North Washington Street, Wilkes-Barre, PA 18705
 Product Information. U.S. and Canada: 1.800.992.1776
 Outside U.S. and Canada: www.metro.com/contactus

L02-117e
Printed in U.S.A. Rev. 9/21

Information and specifications are subject to change without notice. Please confirm at time of order.

Copyright © 2021 InterMetro Industries Corp.



Flexline® Carts and Drawers

35-30



Flexline® Carts and Drawers

Packages include carts and accessories.



Code Response Package FLCRP1



Code Response Package FLCRP2



Code Response Package FLCRP3



Code Response Package FLCRP4



Code Response Pediatrics FLPED1



Anesthesia Package FLXANES1



Isolation Package FLISO1



Isolation Pediatrics FLISO3



Bedside Package FLBED



*Treatment Package
FLXTMENT1 & FLWTMENT1*



Treatment Package FLTMENT2



Procedure Package FLXPROC1



Procedure Package FLXPROC2



Cast Package FLCAST



*Endoscopic Package
FLXENDO & FLWENDO*



Dressing Package FLDRS

Flexline® Carts and Drawers



Med/Surge Package *FLXMSRSG*



Central Line Package *FLXCLINE*



Airway Package
FLXAIR & FLWAIR

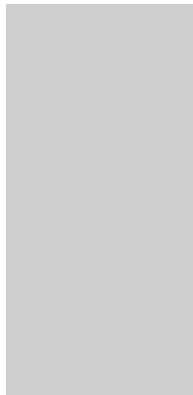


Nurse Server Package *FLNURSE*

Optional Drawer Pull Colors

Other drawer pull colors can be configured via Build-A-Cart from the Metro Healthcare Solutions Guide or the Metro Configurator. Both are accessible at Metro.com

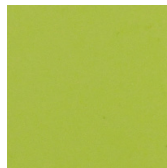
Color Reference Metro Code



Body Color



FL-CB



FL-GR



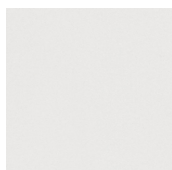
FL-YL



FL-OR



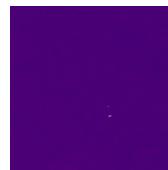
FL-RD



FL-WHT



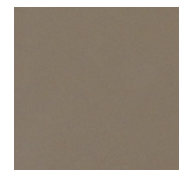
FL-PK



FL-VL



FL-SB



FL-TPE



Metro incorporates several elements in its product design to support a facility's infection control processes:

- Microban® antimicrobial protection helps keep products "cleaner between cleanings"
- Polymer and other proprietary finishes provide corrosion resistance
- Smooth rounded corners to allow for easier cleaning

Look for the "red check" symbol for this added protection



Flexline® Carts and Drawers

Flexline Application-Specific Carts

Carts shown on the previous pages are configured with the components and accessories listed here.

Accessories

Model No.	Description	FLORP1	FLORP2	FLORP3	FLORP4	FLPED1	FLVMIEST	FLSO1	FLSO2	FLSO3	FLBED	FLXMIT1	FLXMIT2	FLXPROC1	FLXPROC2	FLXCOM-IT	FLCAST	FLXENDO	FLDRS	FLXW	FLXGCU1	FLXGCU2	FLXMSDRG	FLXCLINE	FLXWR	FLNURSE
FL113	3" Drawer Divider Kit						1		1				2	3			1		2	2		1		2	X	
FL116	6"/9" Drawer Divider Kit						2		3				2	1			1		1	2		1		1	1	
FL131	Ampule Insert and 12 Divider for 3" Drawer Tray																			1						
FL151	3" Drawer Divider Tray with Dividers	2	3	2	3																					
FL159	6" Drawer Divider Tray with Dividers	1	1	2	2																					
FL211	Side Bin (1) — Locking	2		3	4																					
FL212	Side Bin (1) — Non Locking						4	2						3	3	3	4	3	4		4	3	3	2	3	2
FL221	Waste Basket 28 Quart and Holder						X										X		X					X		
FL234	O ₂ Tank Holder — Standard Cart, 4" diameter tank	X	X																							
FL235	O ₂ Tank Holder — 45" Tall Cart, 4" diameter tank				X	X																				
FL237	Glove Box Holder — Triple								X																	
FL251	Lockable Sharps Container		X				X							X						X			X	X		
FL302	Cord Manager		X	X	X																					
FL303	Defibrillator Strap Kit		X																							
LEC304	Adjustable Defibrillator Tray	X	X	X	X																					
FL305-4US	Hospital Grade 4-Outlet Strip and Holder	X	X	X	X									X				X				X				
LEC306	Suction Pump Shelf			X	X	X																				
LEC308	Backboard with Front Assembly Kit	X																								
LEC309	Backboard with Back Assembly Kit		X	X	X	X																				
FL310A	Articulating Laptop Arm (wt. range 2-13 lbs.)															X										
FL318A	Articulating Monitor Arm (wt. range 7.5-25 lbs.)																	X								
FL313	Peel Pouch/Catheter Holder						X																			
FL314	Pull Out Side Shelf			X	X	X			X					X			X	X				X	X			
FL315	2HK I.V. Pole with Cart Mount	X	X	X	X	X		X		X										X						
LEC320	Plastic Security Seals 100 pack	X	X	X	X	X																				
FL402	Individual Drawer Seal Lock Bar — Flex 42" Cart			X																						
FL403	Individual Drawer Seal Lock Bar — Flex 45" Cart					X																				
FLX412	Basic Touchpad (250 users, Auto Lock)											X									X					X
FLX420	Advanced LCD Touchpad						X							X	X	X		X				X	X	X		
FLX420W	Advanced LCD Touchpad w/ Wireless													X	X	X		X			X	X	X	X		
FL510	Overbridge with 2 Hanger Rails						X							X												
FL515	Overbridge with Top Shelf and Hanger Rail													X								X	X	X		
FL520	Overbridge with 2 Shelves																X									
FL544	Tilt Bin 4 for Overbridge						X																			
FL546	Tilt Bin 6 for Overbridge						X															X				
FL581	Half-Size Utility Bin													X												
FL583	Label/Tape Dispenser													X												
FL585	Wire Supply Basket													X								X				
FL586	Utility Bin with Cover													X								X				

Carts

Model No.	Description	FL-OB	FL-OB	FL-OB	FL-OB	FL-PED9	FL-SB	FL-YL	FL-YL	FL-YL	FL-YL	FL-GR	FL-SB	FL-SB	FL-TPE	FL-SB	FL-OR	FL-GN	FL-SB	FL-RD	FL-RD	FL-RD	FL-GN	FL-DTE	FL-SB	FL-YL	
FL21P	36" (914 mm) Cart — Passive Lock	X					X																			X	
FL24P	39" (991 mm) Cart — Passive Lock		X																								
FL27P	42" (1067 mm) Cart — Passive Lock			X																X							
FL30P	45" (1143 mm) Cart — Passive Lock				X	X										X											
FLN24P	39" (991 mm) Narrow Cart — Passive Lock								X																		
FLN30P	45" (1143 mm) Narrow Cart — Passive Lock									X																	
FL24K	39" (991 mm) Cart — Key Lock													X							X						
FL27K	42" (1067 mm) Cart — Key Lock													X	X		X				X	X	X		X		
FL30K	45" (1143 mm) Cart — Key Lock						X														X		X	X			
FLN21K	36" (914 mm) Narrow Cart — Key Lock									X	X													X			
FLN27K	42" (1067 mm) Narrow Cart — Key Lock											X												X			

FL- Drawer Pull Color

Drawers

Model No.	Description	FL-OB	FL-OB	FL-OB	FL-OB	FL-PED9	FL-SB	FL-YL	FL-YL	FL-YL	FL-YL	FL-GR	FL-SB	FL-SB	FL-TPE	FL-SB	FL-OR	FL-GN	FL-SB	FL-RD	FL-RD	FL-RD	FL-GN	FL-DTE	FL-SB	FL-YL
FL101	3" (76 mm) Pull Out Shelf													1		1						1				
FL102	Keyboard Tray													1		1										
FL103L	3" (76 mm) Narcotics Box/Individual Locking Drawer						1																			
FL103	3" (76 mm) Drawer	2	3	4	3	8	2	1	1	2	1	2	2	3	1	3	2	3	3	3	3	1	2	3	3	2
FL106	6" (152 mm) Drawer	1	1	1	2	1	2	2	2		1	3	2	1	0	2	2			1	2	1	2	2	2	1
FL109	9" (229 mm) Drawer	1	1	1	1	1	1	1	3	1		1	1	2	1	1	1	1	2	1	1	1	1	1	2	1
FL112	12" (305 mm) Drawer													1												



We put space to work.



Flexline® Carts and Drawers

Flexline® Carts and Drawers

Specifications

- **Cart Body:** Blow molded high density polyethylene (HDPE) body panels and top with Microban antimicrobial product protection. Top has integrated push handle. Side panels provide integrated accessory strips to allow no tool assembly of most accessories. Bins are available as locking or non-locking.
- **Cart Frame:** Epoxy coated 14 gauge, cold rolled steel
- **Locking Mechanism:** 12 gauge stainless steel bar with polycarbonate drawer mounted lock tabs. Passive security provided for drawers and left side bins (optional) with plastic security seal. Key lock mechanism provided for drawers and right side bins (optional). Electronic touchpads are optional for key lock carts.
- **Casters:** Four 5" (127 mm) diameter stem casters with polyurethane tread and polymer horn: 2 Swivel lock — Rear, 2 total lock (brake and swivel lock) — Front.
- **Wheel Base:** Built-in extended base frame provides cart stability to adequately support articulating arms and overbridge accessories.
- **Drawers:** ABS injection molded drawer body, blow molded HDPE with Microban antimicrobial drawer front, ABS and Microban antimicrobial injection molded colored drawer pull and full extension, self-closing, ball bearing drawer slides.

Inside Dimension: 16 3/4" x 20" (425 x 508 mm)

Weight Capacity	Inside Height
3" (76 mm) = 15 lbs. (6.75 kg)	2.75" (70 mm)
6" (152 mm) = 25 lbs. (11.25 kg)	5.75" (146 mm)
9" (228 mm) = 45 lbs. (20.25 kg)	8.75" (222 mm)
12" (305 mm) = 45 lbs. (20.25 kg)	11.75" (298 mm)

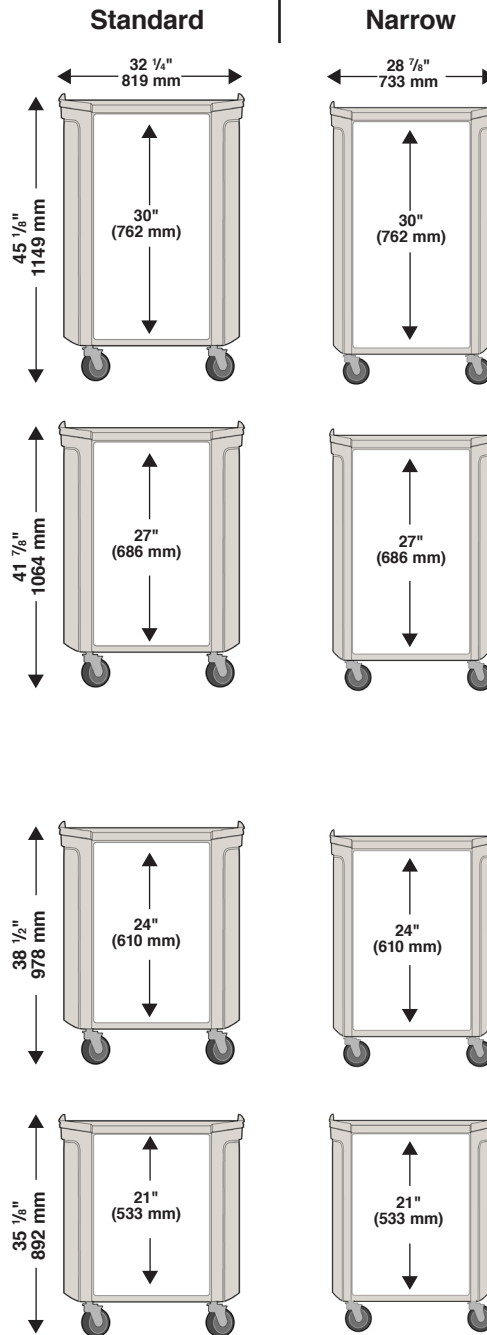
- **Pullout shelf:** 1.75" (44mm) high epoxy coated 16 gauge cold rolled steel, with full extension, self-closing, ball bearing drawer slides. Weight Capacity: 45 lbs. (20.25kg)

Standard Cart Dimensions (D x L x H):

22 3/8" x 32 1/4" x 45 1/4"	(568 x 819 x 1149 mm)
22 3/8" x 32 1/4" x 41 7/8"	(568 x 819 x 1064 mm)
22 3/8" x 32 1/4" x 38 1/2"	(568 x 819 x 978 mm)
22 3/8" x 32 1/4" x 35 1/8"	(568 x 819 x 892 mm)

Narrow Cart Dimensions (D x L x H):

22 3/8" x 28 7/8" x 45 1/4"	(568 x 733 x 1149 mm)
22 3/8" x 28 7/8" x 41 7/8"	(568 x 733 x 1064 mm)
22 3/8" x 28 7/8" x 38 1/2"	(568 x 733 x 978 mm)
22 3/8" x 28 7/8" x 35 1/8"	(568 x 733 x 892 mm)



an Ali Group Company



The Spirit of Excellence

35-30