

**Power Button / Status Light:** Push down and hold to sync the MimioPad™ wireless pen tablet to the MimioHub™ wireless receiver. Repeat this process to add multiple MimioPad tablets to the same MimioHub receiver.

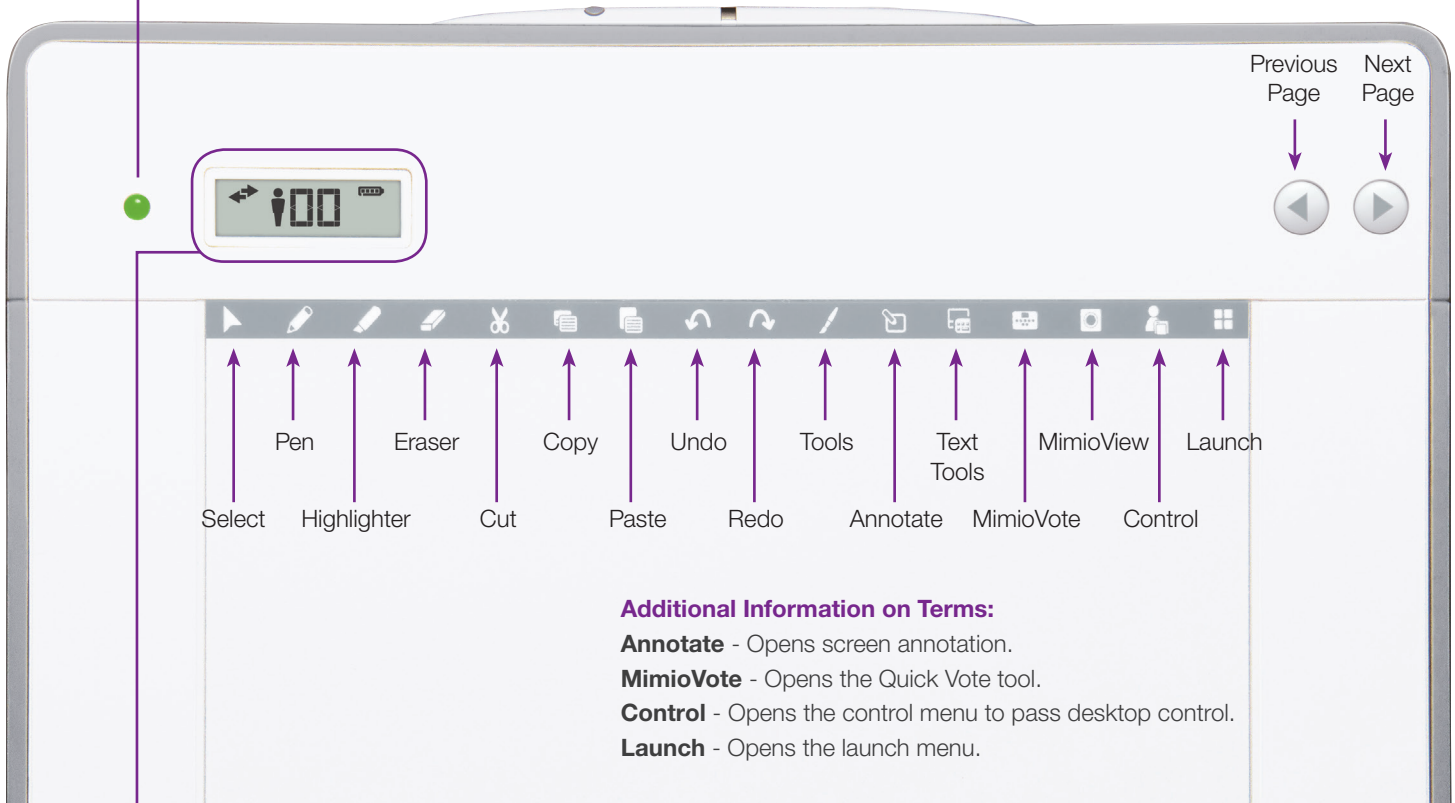
**Status Light:**

**Off** - MimioPad tablet is not receiving power or is off.

**Solid Green** - MimioPad tablet is connected and receiving power; MimioStudio™ software is running.

**Flashing Green** - MimioPad tablet is connected and receiving power; MimioStudio software is not running.

**Solid Amber** - MimioPad tablet is connected and receiving power; MimioPad tablet is searching for connection to the MimioHub receiver.



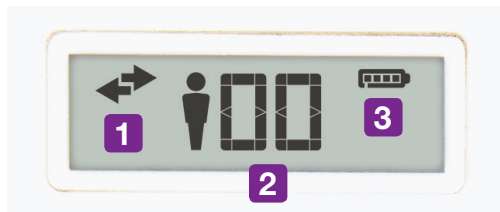
**Additional Information on Terms:**

**Annotate** - Opens screen annotation.

**MimioVote** - Opens the Quick Vote tool.

**Control** - Opens the control menu to pass desktop control.

**Launch** - Opens the launch menu.



**LED Display:**

**1 Left arrow** – MimioPad tablet is connected to the computer and ready to transfer data.

**Right arrow** – Stylus is in communication range of the MimioPad tablet.

**2 Unit Number** - The MimioPad tablets in student mode do not include person icon.

**3 Battery Indicator**

## Hardware Components



Battery-less stylus magnetically attaches at top of the MimioPad tablet.

Stylus button creates Right-Click.



**Micro-USB Connection** -  
Connect to computer to charge.

## Control and Collaborate

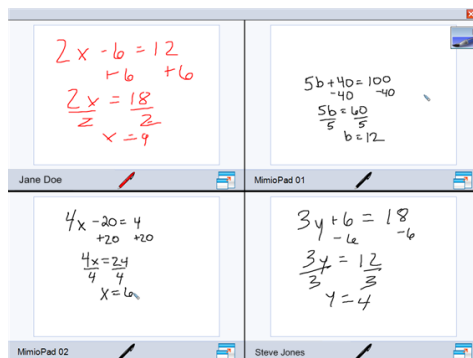
Select any student using a mobile device\* equipped with the Mimio-Mobile app or a MimioPad tablet to give control to that student.

Take back control by clicking Control and choosing Teacher device.

Give control to another student by clicking Control and choosing that student's device.

Up to nine mobile devices\*, MimioPad tablets, or a combination of each can be connected at once. All will be able to independently use their own whiteboard space, and all Collaborate sessions will be displayed at the front of the classroom.

\* Supported Devices: iPad 2 and higher and iPad mini



Collaborate

