

# Thickness Gages

## SERIES 547, 7

Thickness Gages offer a quick and efficient means of inspection with a convenient grip handle, thumb trigger and spring-loaded spindle. The various models cover a range of applications.

### FEATURES

- Wide range of applications with various types of measuring faces (on the spindle and anvil).

### Flat-Anvil Type

#### Standard Type / Digital



#### Deep-Throat Type / Digital



#### Deep-Throat Type / Dial

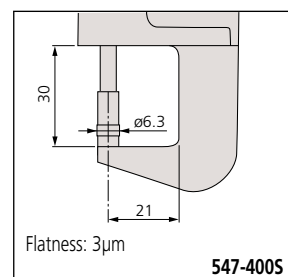


#### High-Accuracy Type / Digital



- Digital models incorporate Mitutoyo's popular ID-C and ID-S Series Digimatic Indicators to provide error-free LCD readings, as well as data output for SPC analysis.
- **547-400S** is ideally suited for measuring thicknesses of paper, film, wire, sheet metal and similar materials.

### DIMENSIONS



SPC

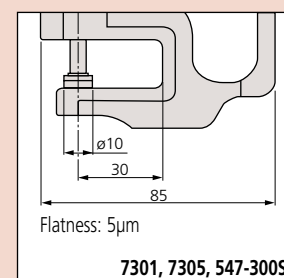
**ABSOLUTE**  
Absolute System Patented by MITUTOYO

### Technical Data Function of Digital Models

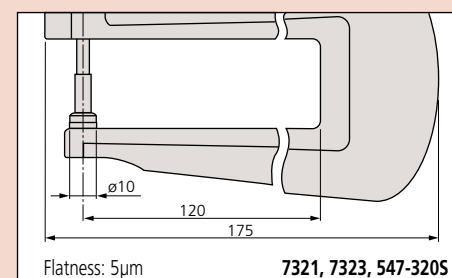
- IDS Types
- ON/OFF
  - Inch / mm Conversion
  - Origin
  - $\pm$ Direction Changeover
  - SPC Output
  - Battery Life: 20,000 hrs
  - Power Supply: Silver Oxide Cell (SR-44 1pc.)

- IDC Types
- ON/OFF
  - Inch / mm Conversion
  - Zero / ABS
  - $\pm$ Direction Changeover
  - SPC Output
  - Battery Life: 5,000 hrs
  - Power Supply: Silver Oxide Cell (SR-44 1pc.)
  - Preset
  - Provides go/no-go judgment
  - Face Rotates 330°

### DIMENSIONS



Unit: mm



# Thickness Gages

## SERIES 547, 7

### Optional Accessories

- 905338:** SPC cable (40" / 1m) for digital type  
**905409:** SPC cable (80" / 2m) for digital type  
**902794:** Spindle lifting lever for IDS digimatic type (stroke .5" / 12.7mm)

### Standard Accessories

- 21AZB149:** Spindle lifting lever for digimatic and dial thickness gage (stroke .5" / 12.7mm)  
**21AZB150:** Spindle lifting lever for dial indicator (stroke 1" / 25.4mm)

### Flat Anvil

#### SPECIFICATIONS

Inch/Metric		Digital Type				
Range	Order No.	Resolution	Accuracy	Measuring Force	Indicator	Spindle/Anvil Material
0 - .47" / 0 - 12mm	<b>547-500S</b>	.0005"/0.01mm	±.001"	1.5N or less	Digimatic IDS	Ceramic
0 - .47" / 0 - 12mm	<b>547-520S</b>	.0005"/0.01mm	±.001"	1.5N or less	Digimatic IDS	Ceramic
0 - .47" / 0 - 12mm	<b>547-526S</b>	.0001"/0.001mm	±.0002"	1.5N or less	Digimatic IDS	Ceramic
0 - .4" / 0 - 10mm	<b>547-300S</b>	.0005"/0.01mm	±.001"	1.5N or less	Digimatic IDC	Ceramic
0 - .4" / 0 - 10mm	<b>547-320S</b>	.0005"/0.01mm	±.001"	1.5N or less	Digimatic IDC	Ceramic
0 - .47" / 0 - 12mm	<b>547-400S</b>	.00005"/0.001mm	±.00015"	3.5N or less	Digimatic IDC	Carbide

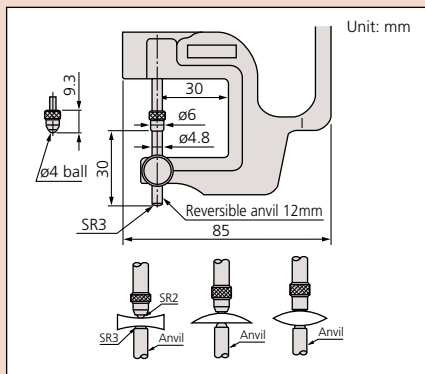
#### Inch

		Dial Type				
Range	Order No.	Graduation	Accuracy	Measuring Force	Remarks	
0 - .05"	<b>7326S</b>	.0001"	±.0002"	1.4N or less	Fine dial reading, ceramic spindle/anvil	
0 - .5"	<b>7300S</b>	.001"	±.001"	1.4N or less	Standard, ceramic spindle/anvil	
0 - 1"	<b>7304S</b>	.001"	±.002"	2.0N or less	Standard, ceramic spindle/anvil	
0 - 1"	<b>7322S</b>	.001"	±.002"	2.0N or less	Deep throat, ceramic spindle/anvil	

#### Metric

		Dial Type				
Range	Order No.	Graduation	Accuracy	Measuring Force	Remarks	
0 - 1mm	<b>7327</b>	0.001mm	±5μm	1.4N or less	Fine dial reading, ceramic spindle/anvil	
0 - 10mm	<b>7301</b>	0.01mm	±15μm	1.4N or less	Standard, ceramic spindle/anvil	
0 - 20mm	<b>7305</b>	0.01mm	±20μm	2.0N or less	Standard, ceramic spindle/anvil	
0 - 10mm	<b>7321</b>	0.01mm	±15μm	1.4N or less	Deep throat, ceramic spindle/anvil	
0 - 20mm	<b>7323</b>	0.01mm	±22μm	2.0N or less	Deep throat, ceramic spindle/anvil	

### DIMENSIONS



### Lens thickness measurement (reverse anvil)



#### SPECIFICATIONS

Inch/Metric		Digital Type				
Range	Order No.	Resolution	Accuracy	Measuring Force	Indicator	
0 - .47" / 0 - 12mm	<b>547-512S</b>	.0005"/0.01mm	±.001"	1.5N or less	Digimatic IDS	
0 - .4" / 0 - 10mm	<b>547-312S</b>	.0005"/0.01mm	±.001"	1.5N or less	Digimatic IDC	

#### Inch

		Dial Type				
Range	Order No.	Graduation	Accuracy	Measuring Force	Remarks	
0 - .5"	<b>7312S</b>	.001"	±.001"	1.4N or less	Lens thickness	

#### Metric

		Dial Type				
Range	Order No.	Graduation	Accuracy	Measuring Force	Remarks	
0 - 10mm	<b>7313</b>	0.01mm	±15μm	1.4N or less	Lens thickness	