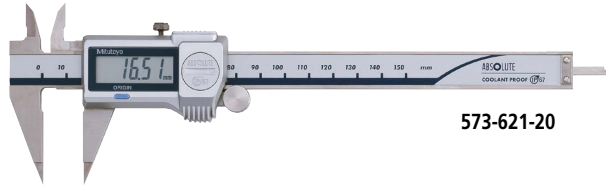


# Calipers

## Point Caliper SERIES 573, 536 — ABSOLUTE Digimatic and vernier types

- Narrow-tip jaws fit into very small grooves and tracks.
- Allows step measurement.
- Digimatic models are IP67 Absolute type. Slider action is smooth, firm and comfortable.



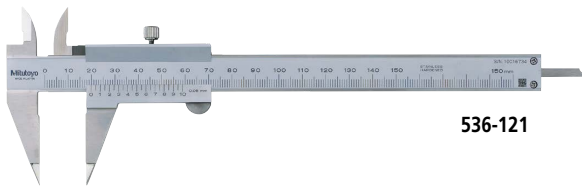
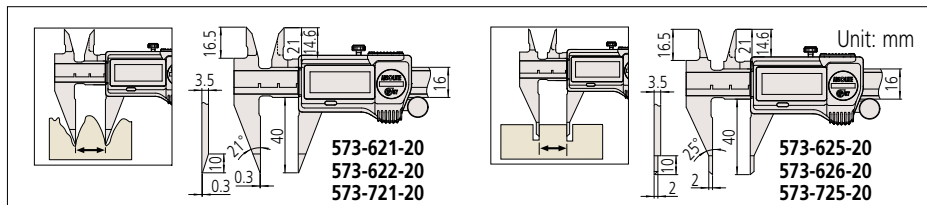
### SPECIFICATIONS

Order No.	Range (mm)	Resolution (mm)	Maximum permissible error (mm)* <sup>2</sup>	
			<i>E</i> <sub>MPE</sub>	<i>S</i> <sub>MPE</sub>
573-621-20	0 - 150	0.01	±0.02	±0.04
573-625-20	0 - 150		±0.02	±0.04
573-622-20* <sup>1</sup>	0 - 150		±0.02	±0.04
573-626-20* <sup>1</sup>	0 - 150		±0.02	±0.04

Order No.	Range	Resolution	Maximum permissible error* <sup>2</sup>	
			<i>E</i> <sub>MPE</sub>	<i>S</i> <sub>MPE</sub>
573-721-20	0 - 6 in/0 - 150 mm	0.0005 in/0.01 mm	±0.001 in/±0.02 mm	±0.002 in/±0.04 mm
573-725-20				

- Dust/Water protection level: IP67 (IEC 60529)\*<sup>3</sup>
- Battery: SR44 (1 pc.), **938882**, for initial operational checks (standard accessory)
- Battery life: Approx. 5 years under normal use
- Scale type: ABSOLUTE electromagnetic induction linear encoder
- Max. response speed: Unlimited
- With depth bar
- \*1 Without thumb roller
- \*2 Partial Surface Contact Error, *E*<sub>MPE</sub> and Shift Error, *S*<sub>MPE</sub> are terms (notations) used in ISO 13385-1:2019.
- \*3 Rustproofing shall be applied after use if caliper was in contact with coolant.

### DIMENSIONS

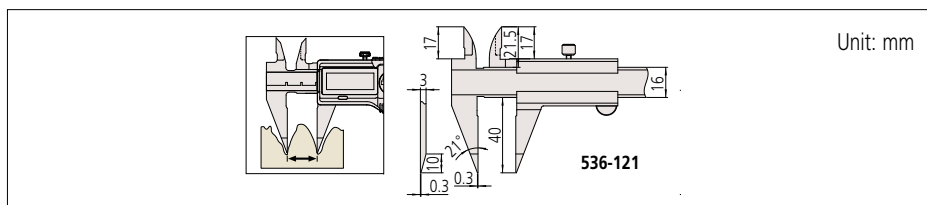


### SPECIFICATIONS

Order No.	Range (mm)	Graduation (mm)	Maximum permissible error (mm)*	
			<i>E</i> <sub>MPE</sub>	<i>S</i> <sub>MPE</sub>
536-121	0 - 150	0.05	±0.05	±0.07

- With depth bar
- \* Partial Surface Contact Error, *E*<sub>MPE</sub> and Shift Error, *S*<sub>MPE</sub> are terms (notations) used in ISO 13385-1:2019.

### DIMENSIONS



### ABSOLUTE™

Applicable models: series 573



### Measurement example



### Optional Accessories (for series 573)

Order No.	Type	Description
05CZA624	A	Connecting cables for IT/DP/MUX (1 m)
05CZA625	A	Connecting cables for IT/DP/MUX (2 m)
06AFM380A	A	USB Input Tool Direct (2 m)
02AZD790A	A	Connecting cables for U-WAVE-T (160 mm)
02AZE140A	A	Connecting cables for U-WAVE-T For foot switch
264-620	IP67	U-WAVE-TC
264-621	Buzzer	U-WAVE-TC
264-624	IP67	U- WAVE-TCB Transmitter
264-625	Buzzer	U- WAVE-TCB Transmitter
02AZF310	IP67	Connecting unit for U-WAVE-TC/TCB