

Head Specifications (Accessories)

# Gage Head Mounting Fixtures

## Mounting with a thrust stem

A thrust stem is available as an option for the **LG100**, and **LG200** gage heads. Installing a thrust stem on the stem allows direct mounting, simply by drilling a hole in a section of suitable thickness on the fixture.

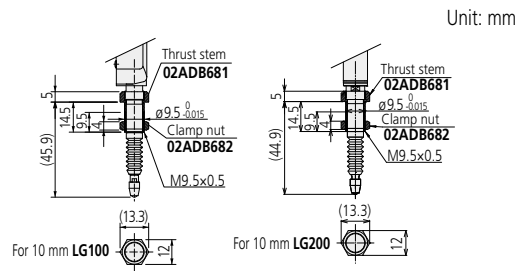


For 10 mm **LG100/LG200** Components Thrust stem: **02ADB681**  
 Clamp nut: **02ADB682**  
 Wrench: **02ADB683**

Note: A mounting section with a thickness of 6 through 10.5 mm is suitable.  
 With the use of a thrust stem and clamp nut, a gage fixture can be arranged simply by drilling a 9.5 mm dia. hole. A gage can be secured firmly with ease with this arrangement.

**IMPORTANT**  
 In attaching a thrust stem, be sure to fix the stem first with a dedicated wrench (**02ADB683**). An excessive force applied between the gage main body and stem may cause damage to the gage.

**NOTE**  
 Both the dedicated wrench (**02ADB683**) and M9.5x0.5 threaded section are for mounting a thrust stem. Do not use them for any purpose other than mounting a thrust stem.

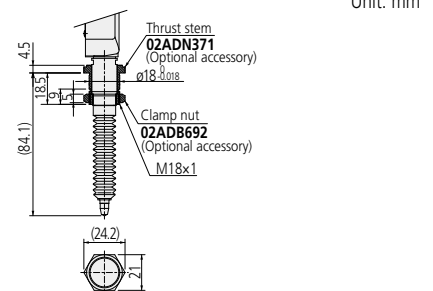


For 25 mm **LG100** Components Thrust stem: **02ADN371**  
 Clamp nut: **02ADB692**  
 Wrench: **02ADB693**

Note: A mounting section with a thickness of 10 through 12 mm is suitable.  
 With the use of a thrust stem and clamp nut, a gage fixture can be arranged simply by drilling an 18 mm dia. hole. A gage can be secured firmly with ease with this arrangement.

**IMPORTANT**  
 In attaching a thrust stem, be sure to fix the stem first with a dedicated wrench (**02ADB693**). An excessive force applied between the gage main body and stem may cause damage to a gage.

**NOTE**  
 Both the dedicated wrench (**02ADB693**) and M14x0.5 threaded section are for mounting a thrust stem. Do not use them for any purpose other than mounting a thrust stem.

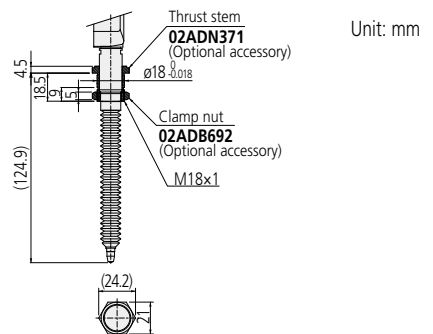


For 50 mm **LG100** Components Thrust stem: **02ADN371**  
 Clamp nut: **02ADB692**  
 Wrench: **02ADB693**

Note: A mounting section with a thickness of 10 through 12 mm is suitable.  
 With the use of a thrust stem and clamp nut, a gage fixture can be arranged simply by drilling an 18 mm dia. hole. A gage can be secured firmly with ease with this arrangement.

**IMPORTANT**  
 In attaching a thrust stem, be sure to fix the stem first with a dedicated wrench (**02ADB693**). An excessive force applied between the gage main body and stem may cause damage to a gage.

**NOTE**  
 Both the dedicated wrench (**02ADB693**) and M14x0.5 threaded section are for mounting a thrust stem. Do not use them for other purpose than mounting a thrust stem.



## SPECIFICATIONS

Compatible gage	LG100/LG200 10 mm	LG100 25/50 mm
Thrust stem set*	<b>02ADB680</b>	<b>02ADN370</b>
Thrust stem	<b>(02ADB681)</b>	<b>(02ADN371)</b>
Clamp Nut	<b>(02ADB682)</b>	<b>(02ADB692)</b>
Wrench	<b>02ADB683</b>	<b>02ADB693</b>
Gage mounting hole diameter (nominal)	ø9.5 mm	ø18 mm
Recommended plate thickness (mounting section)	6 to 10.5 mm	10 to 12 mm

\* A thrust stem set is comprised of a thrust stem and clamp nut. A dedicated wrench is required for tightening. To use more than one gage, purchase thrust stem sets for the number of gages plus a special spanner.