

Optional Accessories
SERIES 544 — Laser Scan Micrometer (Measuring Unit)

Standard calibration gage set

- Standard gage set suitable for calibration of Laser Scan Micrometers.
- Nominal gage diameters (1 to 160 mm) are as given in Specifications.



SPECIFICATIONS

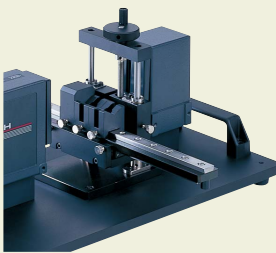
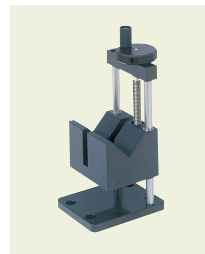
For calibrating models		LSM-6902H	LSM-500S	LSM-501S	LSM-503S	LSM-506S	LSM-512S	LSM-516S	LSM-9506
Set No.		02AGD180	02AGD110	02AGD120	02AGD130	02AGD140	02AGD150	02AGM300	02AGD170
Configuration (Order No.)	Stand	02AGD181	02AGD111	02AGD121	02AGD131	02AGD141	02AGD151	02AGM320	02AGD171
	Gages	ø1: 02AGD920 ø25: 02AGD963	ø0.1: 958200 ø2: 958202	ø0.1: 958200 ø10: 229317	ø1: 02AGD920 ø30: 02AGD961	ø1: 02AGD920 ø60: 02AGD962	ø20: 229730 ø120: 234072	ø20: 229730 ø160: 02AGM303	ø1: 02AGD920 ø60: 02AGD962
	Carrying case	02AGD190	958203	958203	02AGD980	02AGD980	02AGD990	02AGM310	02AGD970

Workstage

- Easy set-up and height adjustment enables high-precision measurement.

SPECIFICATIONS

Model	LSM-501S LSM-503S LSM-6902H
Order No.	02AGD270

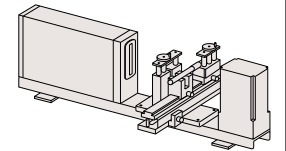
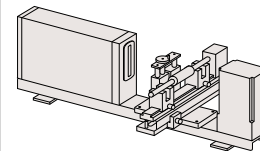


Adjustable workstage

- Vertical/horizontal slide mechanism enables easy measurement of various workpiece diameters.
- Suitable for quality control of high-precision shafts, rollers, pin gages and similar.

Measurement Examples

- Roller of copying machine
- Pin gage or plug gage



Basic configuration

Basic set	Order No.	Model	Standard Accessories	Measuring range (mm)	Horizontal stroke (mm)	Vertical stroke (mm)
1) Main unit 2) V-block 3) Stop	02AGD280	LSM-6902H	V-block (02AGD420), 2 pcs. Stopper (02AGD430), 1 pc.	0.1 - 25	130	47
	02AGD400	LSM-501S		0.05 - 10	130	32
	02AGD490	LSM-503S		0.3 - 30	200	35
	02AGD520	LSM-506S*	V-block A (02AGD550), 2 pcs. V-block B (02AGD560), 1 pc. V-block C (02AGD570), 1 pc.	1 - 60	300	45
	02AGD370	LSM-9506*		0.5 - 60	200	45
	02AGD680			0.5 - 60	300	45

* The stop is not included in the basic set for these models.

Note: Optional part for the adjustable workstage, such as center support, adjustable V-block (up/down) etc., are available.

Guide pulley

- Used for supporting measurement of outside diameter of fine wirelike materials such as magnetic wire or fiber.

SPECIFICATIONS

Model	LSM-500S	LSM-501S
Order No.	02AGD200	02AGD210

Note 1: Each measurement range is as follows:

LSM-500S: ø5 µm to ø1.6 mm

LSM-501S: ø50 µm to ø2 mm

Note 2: For calibration, the calibration gage set for LSM-500S (02AGD110) is required.

