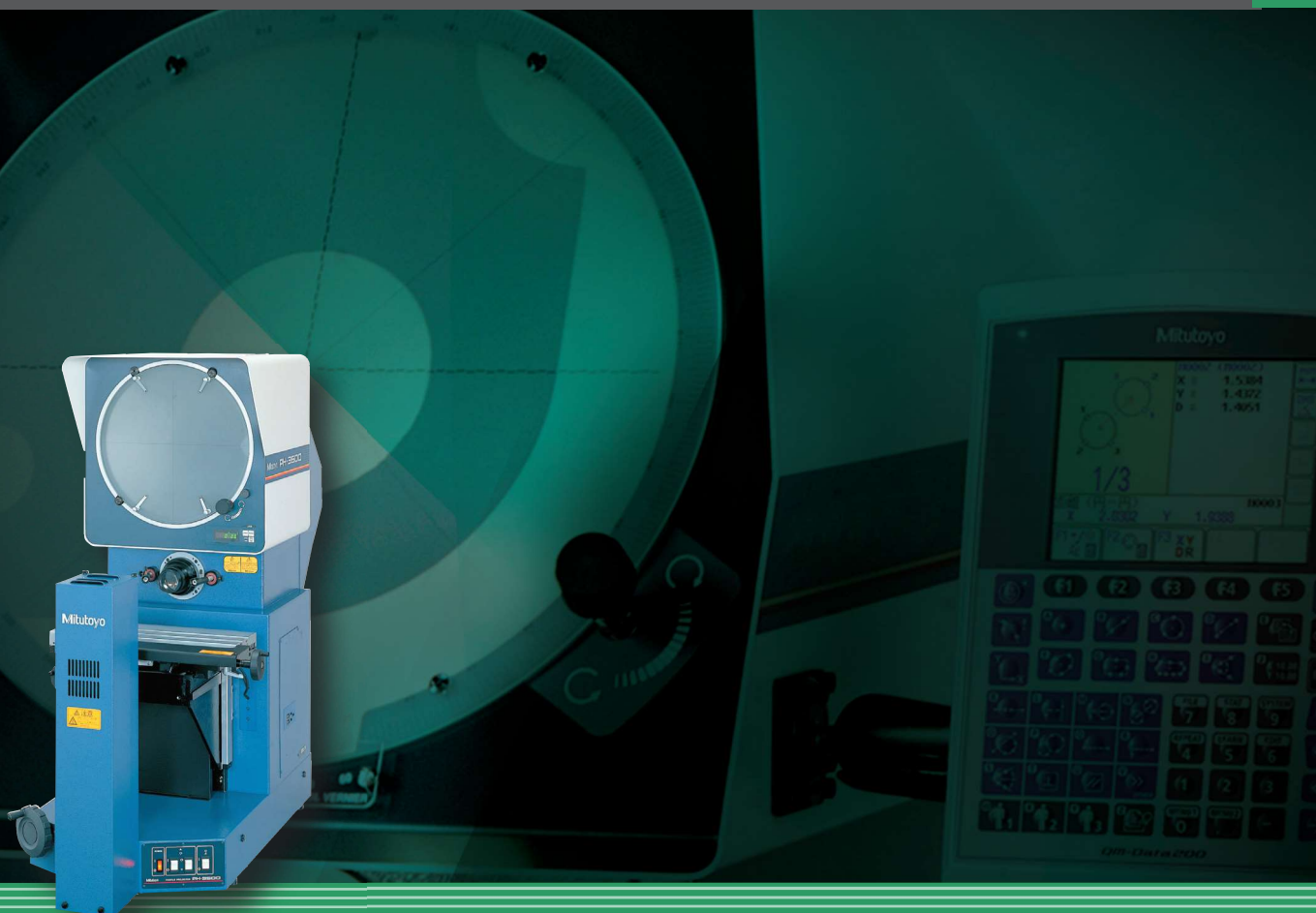


## PH-3515F PROFILE PROJECTOR

Heavy-Duty, Bench-Top Model with Horizontal Optical System

OPTICAL MEASURING



# Mitutoyo introduces the PH-3515F Profile Projectors that will meet any optical measuring or inspection challenge your shop can offer!

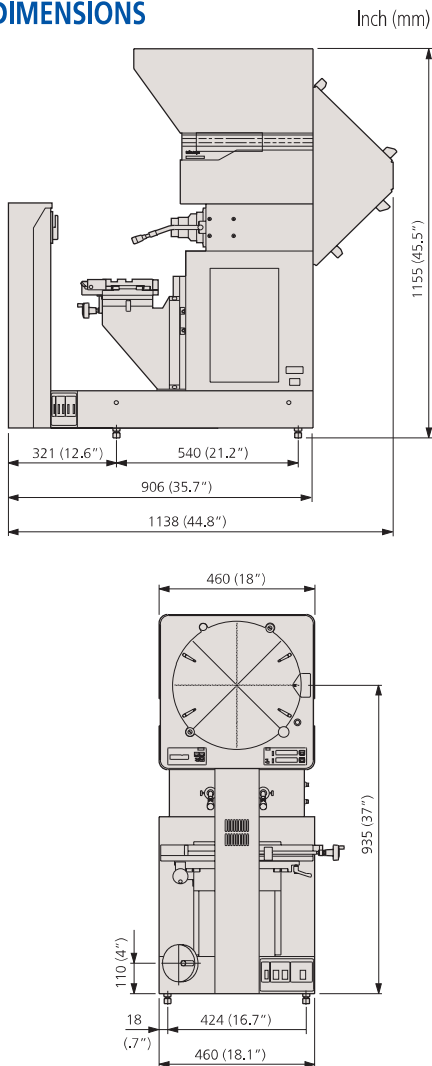
## FEATURES

- Erect image on high brightness screen.
- 14" (353mm) dia. protractor screen with crosshairs and staggered lines for easy alignment.
- Digital angle measurement of 1' or 0.01° with built in angle counter.
- Floating-type workstage incorporates linear scales for fast, accurate measurement.
- Halogen contour illumination.
- Fiber-optic illumination cables and halogen included.
- Suitable for thread pitch measurements — free from blurred or distorted images when the workpiece is angled.
- Wide range of accessories for varied applications.



Also available:  
Optional side mount surface illumination unit (172-423)

## DIMENSIONS

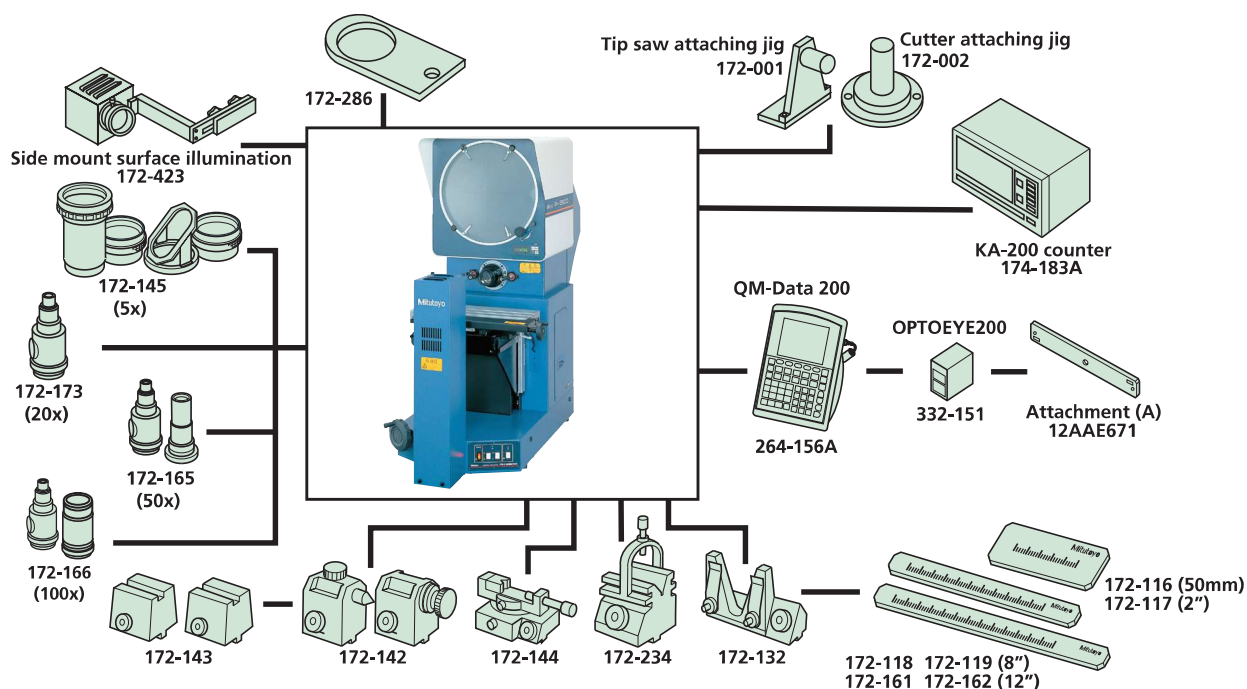


## SPECIFICATIONS

Model No.	PH-3515F	
Order No.	172-868A	
Projected Image	Erect image	
Protractor screen	Effective diameter	14" / 353mm
	Screen material	Fine ground glass
	Reference line	Cross hair line
	Screen rotation	±360°, fine feed and clamp
	Angle display(LED)	Resolution: 1' or 0.01°(switchable), Range: ±370°, Functions: Absolute/incremental mode switching, Zero set
Projection lens	Standard accessory: 10x(172-184), Optional accessories: 5X, 20X, 50X, 100X	
Magnification accuracy	Contour illumination	±0.1% or less
	Surface illumination	±0.15% or less
Contour illumination	light source	Halogen bulb (24V 150W)
	Optical system	Telecentric system
	Functions	2-step brightness switch, Heat-absorbing filter, Cooling fan
Surface illumination (Optional accessories)	light source	Halogen bulb(24V 150W)
	Functions	Adjustable condenser lens. Heat-absorbing filter, Cooling fan
	Table travel (X-axis)	10" / 254mm
	Table size (X, Z)	17.7"x5.7" / 450x146mm
	Vertical travel (Y-axis)	6" / 152mm
XY Stage	Resolution	0.001mm/.00005"*
	Measuring Unit	Built in Linear scale
Power supply	Max. workpiece width	See (L) on page I-10
	Max. workpiece load	100lbs / 45kg
Mass	120V AC, 50/60Hz	
Standard accessories	333lbs / 150kg	
	10x projection lens set, work stage, power cord, halogen bulb, tube fuse, grounding wire, allen wrench, Vinyl cover	

\* Counter not included

## SYSTEM DIAGRAM

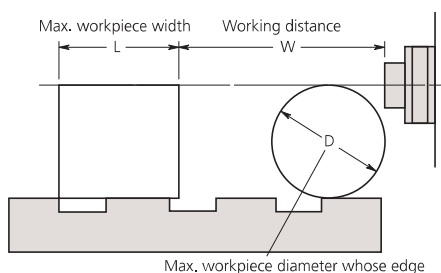


## ACCESSORIES

### Projection Lenses



### Projection Capacity



PH-3515F

Unit: mm

	Magnification				
	5X	10X	20X	50X	100X
View field	70.6	35.3	17.65	7.06	3.5
L	175	235	235	80	109
W	160 (64)	93 (35)	40	14.6	9.5
D	152.4	152.4	116	30.4	19

( ): When using surface illumination

### Workstage



XY range	X-axis (horizontal travel): 10" (254mm)
Y-axis (vertical travel): 6" (152mm)	
Measuring unit	Linear Scale for each axis (AT100 Series)
Display unit	(Optional)
Stage size (WxD)	17.72"x5.75" (450x146mm)
Swivel range	±10° (30° readout)
Max. workpiece load	99 lbs. (45kg)
Dovetail groove	Two (Pitch= 1.69" (43mm))
Focusing travel	2" (50mm)

**KA-200 Counter: 174-183A**  
64AAB149: Counter stand



**QM-Data200**

2-D data processing unit.  
264-155A: Stand mount type  
264-156A: Arm mount type



**332-151: Optoeye**  
Edge detection system for QM-Data 200  
12AAE671: Detector attachment (A)

See page 4 for additional optional accessories

## Optional Accessories

- 172-184: 10X projection lens (standard accessory)
- 172-173: 20X projection lens
- 172-165: 50X projection lens set
- 172-166: 100X projection lens set
- 172-116: Standard scale (50mm)
- 172-117: Standard scale (2")
- 172-118: Reading scale (200mm)
- 172-161: Reading scale (300mm)
- 172-119: Reading scale (8")
- 172-162: Reading scale (12")
- 172-286: Green filter
- 512305: Halogen bulb (24V, 150W) (standard accessory)

## Fixture and Stage accessories

- 172-142: Center support
- 172-143: Center support riser
- 172-144: Rotary vise  
(Max. workpiece dia.: 2.4" / 60mm)
- 172-234: V-block with clamp  
(Max. workpiece dia.: 2" / 50mm)
- 172-132: Vertical holder
- 64AAB176: Machine stand 22"W x 25" D x 26"H

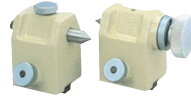
## Stand

- 64AAB176  
Locking door  
22"W x 25"H x 29"D



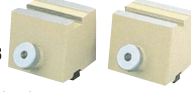
## Center Support

- 172-142  
Clamps a cylindrical workpiece such as a screw  
Workpiece dia.: 120mm max



## Center Support Riser

- 172-143  
Widens the damping capacity of the center support to a maximum diameter of 240mm.



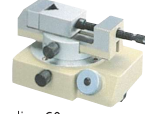
## Reading Scales

- 172-118 (200mm)
  - 172-161 (300mm)
  - 172-119 (8")
  - 172-162 (12")
- Designed for checking the magnified image of a standard scale.



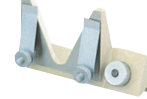
## Rotary Vise

- 172-144  
Workpiece dia.: 60mm max



## Vertical Holder

- 172-132  
Set up a thin workpiece easily



## Standard Scales

- 172-116 (50mm)
  - 172-117 (2")
- Used for checking magnifying accuracy.



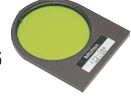
## V-Block w/ Clamp

- 172-234  
Workpiece dia.: 50mm max



## Green Filter

- 172-286  
Increases the screen sharpness of the contour image.



## Coordinate Measuring Machines

## Vision Measuring Systems

## Form Measurement

## Optical Measuring



## Sensor Systems

## Test Equipment and Seismometers

## Digital Scale and DRO Systems

## Small Tool Instruments and Data Management



## Whatever your challenges are, Mitutoyo supports you from start to finish.

Mitutoyo is not only a manufacturer of top-quality measuring products but one that also offers qualified support for the lifetime of the equipment, backed by comprehensive services that ensure your staff can make the very best use of the investment.

Apart from the basics of calibration and repair, Mitutoyo offers product and metrology training, as well as IT support for the sophisticated software used in modern measuring technology. We can also design, build, test and deliver measuring solutions and even, if deemed cost-effective, take your critical measurement challenges in-house on a sub-contract basis.



Find additional product literature and our product catalog

[www.mitutoyo.com](http://www.mitutoyo.com)

**Note:** All information regarding our products, and in particular the illustrations, drawings, dimensional and performance data contained in this printed matter as well as other technical data are to be regarded as approximate average values. We therefore reserve the right to make changes to the corresponding designs. The stated standards, similar technical regulations, descriptions and illustrations of the products were valid at the time of printing. In addition, the latest applicable version of our General Trading Conditions will apply. Only quotations submitted by ourselves may be regarded as definitive. Specifications are subject to change without notice.

Mitutoyo products are subject to US Export Administration Regulations (EAR). Re-export or relocation of our products may require prior approval by an appropriate governing authority.

### Trademarks and Registrations

Designations used by companies to distinguish their products are often claimed as trademarks. In all instances where Mitutoyo America Corporation is aware of a claim, the product names appear in initial capital or all capital letters. The appropriate companies should be contacted for more complete trademark and registration information.

# Mitutoyo

## Mitutoyo America Corporation

[www.mitutoyo.com](http://www.mitutoyo.com)  
One Number to Serve You Better  
1-888-MITUTOYO (1-888-648-8869)

## M<sup>3</sup> Solution Centers:

Aurora, Illinois (Headquarters)  
Boston, Massachusetts  
Huntersville, North Carolina  
Mason, Ohio  
Plymouth, Michigan  
City of Industry, California  
Birmingham, Alabama  
Renton, Washington  
Houston, Texas