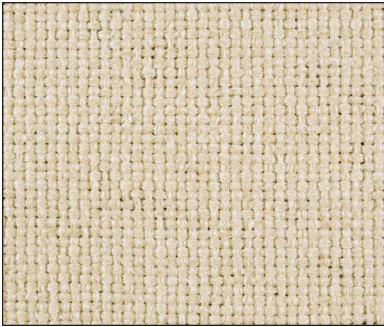
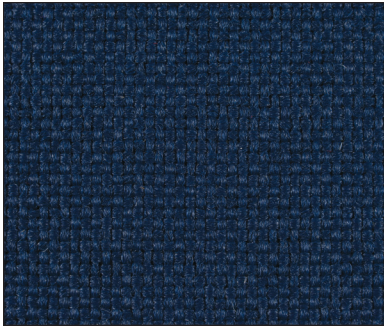


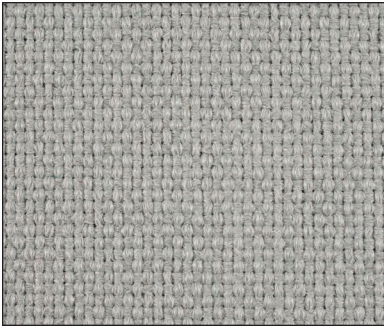
# Standard Fabric Collection



**33** - Nutmeg



**35** - Indigo



**36** - Granite

# Standard Fabric

## Technical Information

---

Tested by an independent laboratory against standards for upholstery fabrics set by the National Association of Furniture Manufacturers. Fabric consists of 100% woven polypropylene.

### Physical Characteristics

Light Fastness	Exceeds 80 hours
Tear Strength	25.2 lbs minimum warp; 24.8 lbs minimum filling
Breaking Strength	100 lbs minimum warp and filling
Abrasion	15,000 double rubs
Flame Retardancy	Flame spread rate of 5 Smoke density factory of 10 Class A standard for wall covering

Tests were conducted in accordance with the provisions of ASTM designation E84-70. Tests are identical to those specified in ANSI #2.5, NFPA #225, UL #723, and UBC #42-1.

Vacuuming or light brushing is recommended to prevent dust and soil build up.

Custom fabrics can be applied to Best-Rite® boards if fabric is supplied. Call for details and upcharge information.

