

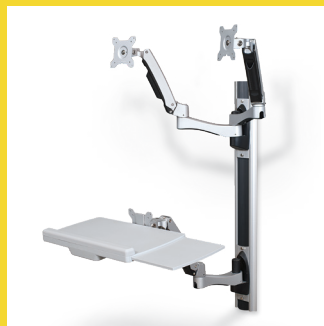


MOORECO™

# HG Wall Mount Workstation



In  
Stock





## HG Wall Mount Workstation

- The HG Wall Mount Workstation is the most versatile "set and forget" wall mount workstation available, featuring a wide range of one-touch adjustments with no buttons, knobs, levers, or switches.
- Use just one hand to adjust tilt, swivel, and pan on each of the arms. Spring-loaded joints ensure the arms stay in place, yet are easily repositionable.
- Ideal for use in medical facilities, warehouses, or other high traffic areas with tight spaces where computer access for multiple operators is needed.
- Includes a single monitor mount and a keyboard arm. Optional second monitor arm and CPU holder available. Accessories slide easily onto the base. You choose where to lock each part into place.
- The dual-jointed adjustable keyboard arm features height adjustment, lateral adjustment, and tilts for ideal positioning. Keyboard tray measures 18.25"W x 10"D and includes a retractable mouse platform (8.5"W x 8.38"D) that can be used on the right or left side.
- Monitor arm accommodates a monitor up to 24"/22 lbs. Dual-jointed arms features swivel, tilt, and pan adjustment. Allows landscape and portrait orientation. VESA compatible mounting.
- Includes cable management channels to keep cords out of your way. Folds to 22.87"W x 7.91"D when not in use.



Part No.	Item	Product Dimensions	Ship Wt.
<b>HG Wall Mount Workstation</b>			
66644*	HG Wall Mount Workstation	34.65"H x 22.87"W x 7.91"D	28 lbs
<b>Optional Accessories</b>			
66646*	Second Monitor Arm	4.53"H x 4.53"W x 16.26"D	5 lbs
66645*	CPU Holder	7.38"H x 9.5"W x 8.63"D	6 lbs

\*Ships UPS. Shipping weights are listed on a per item basis and may vary based on quantities ordered.



**MooreCo | Vanerum North America**  
 2885 Lorraine Avenue | Temple, TX 76501  
 p: 800.749.2258 | f: 866.888.7483  
[www.moorecoinc.com](http://www.moorecoinc.com) | [www.vanerumna.com](http://www.vanerumna.com)