

“HAND ME  
THE MOUNTZ!”



### Mountz FG Precision Preset Torque Screwdriver

## SAFEGUARDING AGAINST FASTENING FAILURES

- Poka-yoke torque screwdriver prevents over-torque
- Accuracy and precision delivered for all fastening applications Unmatched quality you can count on
- Calibration life 4x ISO standards (for the FG-8i, FG-20i, FG-40i & FG-125i models)  
Calibration life 2x ISO standards (for the FG-25z and FG-50z models)
- Two year unlimited warranty
- Lifetime warranty against manufacturer defects



# QUALITY IS AT THE HEART OF EVERYTHING WE DO

Relied on by leaders in aviation, automotive, medical and electronic-all industries in which process control is critical.







## Quality cam-over technology in the palm of your hand

### THE STATE-OF-THE-ART PRECISION TORQUE DRIVER

Engineered and assembled in Silicon Valley, the Mountz FG line of precision preset torque screwdrivers are the most advanced hand tools for high-level process and quality control.

When under- or over-torquing puts your products at risk, Mountz cam-over torque screwdrivers deliver the accuracy you need. Mountz cam-over drivers use an internal cam-over mechanism to reduce the risk of operator error by disengaging once torque is reached. Our cam-over technology increases consistency of torque delivered and joint reliability.

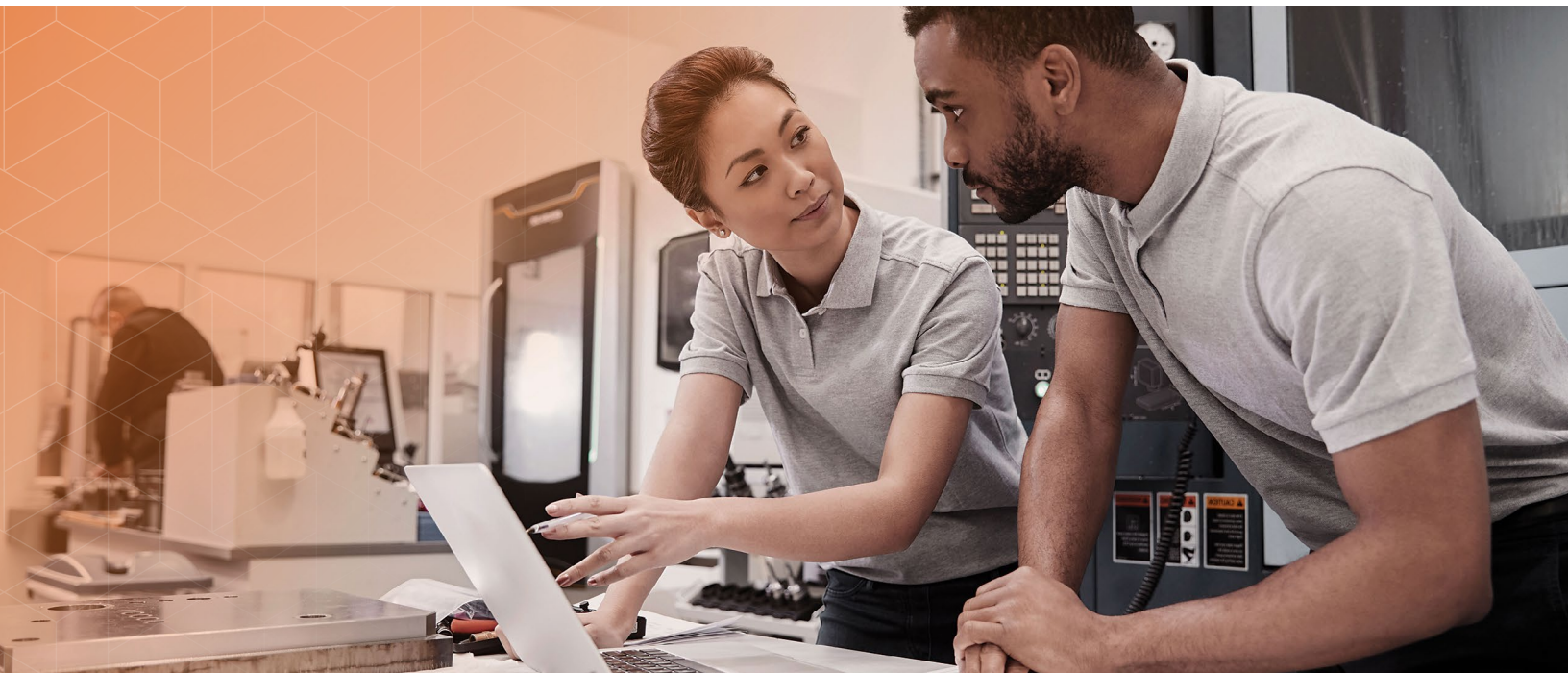
## Precision and accuracy delivered every time

### BREAKTHROUGH ACCURACY AND REPEATABILITY INCREASES OPERATOR CONFIDENCE AND OVERALL QUALITY OF ASSEMBLY

Mountz FG tools stay in calibration 4X longer than the most stringent industry standard (ISO 6789). Engineered with a cam-over mechanism, the poka-yoke screwdriver prevents over torque. You can give Mountz FG tools to any operator and have the confidence that they will deliver the correct torque, time after time.

Our unique bearing system eliminates axial (end) and side loads by the operator, increasing consistency of torque delivered and joint reliability.





## Preset cam-over torque screwdriver improves productivity

Modern, effective preset torque screwdrivers improve productivity by guaranteeing that the correct torque value is consistently applied to each fastener. Preset torque screwdrivers are ideal for fastening applications where operators repeatedly assemble parts at the same torque setting. A preset screwdriver is similar to setting an alarm clock to signal the achievement of a selected time. The screwdriver is pre-set to the application's required torque value. The tool signals once torque is achieved.

A preset screwdriver doesn't have an external torque adjustment scale. These tools have an internal torque adjustment mechanism for setting the torque value and preset using a hex key and a torque analyzer. The locking mechanism prevents accidental torque setting changes. Once the tool is set the screwdriver's end cap is sealed with a calibration sticker and ready to be used. However, if the preset torque value needs to be changed for new fastening application the flexible tool can easily be adjusted to a new preset torque value.

## The last precision torque screwdriver you'll ever need to buy!

We've tested them over millions of cycles in our controlled lab environment and we still can't break them!

### It's why we have an industry-leading warranty.

- Mountz FG tools are the only cam-over drivers on the market to offer a two year unlimited warranty. If it breaks in any way, we'll fix it or replace it for free.
- Lifetime guarantee against manufacturing defects.
- Warranty includes a free calibration within the first year.

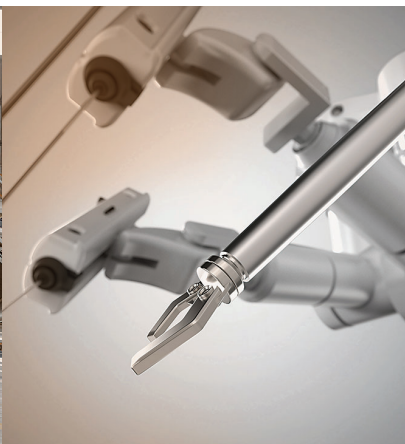


# PRODUCT OVERVIEW

FEATURE	WHAT IS IT?	ADVANTAGE	END USER BENEFIT
Cycles Before Calibration	<ul style="list-style-type: none"> <li>ISO 6789-1:2017 calls for maximum of 5,000 torque applications</li> </ul>	<ul style="list-style-type: none"> <li>Exceeds standards</li> <li>Mountz 4x ISO standards: 20,000 cycles before re-calibration</li> </ul>	<ul style="list-style-type: none"> <li>Longer time on the production line</li> <li>Reduces calibration budget and down time</li> </ul>
Consistency	<ul style="list-style-type: none"> <li>Lifecycle testing of well over 3 million combined torque applications</li> </ul>	<ul style="list-style-type: none"> <li>Confidence every tool meets requirements</li> </ul>	<ul style="list-style-type: none"> <li>Reduces need to replace tools/parts</li> <li>Lower required tool inventory</li> </ul>
Cam-Over Technology	<ul style="list-style-type: none"> <li>Eliminate over-torque</li> <li>Limits the amount of force applied</li> </ul>	<ul style="list-style-type: none"> <li>Eliminates fastener breakage issues</li> <li>Ensures correct torque is applied</li> </ul>	<ul style="list-style-type: none"> <li>Precision and accuracy</li> <li>Error proofing assembly process</li> <li>Safeguards against fastening failures</li> </ul>
Handle Flutes	<ul style="list-style-type: none"> <li>Sleek 4-flute handle design</li> </ul>	<ul style="list-style-type: none"> <li>Ergonomic</li> </ul>	<ul style="list-style-type: none"> <li>Sleek and comfortable</li> <li>Easy to clean</li> </ul>
Needle Thrust Bearing	<ul style="list-style-type: none"> <li>Rotary bearing to allow rotation between parts</li> </ul>	<ul style="list-style-type: none"> <li>Reduces axial load torque dependency</li> <li>Reduces friction influence on tool output</li> <li>Longer life on internal components</li> </ul>	<ul style="list-style-type: none"> <li>Higher accuracy</li> <li>Durability</li> </ul>
Metal End Cap	<ul style="list-style-type: none"> <li>Eliminates possibility of damage to end cap</li> </ul>	<ul style="list-style-type: none"> <li>Durable and doesn't strip out like plastic</li> </ul>	<ul style="list-style-type: none"> <li>Fewer parts need replacement</li> <li>Easier to service</li> </ul>
Bit Retention (Universal Bit Holder)	<ul style="list-style-type: none"> <li>¼ inch female hex bit holder that grips any type of bit</li> <li>Patented One Touch bit release</li> </ul>	<ul style="list-style-type: none"> <li>Safe and secure</li> <li>No band / spring and captive ball to fall out</li> </ul>	<ul style="list-style-type: none"> <li>Better quality and productivity on line</li> <li>Bits don't fall out or into assembly operation</li> </ul>
Locking Mechanism	<ul style="list-style-type: none"> <li>Double locking mechanism to prevent accidental torque setting change</li> </ul>	<ul style="list-style-type: none"> <li>Avoids torque setting drift</li> </ul>	<ul style="list-style-type: none"> <li>Longer period before re-calibration</li> <li>Higher accuracy over time</li> </ul>
Preset Tool	<ul style="list-style-type: none"> <li>Internal torque adjustment mechanism</li> <li>Non-graduated setting torque tool</li> </ul>	<ul style="list-style-type: none"> <li>Tool is set to a designated torque value</li> <li>Correct torque value is consistently applied</li> </ul>	<ul style="list-style-type: none"> <li>Enhance process reliability</li> <li>Improve production quality</li> <li>Increase productivity</li> <li>Reduce scrap rates</li> </ul>

\*Calibration life 4x ISO standards (for the FG-8i, FG-20i, FG-40i & FG-125i models)

\*Calibration life 2x ISO standards (for the FG-25z and FG-50z models)



# MOUNTZ FG PRESET PRECISION HAND SCREWDRIVER LINEUP

MODEL	ITEM NO.	TORQUE RANGES		LABEL COLOR	DRIVE SIZE	LENGTH	WEIGHT
		AMERICAN	S.I.				
FG-25z	076705	3–25 ozf.in	2–17.7 cN.m	Blue	1/4" F/Hex	4.1"	2.8 oz.
FG-25z	076706	3–25 ozf.in	2–17.7 cN.m	Red	1/4" F/Hex	4.1"	2.8 oz.
FG-25z	076707	3–25 ozf.in	2–17.7 cN.m	Green	1/4" F/Hex	4.1"	2.8 oz.
FG-25z	076708	3–25 ozf.in	2–17.7 cN.m	Gold	1/4" F/Hex	4.1"	2.8 oz.
FG-50z	076709	10–50 ozf.in	7.1–35.3 cN.m	Blue	1/4" F/Hex	4.1"	2.8 oz.
FG-50z	076710	10–50 ozf.in	7.1–35.3 cN.m	Red	1/4" F/Hex	4.1"	2.8 oz.
FG-50z	076711	10–50 ozf.in	7.1–35.3 cN.m	Green	1/4" F/Hex	4.1"	2.8 oz.
FG-50z	076712	10–50 ozf.in	7.1–35.3 cN.m	Gold	1/4" F/Hex	4.1"	2.8 oz.
FG-8i	076546	0.8–8 lbf.in	9–90 cN.m	Blue	1/4" F/Hex	5.2"	7.3 oz.
FG-8i	076551	0.8–8 lbf.in	9–90 cN.m	Red	1/4" F/Hex	5.2"	7.3 oz.
FG-8i	076556	0.8–8 lbf.in	9–90 cN.m	Green	1/4" F/Hex	5.2"	7.3 oz.
FG-8i	076561	0.8–8 lbf.in	9–90 cN.m	Gold	1/4" F/Hex	5.2"	7.3 oz.
FG-20i	076547	2–20 lbf.in	22–226 cN.m	Blue	1/4" F/Hex	5.2"	7.3 oz.
FG-20i	076552	2–20 lbf.in	22–226 cN.m	Red	1/4" F/Hex	5.2"	7.3 oz.
FG-20i	076557	2–20 lbf.in	22–226 cN.m	Green	1/4" F/Hex	5.2"	7.3 oz.
FG-20i	076562	2–20 lbf.in	22–226 cN.m	Gold	1/4" F/Hex	5.2"	7.3 oz.
FG-40i*	076548	4–40 lbf.in	0.4–4.5 N.m	Blue	1/4" F/Hex	6.3"	11.5 oz.
FG-40i*	076553	4–40 lbf.in	0.4–4.5 N.m	Red	1/4" F/Hex	6.3"	11.5 oz.
FG-40i*	076558	4–40 lbf.in	0.4–4.5 N.m	Green	1/4" F/Hex	6.3"	11.5 oz.
FG-40i*	076563	4–40 lbf.in	0.4–4.5 N.m	Gold	1/4" F/Hex	6.3"	11.5 oz.
FG-125i*	076549	25–125 lbf.in	2.8–14.1 N.m	Blue	1/4" F/Hex	6.3"	11.5 oz.
FG-125i*	076554	25–125 lbf.in	2.8–14.1 N.m	Red	1/4" F/Hex	6.3"	11.5 oz.
FG-125i*	076559	25–125 lbf.in	2.8–14.1 N.m	Green	1/4" F/Hex	6.3"	11.5 oz.
FG-125i*	076564	25–125 lbf.in	2.8–14.1 N.m	Gold	1/4" F/Hex	6.3"	11.5 oz.

Designed and manufactured to meet or exceed the accuracy and repeatability requirements of ISO 6789: 2017 (+/- 6% of setting).

Color coding labels allows for torque setting identification in manufacturing area.

\*A removable, sliding T-bar is supplied with FG-40i and FG-125i models.



Tamper-proof internal adjustment. No external adjustment scale—must be preset using a torque analyzer.

# MOUNTZ FG-OWC PRESET PRECISION HAND SCREWDRIVER LINEUP

MODEL	ITEM NO.	TORQUE RANGES		LABEL COLOR	DRIVE SIZE	LENGTH	WEIGHT
		AMERICAN	S.I.				
FG-8i OWC	076586	0.8–8 lbf.in	9–90 cN.m	Blue	1/4" F/Hex	5.2"	7.3 oz.
FG-8i OWC	076591	0.8–8 lbf.in	9–90 cN.m	Red	1/4" F/Hex	5.2"	7.3 oz.
FG-8i OWC	076596	0.8–8 lbf.in	9–90 cN.m	Green	1/4" F/Hex	5.2"	7.3 oz.
FG-8i OWC	076601	0.8–8 lbf.in	9–90 cN.m	Gold	1/4" F/Hex	5.2"	7.3 oz.
FG-20i OWC	076587	2–20 lbf.in	22–226 cN.m	Blue	1/4" F/Hex	5.2"	7.3 oz.
FG-20i OWC	076592	2–20 lbf.in	22–226 cN.m	Red	1/4" F/Hex	5.2"	7.3 oz.
FG-20i OWC	076597	2–20 lbf.in	22–226 cN.m	Green	1/4" F/Hex	5.2"	7.3 oz.
FG-20i OWC	076602	2–20 lbf.in	22–226 cN.m	Gold	1/4" F/Hex	5.2"	7.3 oz.
FG-40i OWC**	076588	4–40 lbf.in	0.4–4.5 N.m	Blue	1/4" F/Hex	6.3"	11.5 oz.
FG-40i OWC**	076593	4–40 lbf.in	0.4–4.5 N.m	Red	1/4" F/Hex	6.3"	11.5 oz.
FG-40i OWC**	076598	4–40 lbf.in	0.4–4.5 N.m	Green	1/4" F/Hex	6.3"	11.5 oz.
FG-40i OWC**	076603	4–40 lbf.in	0.4–4.5 N.m	Gold	1/4" F/Hex	6.3"	11.5 oz.
FG-125i OWC**	076589	25–125 lbf.in	2.8–14.1 N.m	Blue	1/4" F/Hex	6.3"	11.5 oz.
FG-125i OWC**	076594	25–125 lbf.in	2.8–14.1 N.m	Red	1/4" F/Hex	6.3"	11.5 oz.
FG-125i OWC**	076599	25–125 lbf.in	2.8–14.1 N.m	Green	1/4" F/Hex	6.3"	11.5 oz.
FG-125i OWC**	076604	25–125 lbf.in	2.8–14.1 N.m	Gold	1/4" F/Hex	6.3"	11.5 oz.

## FG-OWC (ONE WAY-CLUTCH)

A one-way torque clutch system is designed to apply torque in one direction and remains positive (no torque control) in the opposite direction. This allows the tool to be used for easy screw removal. Ideal for maintenance and refurbishing applications and where undoing or loosening screws is required.

Screwdriver is torque limiting and calibrated in the CW direction only

Designed and manufactured to meet or exceed the accuracy and repeatability requirements of ISO 6789: 2017 (+/- 6% of setting).

Color coding labels allows for torque setting identification in manufacturing area.



\*\*A removable, sliding T-bar is supplied with FG-40i OWC and FG-125i OWC models.



Tamper-proof internal adjustment. No external adjustment scale—must be preset using a torque analyzer.

# MOUNTZ FG-IFR PRESET PRECISION HAND SCREWDRIVER LINEUP

MODEL	ITEM NO.	TORQUE RANGES		LABEL COLOR	DRIVE SIZE	LENGTH	WEIGHT
		AMERICAN	S.I.				
FG-8i IFR	076651	0.8–8 lbf.in	9–90 cN.m	Blue	1/4" F/Hex	5.2"	7.3 oz.
FG-8i IFR	076656	0.8–8 lbf.in	9–90 cN.m	Red	1/4" F/Hex	5.2"	7.3 oz.
FG-8i IFR	076661	0.8–8 lbf.in	9–90 cN.m	Green	1/4" F/Hex	5.2"	7.3 oz.
FG-8i IFR	076666	0.8–8 lbf.in	9–90 cN.m	Gold	1/4" F/Hex	5.2"	7.3 oz.
FG-20i IFR	076652	2–20 lbf.in	22–226 cN.m	Blue	1/4" F/Hex	5.2"	7.3 oz.
FG-20i IFR	076657	2–20 lbf.in	22–226 cN.m	Red	1/4" F/Hex	5.2"	7.3 oz.
FG-20i IFR	076662	2–20 lbf.in	22–226 cN.m	Green	1/4" F/Hex	5.2"	7.3 oz.
FG-20i IFR	076667	2–20 lbf.in	22–226 cN.m	Gold	1/4" F/Hex	5.2"	7.3 oz.
FG-40i IFR***	076653	4–40 lbf.in	0.4–4.5 N.m	Blue	1/4" F/Hex	6.3"	11.5 oz.
FG-40i IFR***	076658	4–40 lbf.in	0.4–4.5 N.m	Red	1/4" F/Hex	6.3"	11.5 oz.
FG-40i IFR***	076663	4–40 lbf.in	0.4–4.5 N.m	Green	1/4" F/Hex	6.3"	11.5 oz.
FG-40i IFR***	076668	4–40 lbf.in	0.4–4.5 N.m	Gold	1/4" F/Hex	6.3"	11.5 oz.
FG-125i IFR***	076654	25–125 lbf.in	2.8–14.1 N.m	Blue	1/4" F/Hex	6.3"	11.5 oz.
FG-125i IFR***	076659	25–125 lbf.in	2.8–14.1 N.m	Red	1/4" F/Hex	6.3"	11.5 oz.
FG-125i IFR***	076664	25–125 lbf.in	2.8–14.1 N.m	Green	1/4" F/Hex	6.3"	11.5 oz.
FG-125i IFR***	076669	25–125 lbf.in	2.8–14.1 N.m	Gold	1/4" F/Hex	6.3"	11.5 oz.

## FG-IFR (IMPACT FREE RESETTING)

The FG screwdrivers' design action is such that when the tool reaches its pre-set torque value, the mechanism disengages from the drive, limiting the torque. Further rotation of the screwdriver handle resets the mechanism, ready for the next torquing operation. The FG-IFR models eliminate any slight reaction during resetting.

Designed and manufactured to meet or exceed the accuracy and repeatability requirements of ISO 6789: 2017 (+/- 6% of setting).

Color coding labels allows for torque setting identification in manufacturing area.

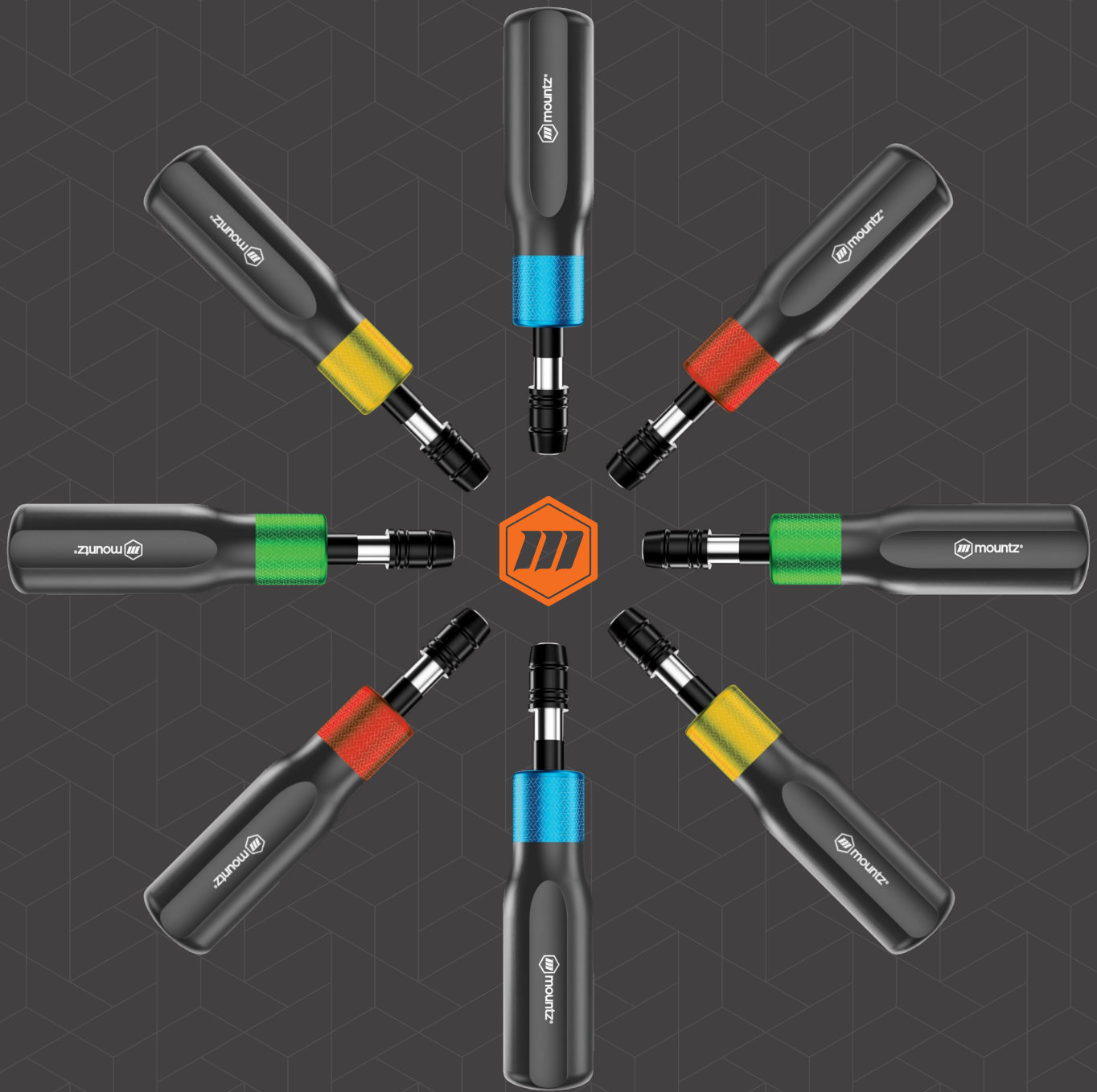


\*\*\*A removable, sliding T-bar is supplied with FG-40i and FG-125i IFR models.



Tamper-proof internal adjustment. No external adjustment scale—must be preset using a torque analyzer.





At Muntz, we take great pride in knowing that our advanced torque tools will end up in the right hands.



#### ABOUT MOUNTZ

Mountz, The Torque Tool Specialists®, has been a leader in the torque tool industry for more than 50 years. Engineered in the Silicon Valley and serving the globe, Mountz focuses on delivering high-quality torque products, services, and solutions to ensure customers can always proceed with confidence. We are committed to forging a safer world through precision and accuracy, and by innovating every day.



[mountztorque.com](http://mountztorque.com)

#### SILICON VALLEY HEADQUARTERS AND SERVICE CENTER

1080 N. 11th St., San Jose, CA 95112  
408-292-2214 / M-F 6am-5pm PST

#### ALABAMA DISTRIBUTION AND SERVICE CENTER

19051 Underwood Road, Foley, AL 36535

#### INTERNATIONAL

For inquiries outside of the USA,  
Canada, and Mexico, please contact:  
[international@mountztorque.com](mailto:international@mountztorque.com)  
Phone: +44 1428 741756