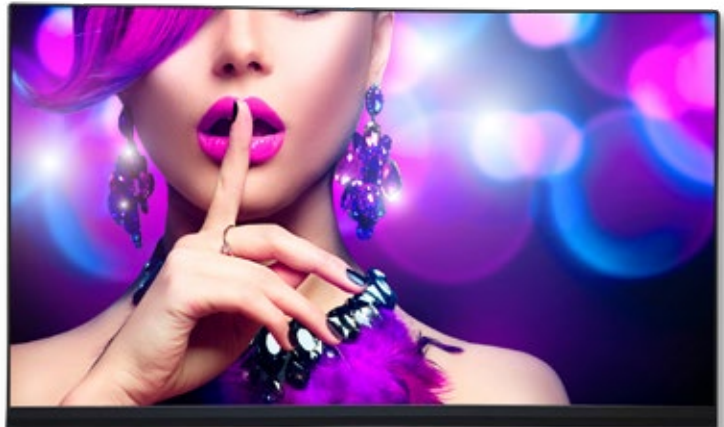


LED-FA019i2-165

165" Indoor LED 1.90mm Full HD Bundle

Datasheet



Nothing less than magnificent

For premium large surface visualization, NEC's fine pitch LED FA Series bundles provide standard resolution, direct view LED screens for applications in meeting spaces and exclusive signage. With a depth of just 3.2in., plus complete internal cabling, the FA series presents a sleek profile for a bezel-free viewing experience. With excellent viewing angles, consistent vibrant colors and superb brightness; the FA Series delivers content that gets noticed. This Full HD bundle is designed for viewing from 4ft to an optimal 10ft and includes everything required to install an LED wall, including a power bar, framing, mounting and controller. Designed with high quality components and maintenance access from the front, the FA Series provides a display solution with longevity and good return on investment. The FA Series bundles are the prime solution for boardrooms, auditoriums, luxury retail environments and control rooms.

Benefits

16:9 Aspect Ratio – enabling standard Full HD content to be utilized, saving time and cost in content creation.

Quality product – designed and tested in Germany, LED fine pitch product of the highest quality.

Ultimate Versatility – small 16:9 modules allowing excellent flexibility within the available space.

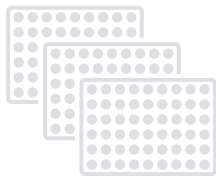
Secure Investment – the intelligent cabinet design allows for upgrade to higher resolutions.

Excellent Homogeneity – uniform color and brightness across the entire wall.

Outstanding Picture Quality – through the use of Multi-Color LEDs.

Direct View LED Kit		LED-FA019i2
DISPLAY	Panel Technology	Direct View LED
	Pixel Configuration	3-1 SMD (Black)
	Panel Resolution	1920 x 1080
	Aspect Ratio	16:9
	Pixel Pitch	1.9mm
	Brightness (typical)	800cd/m ²
	Contrast Ratio (typical)	5000:1
	Viewing Angle (typical)	85/85 horizontal / 85/85 vertical
	Dimming Capability	256 levels
	Color Processing	Up to 16 bit
	Displayable Colors	281 Trillion
	Refresh Rate	Up to 3840 Hz
	Lifetime	100,000 hours
CONNECTIVITY	Input Terminals Digital	1 x 3G SDI; 1 x DVI-D; 1 x HDMI
	External Control	1 x GenLock; 1 x LAN
POWER CONSUMPTION	On (typical)	2052 Watts
	Max	4500 Watts
PHYSICAL SPECIFICATIONS	Dimensions (W x H x D)	145.2 x 85.5 x 3.2in / 3688 x 2172 x 81mm
	Weight (Net)	828.8lbs / 400.4kg
ENVIRONMENTAL CONDITIONS	Operating Temperature	-4° to 104°F / -20° to 40°C
	Operating Humidity	10% to 80%
	Storage Temperature	-4° to 113°F / -20° to 45°C
	Storage Humidity	10% to 85%
	IP Rating	IP20
SHIPS WITH	2x LED Controller, LED Modules (36 Cabinets, 288 Pixel Cards), Overframe Kit (6x6), Pixel Card Removal Tool, Power Bar; Spare Parts Kit, Wall mount (6x6)	
LIMITED WARRANTY	3 years	

Every bundle ships with



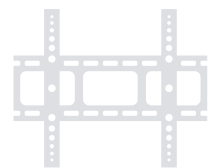
LED Modules



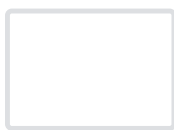
Power Bar



Spare Parts



Wallmount



Overframe



Pixel Card Removal Tool



Redundant Controllers

Sharp NEC Display Solutions of America

www.sharpeddisplays.us