

WHICH NEC DVLED SOLUTION IS RIGHT FOR YOUR BUSINESS?

With a 170° viewing angle, our LED displays mean your content can be viewed from almost any vantage point - indoors or outdoors, close-up or far away.

Whether you need a solution for your retail premises, sports stadium or control room, here's how to decide which NEC solution offers your perfect view.



I need a display that's flexible enough to scale or be installed in a variety of settings.

All NEC solutions offer flexible display options, depending on the environment you need them to operate in. For example, **FE and FA series** displays deliver an ultra-fine pitch that can scale to fit your indoor needs, whether that's an alcove, a wall or hanging from a truss.

Our **A Series** brings a different type of flexibility to indoor settings: mobility and the ability to string together for a quick, easy-to-expand series carrying your message across multiple screens.

The **Q Series** offers even more installation possibilities: indoor *or* outdoor options and durability without compromising on brightness - in situations where you're not looking for the ultra-fine pitch quality of the FA series.



I need exceptional color accuracy to reflect my brand. Which solution should I choose?

Show your true colors with NEC's **FA dvLED**. It uses Multi-Color™ LED technology to deliver the ultimate color performance. Rebroadcast images are true to life and match your specific brand colors perfectly.

Like the FA series, NEC's **FE dvLED** offers 281 trillion displayable colors and up to 16-bit color processing for superb color in a more cost-effective solution.

For outdoor settings, or even in indoor situations where you're looking for a greater viewing distance without compromising on color performance, our **Q Series** offers the same Multi-Color LED technology and results.



Which solution performs best in bright sunlight or bright ambient light?

Take your place in the sun with **NEC's FA or Q series**. The exceptional brightness and scalability of our **FA dvLED** means it really stands out in indoor settings with high ambient or natural light, where you still need high resolution.

Our **Q series** is ideal for distance viewing in outdoor or arena-type settings, where bright natural light or stadium lights won't drown out the crystal-clear, bright imagery. Because the pixel density of the Q series is wider, it's a cost-effective solution where fine pixel pitch isn't needed.



I need a solution I can move around and set up easily.

The **A or "poster" series** is perfect for anyone looking for a flexible, mobile solution. They're fixed-sized posters that come with their own stand and media player, so you can set them up anywhere, as needed. It's easy to install and use in a variety of indoor settings. Pop it up as a stand-alone display or use the wall mount and hardware for hanging. Simply pack up and move as needed. And because they're individual banners, you can easily chain multiples together for a really simple-yet-effective, flexible display.



I need 24/7 uptime, without compromising on quality or flexibility. Which option should I choose?

NEC's FA series provides always-on performance for always-on businesses. Built-in redundant power supply units and receiving cards mean there's an automatic backup for power *and* data if anything goes wrong - this is crucial in mission-critical environments, such as situational awareness settings, where downtime can have far-reaching consequences. For corporate users, it's as simple as always putting your best foot forward - no downtime, just your best content all the time.





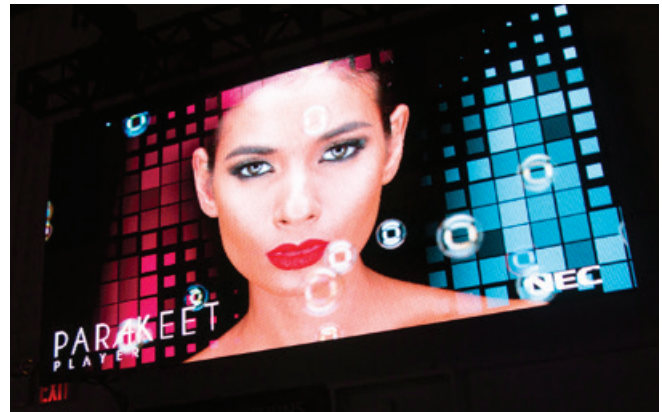
I need to avoid the “caterpillar effect.” I need my display to keep working even if one LED fails.

Both the Q and FA series use Multi-Color LEDs, which will continue to function even if an adjacent LED malfunctions — you can avoid the effect you often see with Christmas tree lights, where if one bulb fails, the line of pixels goes with it.



This display is for an outdoor setting. What do I choose?

The **Q series** display is perfect for outdoor use. Its wider pixel density makes it ideal for distance viewing outdoors - and its **IP65 rating** means the weather never spoils the view. Whether it's dust or rain, the Q Series can stand up to it.



I'm looking for a ready-to-go solution. What are my options?

NEC's **FE and FA Kits** provide all you need for a simplified LED solution and include installation as standard. The **A Series** posters are easy to set up and move around without any installation needed. Sharp/NEC's experts will plan, install and calibrate your solution to ensure you get the optimal results from your investment. You can be sure you have your high-quality display solution working to the manufacturer's best standards, every time. Take this to the next level with a kitted solution, combining expert planning and installation with everything else you need, from mounting and overframe kit to spare parts and controllers.

Learn how Sharp/NEC gives you the display you deserve.

www.sharpnecdisplays.us