

Datasheet: ASE Model 807-420-SM SKU 02244 Part Number 4324448

Key Features:

- Supports TruView™ and Visual Performance Manager™
- Supports IP Transport firmware
- Supports PoS link layer data on SONET and SDH lines
- Supports both OC-3c (STM-1) and OC-12c (STM-4) speeds
- Supports PPP, Frame Relay, HDLC, and MLPPP encapsulations
- Capable of Inline placement with MSP certified fail to fiber
- Last mile keep alive upon CPE Router failure provides 100% availability and fault isolation on the local loop, access layer
- Configurable to support IPV4 or IPV6 management and monitoring
- Inband and LAN management capable
- Pro-active real time SNMP events with event forwarding
- Supports SLA injection over LAN via Ethernet port
- CoS and VLAN validation
- Continuous 1 second monitoring with burst analysis
- Layer 1 through 7 auto-detection and analysis
- Application analysis capability with Server Connect and Server Response time metrics and alarms
- Voice over IP (VoIP) analysis capability with 5,000 concurrent call analysis and per call MoS scores
- 4096 site to site SLA metrics per CoS for round trip delay, availability, and packet delivery ratio
- Rogue application discovery
- On demand remote packet capture when required
- Capable of exporting NetFlow v9

The TruView and Visual Performance Manager Packet over Sonet OC-3c/12c single inline ASE enhances the analysis functionality of optical networks. The Analysis Service Element (ASE) provides OC-3c and OC-12c support for future upgrades of detailed network traffic analysis and management, while maintaining full wire speed pass-through of all traffic. It supports IP convergence of bandwidth, applications, burst, and VOIP data traffic.



PoS, Optical SFP, Single Inline OC-3c/12c ASE front view

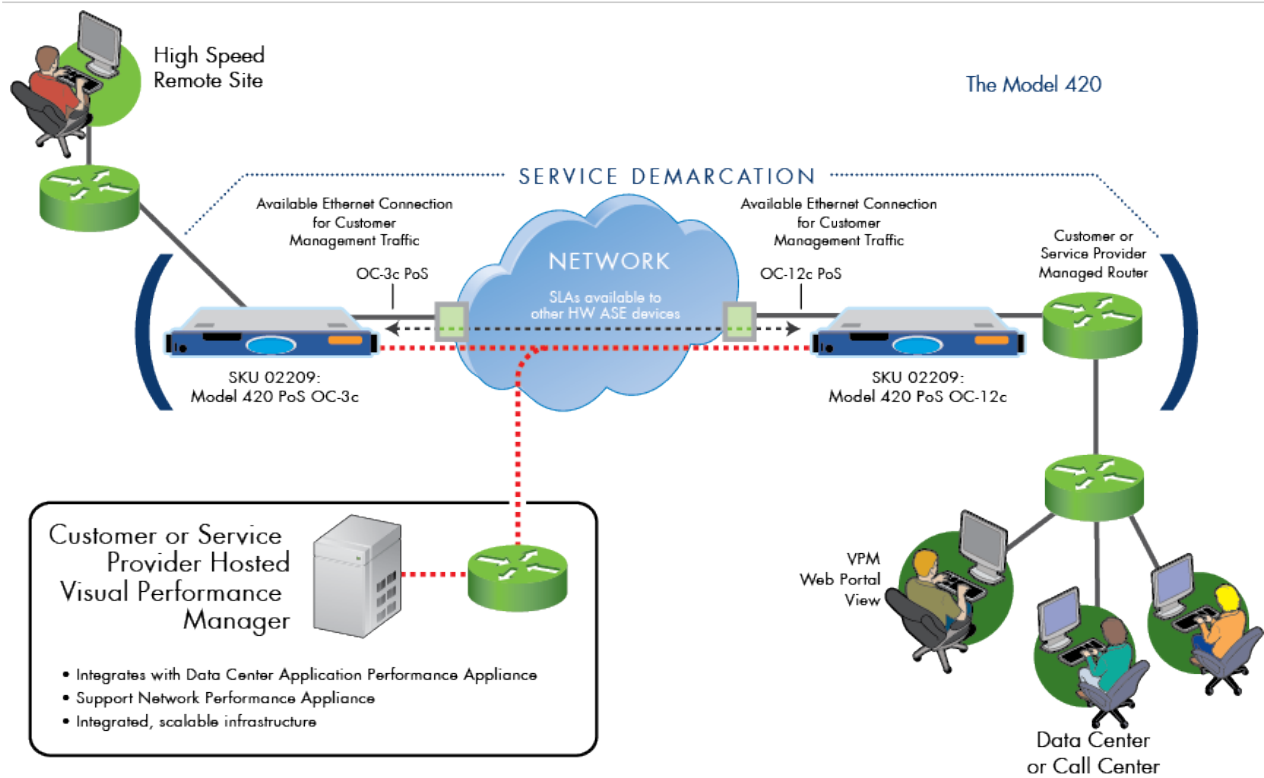


PoS, Optical SFP, Single Inline OC-3c/12c ASE rear view

The PoS OC-3c/12c ASE is deployed on the WAN side of the customer edge router for true access line monitoring. The high speed ASE is designed to display traffic to or from the WAN, allowing for segmentation troubleshooting between the network and the applications at the data center, while identifying local loop errors or service provider long haul issues.

NetFlow export probe

An ASE is designed to analyze IP packets flowing across a Ethernet Link. The unit can be installed inline between the customer edge and the provider edge router. The ASE normally stores observations for later download to the VPM server or TruView appliance while always providing continuous monitoring of the network in real time. However, the device can also export observations via NetFlow version 9 to any collector desired.



PoS, Single Mode OC-3c/12c ASE Model 807-0420-SM SKU 02244 Part Number 4324448

Description

PoS, Optical SFP, Single Inline OC-3c/12c ASE

General

| | |
|---------------|--|
| Dimensions | 1.66" H x 17.09" W x 15.52" D (in) 42.4 H x 434.0 W x 394.3 D (mm) |
| Weight | Chassis: 15.5 lbs (7.03 kgs) |
| Max Data Rate | OC-3c (155.52 Mbps) and OC-12c (622.08 Mbps) |
| Timing Mode | Derived externally from the network. |

Environment

| | |
|-----------------------|-------------------------------|
| Operating Temperature | 0° to +40°C (+32° to +104°F) |
| Storage Temperature | -20° to -55°C (-4° to +131°F) |

Power Requirements

| | |
|----------------------|------------------------------------|
| Input | 220 watts, 100 – 240V, 50-60 Hz |
| Input Current Rating | 5 amps |

Network Interface

| | |
|-------------------------|---|
| Line Rate | OC-3c (155.52 Mbps) and OC-12c (622.08 Mbps) |
| Line Mode | SONET or SDH |
| Payload Scrambler | Uses the X ⁴³⁺¹ algorithm |
| Connectors | SFP |
| Wavelength | 1310 nm |
| Tx Average Output Power | -11 dBm |
| Rx Sensitivity | -28 dBm |

Serial Port Interface

| | |
|-------------------|-------------------------------|
| Baud Rate | 0° to +40°C (+32° to +104°F) |
| Parity | -20° to -55°C (-4° to +131°F) |
| Stop Bit | 1 stop bit |
| Electrical Format | EIA RS-232, DTE |
| Connector | 9-pin D, male per EIA-574 |

Ethernet 100/1000 Base-T Interface

| | |
|-----------|---------------------------|
| Bit Rate | 100/1000 Mbps |
| Connector | 8-pin modular jack: RJ-45 |

Compliance

Compliant with Bellcore GR-253, ITE G.957 standards.

Complies with Telcordia GR-253-CORE jitter tolerance, jitter transfer and intrinsic jitter.

What are ASEs?

ASEs (Analysis Service Elements) are data collection and network performance monitoring hardware devices placed on a wide area network (WAN) or Local Area Network (LAN) as part of the TruView and Visual Performance Manager systems. ASEs offer in-depth, real-time, and historical visibility into the performance of an applications infrastructure. Data gathered by ASEs is stored in the VPM server and displayed and analyzed from the Web portal interface.

As a service level management tool, ASEs indicate when services are being met, provide warnings when services start to degrade, and send alerts when services are not met.

What is TruView and Visual Performance Manager?

TruView and Visual Performance Manager are flexible solutions that can scale to help the largest enterprises, carriers and managed service providers decrease the cost of performance management, increase revenue, and optimize utilization of existing assets. This is accomplished by enabling IT organizations to become a source of competitive advantage, not a cost center, by providing actionable visibility into a centralized integration point for managing applications, VoIP network and server performance across a complete network.

Hardware Support

Enhanced ASE hardware warranty service programs are available to help you maximize your investment in TruView and Visual Performance Manager. For more detailed warranty information, visit www.netscout.com.

02244 Gold Support:

GLD-01956 - Gold ASE hardware maintenance 4 hr exchange w/ tech-group 4

GLD-02173 - Gold ASE hardware maintenance 1 day exchange w/ tech-group 5

GLD3-02232 - 3 yr Gold ASE HW maintenance 4 hr exchange w/ tech-group 4

GLD3-02173 - 3 yr Gold HW maintenance - appliance based ethernet ASE

Software Maintenance

Each hardware ASE is managed remotely by the TruView or Visual Performance Manager. Maintenance is dependent on the software module purchased. For more detailed maintenance information, visit Inside Sales at the number below.

Professional Services

Professional services are available for installing, maintaining and customizing your solution your ASE hardware and TruView and Visual Performance Manager solution. Replacing the hardware on site with or without a technician is offered worldwide. For more detailed professional services information, visit www.netscout.com/professionalservices.

Ordering information

For more details, please visit www.netscout.com.

PoS, Single Mode OC-3c/12c with Inline capabilities