



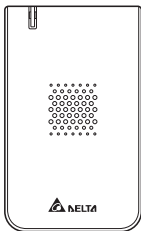
NovoConnect B360 Series

Wireless Presentation & Collaboration System

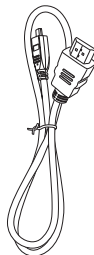
Quick Start Guide



Package Contents



(a) B360 main unit



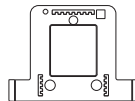
(b) Micro-HDMI-to-HDMI cable



(c) Micro-USB-to-USB power cable

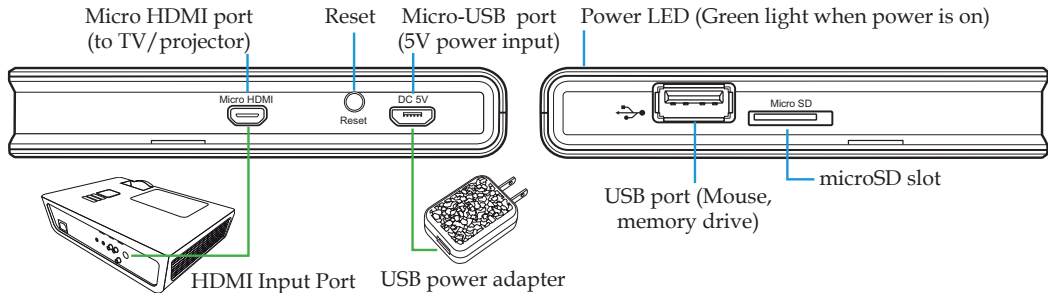


(d) USB power adapter



(e) Mounting Kit

Your NovoConnect B360



Connecting Your B360

1. Video/Audio connection: Connect the HDMI ports to the display with item **(b)** (Micro-HDMI-to-HDMI cable).
2. Power input: Connect to the USB power adapter (items **(c)** and **(d)**).

Note: Throughout this manual, your NovoConnect B360 device will be referred to as *NovoConnect*.

Note: You may connect an optional USB mouse, or a USB drive to the USB port.

Note: The microSD slot supports microSD cards up to 32 GB, FAT32 and NTFS file formats.

Software Download and Installation



Your NovoConnect will power up and display its home screen (shown in the left) once it is properly connected. Follow the on-screen Setup Guide steps to set up your PC or mobile devices:

4 Select the Application Edition (optional)

Connect a USB mouse to your NovoConnect. Click on the “Edition” field to set the NovoConnect to either Education Edition or Corporate Edition.

1 Wi-Fi

Connect your PC to the WiFi network shown on the home screen (e.g. NVC_F4D5A).

2 Installation

Windows/Mac: Open the URL with a web browser to download the “Desktop Streamer” software.

iPad/Android: Download the NovoPresenter app from the respective App store.

(More details are provided in the next page.)

3 Connect

Windows/Mac: Launch “Desktop Streamer” and enter the IP/PIN info displayed when prompted.

iPad/Android: Launch “NovoPresenter” and scan the QR code or enter the IP/PIN info displayed when prompted.

Software Download and Installation (continued)

For Windows and Mac computers

Once you open the download webpage (for example, <http://192.168.43.1:8080> in the sample home screen), select the OS type and start the download and installation process for “Desktop Streamer”

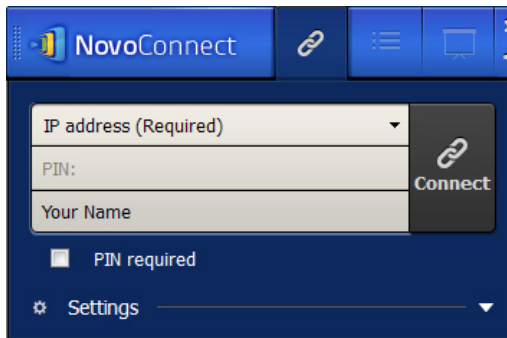
For Android and iOS tablets

Download and install the App “NovoPresenter” from Google Play or iOS App Store.

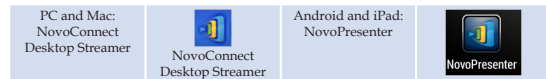


Managing a Presentation


Launching a Presentation



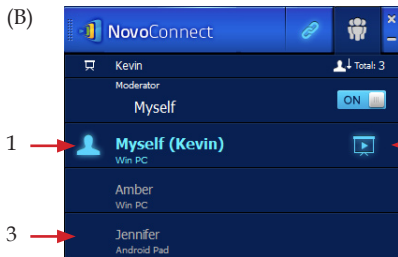
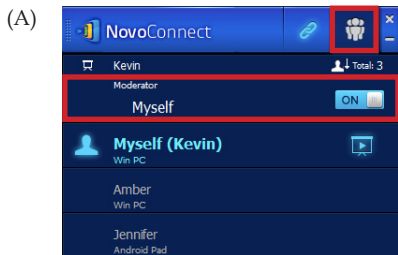
After installing the software, you will find the following presentation application on the desktop of your PC, Mac or tablet.



Start the application to launch the control panel (shown on the left). Follow the steps below to start or join a presentation group:

1. **IP address** Enter the IP address shown on the **(Required):** NovoConnect home screen.
2. **PIN** Check the “PIN required” box and **(optional):** enter PIN if needed.
3. **Your Name** Enter your name which will be **(optional):** displayed in the presentation group.
4. Click  to start or join the presentation group.

Managing a Presentation (continued)



Moderator Mode Switch (Corporate Edition Only)*

Click to display all participants in your presentation group. A moderator On-Off switch allows you to toggle between the following two states:

- Moderator-On: This presentation session is hosted by the designated moderator.
- Moderator-Off: Any participant can control this presentation session.

* *Education Edition is fixed to Moderator-On Mode.*

Roles in a Presentation Session

The role and status of each participant is indicated by the following icons.

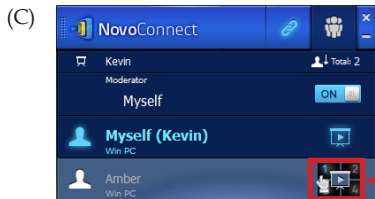
1. Moderator

- For Corporate Edition, the moderator is the participant who turns on the Moderator Mode.
- For Education Edition, the moderator is the first participant that joins this session.


2. Presenter

3. Participant

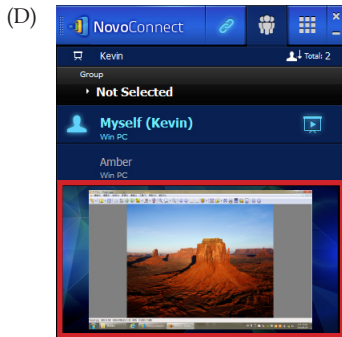
Managing a Presentation (continued)



Assigning a Presenter & 4-Way Split Screen Presentation

- Click  to assign a participant as the presenter*. A request for approval will appear on the screen of this participant.
- Click a numbered box to assign a participant to screen #1-#4 in a 4-way split screen*. A request for approval will appear on the screen of this participant.

* In Moderator-On mode, this capability is only available to the moderator.

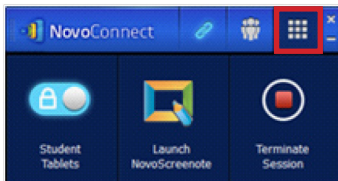


Screen Preview (Education Edition Only)

Click on a participant to preview the participant's screen. (Only the moderator can do so.)

Managing a Presentation (continued)

(E)

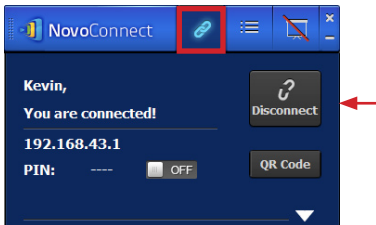


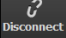
Education Tools (Education Edition Only)

Click  to access various tools:

- *Student Tablets* - Locks or unlocks the student tablets. Locking prevents participants from using their tablets.
- *Launch NovoScreenote* - Launches the screen annotation software, NovoScreenote. (This software needs to be installed separately).
- *Terminate Session* - Disconnect all connected devices.

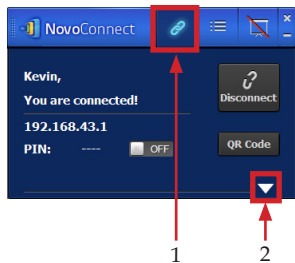
(F)



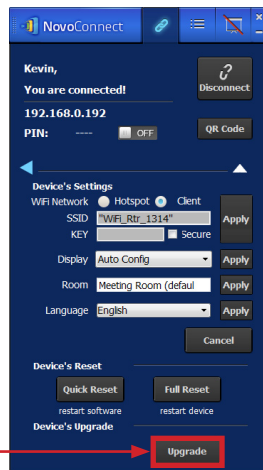
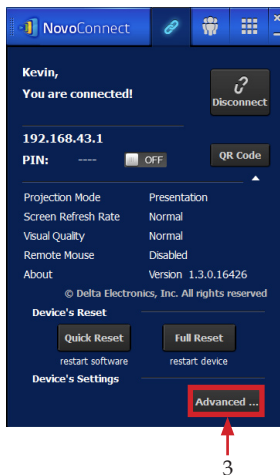
Click the Connection tab and click  to leave the presentation group.

Online Firmware Upgrade

You can upgrade your NovoConnect device firmware when a new version is available. Please make sure your NovoConnect device is connected to the Internet. Then follow the steps below.



1. Click the Connection tab.
2. Click the ▾ tab.
3. Click **Advanced ...**.
4. Click **Upgrade**.



For More Information

Please refer to the NovoConnect user manual for more information on all the features and tools available. Here is a quick list of topics in the user manual useful in making an effective presentation:

- MS, PDF, and Photo document presentations
- Annotation Tools for tablets and PCs
- Browser-based content presentations
- microSD card-based document presentations
- Resetting a presentation session
- Display parameters configuration
- Wi-Fi setup

Please go to the following site to download the B360 User Manual and to view the most up-to-date product information:

www.deltaww.com/EduSolution

Windows is a registered trademark of Microsoft Corporation in the United States and other countries.

Android is a trademark of Google Inc.

Mac and iPad are trademarks of Apple Inc., registered in the U.S. and other countries.

iOS is a trademark or registered trademark of Cisco in the U.S. and other countries and is used under license.



Taiwan

Delta Electronics Inc. Education Solutions and Service Department
186, Ruey Kuang Road, Neihu, Taipei
11491, Taiwan R.O.C.
T +886-2-87519506 / F +886-2-8797-2120

www.deltaww.com