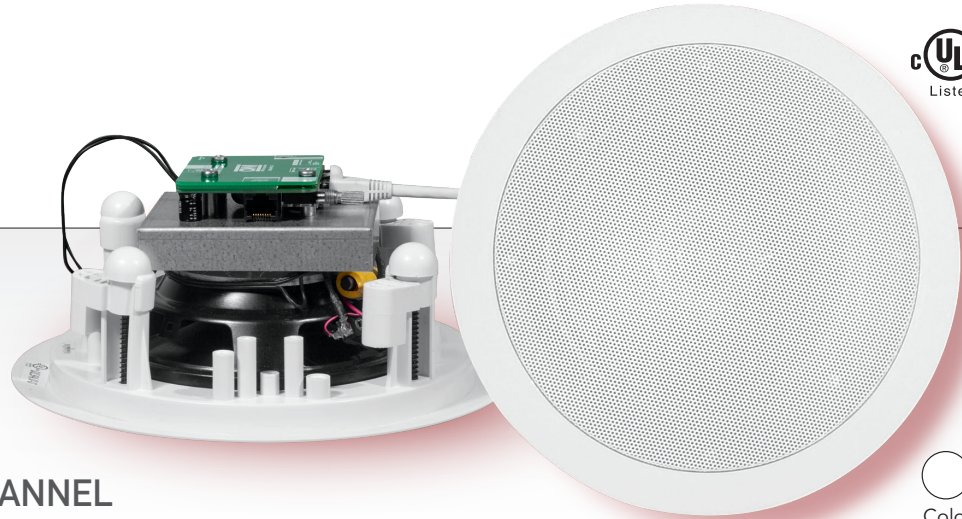
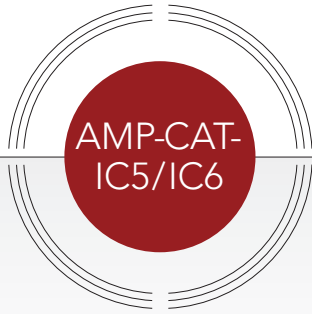


**NEW**



# SELF POWERED, SINGLE CHANNEL IN-CEILING SPEAKER/AMPLIFIER

## Features:

- 1 Audio Input
  - » Stereo 3.5 Mini Jack Line Input
  - » Proprietary Cat5 Input (OWI Products)
- Perfect for Classroom or Conference Room Applications
- Priority Override
- Paging (POP)
  - » POP Trigger Level
  - » POP Volume Level
- Power Supply, UL Listed, Level V, (Energy Star)



- 2x2 Full Grill or 2x2 Metal Tile Options

## Specifications:

MODEL NUMBER	AMP-CAT-IC5	AMP-CAT-IC6
Description	5.25", 2-way, coaxial	6.5", 2-way, coaxial
Indoor	Yes	Yes
Frequency Response	80 Hz - 20 kHz	80 Hz - 20 kHz
Crossover	5 kHz	5 kHz
Dispersion	120°	120°
Max Power (8 Ω)	20 W	20 W
Nominal Power (8 Ω)	20 W	20 W
Woofer Size	5.25"	6.5"
Woofer Material	Paper, PP coated	Paper, PP coated
Tweeter Size	0.5"	0.5"
Tweeter Material	PEI	PEI
Grill Material	Aluminum	Aluminum
Overall Dimensions (D x H - Inches)	7.95" x 3.15"	8.93" x 3.58"
Cut Out Size (Diameter - Inches)	6.61"	7.68"
Weight	2.26 Lbs.	2.96 Lbs.
Mounting Hardware	Mounting Clamps	Mounting Clamps
Covered Outdoor	Yes	Yes
Paintable	Yes	Yes
Color	White	White

ELECTRICAL AMPLIFIER	
Input Voltage, Nominal	16 V DC (16.5 Watts)
Input Current, Operating, (15 V DC)	1 Amp RMS
Input Volt-Amperes, (15 V DC)	15 V Amps RMS

FREQUENCY RESPONSE	
EQ Set to Flat	± 0.7 dB
Bass	±10 dB
Treble	±12 dB
THD + Noise	>0.02 ("A" Weighted)
S/N	>79 dB
Max Power Output	12 W @ 1%
Min. Input Impedance, RJ45 In	30,000 Ω
Min. Input Impedance, Mini-Jack	1,000 Ω
DC Power, Standby	1.4 W
AC Power, Sleep Mode	1.4 W

DC POWER	
Short Circuit Protected	Yes
Over Current Protected	Yes
Over Voltage Protected	Yes
Over Temperature Protected	Yes
Min. Load Impedance	4.0 Ω (Two 8 Ω Speakers in Parallel)
Min. Input Impedance, RJ45 In	150,000 Ω
Min. Input Impedance, Mini-Jack	37,000 Ω



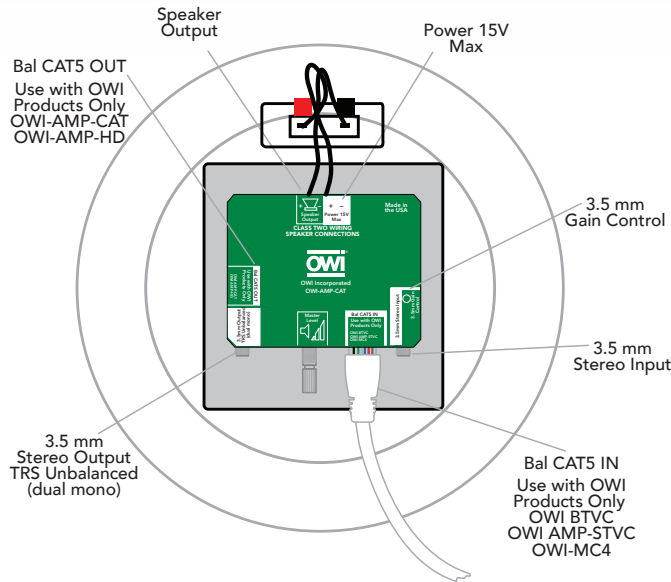
NEW


AMP-CAT-  
IC5/IC6

## SELF POWERED, SINGLE CHANNEL IN-CEILING SPEAKER/ AMPLIFIER



Perfect for classroom or conference room applications, with optional 2x2 Full Grill with metal backcan or 2x2 Metal Tile with metal backcan.



POWER SUPPLY	PS15VDC35AL5
Description	Power Supply
Input	100 to 250 VAC, 50-60 Hz, 1.4 A
Output	15 V DC, 3.5 Amps
Wire Gauge and Length	Min. 18 Gauge up to 40 Ft. Max. Length
Electrical, Power Supply	UL Listed, Level  , (Energy Star)
Weight	0.45 Lbs.
Size	4.7"H x 2"W x 1.2"D

MODEL NAMES CONFIGURATION	
IC =	Cut In In-Ceiling Speakers
2x2 =	Drop In Speaker on a 2x2 Panel
FG =	Drop In Speaker on a 2x2 Panel with Full Grill Covering the Bottom
SVC =	Volume Control
51 =	Speaker Size and Quantity
52 =	1 Each, 5 Inch Speaker Package
	2 Each, 5 Inch Speaker Package
	(1 Amp & 1 Companion Speaker Package)
61 =	1 Each, 6 Inch Speaker Package
62 =	2 Each, 6 Inch Speaker Package
	(1 Amp & 1 Companion Speaker Package)



OWI Incorporated  
17141 Kingsview Ave.,  
Carson, CA 90746 U.S.A.  
ph.: 310.515.1900  
toll free: 800.638.1694  
fax: 310.515.1606  
email: info@owi-inc.com



[www.owi-inc.com](http://www.owi-inc.com)

Specification sheets available for download  
[owi-inc.com/amplified-ceiling-speakers.html](http://owi-inc.com/amplified-ceiling-speakers.html)

rev 072618