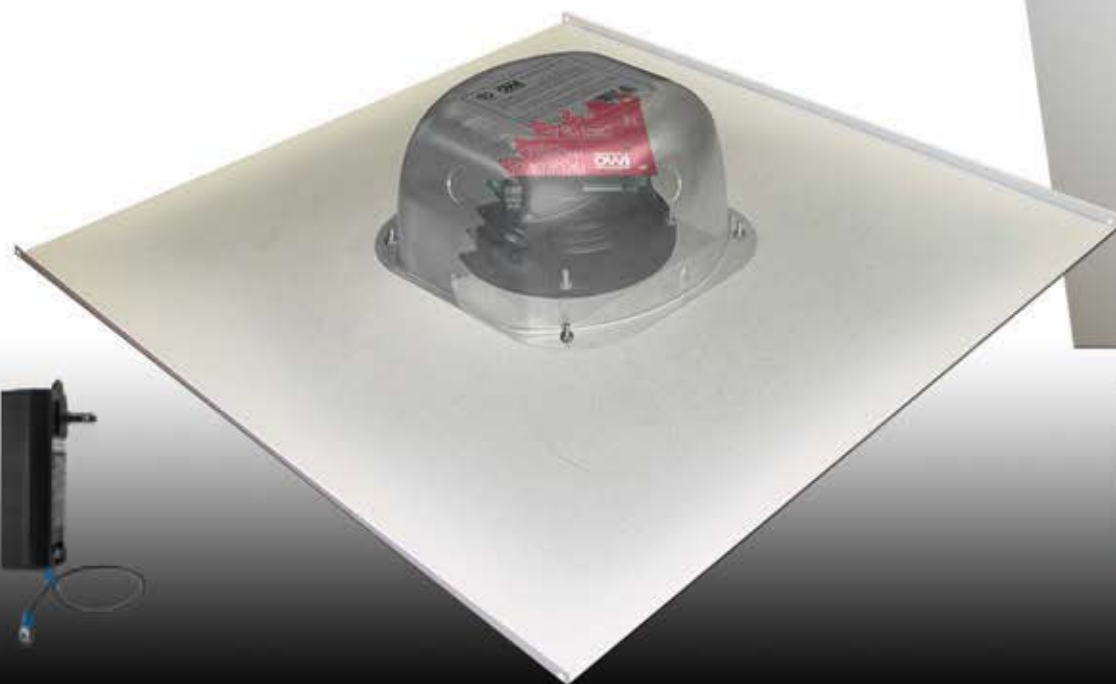


2X2AMP-BT2S61

# AMPLIFIED CEILING SPEAKER WITH BLUETOOTH ON A 2X2 TILE

TWO SOURCE/INPUTS. CONTROLS UP TO 4 SPEAKERS.  
WITH A UL LISTED, 15 VDC, LEVEL **V** POWER SUPPLY



## BLUETOOTH®\* WIRELESS AUDIO

\* Bluetooth is a registered trademark of Bluetooth-SIG Inc.

The OWI 2X2AMP-BT2S61 is a self-powered speaker/amplifier with Bluetooth® Wireless Capability. This amplifier can drive up to four speakers connected series parallel to have a net impedance of 8 Ohms.

With an included UL Listed, Level **V** (Energy Star), power supply, the amplifier can output 40 watts or 10 watts per speaker in a four speaker hook-up.

### FEATURES

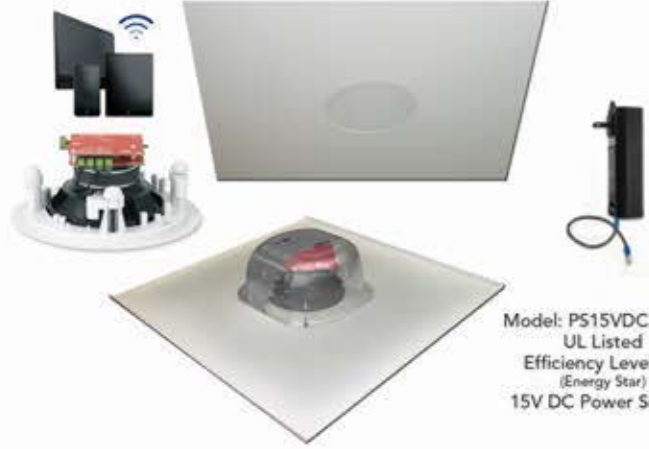
- Bluetooth Wireless for Active (Amplified Speaker)
- Two Audio Inputs – Balanced Line In and 3.5 Mini Unbalanced Jack Line In
- Priority Override Feature
- Balanced Line Level Output
- Power Amplifier Outputs 2 Times 20 W or 40 W Total
- 15V DC, UL Listed, Efficiency Level **V** (Energy Star) Power Supply
- Up to 4 Speakers per Amplifier
- Up to 10 Amplified Speakers on One Line Daisy Chained Together
- Speaker/Support Truss/Backcan Combination Program Available
- Available also on a 2 x 2 Panel and Backcan Assembly

**OWI**<sup>®</sup>  
OWI Incorporated  
Established 1978

2X2AMP-BT2S61

# AMPLIFIED CEILING SPEAKER WITH BLUETOOTH ON A 2X2 TILE

TWO SOURCE/INPUTS. CONTROLS UP TO 4 SPEAKERS.  
WITH A UL LISTED, 15 VDC, LEVEL 1 (Energy Star) POWER SUPPLY



Model: PS15VDC35AL5  
UL Listed  
Efficiency Level 1 (Energy Star)  
15V DC Power Supply

## BLUETOOTH® FEATURES\*

- Certified SIG Bluetooth Version 3.0
- Frequency Range 2.40 – 2.48 MHz
- Supports A2DP, AVRCP, HFP/HSP and SPP
- Password Protected

## GENERAL SPECIFICATIONS

**MODEL NUMBER:** 2X2AMP-BT2S61

Woofer Size: 6.5 Inches  
 Weight of Amplifier / Speaker: 15 Lbs.  
 Height of Amplifier / Speaker: 4.5 Inches  
 Backcan: UL Listed Enclosure  
 Support Truss: 2X2 Metal Tile

**ELECTRICAL AMPLIFIER:** 2X2AMP-BT2S61

Input Voltage, Nominal: (25 Watts) 15 V DC  
 Input Current, Operating (15VDC): 1.667 Amps. Peak  
 Input Volt-Amperes, Peak (15VDC): 25 V Amps  
 Input Voltage, Maximum: 16.5 V DC

### Frequency Response:

EQ Set to Flat: 50 Hz to 15 kHz  
 Bass: +10 dB @ 50 Hz  
 Treble: +10 dB @ 10 Hz  
 THD + Noise: <1% at 10.8 W, "A" Weighted  
 S/N: >90 dB  
 Max Power Output (28V in.): 2 x 20 W or 40 W Total  
 DC Power, Standby: 1.3 W

### DC Power

Short Circuit Protected: Yes  
 Over Current Protected: Yes  
 Over Voltage Protected: Yes  
 Over Temperature Protected: Yes  
 Min. Load Impedance: 4.0 Ω (Two 8 Ω Speakers in Parallel)  
 Min. Input Impedance, Priority In: 20,000 Ω  
 Min. Input Impedance, Bal. Line In: 820 Ω  
 Min. Input Impedance, Mini-Jack: 2300 Ω  
 Dynamic Mic. Input Impedance: 300 Ω  
 Warranty: 1 Year

**MODEL NUMBER:** PS15VDC35AL5

Description: Power Supply  
 Input: 100 to 240 V AC, 50-60 Hz, 1.4A  
 Output: 15 V DC, 3.5 Amps  
 Wire Gauge and Length: Min. 18 Gauge Up to 40 Ft. Max. Length  
 Electrical, Power Supply: UL Listed, Level 1 (Energy Star)  
 Weight: 0.45 Lbs.  
 Size: 4.7" x 2" W x 1.2" D

## RECOMMENDED NON-AMPLIFIED SPEAKERS:



2X2IC6NA - 8 Ohms, 6.5", 2-Way

## RECOMMENDED ACCESSORIES



AMPSTVCW – Line Level, Stereo / Mono  
Volume Control

Available in 1, 2 or 4 speaker combinations models  
and optional Volume Control.

\* Bluetooth is a registered trademark of Bluetooth-SIG Inc.

