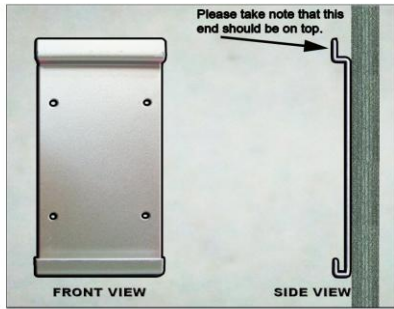
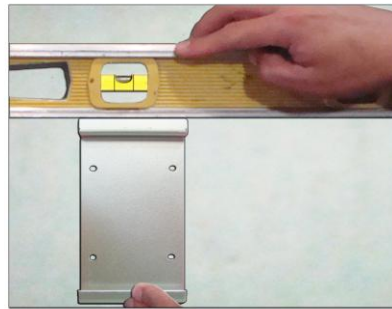


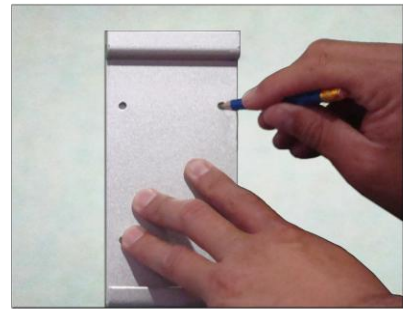
HOW TO MOUNT THE CRS201 USING THE MOUNTING PLATE



1. Place the bracket on the wall at your desired location.



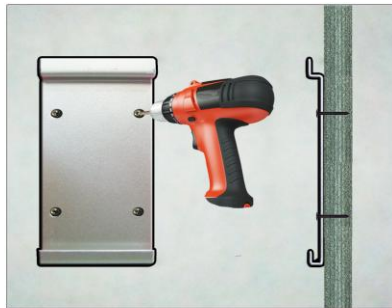
2. Use a level to determine the proper level of the CRS201.



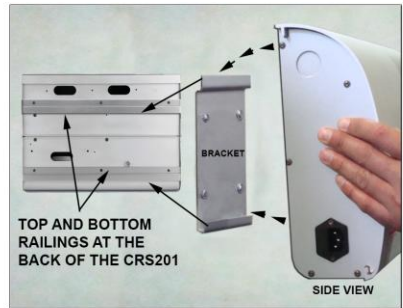
3. Mark the four screw holes on the bracket with a pencil.



4. Drill the four holes on the wall using the drill bit for a 3mm self-tapping screw.



5. Mount the bracket on the wall using the four 3mm self-tapping screws.



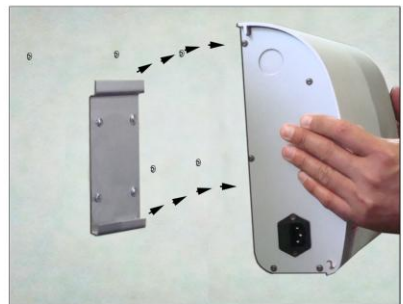
6. Mount or hang the CRS201 on the bracket.



7. Use the level again to double check the level of the CRS201.



8. Slide the door all the way to the left then mark the five screw holes with a pencil.



9. Remove the CRS201 from the bracket.



10. Open the CRS201 door and align the screw holes with the holes on the wall then drill the five security screws.



11. Connect the power cord and plug it in a power source.