

meet all the  
**trusted tools**  
that make your  
**network work**



VERSIV

COPPER

FIBER

WIRELESS

INSTALLATION



# your most trusted test solutions working for you

When you partner with Fluke Networks, you can count on the industry's most reliable and productive cabling test tools for growing your business and staying on top of a fast-moving marketplace. As the industry leader, our test experts are actively involved with technical committees and panels that set new standards. So we're always a step ahead with advances that keep you a step ahead, too. Because we understand the hands-on needs of cabling professionals, we can provide the best in tools, service, training, support and new technologies that improve your bottom line. Our complete family of tools is designed to provide the right fit for each user's experience level and work model, reducing training and increasing productivity.

That's Fluke Networks' promise to you.

VERSIV

COPPER

FIBER

WIRELESS

INSTALLATION



# grow **your** business

Fluke Networks is the leading provider of innovative copper and fiber test solutions. We bring you the most comprehensive line of premises network testing tools for the verification, qualification and certification of copper and fiber optic cabling systems.

Our award-winning solutions are used by 91 of the Fortune 100, and are recognized worldwide by network owners, installers and maintainers for providing superior visibility.

Each tool combines speed, accuracy and ease of use to ensure fast problem resolution and optimum network performance. The more complex and mission-critical network infrastructures become to your customers, the greater value and competitive advantage we bring to your business.

VERSIV



COPPER

FIBER

WIRELESS

INSTALLATION

# Gold Support your most trusted support package

|   |   |       |  |
|---|---|-------|--|
| CalNet®   |   | FLUKE |  |
| Calibration Certificate No. 430108  |   |       |  |
| <p>We certify that the below instrument meets or exceeds its published specifications at the points measured and has been calibrated using standards whose accuracies are traceable to national or international accepted standards, or have been derived by the ratio type of self-calibration techniques.<br/>This certificate may not be reproduced other than full.</p> |   |       |  |
| Model   | DTX-1800  |       |  |
| Serial no.  | 9480003-9480004   |       |  |
| Object  | CABLE ANALYZER  |       |  |
| Manufacturer  | FLUKE   |       |  |
| Inventory no.   |   |       |  |
| Customer  |   |       |  |
| Site no.  |   |       |  |
| Number of pages   | 5   |       |  |
| Date of calibration   |   |       |  |
| Calibration due to  |   |       |  |
| Calibrated by   | R. Kalidien   |       |  |
| Seal  | Head of laboratory  |       |  |
|    |  |       |  |
|   | G.J.J. Sprik  |       |  |
| <small>Fluke Nederland B.V. is certified by Kema for ISO 9001:2000<br/>Fluke Nederland B.V. / Service department / Science Park Eindhoven 5108 / 5692 EC SON<br/>Tel. +31 (0)40 267 5308 Fax +31 (0)40 267 5321</small>   |   |       |  |



Purchase "Gold" to optimize your investment in Fluke Networks test equipment. Gold Support is a comprehensive maintenance program that offers you\*:

- Free annual calibration ensuring compliance with ISO-9001 standards and factory refresh (includes software/firmware upgrades)
- Unlimited, no-hassle repair service
- Loaner units from Fluke Networks during repair and scheduled calibration
- Free accessory replacement in case of defects (incl. battery packs and even up to once a year a Permanent Link Adapter)
- Discount on a CCTT (Certified Cabling Technician Training). Gold owners can benefit from this discount multiple times
- Special membership treatment, like 24x7 priority Technical Support through Gold-only phone number
- A "Lifetime BuyBack Guarantee". Claim cash-back rebates when it's time to upgrade to a new tester

\* Depending upon the product for which Gold Support has been purchased, some services may not apply

If you own multiple instruments there is a good chance you qualify to become a Fleet Gold customer. Fleet Gold customers enjoy the following benefits:

- Up to 15% discount on the prices of regular Gold Support)
- Higher "Lifetime BuyBack Guarantee" cash-back rebates
- Upfront yearly agreement, making budgeting easy.

VERSIV

COPPER

FIBER

WIRELESS

INSTALLATION



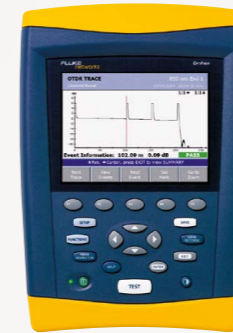
**1993 – PentaScanner®**  
Industry breakthrough with the first  
Cat 5 tester



**1995 – DSP 100 Series**  
The first digital cable tester



**1999 – DSP-4000 CableAnalyzer™**  
Winner of Readers' Choice Award, Cabling  
Installation and Maintenance



**2002 – OptiFiber® Certifying OTDR**  
First handheld certifying OTDR



**2004 – IntelliTone™ Toners & Probes**  
First digital toner and probe

## Work smarter with superior support, training and technical assistance

### CERTIFIED CABLING TEST TECHNICIAN (CCTT) COURSE

You need to train and certify your existing and new employees to stay competitive in the installation and certification of high-speed structured cabling systems. Investing in the Fluke Networks Certified Cabling Test Technician™ (CCTT) training and certification program will not only improve installer skills, but also their effectiveness and productivity on the job in testing, certifying and troubleshooting cabling systems.

The CCTT consists of two separate days of training: one with focus on copper and a 2<sup>nd</sup> day with focus on fiber. Each day is a powerful one-day course which covers the current standards and provides hands-on training with the DTX CableAnalyzer. During the fiber day loss/length testing is done with the DTX-MFM2 and OTDR measurements are made with the DTX Compact OTDR module. A CCTT for the Versiv Cabling Certification Product Family will become available towards the end of 2013.

VERSIV

COPPER

FIBER

WIRELESS

INSTALLATION



**2004 – DTX CableAnalyzer™**  
First Level IV cable tester



**2005 – CableIQ™**  
First cabling bandwidth tester  
for network technicians



**2010 – DTX-CLT CertiFiber® Optical  
Loss Test Set** Efficient Optical Loss Test Set  
(OLTS) for quick fiber certification.



**2012 – OptiFiber Pro**  
The only enterprise OTDR  
for everybody



**2013 – Versiv Cabling Certification  
Product Family**

After successful completion of the class, the Fluke Networks CCTT Partner will deliver CCTT certificates to the attendees. Contact your local sales representative to learn who the authorized CCTT Partner is in your country.

### TECHNICAL ASSISTANCE

Have a question? Need help troubleshooting a technical issue? Looking for knowledgeable advice on which Fluke Networks solutions will best meet your network analysis needs? The certified support technicians at our Technical Assistance Center are available to help you.

### REPAIR SERVICES

Fluke Networks' Service Centers are equipped with the necessary instruments, standards, procedures, and personnel to maintain Fluke Networks products at peak performance.

To locate the Service Center closest to you please visit [www.flukenetworks.com/support/service-centers](http://www.flukenetworks.com/support/service-centers)



VERSIV

COPPER

FIBER

WIRELESS

INSTALLATION

# The Versiv™ Cabling Certification Product Family



Copper Certification  
DSX-5000

Fiber Certification  
CertiFiber Pro

OTDR Certification  
OptiFiber Pro

Wi-Fi Analysis  
One Touch AT

## ProjX™ Management System

- Ease and efficiency of setting up and managing jobs
- Manage up to 100 projects simultaneously

## Taptive™ User Interface

- Gesture-based User Interface for speed and simplicity

## LinkWare™ Management Software

- Manage all results in one application
- Reduces the time it takes to get System Acceptance

## Modular Design

- Copper Twisted Pair Certification
- Fiber Loss & Length Certification
- OTDR
- Wi-Fi & network analysis

# It's all about **shortening the time to System Acceptance**, whilst maximizing Profitability

Handle up to 100 jobs, multiple teams, testers, and requirements simultaneously – avoids those errors that can erode your project's profitability.

No more waiting for the "expert" to set up the tester

Testing is faster than ever before

Expert-Analysis capabilities and "Fix Later" function eliminate delays during testing and reduce troubleshooting time

Single environment to generate reports consolidating data gathered with multiple testers, tested against a variety of standards.

Customers get easy-to-understand reports. Statistical analysis makes systems acceptance easy.

PLAN

SETUP

TEST

TROUBLE SHOOT

REPORT

SYSTEM ACCEPTANCE

VERSIV

COPPER

FIBER

WIRELESS

INSTALLATION



|                                       | <br><b>MicroScanner2<br/>Cable Verifier</b> | <br><b>LinkRunner™ AT</b> | <br><b>CableIQ™<br/>Qualification Tester</b> | <br><b>NetTool™ Series 2<br/>Inline Network<br/>Tester</b> | <br><b>DTX-1800<br/>CableAnalyzer™</b> | <br><b>DSX-5000<br/>CableAnalyzer™</b> |
|---------------------------------------|--|--|---|---|---|---|
| <b>Cable Testing</b>                  | Good   | Good   | Very Good   | Good  | Excellent   | <b>BEST CHOICE</b>  |
| Price Level                           | ★  | ★★   | ★★  | ★★★   | ★★★★  | ★★★★  |
| <b>Cable Certification</b>            |  |  |   |   |   |   |
| Certify to ISO/TIA Industry Standards |  |  |   |   | • (up to 900 MHz)   | • (up to 1,2 GHz)   |
| <b>Cable Verification</b>             |  |  |   |   |   |   |
| Cable Mapping & TDR                   | •  | •  | •   | •   | •   | •   |
| Cable length                          | •  | •  | •   | •   | •   | •   |
| <b>Cable Troubleshooting</b>          |  | Autotest   |   |   |   |   |
| Guided Troubleshooting                |  |  |   |   | •   | •   |
| Distance to open/short                | •  | •  | •   | •   | •   | •   |
| Locate impedance fault                |  |  | •   |   | •   | •   |
| Locate crosstalk fault                |  |  | •   |   |   | •   |
| Alien Crosstalk Testing               |  |  |   |   | Optional•   | Integrated  |
| Shield Test Capability                |  |  |   |   |   | •   |
| PoE Testing                           |  | 802.3af/at<br>w/TruePower  |   | 802.3af   | 802.3af<br>w/NSM  | 802.3af and 802.3at<br>Resistance Unbalance   |
| Balance Measurements (TCL, CMRL)      |  |  |   |   |   | •   |
| Nearest Switch Discovery              |  | •  |   | •   |   |   |
| <b>Port Location/ID</b>               |  |  |   |   |   |   |
| Optional cable IDs                    | •  | •  | •   | •   |   |   |
| Digital toning                        | •  | •  | •   | •   |   |   |
| Analog toning                         | •  | •  | •   | •   | •   |   |
| Connect (TCP)                         |  | •  |   | •   | • with DTX-NSM  |   |
| Ping                                  |  | •  | •   | •   | • with DTX-NSM  |   |
| <b>Test Documentation</b>             |  |  |   |   |   |   |
| Reporting Software                    |  | •  | •   | •   | • (LinkWare)  | • (LinkWare)  |

VERSIV

COPPER

FIBER

WIRELESS

INSTALLATION

CERTIFICATION

Accelerates every step of the copper certification process

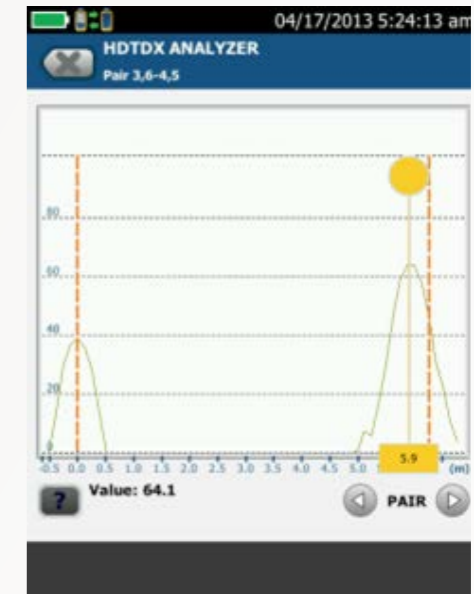
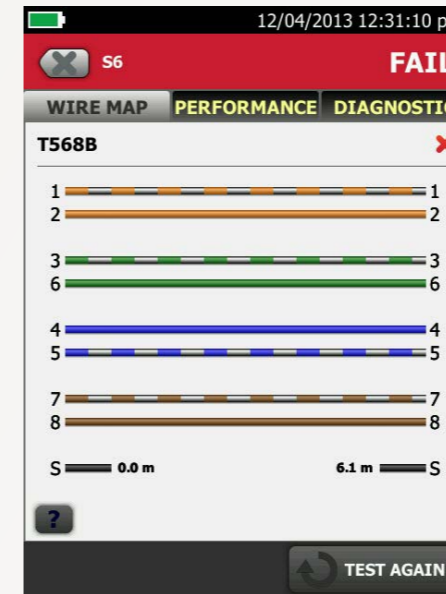
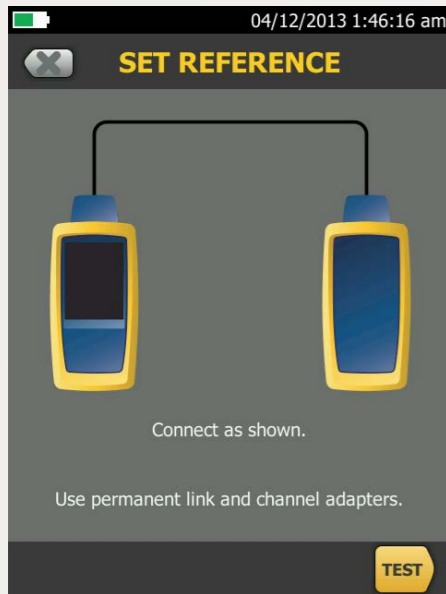
# DSX-5000 CableAnalyzer™



The DSX-5000 CableAnalyzer™ is the copper certification solution that is part of the Versiv™ cabling certification product family.

- Compliant with proposed ISO (IEC WG9 Standard IEC61935-1) Level V accuracy requirements to 1 GHz.
- Ten second Cat 6A test time contributes to the fastest way to gain certification.
- Newly designed Permanent Link Adapter is more rugged than ever before.
- Supports the complete suite of Resistance Unbalance standards needed for Power over Ethernet (PoE) – IEC61935-1 & 11801-1-4, IEEE 802.3af, IEEE 802.3at, ANSI/TIA/EIA-568-C.2.
- The first field tester to support balance measurements including Transverse Conversion Loss (TCL) and Equal Level Transverse Conversion Transfer Loss (ELTCTL). TCL and ELTCTL are important measurements found in the cabling standards. They define a minimum performance for balance, the key parameter to help determine noise immunity and to quantify the impact of electromagnetic interference (EMI).
- Manage up to 12,000 test results with full graphics.
- Model numbers with bundled Gold Membership are also available further enhancing the value of the purchase.

Model numbers: DSX-5000 INTL, DSX-5000 INTL/GLD, DSX-ADD, DSX-ADD-R



- Reduces the time required to fix cabling faults with dedicated HDTDX and HDTDR diagnostics, a simple test that locates the problem. Graphically displays the source of failures including crosstalk and distance to shield faults.
- A graphical results screen allows you to look down the cable to see exactly where any crosstalk, return loss or shield faults are happening on any given link.
- The DSX CableAnalyzer is the first field tester to report distance to shield integrity issues using a patented A.C. measurement technique.

Go to <http://www.meet-versiv.com> to learn more about the DSX-5000 and the other members of the Versiv Cabling Certification Product Family.



Accelerates every step of the copper & fiber certification process

## DSX CableAnalyzer Copper/Fiber Kits

If you certify twisted pair copper and fiber optic cabling, we have the kit for you. By ordering a single model number you ensure you purchase everything you need. These kits bundle a DSX-5000 CableAnalyzer with a set of Fiber Modules so you have what you need to certify both copper and fiber media. Basic "Tier 1" fiber certification is done with the CertiFiber Pro "OLTS" Modules. Extended fiber certification is made possible with the OptiFiber Pro OTDR Module. All kits come with an integrated Fiber End-Face Inspection Camera as well as Fiber "OneClick" cleaners. Model numbers with bundled Gold Membership are also available further enhancing the value of the purchase.

Model numbers: DSX-5000Mi INTL, DSX-5000MiINTL/GLD, DSX-5000Qi INTL, DSX-5000QiINTL/GLD  
DSX-5000QOi INTL, DSX-5000QOiINTL/GLD, DSX-5000NTB INTL, DSX-5000NTBINTLGLD

VERSIV

COPPER

FIBER

WIRELESS

INSTALLATION



Model numbers: DTX-1800, DTX-1200, DTX-LT, DTX-ELT, DTX-ELT-PRO

Superior vision into high-performance cabling systems

## DTX CableAnalyzer™ Series

**The DTX CableAnalyzer significantly reduces your total time to certify by improving every aspect of testing – saving you up to four hours every day. A Cat 6 takes only 9 seconds.**

DTX certifies cabling to performance requirements of TIA/ISO standards (e.g., Cat 5e/6/6A, Class E/D/F/F<sub>A</sub>). Level IV Accuracy and 900 MHz allows you to certify cabling for emerging network applications such as 10 Gigabit Ethernet. The DTX is the only cable tester with a “truly centered plug” (DTX-PLA002S) enabling a certification that is fully compliant with the standards. Advanced troubleshooting diagnostics measure distance to performance defect (NEXT, RL), identify corrective actions and graphically display crosstalk and impedance behavior. Optional on-board fiber modules, 12-14 hour battery life and fast setup and reporting make the job easier and save time. With DTX, you’re ready for whatever the world throws at you – today and tomorrow.

Go to [www.flukenetworks.com/DTXDemo](http://www.flukenetworks.com/DTXDemo) to take a virtual test drive and use our ROI calculator to figure out how quickly the DTX CableAnalyzer can pay for itself.

## DTX CableAnalyzer Copper/Fiber Kits

If you certify twisted pair copper and fiber optic cabling, we have the kit for you. These kits bundle a DTX CableAnalyzer set with DTX Fiber Modules so you have what you need to certify both copper and fiber media. Extended fiber certification is made possible with the DTX Compact OTDR module.



Model numbers: DTX-1800-E,  
DTX-1800-M, DTX-1800-MS,  
DTX-1200-M, DTX-1200-MS,  
DTX-1800-O, DTX-1800-MO,  
DTX-1800-MSO

## DTX Fiber Modules

Adds fast fiber certification and fault-location to the DTX CableAnalyzer. Certify multimode and singlemode fiber to TIA/ISO standards. New DTX-EFM2 modules enables compliance with the TIA and IEC requirements for Encircled Flux optical light source launch conditions. Test attenuation, length and polarity quickly and simply with the one-button Autotest. No other fiber test solution is faster. Troubleshoot problems visually with the on-module VFL. The modules are equipped with interchangeable test adapters.



Model numbers: DTX-MFM2, DTX-EFM2, DTX-SFM2

VERSIV

COPPER

FIBER

WIRELESS

INSTALLATION

## DTX Patch Cord Adapters

The DTX Patch Cord Test solution is a simple, cost-effective way to quickly verify whether a patch cord meets performance specifications specified in the Standards. Simply plug in the rugged, compact adapters into your DTX CableAnalyzer, download the test database, and you've got the high-speed, fully automated tester you need to meet TIA and ISO patch cord test requirements.



Model numbers: DTX-PC5E5, DTX-PC6S, DTX-PC6AS

## DTX Coax Adapters

The DTX-COAX adapters allow you to test coaxial cabling links with the DTX Series CableAnalyzer.

Test video distribution cabling or legacy data network coaxial cabling and measure the impedance, the termination status, attenuation (insertion loss) as well as the link length and propagation delay.



Model number: DTX-COAX

# DSX and DTX Class F/F<sub>A</sub> Permanent Link Adapters

Our DTX-TERA or new DSX-TERA-KIT and DTX-GG45 Adapters for Class F/FA installations deliver a fast, accurate way to certify Class F/FA cabling systems to ISO standards using the TERA or GG45 connector system. The manufacturer of the TERA Class F/FA connector system endorses and recommends both the DTX-1800 and the DSX-5000 with the DTX-TERA Adapters. With Class F<sub>A</sub> Adapters you can be sure false passes are a thing of the past – no matter what frequency range you're testing in.



Model numbers: DSX-TERA-KIT, DTX-TERA, DTX-GG45

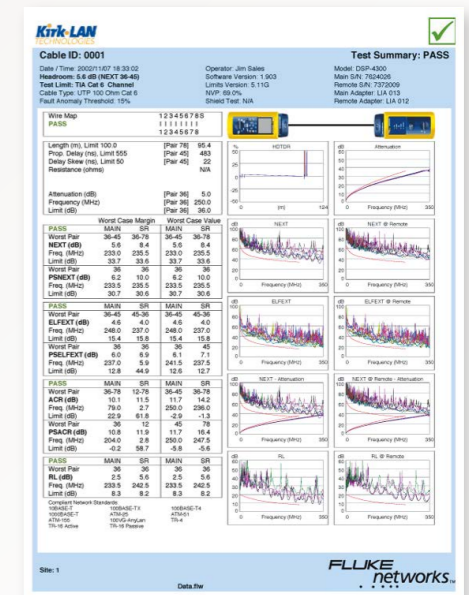
# LinkWare™ Cable Test Management Software

Our powerful, secure Windows®-based software works with a wide range of Fluke Networks cable testers to help you organize, edit, print, save and archive your job site test results. Merge test results into an existing database with the option to sort, search and organize by any number of data fields or parameters. Any data uploaded to your computer with LinkWare ensures that you're seeing the true measurements collected by your tester.

For advanced results analysis check out LinkWare Stats, a statistical report generator that is included with each Linkware download.

- Generate reports that highlight marginal or failed links
- Demonstrate that an installation meets warranty requirements
- Create graphs and tables
- Helps speed-up the System Acceptance process

Free download [www.flukenetworks.com/linkware](http://www.flukenetworks.com/linkware)





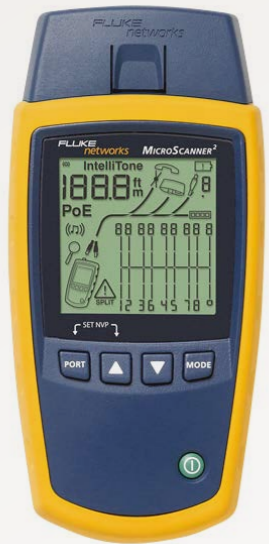


# the **leading choice** for copper certification

**What makes Fluke Networks the preferred choice for copper certification tools among cable installers?**

Our tools are fast, easy to use and intuitive. They provide an unmatched repeatable accuracy you can count on. Support everything from Permanent Link and Channel testing to diagnostics that tie all critical data together. And our tools are versatile. Optional fiber test modules turn your copper tester into a powerful fiber certification tester.

## MicroScanner Cable Verifier



Model numbers:  
MS2-100, MS2-KIT

Next generation MicroScanner verifies voice/data/video cable and services with a revolutionary user interface. Graphical wire map, length, cable ID, and distance to fault displayed on one screen. Tests all common media types including RJ11, RJ45, Coax, with no need for adapters. Verifies today's media services, including 10/100/1000 Ethernet, POTS, and PoE.

## MicroMapper™



Model number:  
MT-8200-49A

This small, handheld cable tester lets you quickly and easily verify the integrity of Ethernet twisted pair cabling. It provides visibility of opens, shorts, crossed, reversed and split pairs. Just push the TEST button, and MicroMapper will automatically scan all wire pairs for any existing faults in your cable.

## IntelliTone™ Toner and Probe



Model numbers:  
MT-8200-60A (200 Kit), MT-8200-50A (100 Kit)

The IntelliTone Toner and Probe Series from Fluke Networks gives you a digital signal locating technology that's as advanced as the systems you work with. IntelliTone is a breakthrough solution – and the only solution – that locates and isolates even the most elusive, hidden or bundled voice, data and video cables quickly and reliably, even on active networks. Dramatic gains in speed, precision and productivity make analog tools obsolete.

# verification solutions for basic connectivity testing



For network technicians and contractors who are constantly swapping cubes and stations and making other infrastructure changes, Fluke Networks provides the troubleshooting tools to master cabling installation and subsequent adds, moves and changes. For datacom installers, copper verification has become part of daily testing for good reason: it pays to verify before you certify. Our tools are ideal for verifying Cat 5, 5e, 6 and 6A twisted pair, coaxial cabling and security wiring, covering a broad range of physical media that is typically installed in commercial and residential buildings.

VERSIV

COPPER

FIBER

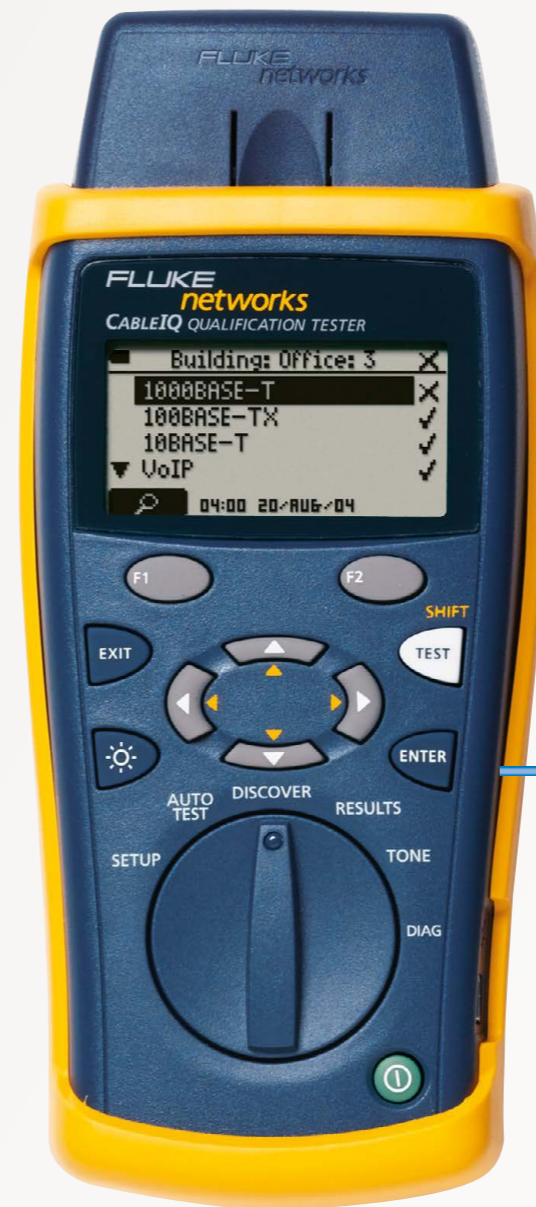
WIRELESS

INSTALLATION

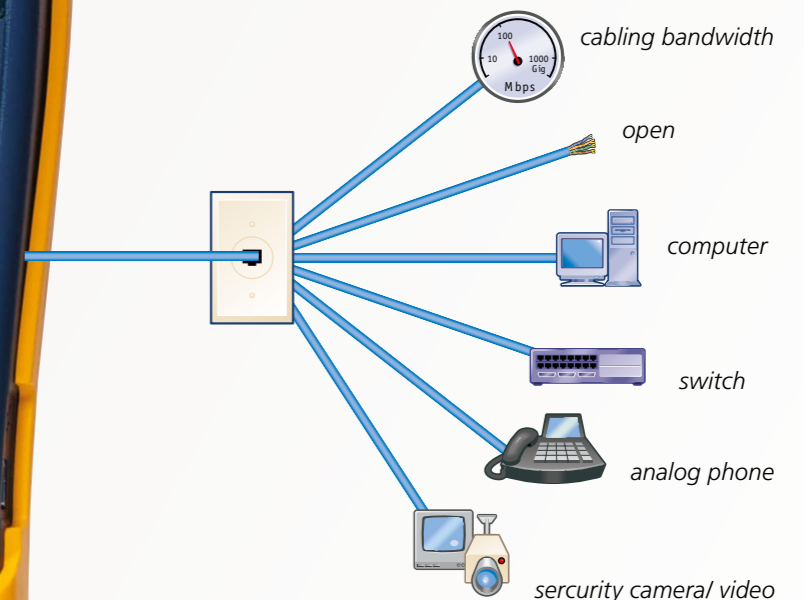
# CableIQ™ Qualification Tester

CableIQ is the first cabling bandwidth tester designed for network technicians who need to troubleshoot connectivity problems and qualify cabling bandwidth. It gives network techs the vision to see whether existing cable is qualified to support 10/100, VoIP or Gigabit Ethernet, quickly isolate cabling from network problems and discover what is at the far end of any cable. It detects speed and duplex settings of attached switches and PCs. Intelligent wiremap graphically shows distance to faults (e.g., pin 1 break at 37 ft). Lightweight, rugged, reliable unit tests all copper cabling. Its ease and power can help network techs close trouble tickets faster and reduce on-call time by up to 30%.

Model numbers: CIQ-100, CableIQ CIQ-KIT, CableIQ + IntelliTone 200 Probe and six remote IDs, CIQ-FTKSFP, CIQ-KIT + FTK1000, CIQ-GSV, CIQ-KIT + LinkRunner Pro, CIQ-SVC, CIQ-KIT + LinkRunner, CIQ-VOIP, CIQ-KIT + NetTool Series 2 NTS2-VOIP



CableIQ can see what speeds existing cabling can support, quickly isolate cabling from network problems and discover what's at the far end of any cable.



VERSIV

COPPER

FIBER

WIRELESS

INSTALLATION

QUALIFICATION

# a closer look at qualification

Qualification test tools include the functions of verification tools, but go further in their capability. Designed specifically for network technicians, the key function of a qualification test tool is its capability to determine if a cabling link can support the bandwidth requirements of the network (e.g. 100BASE-TX, VoIP, Gigabit Ethernet). At the same time, qualification adds powerful diagnostics and troubleshooting capabilities. If a cabling link cannot support the bandwidth requirements of the network, qualification can tell you why with detailed information on the nature and location of the fault – a function that goes well beyond the basic continuity tests of verification.

|   | <br><b>Fiber Optic Cleaning Kits</b> | <br><b>FiberInspector Pro/Mini Video Microscopes</b> | <br><b>LinkRunner™ AT 2000</b> | <br><b>SimpliFiber Pro</b> | <br><b>MultiFiber Pro</b> | <br><b>DTX-CLT CertiFiber Optical Loss Test Set</b> | <br><b>DTX Cable-Analyzer™ with Fiber Modules</b> | <br><b>CertiFiber Pro</b> |
|---|---|--|---|---|--|--|--|--|
| <b>Fiber Testing</b>  | N/A   | N/A  | Good  | Good  | Very Good  | Excellent  | Excellent  | <b>BEST CHOICE</b>   |
| Price Level   | ★   | ★★   | ★★  | ★★  | ★★   | ★★★  | ★★★★   | ★★★★   |
| <b>Calibrated Wavelengths</b>   | Multimode<br>Singlemode   | Multimode<br>Singlemode  | Multimode<br>Singlemode   | 850 nm, 1300 nm,<br>1310 nm, 1490 nm,<br>1550 nm, 1625 nm   | Multimode  | Multimode<br>Singlemode  | Multimode<br>Singlemode  | Multimode<br>Singlemode  |
| Source type   |   |  |   | LED, FP Laser (1310/1550nm) & DFB Laser (1490/1625nm)   | LED  | LED, Faber-Perot Laser   | LED, Faber-Perot Laser   | LED, Faber-Perot Laser   |
| Available In interchangeable Adapters   |   |  | Use SFP adapters (SX, LX, ZX or FX) to connect to network (LC)  | FC, LC, SC, ST  | MPO (fixed)  | FC, LC, SC, ST (SC standard)   | FC, LC, SC, ST (SC standard)   | FC, LC, SC, ST (LC standard)   |
| <b>Basic Test Capabilities</b>  |   |  |   |   |  |  |  |  |
| Check connectivity  |   |  | •   | •   | • (MPO)  | •  | •  | •  |
| Check polarity  |   | •  | •   | •   | •  | •  | •  | •  |
| <b>Test Capabilities</b>  |   |  |   |   |  |  |  |  |
| Verify loss over entire link to ensure loss budget not exceeded                                   |   |  | Limited   | •   | • (MPO)  | •  | •  | •  |
| Dual-fiber loss testing   |   |  |   |   |  |  |  |  |
| TIA/TSB-140 Tier 1 and ISO/IEC 14763-3-am1 Ed1 compliant certification. Encircled Flux Compliant. |   |  |   |   |  | •  | •  | •  |
| Pass/fail results   |   |  |   | •   | •  | •  | •  | •  |
| <b>Inspection &amp; Cleaning</b>  |   |  |   |   |  |  |  |  |
| Check for fiber end-face contamination or damage  |   | FC, LC, SC, SC/APC, ST, 1.25mm, 2.5mm  |   |   |  |  |  | Optional   |
| Clean contamination   | •   |  |   |   |  |  |  |  |
| <b>Test Documentation</b>   |   |  |   |   |  |  |  |  |
| Reporting Software  |   |  | •   | • (LinkWare)  | • (LinkWare)   | • (LinkWare)   | • (LinkWare)   | • (LinkWare)   |

VERSIV

COPPER

FIBER

WIRELESS

INSTALLATION

CERTIFICATION

|   | <br><b>VisiFault Visual Fault Locator</b> | <br><b>Fiber QuickMap</b> | <br><b>Fiber OneShot Pro</b> | <br><b>DTX CableAnalyzer™ with Compact OTDR Module</b> | <br><b>OptiFiber Pro OTDR</b>                         |
|---|--|--|---|---|--|
| <b>Fiber Troubleshooting</b>                                    | Fair   | Good   | Good  | Very Good   | <b>BEST CHOICE</b>   |
| Price Level   | ★★   | ★★   | ★★  | ★★★   | ★★★★   |
| <b>Calibrated Wavelengths</b>                                   | Multimode<br>Singlemode  | Multimode  | Singlemode  | Multimode<br>Singlemode   | Multimode<br>Singlemode  |
| Source type   | Laser  | FP Laser   | FP Laser  | LED, FP Laser   | LED, FP Laser  |
| Available Interchangeble Adapters                               | 2.5mm & 1.25mm<br>SFF connectors   | LC, SC   | LC, SC  | SC  | FC, SC, ST   |
| <b>Basic Test Capabilities</b>                                  |  |  |   |   |  |
| Check connectivity  | •  | •  | •   | •   | •  |
| Check polarity  | •  |  |   |   |  |
| <b>Troubleshooting Capabilities</b>                             |  |  |   |   |  |
| Measure event loss  |  | Limited  | Limited   | •   | •  |
| Verify loss over entire link to ensure loss budget not exceeded |  |  |   | •   | •  |
| TIA/TSB-140 Tier 2 and ISO/IEC 14763-3 compliant certification  |  |  |   | •   | •  |
| Pass/fail results   |  | •  | •   | •   | •  |
| Reflectance measurements  |  | •  | •   | •   | •  |
| <b>Inspection &amp; Cleaning</b>                                |  |  |   |   |  |
| Check for fiber end-face contamination or damage                |  |  |   |   | Optional<br>E2000/APC, FC, LC, MPO,<br>MPO/APC, MPO/MTP, MPO/<br>MTP APC, MU, SC, SC/APC, ST,<br>1.25mm, 1.25mm APC, 2.5mm,<br>2.5mm APC |
| <b>Test Documentation</b>                                       |  |  |   |   |  |
| Reporting Software  |  | • (LinkWare)   | • (LinkWare)  | • (LinkWare)  | • (LinkWare)   |

VERSIV

COPPER

FIBER

WIRELESS

INSTALLATION



Accelerates every step of the fiber certification process

## CertiFiber Pro® Optical Loss Test Set

The CertiFiber Pro is the fiber “OLTS” certification solution that is part of the Versiv™ cabling certification product family.

- Fastest time to certify – two fibers at two wavelengths in three seconds.
- Unsurpassed measurement range of 12 km multimode and 130 km singlemode enables a single tester to certify both datacenter, LAN and WAN links.
- “Set Reference Wizard” provides animated guidance to eliminate incorrect reference setup and “negative loss” errors.
- Encircled Flux compliant as required by ANSI/TIA and ISO/IEC with no additional test cords.
- Dual wavelength measurement capability on a single fiber.

Models: CFP-100-M, CFP-100-S, CFP-100-Q, OFP-100-QI, CFP-Q-ADD,  
CFP-Q-ADD-R, CFP-MM-ADD,, CFP-SM-ADD

VERSIV

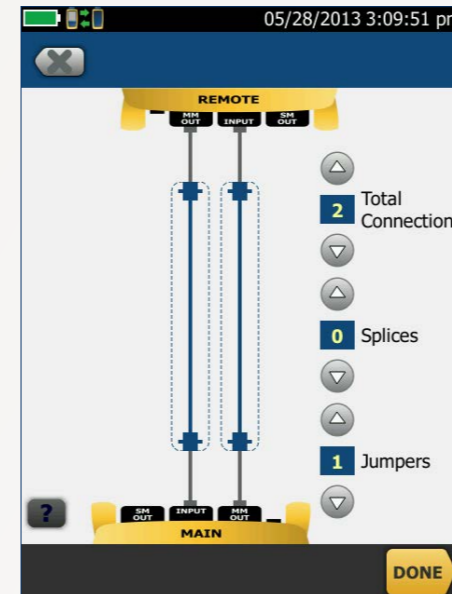
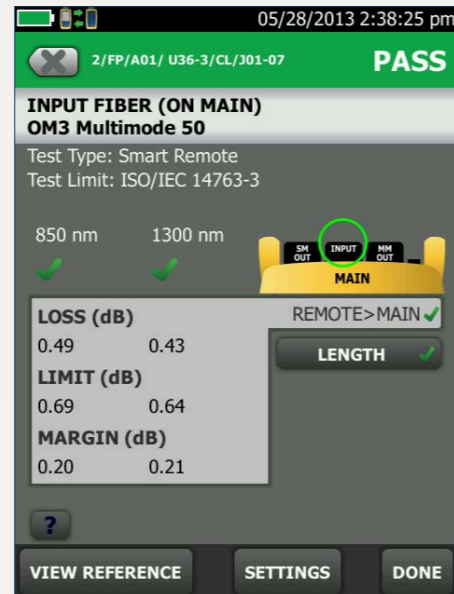
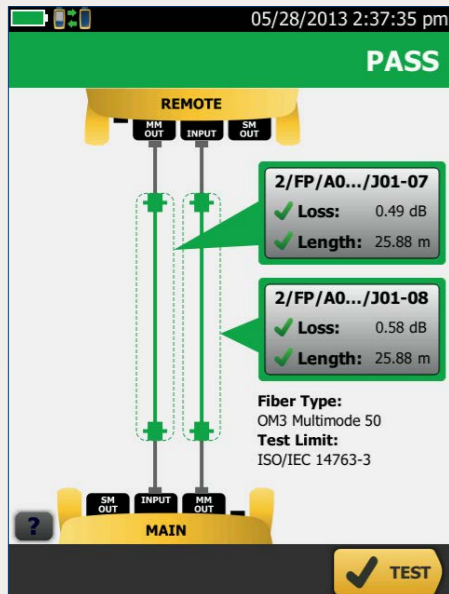
COPPER

FIBER

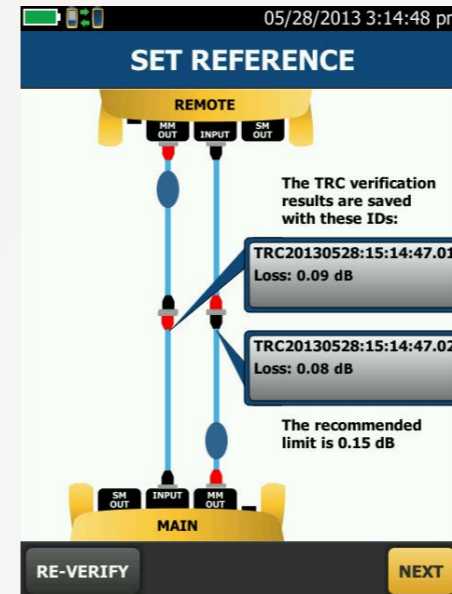
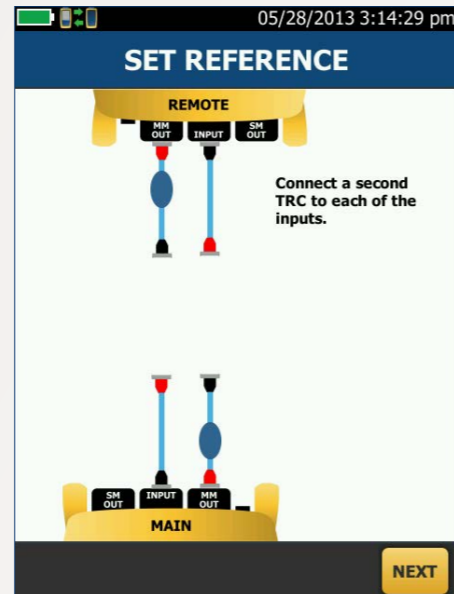
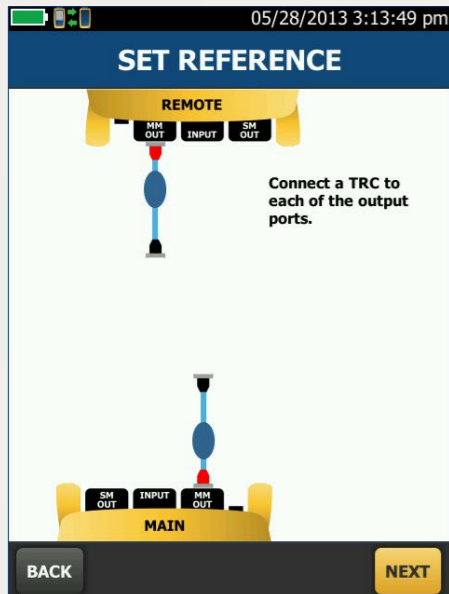
WIRELESS

INSTALLATION





- Complete data is displayed with a test result. Through a dotted line it is shown what's included in the measurement.
- Detail windows show the results for each fiber tested including margin and allowable limits for the fiber at two wavelengths.
- Simple tool to help determine the allowable loss budget.
- Integrated Visual Fault Locator (VFL) with 3 km multimode and 4 km singlemode range.
- Add-on (USB) inspection camera to perform Fiber inspection and allow end-face documentation in the LinkWare Report.



- The CertiFiber Pro OLTS has set a reference wizard function to guide the technician through setting a reference and checking test reference cords.
- The animated set-up helps reduce optical loss testing set-up errors that often result in confusing negative loss readings, taking the guesswork out of getting ready to test in the field.



Designed for Enterprise Fiber. SmartPhone user interface.

## OptiFiber® Pro OTDR

**The OptiFiber Pro is the fiber “OTDR” certification solution that is part of the Versiv™ cabling certification product family.**

Fluke Networks’ new OptiFiber Pro is the foundation for enterprise fiber testing. Its uniquely intuitive user interface, fast test speed and DataCenter OTDR function are just three of the reasons it reduces the cost of testing fiber while making datacenter and storage networks more reliable.

OptiFiber Pro is engineered specifically to meet the challenges and demands for in-premise fiber infrastructure. With the “smart” user interface and an incredible powerful feature set, anyone can use the OptiFiber Pro and become an expert premise fiber troubleshooter and get lightning fast test results.

As more and more enterprises are moving into cloud based applications and various virtualization scenarios, the resilience of these applications will be highly dependent on a reliable fiber infrastructure. OptiFiber Pro is designed to ensure that quick troubleshooting can be achieved with minimal training.

Models: OFP-100-M, OFP-100-MI, OFP-100-S, OFP-100-SI, OFP-100-Q, OFP-100-QI, OFP-Q-ADD

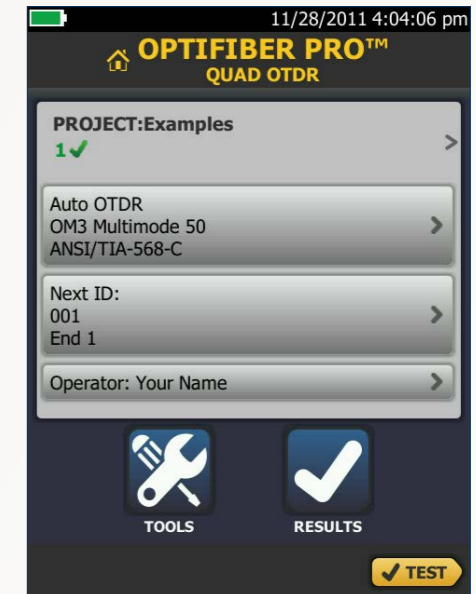
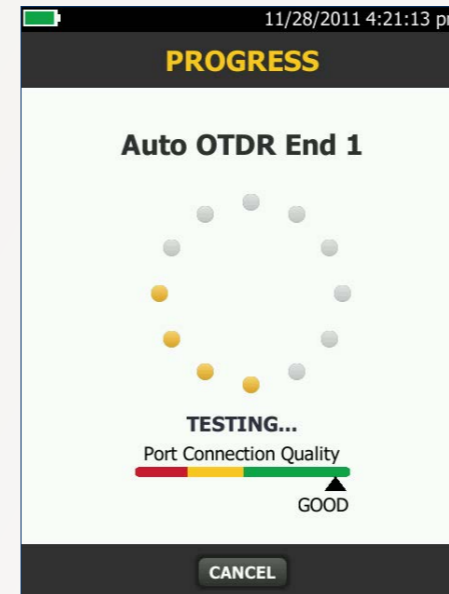
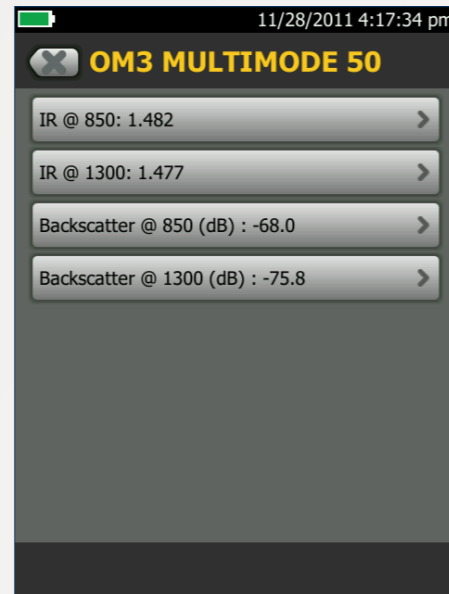
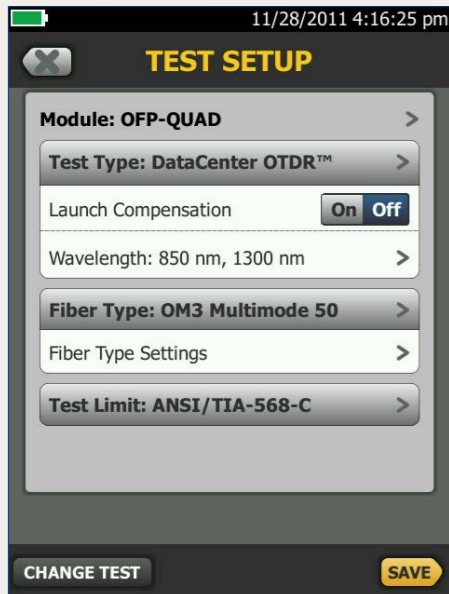
VERSIV

COPPER

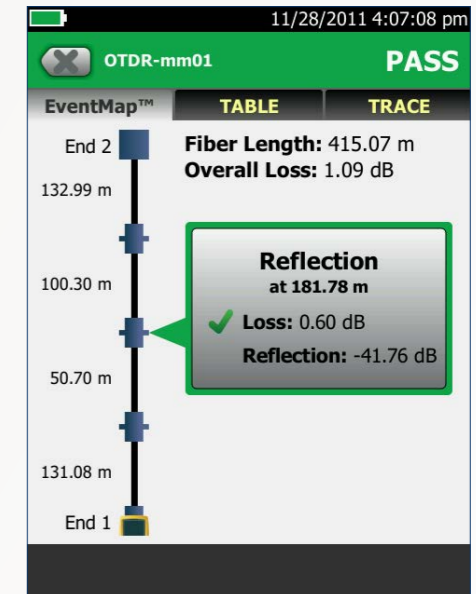
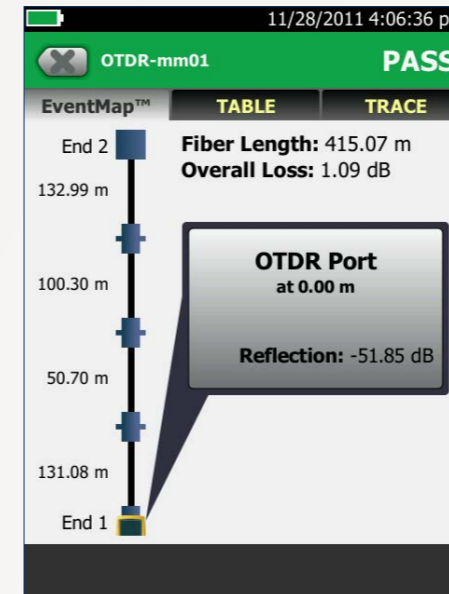
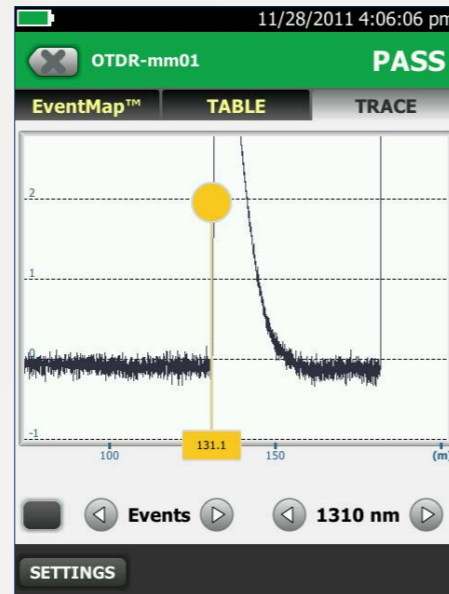
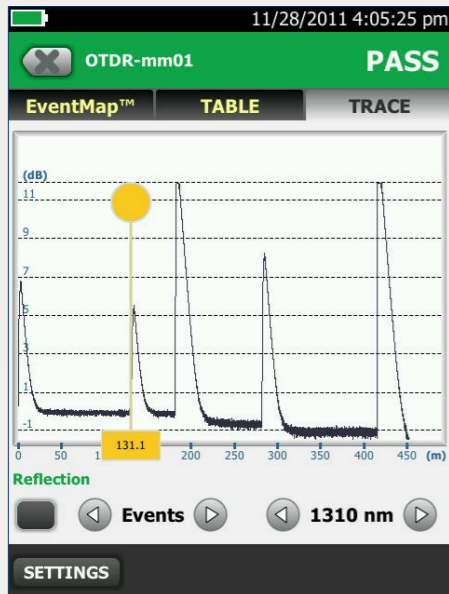
FIBER

WIRELESS

INSTALLATION



- Leverages the latest “capacitive” touchscreen technology allowing the use of gestures to deliver one of the most innovative and user-friendly OTDR interfaces.
- Accelerate fiber certification with trace times as short as 2 seconds in Quick Test mode.
- Selectable DataCenter configuration to automatically adjust all OTDR parameters for fast setup and to allow even the most novice user to test datacenter fibers.



- EventMap to provide an intuitive graphical characterization and representation of any fiber link.
- Multiple modes of displaying fiber channel details that include EventMap, Event Table, or OTDR Trace for different user preferences.
- Add-on probe to perform Fiber inspection and end-face documentation.
- On-screen reporting as well as professional printed/PDF test reporting with LinkWare Results Management Software.

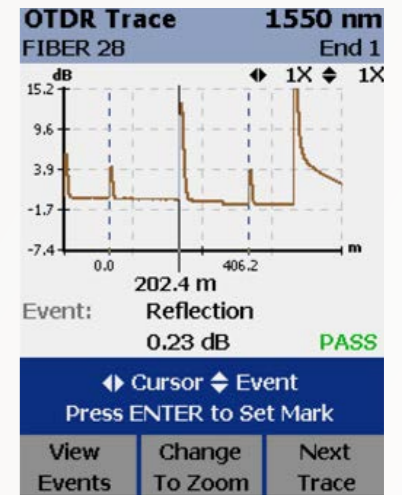
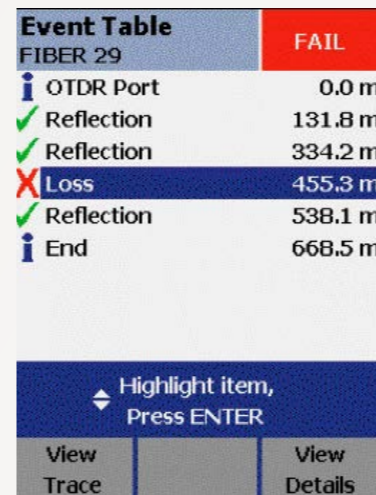
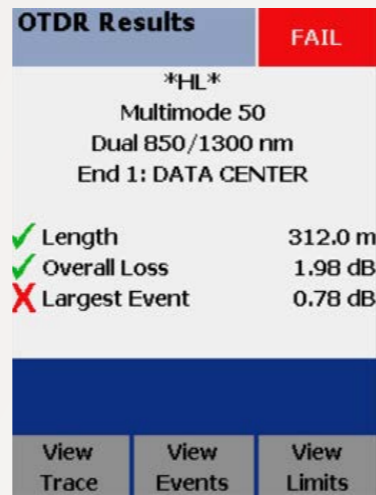
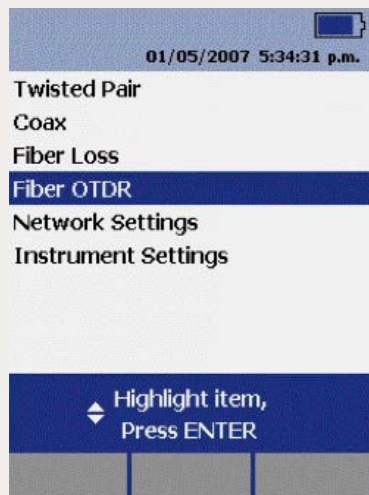


Turn your cable tester into an OTDR

## DTX Compact OTDR

**Fluke Networks' new Compact OTDR module is the latest enhancement to the DTX CableAnalyzer™ - a revolutionary test platform. In addition to performing copper certification and diagnostics, your team can become fiber test experts when you decide to grow your business and turn your cable tester into an OTDR.**

This full featured, compact OTDR module snaps onto a DTX CableAnalyzer and provides unmatched ease of use for premises fiber testing. Choose a kit that includes a DTX mainframe and smart remote, options for copper certification, optical loss/length capability, or order a module and software that can be installed on a your own DTX CableAnalyzer.



- Turn your cable tester into an OTDR. The DTX CableAnalyzer is a revolutionary test platform for both copper and fiber testing.
- Test and troubleshoot fiber like an expert with easy to use DTX Compact OTDR
- Shoot OTDR traces on singlemode and multimode links at 850nm, 1300nm, 1310nm, 1550nm.
- Launch and receive fiber compensation enables you to view where the launch (and/or receive) fiber is on the trace, and eliminates it from the certification test results.
- Perform Basic loss/length certification & Extended (OTDR trace) certification with one powerful cable tester.
- Diagnose hard to find fiber failures with DTX Compact OTDR and resolve simple cable faults, polarity problems with built-in VFL.
- Produce professional certification test reports with LinkWare Results Management Software.

Models: DTX-OTDR-QMOD,  
DTX-OTDR-KIT, DTX-QUAD-OTDR

## DTX Fiber Modules

Add record-fast fiber certification and fault-location to the DTX CableAnalyzer. Certify multimode and singlemode fiber to TIA/ISO standards. Test attenuation, length and polarity quickly and simply with the on New DTX-EFM2 modules enables compliance with the TIA and IEC requirements for Encircled Flux optical light source launch conditions. e-button Autotest. No other fiber test solution is faster. Troubleshoot problems visually with the on-module VFL. The modules are equipped with interchangeable test adapters.

Model numbers:  
DTX-EFM2, DTX-MFM2,  
DTX-SFM2



## DTX-CLT CertiFiber® Optical Loss Test Set

12 second Autotest – loss measurement of two fibers at two wavelengths, optical link budget calculation, and a PASS/FAIL analysis. Accurate fiber length measurement. Tests continuity and verifies polarity. Fast and professional test result documentation via the widely-used LinkWare reporting software.



Model numbers: DTX-CertiFiber-M,  
DTX-CertiFiber-S, DTX-CertiFiber-MS

VERSIV

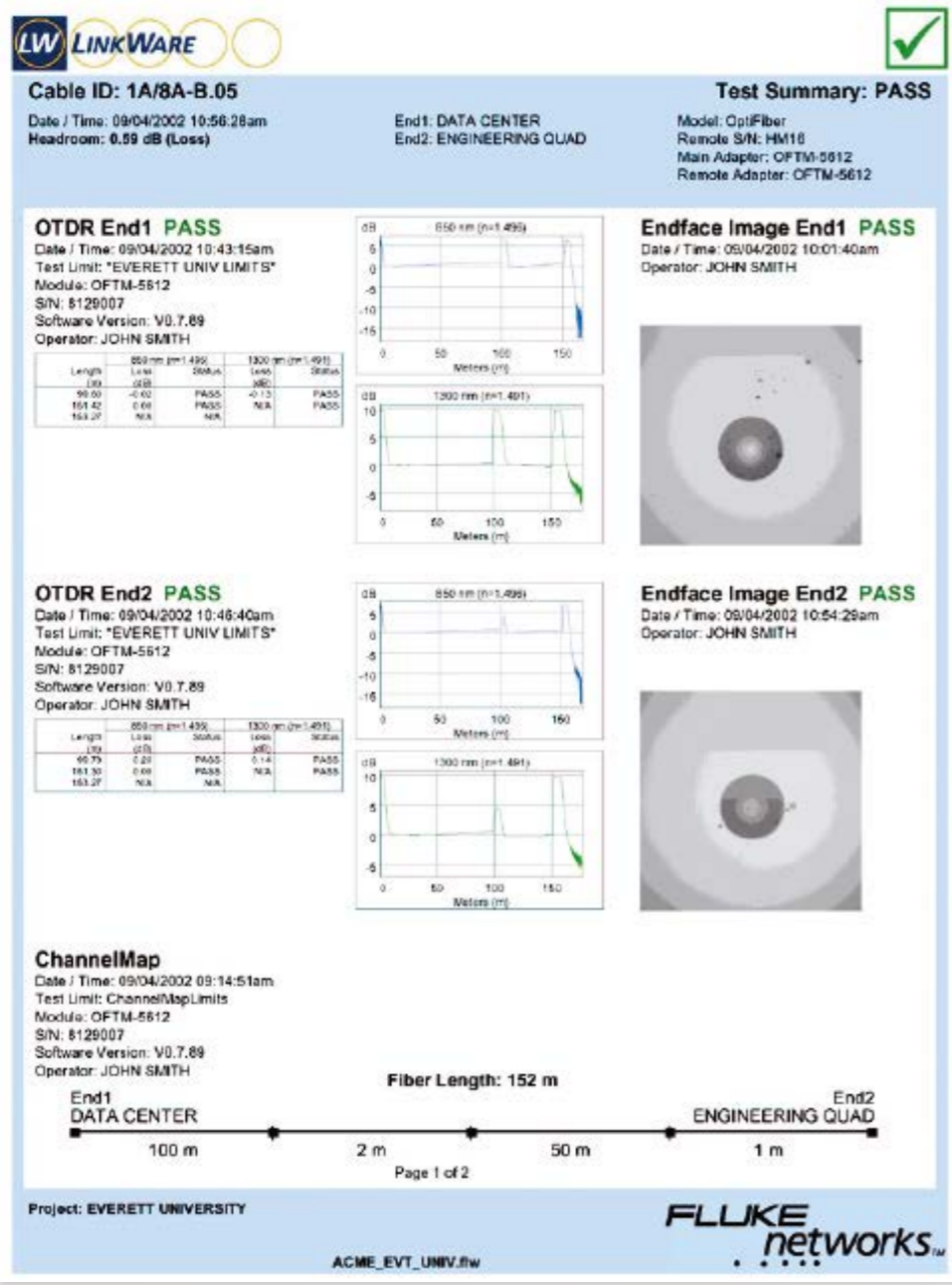
COPPER

FIBER

WIRELESS

INSTALLATION





# LinkWare™ Cable Test Management Software

Our powerful, secure Windows-based software works with a wide range of Fluke Networks cable testers to help organize, edit, print, save and archive your job site test results. Merge test results into an existing database with the option to sort, search and organize by any number of data fields or parameters. Any data uploaded by LinkWare to your computer ensures that you're seeing the true measurements collected by your tester. LinkWare software is included with Fluke Networks' OptiFiberCertifying ODTR, and is available as a free download at [www.flukenetworks.com/linkware](http://www.flukenetworks.com/linkware)

- For advanced results analysis check out LinkWare Stats. A full version of this statistical report generator is now included with each Linkware download.
- Generate reports that highlight marginal or failed links
  - Demonstrate that an installation meets warranty requirements
  - Create graphs and tables



# count on us for Tier 1 and Tier 2 fiber certification

Fluke Networks leads the way in responding to TSB140's and ISO/IEC 14763-3 (2006) two tier certification of installed fibers with loss/length (Tier 1/Basic) measurements and requirement for OTDR trace (Tier 2/Extended). Our DTX Fiber Test Modules and DTX CertiFiber automate Tier 1 certification, and both DTX and OptiFiber integrate Tier 1 and Tier 2 support. Fluke Networks' two-tier testing gives installers a complete picture of their fiber installation, while giving network owners proof of a quality installation.

VERSIV

COPPER

FIBER

WIRELESS

INSTALLATION



Taking complexity out of MPO testing

# MultiFiber™ Pro

**MultiFiber Pro is the industry's first MPO 12-fiber field tester (Power Meter and Light Source) that validates multimode MPO trunk cables with unprecedented efficiency.**

MultiFiber Pro automatically tests all fibers in a MPO cable without using fan-out cords, perfect for large contractors working in data centers installing pre-terminated MPO fiber trunks. Using the MultiFiber Pro solution is 95% faster than manual testing using simplex or duplex fiber testers.

It also takes the complexity out of polarity testing while making cassette troubleshooting much easier.

Documentation is made easy with the LinkWare Results Management Software consolidating the results for all 12 fibers in a single report.

VERSIV

COPPER

FIBER

WIRELESS

INSTALLATION

TEST & INSPECTION



- Automatic scanning and testing of all fibers in MPO connectors to maximize installer productivity
- Ensures correct end-to-end connectivity of MPO trunk cables with built-in polarity verification to provide a high-quality installation
- On-board MPO connector reduces the complexity of fiber trunk testing by eliminating the need for fan-out cords
- The user interface displays all 12 fibers simultaneously for easy interpretation of test results and minimal navigation
- Troubleshoots links and drills down to a single fiber test result to minimize the learning curve when testing MPO cables





*High-magnification optics provide crisp, clear images of microscopic debris and end-face damage.*

*The FT500 FiberInspector™ Mini has a 200x magnification probe that enables inspection of both multimode and singlemode end-faces inside ports and on patch cords.*

New visibility where it matters most

# FT500 FiberInspector™ Mini Video Microscope

**The FT500 FiberInspector™ Mini is a portable video microscope that provides superior vision to inspect fiber while it's still in place.**

It works 10 times faster than traditional scopes – saving you valuable time inspecting installed fiber terminations in hardware devices and patch panels. Simply insert the dual-magnification video probe and inspect installed fiber connectors through the bulkhead adapters without accessing the backside of the patch panels. High-magnification optics and a bright, large display provide crisp, clear images of microscopic debris and end-face damage to ensure a smooth installation.

*Model numbers: FT500-INT, FT500-UK, FT525/INT*

VERSIV

COPPER

FIBER

WIRELESS

INSTALLATION

## Fiber Viewers

To ensure your termination is smooth, clean and ready for optical transmission, both Fiber Test Installer Packages include the Fluke Networks 200X FT120 multimode Fiber Viewer for inspecting fiber end-face contamination. Fluke Networks offers the FT140 Fiber Viewer with 400X magnification for more fine observations. Our Fiber Viewers contain a special safety filter to protect your eyes from harmful infrared rays.



Model numbers: FT120 (200x), FT140 (400x)

## VisiFault™ Visual Fault Locator

The laser-powered VisiFault Visual Fault Locator (VFL) traces fibers, verifies continuity and polarity, and helps find breaks in cables, connectors and splices. Continuous and flashing modes for easier identification. Compatible with 2.5mm and 1.25 mm connectors. Ruggedly constructed for demanding field-testing. Long 80+ hour battery life.



Model number: VisiFault

# Fiber Optic Cleaning Kits

The complete solution for precision end-face cleaning.

- Contains everything needed to eliminate the #1 cause of fiber link failure: contamination
- Supports all fiber connector types in datacenter and campus environments
- IBC™ OneClick Cleaners – no training required!
- Solvent pen precisely dispenses specially formulated fiber cleaning solution
- Cards for convenient cleaning of fiber end-faces
- Rugged carrying case stores and transports all cleaning tools



Model numbers: NFC-IBC-1.25MM, NFC-IBC-2.5MM,  
NFC-IBC-MPO & NFC-KIT-CASE-E

VERSIV

COPPER

FIBER

WIRELESS

INSTALLATION

## SimpliFiber Pro

SimpliFiber Pro is an affordable optical source and power meter kit for accurately measuring the loss of multimode and singlemode fiber links. Its rugged, handheld, ergonomic design is simple to use. Test at multiple wavelengths, save measurement results, and synchronize wavelengths automatically. Generate professional fiber reports with LinkWare PC software.



Model numbers: SFPOWERMETER (with interchangeable connectors), SFMULTIMODESOURCE (850/1300nm), SFSINGLEMODESOURCE (1310/1550nm), SFSINGLEMODE2 (1490/1625nm)

## Fiber Verification Kits

Whether you require basic fiber link testing capabilities or more advanced documentation and report generation, Fluke Networks' Fiber "Basic" and "Complete" Fiber Verification kits bring together the high-performance fiber test tools to inspect and test fiber installations quickly and easily.



Model numbers: FTK1450/E (Pro package shown), FTK1000 (Basic package)

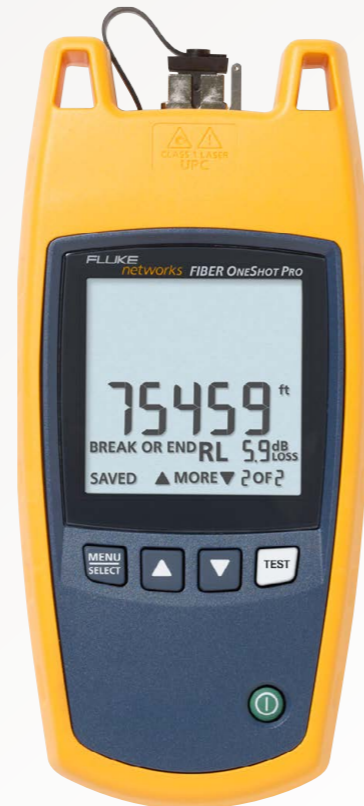


# Fiber OneShot™ PRO

**Analyzes fiber links and measures faults up to 15 miles in less than five seconds.**

- Measure up to 75,459 feet (23,000 meters) of fiber in seconds
- Locate severe bends, high-loss splices, breaks and dirty connectors in singlemode fiber
- Save and store up to 99 test results for later review
- Confirm channel connectivity by analyzing the fiber link
- Locate sources of bit-error rates caused by end-face contamination or poor connection leads
- Reports up to nine multiple events per fiber link

*Model numbers: FIBR-1-SHOTPRO, FIBR-1-KITPRO, FIBR-1-KITPRO-PM, FIBR-1-KITPRO-VF, FIBR-1-KITPRO-VFPM*



# Fiber QuickMap

Fiber QuickMap quickly and efficiently locates connections and breaks in multimode fiber with the press of one-button. Instantly (six second typical test time) provides distances to failures such as high loss and high reflectance incidents.



*Model numbers: FQM-MAIN, FQM-KIT, FTS900, FTS1000, FTS1100/E*

# fiber solutions for every budget



Every cable installation business has a unique customer base – and a unique path for getting the best return on its tools.

Fluke Networks provides the most flexible options for every budget – making it cost-efficient to get the fiber testing capabilities you need, as you need them. From simple loss test kits that interface with many of our instruments, to dedicated kits for multimode, and singlemode fiber, we provide advanced, easy-to-use tools to verify infrastructure performance and ensure high-quality connections.

VERSIV

COPPER

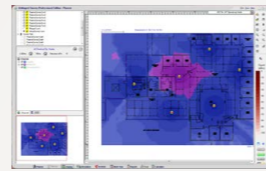
FIBER

WIRELESS

INSTALLATION



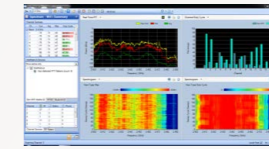
**AirMapper™ PRO**



**AirMagnet Survey PRO**



**AirMagnet WiFi Analyzer PRO**



**AirMagnet Spectrum XT**



**AirCheck**

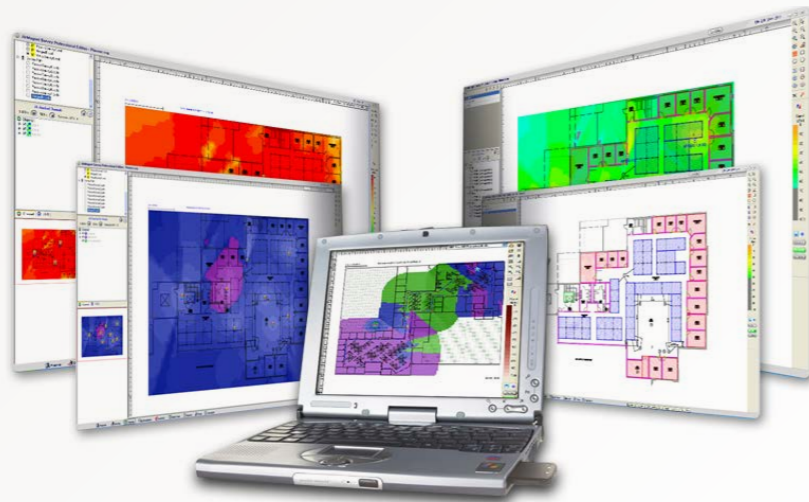
|  | AirMapper™ PRO | AirMagnet Survey PRO | AirMagnet WiFi Analyzer PRO | AirMagnet Spectrum XT | AirCheck |
|--|----------------|----------------------|-----------------------------|-----------------------|----------|
| <b>Plan Design &amp; Install</b>               | Good           | <b>BEST CHOICE</b>   | Fair                        | Good                  | Fair     |
| <b>WiFi Troubleshooting &amp; Optimization</b> | Fair           | Very Good            | <b>BEST CHOICE</b>          | Very Good             | Good     |
| <b>RF Interference Analysis</b>                | –              | Good                 | Good                        | <b>BEST CHOICE</b>    | Fair     |
| Price Level                                    | ★              | ★★★                  | ★★★                         | ★★                    | ★★       |
| <b>Survey Analysis</b>                         |                |                      |                             |                       |          |
| WLAN modeling and simulation                   |                | •                    |                             |                       |          |
| Single click automated AP placement modeling   |                | •                    |                             |                       |          |
| Single click network readiness verification    |                | •                    |                             |                       |          |
| Multiple simultaneous surveys                  |                | •                    |                             |                       |          |
| WiFi Throughput and RF Signal heat map         | •              | •                    |                             |                       |          |
| 802.11n coverage maps                          |                | •                    |                             |                       |          |
| <b>Performance Analysis</b>                    |                |                      |                             |                       |          |
| 802.11 a/b/g/n Analysis                        | •              | •                    | •                           |                       | •        |
| Device and Channel Utilization                 |                | •                    | •                           |                       | •        |
| One Touch connectivity tool                    |                |                      | Advanced                    |                       | Basic    |
| iPerf Throughput testing                       |                | •                    | •                           |                       |          |
| 802.11n 3 x 3 deployment and analysis          |                | •                    | •                           |                       |          |
| Roaming Analysis                               |                | •                    | •                           |                       |          |
| Built-in expert analysis                       |                | •                    | •                           |                       |          |
| <b>Security Analysis</b>                       |                |                      |                             |                       |          |
| Rogue device detection and location            | •              | •                    | •                           |                       | •        |
| Intrusion/security holes detection             |                |                      | •                           |                       |          |
| <b>Interference Analysis</b>                   |                |                      |                             |                       |          |
| Detection                                      |                |                      |                             | •                     | •        |
| Interference Source Classification & Location  |                | •*                   | •*                          | •                     |          |
| RF Spectrum Graphs                             |                |                      |                             | •                     |          |
| Recording and playback                         |                |                      |                             | •                     |          |
| <b>Other</b>                                   |                |                      |                             |                       |          |
| Remote Analysis                                |                |                      | •                           | •                     |          |
| Reporting                                      | standard       | extended             | extended                    | standard              | standard |
| Form Factor                                    | Mobile         | Software             | Software                    | Software              | Hardware |

\* Integration with AirMagnet Spectrum XT r+A13required for Non Wi-Fi interference source detection

## AirMagnet Planner

With the AirMagnet Planner wireless network-planning tool, you can create a WLAN model for any infrastructure vendor, that lets you build a map of Wi-Fi coverage and performance without having to deploy any APs. The map accounts for building materials, obstructions, AP configurations, antenna patterns. It also generates a bill of materials report so you can budget for exactly what you need.

AirMagnet Planner can be purchased as a standalone product (AM/A4012G) or as a fully integrated feature within AirMagnet Survey Pro (AM/A4018G).



## AirMagnet Survey

Site surveys are required for new installations where you need to calculate the number of APs required, determine the locations where they need to be placed and decide how they must be configured. Site surveys in existing installations, by contrast, verify the number of APs required versus the number actually deployed and validate their location and configuration to ensure optimal coverage and performance.

Compared to its Express version (AM/B4010G), the advanced features of the PRO license() allow users to:

- perform outdoor surveys voice-over-Wi-Fi (VoFi) surveys
- verify the WLAN's readiness for end-user, infrastructure and application requirements;
- conduct multiple and simultaneous surveys at a time;
- generate customized reports.



## AirMagnet WiFi Analyzer

Provides instant visibility into all wireless channels, devices, conversations, speeds, interference issues and the RF spectrum.

AirMagnet WiFi Analyzer is the industry-standard mobile tool for auditing and troubleshooting enterprise wireless networks. AirMagnet WiFi Analyzer helps IT staff quickly solve end-user connectivity and performance issues while automatically detecting security threats, wireless network vulnerabilities and regulatory compliance status. The built-in analysis engine, AirWISE®, automatically provides instant answers on problem causes, symptoms, fixes and how to avoid future occurrences.

Compared to its Express version (AM/B1170G), the AirMagnet WiFi Analyzer PRO also includes a full compliance reporting engine, which automatically maps collected network information to requirements for compliance with corporate policy and industry regulations.



## AirMagnet Spectrum XT

AirMagnet Spectrum XT is the first professional spectrum analyzer that combines and correlates in-depth RF analysis of non-Wi-Fi interference sources with real-time WLAN information.

The result is quicker and more accurate WLAN performance troubleshooting. By viewing the impact of RF interference on the network's overall performance, you can pinpoint the root cause of the problem immediately, and identify the source of interference such as Bluetooth, microwave ovens, cordless phones, digital video monitors, ZigBee devices, game controllers, RF jammers, wireless cameras, radars and more!



## TS100-Pro

The new TS<sup>®</sup>100 PRO Cable Fault Finder with PowerBT Bridge Tap Detect, is the best five-in-one tool for all telecommunication triple-play professionals. The TS100 PRO accurately locates multiple bridge taps in seconds on up to 975 metres of cable with the touch of one button and provides open/short circuit detection on links up to 2.4 kilometres. One-button testing requires no training, no complicated setup, expertise or interpretation.



Models: TS100-PRO-BT-TDR

## IS60 Pro-Tool Kit

Fluke Networks IS60 Pro-Tool Kit is the ultimate data/phone line installation and connection kit with Maglite & Sharpie. It is a professional tool you need to cut, strip, clean and connect network phone and data lines to blocks and jacks. It has all-in-one ergonomically designed pouch for convenient tool storage on belt to make your job easier.



Models: 112930000

VERSIV

COPPER

FIBER

WIRELESS

INSTALLATION

TOOLS

# JackRapid™ Punchdown Tool

**Patented jack termination tool allows you to terminate jacks 8 times faster.**

- Cuts installation time - easy to use handle, seats and cuts all wires at once, saving you up to 1 minute installation time per jack!
- High quality, consistent terminations - no more compromised connections and wasted jacks
- Simple, one-handed operation with an ergonomically designed handle reduces hand fatigue
- Unique design easily accommodates close-to-wall installation
- Replaceable blade head for use with multiple jack types from Ortronics (TJ5E00, TJ600 & TJ610), Panduit (NK688M), Leviton (41106, 41108, 5G108, 5G110, 61110, 6110G), Systimax (MPS100E, C5, M1BH, UNJ600/500/300, MGS400/500, MFP420/520) and ADC (KM8)



*Models: JR-ORT-2, JR-PAN-2,  
JR-LEV-1, JR-LEV-2, JR-SYS-UNI-1,  
JR-SYS-2, JR-ADC-2*

VERSIV

COPPER

FIBER

WIRELESS

INSTALLATION

## TS<sup>®</sup>19 Test Set

TS19 Test Set combines all the essential test set features at an affordable price. It features DataSafe™, Tone or Pulse operation, Talk/Monitor capabilities and last number redial.



Model numbers:  
19800009 & 19800003

## Pocket Toner<sup>®</sup> Series

The Pocket Toner<sup>®</sup> connects to any voice, data, or video cable to detect open/short circuits, continuity, AC/DC voltage\* and dial tone\* all while protecting up to 52 volts. The Pocket Toner comes in three models and several different kit configurations so no matter what your job, you can safely install and test. Include low-voltage circuit protection for both the unit as well as the detachable toner and dual audible indicators in the main body and detachable buzzer toner units.



Model numbers:  
Pocket Toner VDV kits: PTNX8-CT, PTNX8-CABLE,  
TNX8-DLX, PTNX8-VV-PRO & PTNX2-DLX  
Pocket Toner individual units: PTNX2, PTNX1 & PTNX8



# TS<sup>®</sup>54 TDR

## Premium Voice, Data, and Video Test Set

TS54 TDR is an all-in-one—TDR, toner and pair identifier—premium VDV test set that delivers 10 essential testing functions. The innovative TS54 TDR is perfect for VDV technicians and service provider technicians who need a best-in-class test set combined with a powerful TDR and toner.

The TS54 TDR Test Set comes complete with the latest advancements of patented features:

- RainSafe™ allows for weatherproofing to IP64
- DropSafe™ technology means they are rugged enough to be dropped from 20 ft (6 m) onto concrete and still operate
- DataSafe™ technology is able to detect POTS on live DSL lines with no interruption of service



TS<sup>®</sup>54 TDR

# Pro3000

## Analog Tone & Probe Kit

**Pro3000 Analog Tone & Probe Kit tones and traces wire.**

- Tone and trace wire on non-active networks
- SmartTone™ technology provides five distinct tones for exact pair identification
- Sends loud tone up to 10 miles (16 kilometers) on most cables
- Loud speaker on Probe makes the tone easier to hear through drywall, wood, and other enclosures
- Angled bed-of-nails clips allow easy access to individual pairs
- RJ-11 connector is ideal for use on telephone jacks
- Attach nylon pouch (included in kit) to your belt for easy transport



Models: 26000900

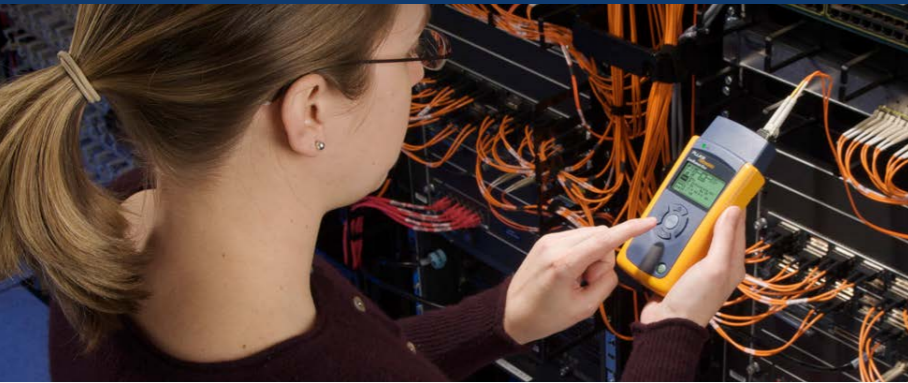
VERSIV

COPPER

FIBER

WIRELESS

INSTALLATION



## LinkRunner AT Network Auto-Tester

A handheld troubleshooter for 10/100/1G over copper or fibre connectivity issues. A single button AutoTest performs all the essential connectivity tests in 10 seconds, enabling you to accurately and quickly identify and solve network problems. Key features include, Connectivity Link, Auto-negotiation and IPV4/IPV6 Auto test, TruePower(tm) PoE testing, 802.1x authentication, cable wiremapping.

## NetTool™ Series II Inline Network Tester

Quickly troubleshoot network problems with powerful inline vision into 10/100/Gig traffic between switches, PCs, IP phones and other devices. Identify spyware, malware, and viruses with port monitoring; troubleshoot authentication issues with 802.1x log. Connect inline for visibility into VoIP calls to quickly diagnose IP phone boot-up and call control problems and to measure key call quality metrics.

## EtherScope™ Series II Network Assistant

The handheld EtherScope Analyzer troubleshoots Gigabit twisted pair and fiber optic LANs, and 802.11 wireless LANs. A one click Health Audit helps diagnosis and troubleshoot LAN health instantly with guided analysis and intelligent drill-downs to root cause. Validates network performance and service delivery by measuring key performance attributes and the availability and responsiveness of essential resources.

*Check out our complete line of Network Test Solutions at [www.flukenetworks.com](http://www.flukenetworks.com)*

VERSIV

COPPER

FIBER

WIRELESS

INSTALLATION



LinkRunner AT



AirCheck  
Wi-Fi Tester



NetTool Series II  
Inline Network Tester

|                                  | LinkRunner AT | AirCheck Wi-Fi Tester | NetTool Series II Inline Network Tester |
|----------------------------------|---------------|-----------------------|---|
| <b>Application Connectivity</b>  | BEST CHOICE   | BEST CHOICE           | Very Good                               |
| Price Level                      | ★★            | ★★                    | ★★★                                     |
| <b>Ethernet Tests</b>            |               |                       |   |
| Link Testing                     | •             |                       | •                                       |
| Ethernet Signaling               | •             |                       |   |
| Inline VoIP                      |               |                       | •                                       |
| <b>Discovery</b>                 |               |                       |   |
| VLAN Discovery                   | •             |                       | •                                       |
| Nearest Switch Discovery         | •             |                       | •                                       |
| VLAN Port Membership             | •             |                       | •                                       |
| <b>Network Services Tests</b>    |               |                       |   |
| Wired/Wi-Fi                      | Wired         | Wi-Fi                 | Wired                                   |
| DHCP & DNS                       | •             | •                     |   |
| Ping                             | •             | •                     | •                                       |
| Connect (TCP)                    | •             |                       | •                                       |
| <b>Traffic Analysis</b>          |               |                       |   |
| Protocol Statistics              |               |                       | •                                       |
| Application Protocol Recognition |               |                       | •                                       |
| <b>Test Documentation</b>        |               |                       |   |
| Reporting Software               | •             | •                     | •                                       |

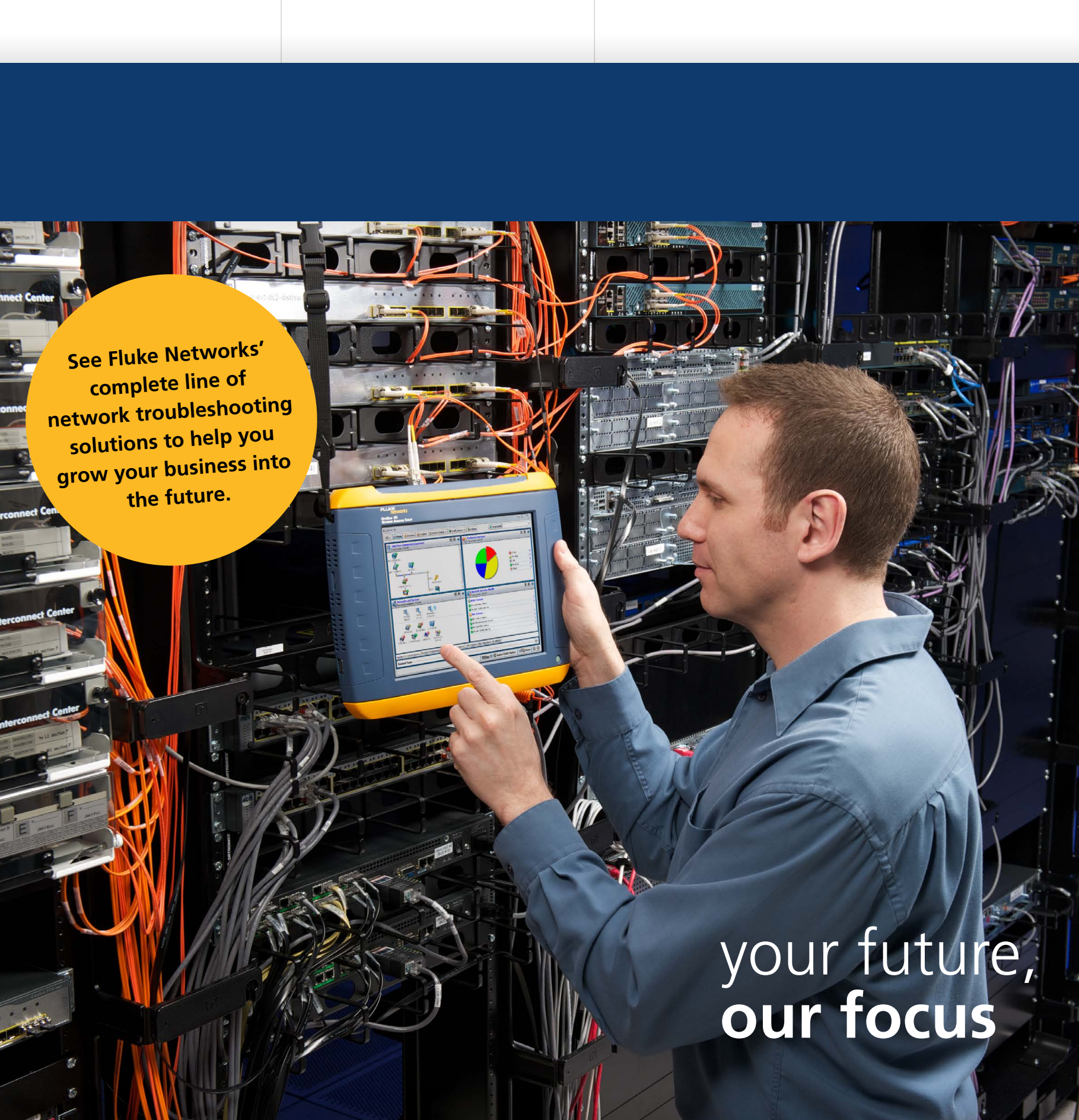
VERSIV

COPPER

FIBER

WIRELESS

INSTALLATION



See Fluke Networks' complete line of network troubleshooting solutions to help you grow your business into the future.

At Fluke Networks, we keep our eye on the future so that you don't have to. We know where the industry's going. Just as important, we know how to help you get where you want to go within it – with fast, accurate, easy-to-use solutions that support your growth every step of the way. When you're ready to take your business to the next level, we can help you expand your copper and fiber certification solutions. Step up to network infrastructure diagnostic services. And provide complete network infrastructure maintenance services. Our award-winning hardware and software products, together with unbeatable support and training, give you unique solutions to master the most important upgrade path of all: your future.

your future,  
our focus

VERSIV

COPPER

FIBER

WIRELESS

INSTALLATION