

**Touchboards**

205 Westwood Ave, Long Branch, NJ 07740  
Phone: 866-94 BOARDS (26273) / (732)-222-1511  
Fax: (732)-222-7088 | E-mail: [sales@touchboards.com](mailto:sales@touchboards.com)

- WUXGA 7500 Center Lumens
- Lens shift
- Extensive lens options
- Dual lamp

# EH7700

*Spectacular image quality, outstanding  
brightness and ultimate reliability*



## PRO | SCENE

The Optoma ProScene Series is an elite line up of projectors designed for challenging applications that demand a maximum level of technical ingenuity, quality manufacturing and specialized support services. Each ProScene projector delivers outstanding brightness and unsurpassed image quality.

High-end AV installations utilizing ProScene, offer authorized dealers excellent margin opportunities. With dedicated field sales and engineering teams, Optoma is committed to service excellence. So wherever your next installation takes you—from selection, to installation, and beyond—go there with ProScene.

- ✓ Large venues
- ✓ Auditoriums
- ✓ Conference rooms
- ✓ Post production
- ✓ Higher education
- ✓ Boardrooms
- ✓ Digital signage
- ✓ Theatre
- ✓ Lecture halls
- ✓ Broadcast studios
- ✓ Stage shows
- ✓ Trade shows
- ✓ Houses of worship
- ✓ Large classrooms
- ✓ Live events
- ✓ Museums
- ✓ Exhibitions
- ✓ Meeting rooms



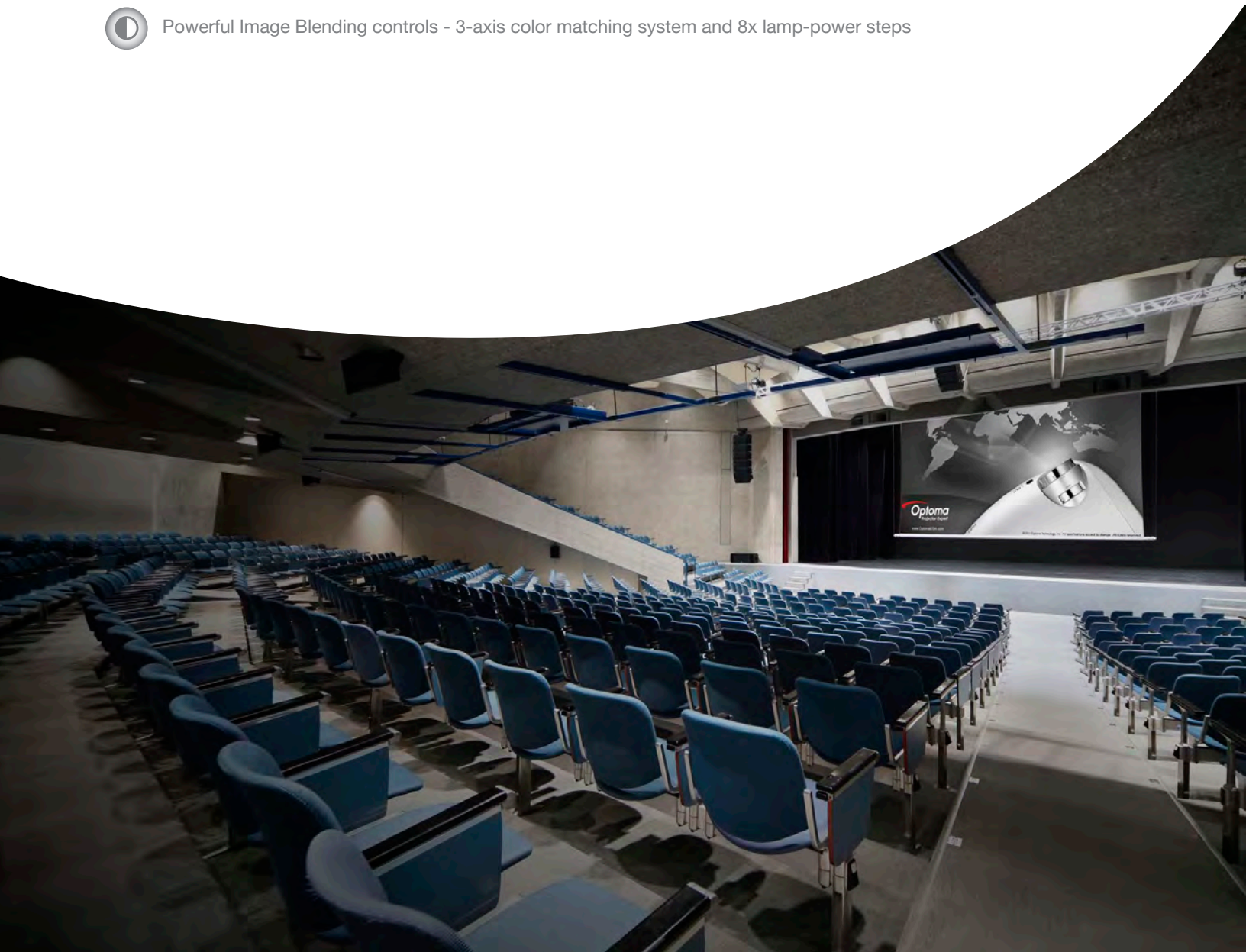


# Features



## **EH7700 features**

-  7500 Center Lumens, WUXGA Resolution, Dual Lamp
-  360° Installation flexibility - 5x Motorized Lens options and 360° Operation
-  Live performance ready - Mechanical shutter, safety mounting points and flying frame options
-  Ultimate Control - Full support for Crestron, Extron, AMX, PJ-Link and Telnet LAN commands
-  Powerful Image Blending controls - 3-axis color matching system and 8x lamp-power steps



# Image Quality



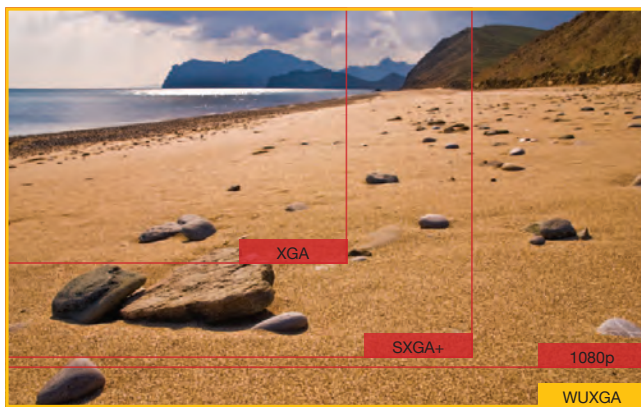
Superb image quality is at the heart of every Optoma ProScene product design. At every step, starting from the incredibly reliable, high resolution WUXGA DLP® chip, where the image is initially created, via the P-VIP lamp pulsing technology that fine tunes the color to exacting standards, through to the precision optics to focus the image on a screen, accuracy and integrity of the image are paramount.

Optoma ProScene chose DLP® technology for its image quality and unmatched reliability. The reflective nature of DLP® micro-mirror technology provides highly efficient bright images with great contrast while maintaining precise color accuracy and natural, real-world color reproduction. For demanding professional applications, the proven reliability of DLP® technology makes it the obvious choice.

## P-VIP lamps

The dual Osram 350W P-VIP lamps in the Optoma EH7700 provide the highest possible luminance, the essential prerequisite of all highly-efficient projectors. These lamps stay brighter for longer, provide a long operating life and a low loss of luminous flux throughout that life. In addition, the lamp drivers are specifically tuned for the lamps, ensuring not only optimum operating conditions for every situation, but also provide sophisticated lamp pulsing modes and the assurance that color can be fine tuned according to the application.

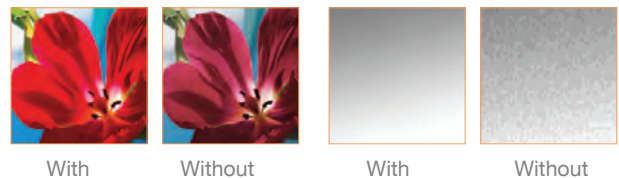
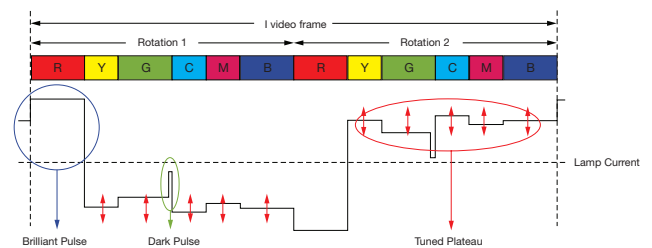
## Image color and size control



Where detail really matters, the full WUXGA (1920 x 1200) resolution offers 15% more pixels than 1080p and 60% more than SXGA+. This enables unscaled Full HD video and extra detail. Time Code information can be displayed onscreen at the same time, perfect for soundtrack recording & video editing where precise timing can be critical.

## Lamp Pulsing Technology

Advanced lamp-pulsing technologies enable color performance to be fine tuned directly from the lamp. This unprecedented control helps create vibrant, perfectly saturated colors across the whole light spectrum and produces stunningly natural, life-like images.



## Amazing Color

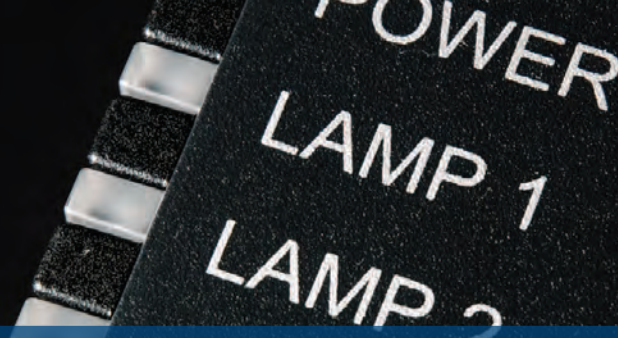
The EH7700 incorporates BrilliantColor™ technology to produce stunningly bright images with perfectly balanced life-like colors.

## Precision Optics

Aspherical optical elements and the use of Low Dispersion (LD) glass maintain optimum sharpness and focus uniformity over the entire image. The ProScene insistence on uncompromising optical quality ensures extremely low color flare and chromatic aberration resulting in a crystal clear, high contrast image.







All Optoma ProScene projectors are designed for continuous 24/7 operation. Only the most reliable, industry proven components are used to ensure superior reliability. This hard-earned “capability” has been meticulously developed over a decade of designing, manufacturing, and supporting millions of projectors the world over. The dust-sealed, filter-free design in the Optoma EH7700 prevents dust and dirt from affecting the system – ensuring optimal image quality with minimal maintenance. ProScene customers can therefore be confident that, as one of the most reliable projector brands in the industry today, Optoma has a reputation for service excellence that is well deserved.



## Dual Lamps

Dual lamps enable a level of reliability simply unavailable with a single lamp projector. Both lamps can be used together to achieve maximum brightness, while still providing redundancy should one of the lamps fail. Alternatively a single lamp can be used in Relay Mode to combine the full lifetime of each individual lamp and thereby minimize service intervals.



## DLP® Technology

DLP® technology from Texas Instruments® is widely recognized and acclaimed for its unmatched reliability and long lasting image performance. When combined with high brightness and native contrast ratios, it becomes the obvious choice for demanding applications. Independent testing has proven DLP® to be the most reliable of projector technologies. While other technologies may show image quality decline after only a few thousand hours, DLP® technology can remain unchanged over hundreds of thousands of hours.



## Lamp Relay mode

For challenging installations where the EH7700 is run for long periods, the Lamp Relay function can be used to automatically switch between lamps.



## Total Cost of Ownership

For demanding applications the total cost of ownership of a projector is not in the purchase cost and replacement lamps but in expensive maintenance and service. Optoma ProScene projectors require very little maintenance, have no user serviceable parts inside and no filters that require periodic replacement. The result is low cost, predictable service cycles, enabling planned down time to be minimized.

We are so confident that the EH7700 image color quality will remain as good as the day you bought it that Optoma will guarantee it for five years.



# Flexibility

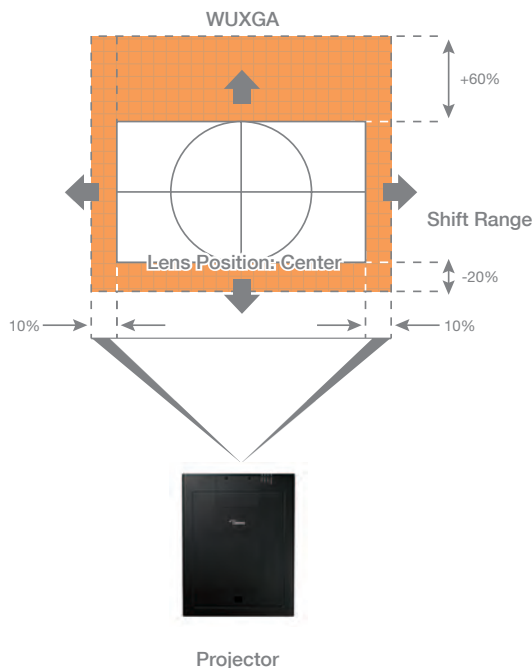
## Installation Flexibility

To help meet the seemingly limitless challenges of ProAV installations the EH7700 provides 5 lens options with motorized zoom and focus to ensure you can get the image size you require. Motorized lens shift helps you get the image exactly where you want it and the 2 color wheel options ensure you can match the image quality and brightness exactly to the application's requirements.



There are 5 optional lenses, 4 of which can be easily adjusted via motorized lens-shift, zoom and focus.

## Motorized Lens Shift



## 360° Projection Capability

Images can be projected over a full 360° range along the vertical axis, including reproduction on a ceiling or floor.



## Picture-in-Picture and Side-by-Side display

Display 2 sources simultaneously with a small inset from the main image or display both sources side by side.

## Interchangeable color wheels

Two color wheel options ensure the performance characteristics of the EH7700 can be tailored to match the application. The standard color wheel maximizes brightness while ensuring good color reproduction, whereas the enhanced-color "video" wheel maximizes color performance and accuracy. The color wheels are interchangeable modules and can be fitted or exchanged on site without removing the projector cover.



Bright (Standard)



Video (Optional)

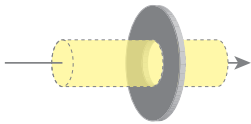
## Lens Options

					
<b>Optoma model name</b>	<b>BX-DLWT1</b>	<b>BX-DLWT2</b>	<b>BX-DLST1</b>	<b>BX-DLTZ1</b>	<b>BX-DLTZ2</b>
Throw Ratio	0.78	1.22 ~ 1.47	1.45 ~ 1.95	1.93 ~ 3.71	3.68 ~ 7.04

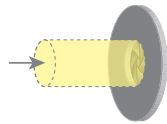
# Flexibility

## Mechanical Shutter

In situations where only absolute darkness is good enough, the EH7700 has a mechanical shutter to provide total blackout. Perfect for scene changes during live performances.



Open: Normal image



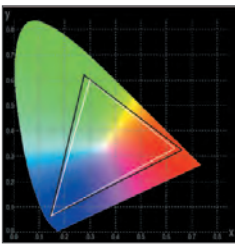
Closed: Blackout

## Edge Blending Controls

No two projectors are completely identical. When performing complex, or even simple edge-blend projects using multiple projectors, it can be difficult to achieve good results if the images do not match. The EH7700 incorporates the following features to ensure high quality and consistent results.

## Color matching

The EH7700 has a full 3-axis color matching system, which combined with accurate measurements can create seamless blends every time.



## Brightness matching

The brightness of a projector will vary throughout its life. To correctly match multiple units, the EH7700 has 8x lamp power steps between 80~100% full brightness.



Without



With

## Safety mounting points

To complement the existing ceiling mount, Kensington™ lock and password security features of all ProScene models, the EH7700 benefits from the addition of 2x M8 safety mounting points with supplied eye-bolts.



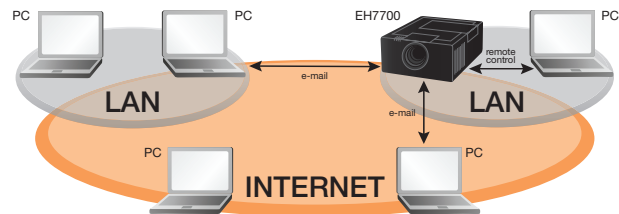
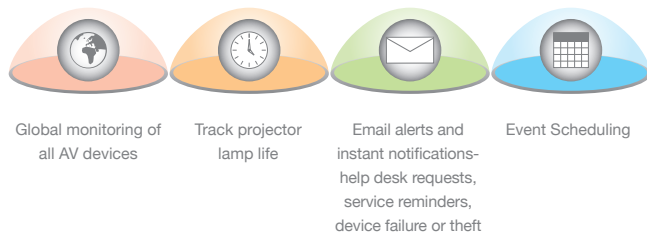


# Control



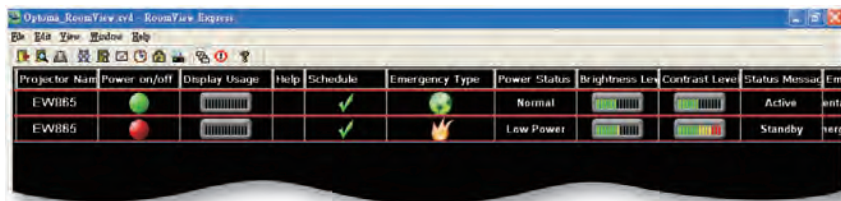
## System Integration Control

Multiple Optoma EH7700 projectors can be monitored over LAN and also provide the user with an email message alert in case an error occurs or a lamp fails or needs to be replaced, using Crestron Roomview. While the web browser interface and full support for Extron's IP Link, AMX dynamic device discovery and PJ-Link protocols, allow almost all aspects of the EH7700 to be controlled across a network, keeping you in control, wherever you are.



## Ultimate control

Cut up to 30% from your energy bills using 24-hour automated power scheduling to ensure that projectors power off when not in use.



Download Crestron RoomView® Express for free at [www.crestron.com/getroomview](http://www.crestron.com/getroomview)

## Help Alert

Real-time interactive Help Desk requests are sorted to come to the top. The Help Desk then has the ability to respond with an automatic message or instant message the room with exact procedures.

## Display Power

Check on/off status of display power and system power. View a bar graph to monitor the percentage of available projector lamp life and set an alert to notify the services department when a replacement lamp should be ordered before the lamp fails.

## Display Usage

## Schedule Event

RoomView Express makes scheduling of recurring or one time events easy. Setting RoomView to automatically power down at midnight throughout the week can save valuable lamp life and ensure security inside the facility.

## Selected View by Rooms, Attributes or Contacts

RoomView Express gives you the ability to simultaneously view more than 250 rooms from a single screen. Customize RoomView to view by room name, locations and group

## Room Name and Location (sortable)

## Online Status

## Event Log

Automatically generates log files, reports and charts to analyze ROI and budget allocation. Track device usage, call statistics and user history.

## Projector Power





## Lens Options

					
<b>Optoma model name</b>	<b>BX-DLWT1</b>	<b>BX-DLWT2</b>	<b>BX-DL1ST1</b>	<b>BX-DLTZ1</b>	<b>BX-DLTZ2</b>
Focal Length (f) (mm)	11.73	18.1 ~ 21.72	21.5 ~ 28.7	28.6 ~ 54.33	54.06 ~ 102.7
F number	2.2	2.0 ~ 2.3	2.0 ~ 2.3	2.2 ~ 3.0	2.3 ~ 3.16
Zoom Range (Ratio)	Fixed	1.2x	1.33x	1.9x	1.9x
Zoom & Focus Adjustment	Fixed	Motorized			
Throw Ratio	0.78	1.22 ~ 1.47	1.45 ~ 1.95	1.93 ~ 3.71	3.68 ~ 7.04
Throw Distance (m)	0.5 ~ 8.4	0.79 ~ 15.8	0.94 ~ 21.0	1.25 ~ 40.0	2.38 ~ 75.8
Throw Distance (feet)	1.65 ~ 27.6	2.59 ~ 51.9	3.07 ~ 68.9	4.09 ~ 131.1	7.8 ~ 248.7
Projection Image Size	30" ~ 500" inches				
Motorized Lens Shift	Fixed	Horizontal: + / - 10% offset Vertical: - 20%~ + 60% offset			

## Throw Distance Chart

EH7700 Throw Distance									
Diagonal Image Size	BX-DLWT1	BX-DLWT2		BX-DL1ST1		BX-DLTZ1		BX-DLTZ2	
	Fixed (m)	Min (m)	Max (m)	Min (m)	Max (m)	Min (m)	Max (m)	Min (m)	Max (m)
50"	0.84	1.3	1.58	1.56	2.1	2.08	4.0	3.97	7.58
60"	1.01	1.56	1.9	1.87	2.52	2.49	4.8	4.76	9.1
70"	1.18	1.82	2.20	2.19	2.94	2.91	5.59	5.55	10.61
80"	1.35	2.08	2.53	2.5	3.36	3.33	6.39	6.34	12.13
100"	1.68	2.61	3.16	3.12	4.2	4.16	7.99	7.95	15.16
150"	2.52	3.91	4.75	4.68	6.3	6.24	11.99	11.89	22.75
200"	3.36	5.21	6.33	6.25	8.4	8.32	15.98	15.86	30.33
250"	4.2	6.52	7.92	7.81	10.5	10.39	19.98	19.82	37.91
300"	5.04	7.82	9.5	9.37	12.6	12.47	23.97	23.78	45.49

For guide purposes only



205 Westwood Ave, Long Branch, NJ 07740  
 Phone: 866-94 BOARDS (26273) / (732)-222-1511  
 Fax: (732)-222-7088 | E-mail: sales@touchboards.com

## Eco Friendly

Cut up to 30% from your energy bills using 24-hour automated power scheduling to ensure that projectors power off when not in use.



### Direct Power On

The projector will start up instantly when power is supplied to the Unit. This eliminates the need to manually turn on the projector via the remote control or the keypad, ideal for use in rooms with a “master” power switch.



### Signal Power On

The projector will power on when it receives a signal through one of the PC/video inputs. This ensures that the projector is only switched on when it is needed.



### Auto Power Off

If after a pre-determined time the projector does not receive a signal, it will turn itself off automatically, conserving power and extending the life of the lamp.



### Eco Standby Mode

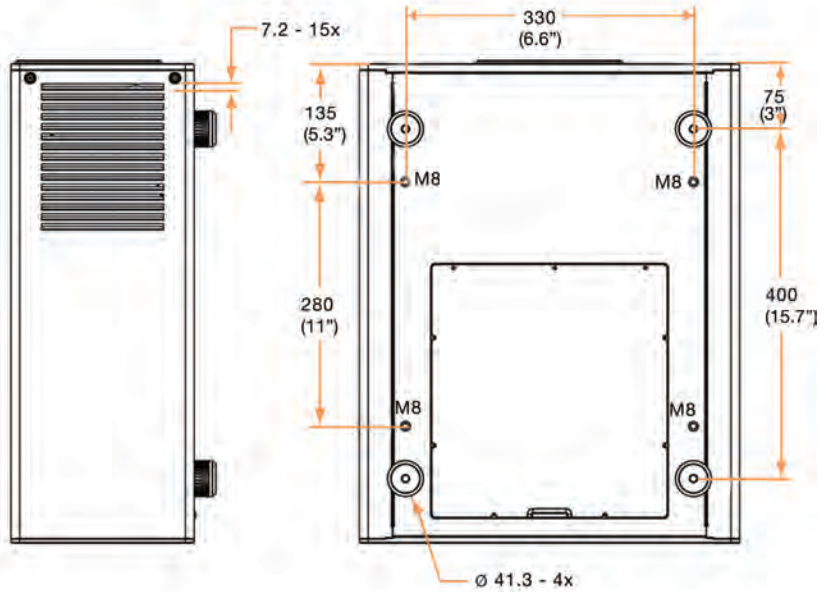
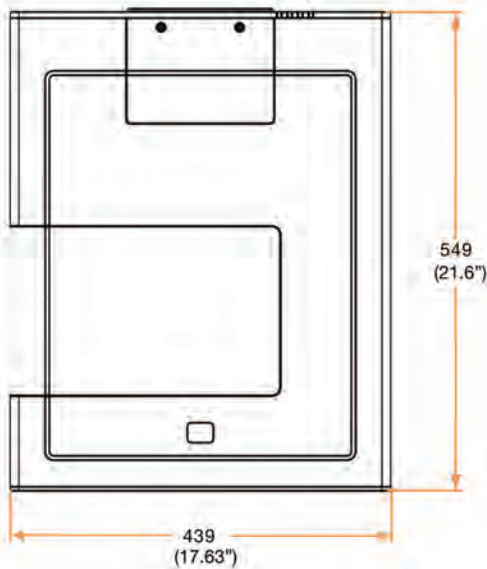
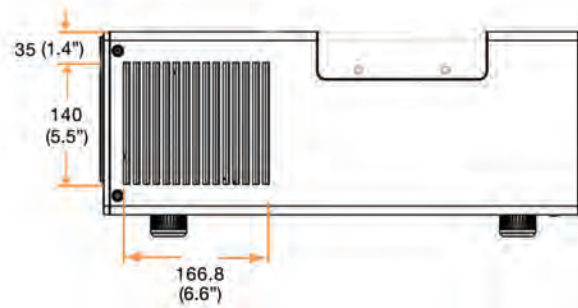
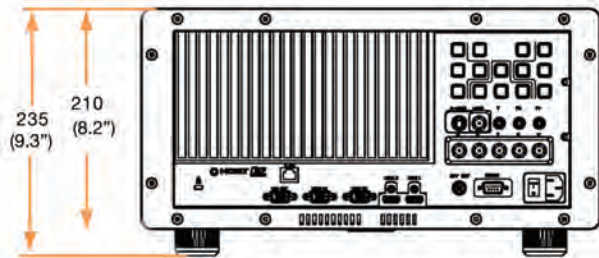
Reduces energy consumption to less than 0.5W when the projector is not in use.



We know that improving our products is the best way to reduce our impact on the environment. That's why at Optoma, we design our products to have a long usable life, use fewer materials, ship with the minimum packaging and be free of all possible toxic substances. Naturally, energy efficiency and being recyclable are built in at the design stage. With each new product, we strive towards minimising our environmental impact. For full details of Optoma Project Green please visit our website.



# Dimensions



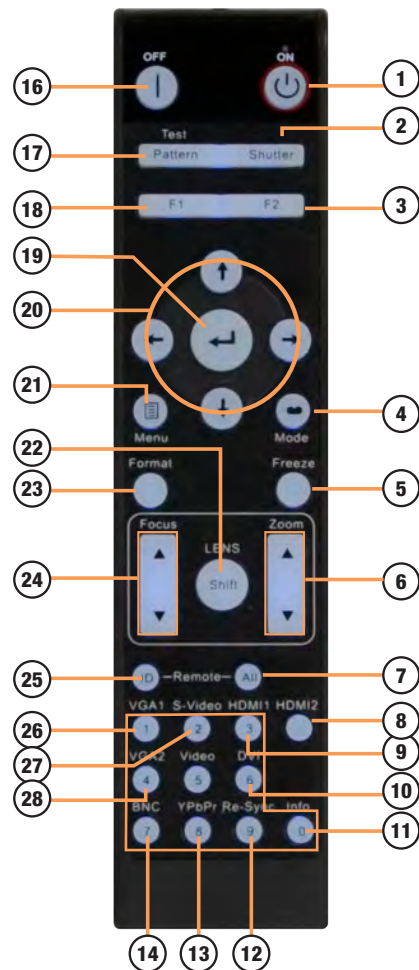
All measurements are in mm



# Labelling

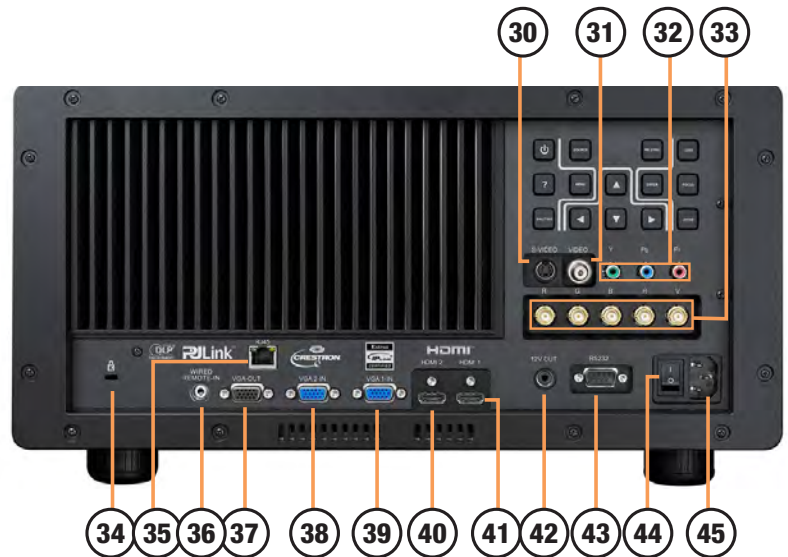
## Easy to use remote control

- 1 Power On
- 2 Mechanical Shutter
- 3 Function 2 (user assigned)
- 4 Display Mode
- 5 Freeze
- 6 Lens Zoom +/-
- 7 Remote ID (All)
- 8 HDMI 2
- 9 HDMI 1
- 10 DVI (dependent on model)
- 11 Information Panel
- 12 Re-Sync
- 13 Video
- 14 YPbPr
- 15 Numbered keypad (for remote ID / security input)
- 16 Power Off
- 17 Test Pattern
- 18 Function 1 (user assigned)
- 19 Enter/Help (user assignable)
- 20 Four Directional Select Keys
- 21 Menu
- 22 Lens Shift
- 23 Format (Image Aspect Ratio)
- 24 Lens Focus +/-
- 25 Remote ID
- 26 VGA 1
- 27 S-Video
- 28 VGA 2
- 29 BNC



## Input/Output Connections

- 30 S-Video
- 31 Composite Video (CVBS via BNC)
- 32 Component Video (YPbPr)
- 33 BNC (YPbPr/RGBHV)
- 34 Kensington™ Lock Port
- 35 RJ-45
- 36 Wired Remote (3.5mm)
- 37 VGA-Out (Monitor Loop-through)
- 38 VGA2-In (YPbPr via adapter)
- 39 VGA1-In (YPbPr via adapter)
- 40 HDMI 1
- 41 HDMI 2
- 42 +12V Trigger (3.5mm, 250mA)
- 43 RS-232 (9-pin D-Sub)
- 44 Power Switch
- 45 Power Socket



## Keypad

- 46 Power
- 47 Source
- 48 Re-Sync
- 49 Lens Shift
- 50 Info
- 51 Menu
- 52 Enter
- 53 Focus
- 54 Shutter
- 55 Control Keys
- 56 Zoom



# Technical Specifications



Projector		DLP™ Technology by Texas Instruments
Technology		0.67" WUXGA, DC3, Type A chip
Resolution		Native WUXGA (1920 x 1200)
Brightness - Dual Lamp		7000 ANSI lumens / 7500 center lumens using standard lens and "Bright" color wheel
Aspect Ratio		16:10 native, 4:3 & 16:9 compatible
Refresh Rate		15kHz to 100kHz / 25Hz to 85Hz
Contrast		5000:1
Video Compatibility		PAL (625/576i/p), SECAM, NTSC (525/480i/p), HDTV (720p, 1080i, 1080p)
Optics		
Lamp Type		2x 350W P-VIP
Lamp Life		2000 hr bright mode / 2500 hr ECO mode (5000 hr ECO relay mode)
Color Wheel Options		Bright wheel 6 Segment RGBCYW (standard) Video wheel 6 Segment RGBCYM (optional)
Shutter		Mechanical
Lens Shift		Motorized lens shift, focus and zoom (+60% -20% V, ±10% H)
Lenses (no lens supplied as standard)		
BX-DLWT1		Short throw 0.78 (Fixed)
BX-DLWT2		Wide 1.22~1.47 (1.2x zoom)
BX-DLST0		Standard 1.45~1.95 (1.33x zoom)
BX-DLST1		High quality 1.45~1.95 (1.33x zoom)
BX-DLTZ1		Long 1.93~3.71 (1.9x zoom)
BX-DLTZ2		Extra long 3.68~7.04 (1.9x zoom)
Keystone Correction		Vertical ±20°
Uniformity		95% (center)
Connectivity		
Inputs		2 x HDMI (with locking screw) BNC (RGBHV) PC RGB 2 x 15 Pin D-Sub VGA Component 3RCA S-Video/Composite 4 pin Mini DIN / RCA
Output		PC (monitor loop-through) VGA Out +12V trigger (3.5mm jack)
Control and Communication		RS-232 9pin D-SUB RJ45 (Crestron/Extron/PJ-Link/Telnet) Wired Remote (3.5mm jack)
General		
Noise Level		39dB
Weight		59.2 lb (without lens)
Dimensions (W x D x H)		17.2" x 9.3" x 21.6" 139 x 549 x 235mm (Dimensions in mm)
Power Requirements		100 – 240V AC @ 50 – 60Hz
Power Consumption		907W bright mode < 0.5W standby mode
Heat Dissipation		3416 BTU/hr.
Operating Conditions		730W ECO mode < 0.5W standby mode 5 ~ 40°C, max. humidity 85%, max. altitude 3000m
Portrait mode <sup>1</sup>		Not supported
360° Operation		Yes (Around horizontal axis)
Operating Temperature		41-104°F (0 ~ 750m, 5 ~ 40°C) 41-95°F (750m ~ 1500m, 5 ~ 35°C) 41-86°F (1500 ~ 3000m, 5 ~ 30°C)
Environmental Conformances		RoHS and WEEE CE, TUV-GS, CB
Security		4-digit PIN code Kensington Lock port
Warranties		2x M8 Safety Mounting Points (Eye Bolts supplied) 3-Years
Supplied Accessories		
Cables		VGA cable AC power cord
Other		Infra-red remote control (selectable IR code sets for controlling multiple units) Batteries x 2 User manual CD Quick start card Warranty card

## Heavy Duty Flush Mount in Black, Max Weight Capacity 250 lb

Part #: BM-9002N

### Features:

- Micro adjustments allow you to quickly achieve registration
- Independent roll, pitch and yaw adjustments for quick and precise projector registration
- Multiple installation options: flush mount to ceiling, use 0.5" threaded rods, use a 1.5" NPT extension column
- Quick connect/disconnect for convenient projector integration convenience
- Cable management through top of the mount without additional accessories

### Specifications

- Roll: +/-5°
- Pitch: +/-20°
- Yaw: 360°
- Horizontal Adjustments: 1.5" in any direction
- Weight Capacity: 250 lbs (113.4 kg)
- Color: Black
- Dimensions: 17" x 9.3" x 3.8"
- Shipping Dimensions: 24" x 18" x 10"
- Shipping weight: 21 lb
- UPC Code: 79643504 113 7
- Projector Compatibility: EH7700, TH7500, PRO8000



## Six-segment video color wheel

Part #: BZ-8JN07

Six-segment video-tuned color wheel designed for applications that require the finest level of video performance and accuracy.



## Bright Data Color Wheel

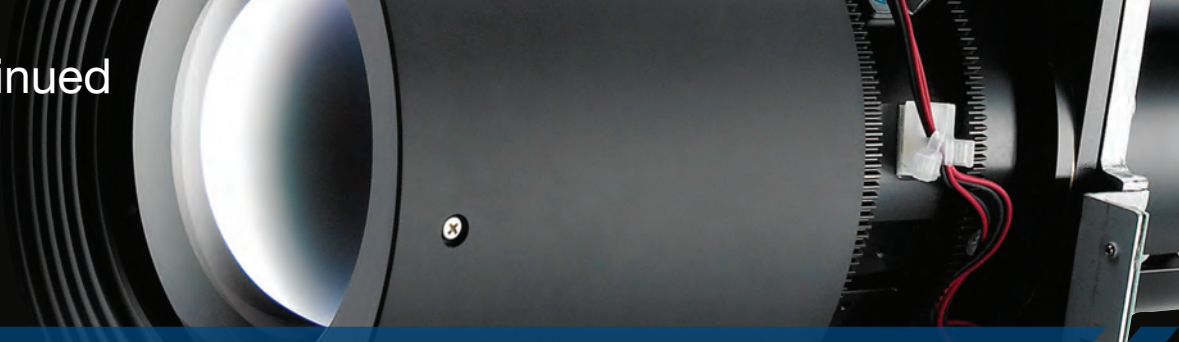
Part #: BZ-8JN06

The Optoma EH7700 ships standard with a six-segment enhanced data color wheel designed to deliver maximum presentation performance and color fidelity.





# Accessories Continued



## Lamp: BL-FP350C: 350W P-VIP lamp

Part #: BL-FP350C

Genuine Osram 350W P-VIP replacement lamps from Optoma deliver the highest luminance on your EH7700. They stay brighter for longer and provide optimum operating life. Use genuine replacement parts from Optoma for best possible performance.



## EH7700 24/7 Maintenance Program

The Optoma 24/7 Maintenance Program is designed to provide customers with optimal projector performance in extended use applications. This program provides scheduled maintenance so you can plan ahead and ensure your projector's down-time will be kept to a minimum as much as possible. Simply purchase a 24/7 maintenance kit and send your projector to Optoma for scheduled maintenance when you reach 10,000 hours of projector usage. To schedule your maintenance, contact Optoma's customer service team, and Optoma will handle the entire process.

### Part #: BW-M03

24/7 Maintenance (Provides maintenance 1 time during the warranty period. Maintenance is required every 10,000 hours in 24/7 applications.)

### Part #: BW-M04

24/7 Maintenance with Loaner Unit (Provides maintenance 1 time during the warranty period. Maintenance is required every 10,000 hours in 24/7 applications.)



Image courtesy of artist Micah Stansell, The Water and the Blood, High Museum of Art, Atlanta GA. Photo by Blake Williams. Projectors by Optoma.

# Accessories Continued

## Optimized edge blending (Available direct from Optoma)

Optoma have worked in partnership with Calibre to produce special versions of Calibre's edge blending and warping products optimized for use with our ProScene projectors. This unique collaboration significantly reduces the complexity and configuration time required to edge blend multiple ProScene projectors and is covered by the industry leading ProScene technical support services should you require assistance with your edge blending project.



### HQView320 HQT™ Scaler with Warp and Edge Blend

Best in class professional image processing in a compact affordable module.



### HQView325 HQT™ Scaler with Warp Mapping Edge Blend & HDMI/DVI In/Out

HQView325 features 4-sided soft edge blend with multi-region black level correction for seamless blending of multiple projectors.



### HQView520 Universal HQT™ Scaler-Switcher-Scan Converter with Warp, Edge Blend & 3G-SDI In/Out

Use as a routing switcher and universal interface for 3G-SDI, HD-SDI, DVI or HDMI



### HQView530 LED Screen HQT™ Scaler-Switcher with 3G-SDI

LEDView530 is a highly flexible LED video screen image scaler which provides stunning image quality for professional, broadcast, sports, digital signage & corporate AV.



## Worldwide technical and commercial support

### Optoma USA

#### Optoma USA Headquarters

3178 Laurelview Ct.  
Fremont, CA 94538  
Tel: (510) 897-8600  
Fax: (510) 897-8601

### Optoma Europe

#### Optoma Europe Ltd.

42 Caxton Way  
The Watford Business Park  
Watford  
Hertfordshire  
WD18 8QZ  
UK  
Tel: +44 (0) 1923 691 800  
Fax: +44 (0) 1923 691 888

#### Optoma Deutschland GmbH

WIESENSTRASSE 21  
D40549 Düsseldorf  
Germany  
Tel: +49 (0) 211 506 6670  
Fax: +49 (0) 211 506 66799

#### Optoma France

Batiment E  
81-83 avenue Edouard Vaillant  
92100 Boulogne Billancourt  
France  
Tel: +33 (0) 1 41 46 12 20  
Fax: +33 (0) 1 41 46 94 35

#### Optoma Spain

C/ José Hierro,36 Of. 1C  
28529 Rivas VaciaMadrid  
Madrid  
Spain  
Tel: +34 91 499 06 06  
Fax: +34 91 670 08 32

#### Optoma Benelux

Optoma Benelux BV  
Randstad 22-123  
1316 BW Almere  
The Netherlands  
T: +31 (0) 36 820 0252  
F: +31 (0)36 548 9052

### Local Representatives

Turkey  
UAE  
Poland  
Russia  
Italy

### Optoma Scandinavia

#### Optoma Scandinavia

Lerpeveien 25  
Postboks 9515 Åskollen  
3038 Drammen  
Norway  
Tel: +47 32 98 89 90  
Fax: +47 32 98 89 99

### Optoma Asia

#### Taiwan

Optoma Corporation  
Taipei Office  
5F., No. 108, Minchiuan Rd., Shindian City,  
Taipei Taiwan 231, R.O.C.  
Tel: +886-2-2218-2360  
Fax: +886-2-2218-2313  
<http://www.optoma.com.tw>

#### Taichung Office

7F-5, No.3, Lane 2, 1st Rd, Taichung Industrial  
Park, Xitun Dist., Taichung City, 40767, Taiwan,  
R.O.C.  
Tel: +886-4-3505-0336  
Fax: +886-4-3505-0338

#### Kaohsiung Office

Rm. D, 7F, No.108, Zhonghua 3rd Rd., Qianjin  
Dist., Kaohsiung City 80145, Taiwan, R.O.C.  
Tel: +886-7-952-5689  
Fax: +886-7-241-2197

#### Beijing Office

20D apartment 3, Build No.3, Yindu Tower, No  
48 ZhiChun road, HaiDian district, Beijing  
Tel: +86-10-5873-1919  
Fax: +86-10-5873-1919 \*8018

### China

Shanghai Office  
5F, No. 1205 Kaixuan Road, Changning  
District, Shanghai  
Tel: +86-21-6294-7376  
Fax: +86-21-6294-7375  
<http://www.optoma.com.cn>

#### ShenYang Office

Room1201, building C3, Wulihe Tower, No 4-1  
WenTi road, HePing district, ShenYang  
Tel: +86-024-3188-7018  
Fax: +86-024-3188-7018-808

#### Xi'an Office

Room 1310, building B, ShiMao tower,  
GuanDongZheng street, Xi'an  
Tel: +86-029-8228-2428  
Fax: +86-029-8228-2428

#### GungZhou Office

Room 602, NanTie Tower, No.57  
No.1ZhongShan road, YueXiu district,  
GungZhou  
Tel: +86-20-6128-0990 / 6128-1025  
Fax: +86-20-6128-1027

#### ChongQing Office

Room 9-2, building 19 HuaYuMingDu,  
ShiQiaoPu, ChongQing  
Tel: +86-23-6879-7626  
Fax: +86-23-6879-7725

#### ChengDu Office

Room A3 floor 20, building A Time digital  
square, No.1 South RenMin road, ChengDu  
Tel: +86-28-8523-1553 / 8631-7092

#### Hong Kong Office

Unit A, 27/F., Dragon Centre, 79 Wing Hong  
Street, Cheung Sha Wan, Kowloon, Hong Kong  
Tel: +852-2396-8968  
Fax: +852-2370-1222  
<http://www.optoma.com.hk>





**Optoma Technology Inc.**  
3148 Laurelview Ct, Fremont, CA 94538  
[www.optomausa.com](http://www.optomausa.com)

**Touchboards**  
205 Westwood Ave, Long Branch, NJ 07740  
Phone: 866-94 BOARDS (26273) / (732)-222-1511  
Fax: (732)-222-7088 | E-mail: [sales@touchboards.com](mailto:sales@touchboards.com)



<sup>1</sup>Restrictions may apply, please check the Optoma website for more information. Brightness and lamp lifetime will vary depending on selected projector mode, environmental conditions and usage. As is common with all lamp based projectors, brightness will decrease over the lamp lifetime. Typical lamp life achieved through testing. Will vary according to operational use and environmental conditions. Optoma guarantees that in normal use, Optoma DLP® color quality will be indistinguishable from when new. Exclusions: (a) Guarantee is voided if the projector is subject to damage through misuse, (b) Guarantee may be void in industrial or commercial entertainment environments where dust or smoke is excessive (c) Guarantee will not apply if lamp brightness is below 50% due to wear or if the projector is not working due to other faults. (d) Over time worn lamps within all projector types will show a slight color variance. Copyright © 2011, Optoma Europe Ltd. All other product names and company names used herein are for identification purposes only and may be trademarks or registered trademarks of their respective owners. Crestron®, the Crestron and RoomView® logo are registered trademarks of Crestron Electronics, Inc. Errors and omissions excepted, all specifications are subject to change without notice. DLP®, BrilliantColor™ and the DLP logo are registered trademarks of Texas Instruments. All images of products are for representation purposes only. While every care is taken to provide accurate images of our products, actual products may differ slightly. Some product images may have been digitally altered by us to add an Optoma logo to the front panel. Optoma reserves the right to amend or alter actual product or product images without notice. Some images may be simulated.