



Touchboards

205 Westwood Ave, Long Branch, NJ 07740
Phone: 866-94 BOARDS (26273) / (732)-222-1511
Fax: (732)-222-7088 | E-mail: sales@touchboards.com

Optoma

Projector Expert

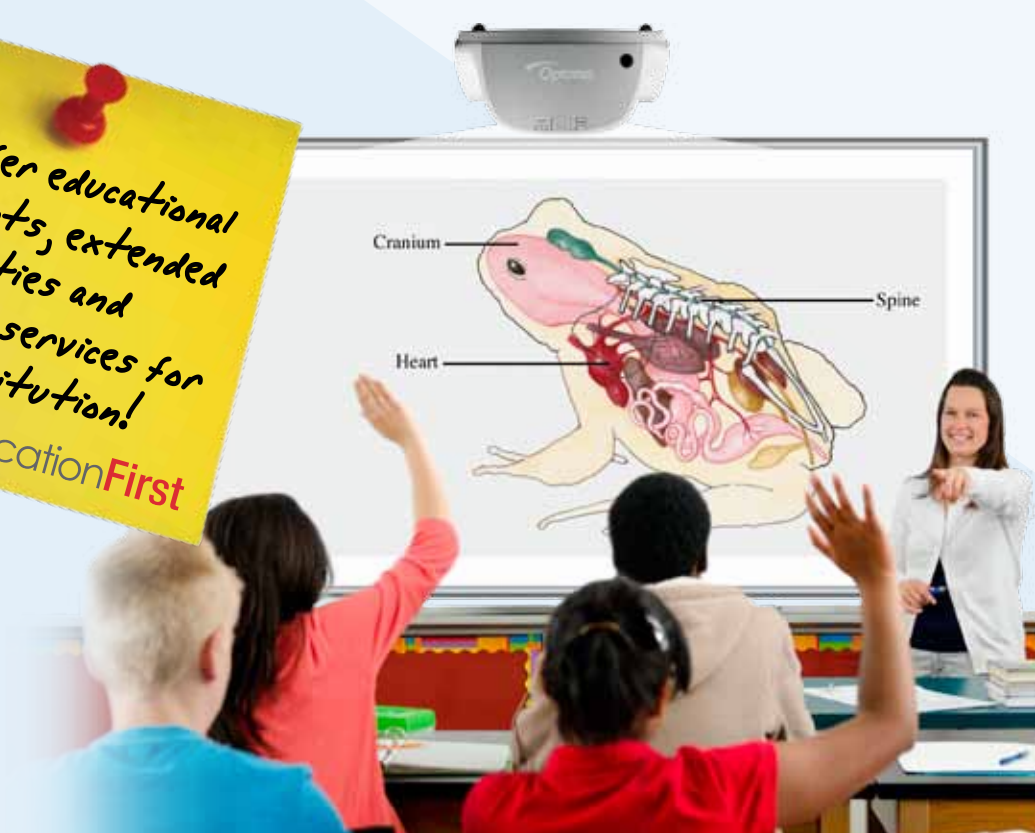
GIVING SCHOOLS AND EDUCATORS A POWERFUL LESSON PLAN

- » Experienced Leaders in Education
- » Education First Program
- » Quality and Reliability:
#1 Provider of DLP Projectors
- » Classroom Interaction
- » 3D Learning: Why It Is Important?
- » Network Management for
Greater Flexibility
- » Eco-Friendly Project Green

*We offer educational
discounts, extended
warranties and
support services for
your institution!*

EducationFirst

Optoma is your Projector Expert.



EXPERIENCED LEADER IN EDUCATION

For over a decade, Optoma has been providing hi-tech projector solutions to the nation's largest K-12 districts, colleges and universities. From district-wide projects to single classrooms, our focus is finding the right projector solution that meets your expectation and budget.

Optoma is here to help you work through the decision making and selection process. We want to make sure you get the right solutions for your learning environments.

“ [The teachers] were so excited to use it that they were already thinking about how to change their teaching style and lessons to use the projectors more.”

- Brian S. Novak, AV and video production coordinator at Springdale Junior-Senior High School

Small Room, Big Projection

Shadows and screen glare are a thing of the past with Optoma's short and ultra-short throw projectors. Now, educators can stand and teach close to the screen without affecting the image.

Save Space

Easy to install, Ultra Short Throw projectors can display a 60" image from as little as 15 inches from the screen.

Eradicate Shadows

The close proximity of projector to screen lets instructors teach without worrying about casting shadows on their materials.

Choosing the Right Projector

When choosing the right projector there are a few factors that need consideration, such as the room size, number of students and ambient light levels.

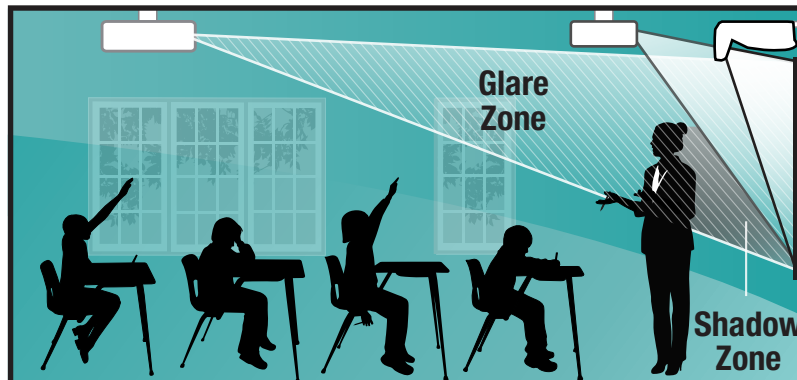
Use the following guides to help find the ideal projector for your classroom.

Number of Students	Projected Image Size	Recommended Projector Brightness	+ Additional Brightness Recommended	
			+ Lumens	(Level of ambient light)
#	(Diagonal in inches)	(ANSI lumens)	+ Lumens	(Level of ambient light)
< 30	63"-85"	2500-3000	+0	Dark room, no windows
30-60	77"-100"	3000-3500	+500	Very low amount of light from windows or indoor lights
30-80	80"-150"	3500-4000	+1000	Low amount of light from windows or indoor lights
50-100	120"-300"	4000+	+2000	Large amount of light from windows or indoor lights

Standard Throw
12-feet

Short Throw
4-feet

Ultra Short Throw
1.5-feet



Advantages of Projectors Positioned Close to Wall



Who Qualifies for Education First

The Optoma Education First program serves all K-12 and Higher Education institutions. By registering and working with an Optoma Education First authorized reseller, program members receive increased discounts, extended product warranties, enhanced technical support and access to the Education First rewards program. Education First points, which are awarded for every purchase, can be used to purchase free projectors, lamps, screens and other accessories.



TW675UTIM-3D

Optoma's Education First program **stretches your budget dollars and your institution's profits,** through the program's many **benefits!**

- + Discounts on projectors and accessories
- + Aggressive volume pricing
- + Free warranty that includes extended projector and lamp coverage, as well as Express Replacement Service
- + Dedicated sales support, live product demos and free evaluation units
- + Education First technical support, available toll-free, 24/7
- + Education First Reward points, which can be redeemed for free products

Education First customers receive Optoma's market-leading 4-3-2 Warranty. The warranty extends protection for education users. By providing an additional year on the projector and doubling the lamp protection, Optoma's education customers are assured of additional peace of mind and optimal ROI.



Exclusive Free Education First 4-3-2 Warranty
4-Year Parts and Labor on Projector
3-Year Optoma Express Warranty
2-Year Lamp Warranty

Enroll Today!

<http://edu.optoma.com>



Optoma, the leading provider of DLP® projectors in the Americas, delivers projectors that integrate Texas Instruments' DLP chips to ensure excellent price performance and superior product quality. The latest DLP projection technology helps you deliver clear, bright and colorful lessons that inspire students by making learning fun and engaging.

Touchboards

205 Westwood Ave, Long Branch, NJ 07740
Phone: 866-94 BOARDS (26273) / (732)-222-1511
Fax: (732)-222-7088 | E-mail: sales@touchboards.com

QUALITY AND RELIABILITY

Detailed Projection

Lessons in the classroom and presentations in a university lecture hall demand sharp, flawless images. DLP technology from Texas Instruments produces exceptional contrast ratios for pin sharp graphics and crystal clear text. The crisper whites and ultra-rich blacks mean images come alive and text is easier to read.

easier to read

Low contrast

DLP

Low Total Cost of Ownership

When it comes to IT hardware, the cost of the equipment can be the smallest part of the equation. Often, users worry most about the initial cost of the projector rather than total cost of ownership. However, on-going costs (including time and money spent changing bulbs or maintaining the projector) and the life expectancy of the equipment can be more significant. Optoma's DLP projectors save schools money by demanding less maintenance while delivering robust operation and longevity.

Amazing Colors

Grab your students' attention with bright, vivid projected images, thanks to the BrilliantColor™ technology incorporated within all Optoma projectors.



BrilliantColor™



Without



With

Digital Technology

DLP® (Digital Light Processing) technology from Texas Instruments is a precise, digital imaging chip, perfect to ensure crisp, sharp projection. The amazing DLP® chip consists of up to millions of tiny, microscopic mirrors which reflect light, digitally to create a stunning image.



PICTURE BY
DLP
TEXAS INSTRUMENTS

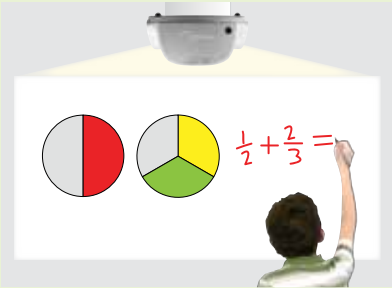
Optoma
#1 DLP
Projector Brand
AMERICAS

Flexible Alternative to Interactive Whiteboards

Teaching can be fun and exciting with Optoma's complete line of interactive projectors.

Turn any surface into a 3D interactive workspace, without the need of a screen or electronic whiteboard. Optoma's ultra-short throw projectors are 1/3 the cost of interactive whiteboards.

A PointBlank interactive pen replaces the traditional mouse and gives you control at the screen or from anywhere in the room.



- + PointBlank interactive pen and wall mount are included with several models
- + Can be a complement to plain whiteboards
- + Up to 100" diagonal image
- + Calibration free

Annotate, draw and highlight over your browser or applications with the included Wiz-Teach interactive software. Future proof your classroom for the 21st Century.



PointBlank Pen (BI-PEN20)
3D Glasses (BG-ZD101 Featured)

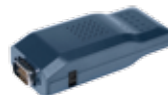
CLASSROOM INTERACTION



Teach and communicate from anywhere within the classroom. Optoma's optional VGA dongle enables wireless technology for sharing images, videos and presentations directly from laptops, iPads®, tablets or mobile devices. Wireless option available on many Optoma projectors.

Wireless Accessories

BI-EXTGB02



VGA dongle allows you to display presentations and video material wirelessly powered through VGA or power adaptor
Compatible with: Optoma SVGA/XGA/WXGA projectors

BI-EXTBGN



Mini wireless USB dongle allows you to display presentations and video material wirelessly

3D LEARNING

Improved

- ✓ Comprehension
- ✓ Information retention
- ✓ Engagement
- ✓ Visualization
- ✓ Academic results

3D Projection Brings Ideas to Life!

Explore the world, travel through space and see inside the body... Optoma 3D projectors create an immersive learning environment that captivates students. Research proves that students learn and retain more information when 3D technology is used.

Why is 3D Important?

"The research results indicated that the students had a strong preference for visual and kinesthetic learning, with 85% of the students preferring seeing and doing, while only 15% of students preferred hearing."

The Impact of 3D on Academic Results

"The results of the research indicate a marked positive effect of the use of 3D animations on learning, recall and performance in tests. Under experimental conditions, 86% of students improved from the pre-test to the post-test in the 3D classes, compared to only 52% who improved in the 2D classes."

Optoma's 3D Products

Many of Optoma's projectors integrate 3D capabilities to allow teachers to take advantage of available 3D learning content across the curriculum. By bringing 3D images and videos into science, math, literature and more, educators can create interactive lessons that excite their students.

Extracts taken from: The "3D in Education" White Paper
Written by Professor Dr. Anne Bamford, Director of the International Research Agency



The Abbey School considers DLP the technology of choice. Kathryn Macaulay, Deputy Headmistress at The Abbey School, said:

"We use DLP projectors made by Optoma, the main criteria being that every projector we purchase uses DLP technology. DLP projectors offer great picture quality in both 2D and 3D, good value for money and are very reliable. The priority for us is that we can run 3D content to help our students learn using the best possible resources."

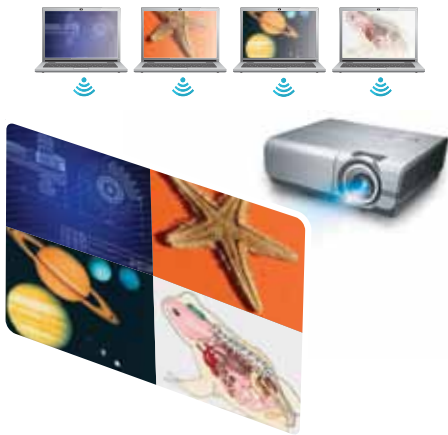
Abbey School: First classroom in the world to trial 3D projection, UK



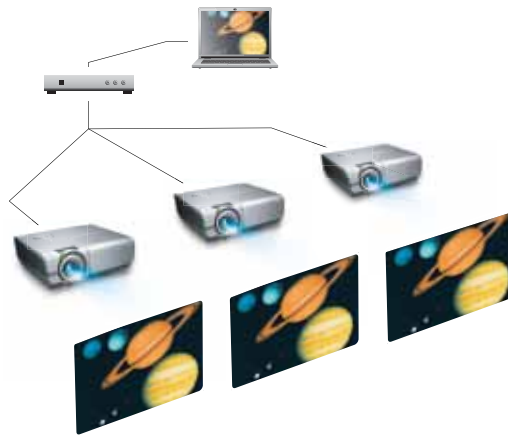
NETWORK MANAGEMENT FOR DISPLAY AND CONTROL

Optoma's advanced networking capabilities let educators manage teaching materials remotely, for maximum impact. Four-in-one split screen allows users to simultaneously display multiple images on a single screen. Meanwhile, for multiple rooms or large lecture halls, users have the ability to send a displayed screen to up to eight projectors over the network.

4-in-1 split-screen projection



1 to 8 over local area network



Network Management

Network LAN control using the free Crestron RoomView® express software makes it simple and easy to manage and view the status of up to 250 projectors in real time. Receive email alerts about lamp replacements and leverage text broadcast capabilities for urgent announcements.



24/7 real-time alert system providing feedback for lamp life, power status and unit presence



Email alerts for lamp replacements



Automated scheduling features, such as power on and off



Setting adjustments, such as inputs, brightness and volume



Emergency text broadcast capabilities for urgent or important announcements

ACCESSORIES TO COMPLETE YOUR CLASSROOM SOLUTION

Optoma supports its projectors with a broad range of accessories that will fit the specific needs of your classroom or auditorium. Below is a sample of several common solutions.

Document Camera

DC300i



- Document camera
- + Native SXGA 1280 x 1024
- + Built-in LED lamp
- + One-touch auto focus
- + Included remote control
- + VGA and USB output
- + Five-year warranty

Mounting Solutions

BM-5001U



Universal ceiling mount, flush with optional adjustable extension columns in black

BM-3002N



Single stud ultra short throw mount with telescoping arm
Compatible with: TW675UST-3D/TW675UTiM-3D/
TX665UST-3D/TX665UTiM-3D/TX565UT-3D

Screen Solutions

Wide range of manual and portable screens

Lamps

BL-FU280C



280W OSRAM lamp runs 3,000 hours in standard mode and 2,500 hours in bright mode
Compatible with: TW675UST-3D/TW675UTiM-3D/
TX665UST-3D/TX665UTiM-3D

3D Glasses

BG-ZD101



DLP Link 3D glasses are battery operated and offer up to 70 hours of usage with a 40-foot range
Compatible with: Optoma DLP Link projectors

PEACE OF MIND

Optoma – The Education Projector Expert

Manufacturing Power

As a subsidiary of Coretronic Corporation, the largest DLP manufacturer in the world, Optoma combines the agility of a smaller company with the manufacturing prowess of a world leader.

Comprehensive Choices

Optoma delivers the broadest range of projection options available. For the classroom, lab or auditorium, Optoma offers feature-rich and performance-oriented solutions.

Product Innovation

Optoma's award-winning projectors give customers the choice of best-in-class projection technologies and products designed to future-proof classrooms for the 21st century.

Local Service

Optoma is here to help with a US-based 24/7 call center and repair facilities. We answer your calls quickly and back our products with industry leading warranties.

Customer-Focused Sales

Optoma's education support team will help you choose the right product solution that meets your expectation and budget. Bid desk support, free evaluation units and exclusive education product discounts are standard.

Optoma is committed to helping you save energy and money. All of Optoma's education projectors are designed to be environmentally friendly, to reduce carbon footprint and to conserve power.



Design and Packaging

We have designed our products to have a long usable life, use fewer materials, ship with efficient packaging and be free of many toxic substances. With each new product, we strive towards minimizing our environmental impact.

Energy Efficiency

Optoma is at the forefront of introducing the most energy efficient products in the industry.

- ECO mode reduces power consumption up to 75 percent. Optoma was the first company to introduce projectors that consume less than 1 Watt in standby mode.
- Features such as ECO mode, automatic shutdown and remote management and control limit energy use.
- Automatic shut-off saves electricity, extends lamp life and reduces replacement costs.
- New and emerging technologies (such as LED and LED/laser) provide lamp-free alternatives that save cost and reduce waste.

Recycling

Through its trade-in program and other activities, Optoma works to reduce the amount of electronic equipment being produced and to encourage reuse, recycling and recovery.



Visit <http://edu.optoma.com>

for more information on

Education First Program Benefits

