



DLP® Projector

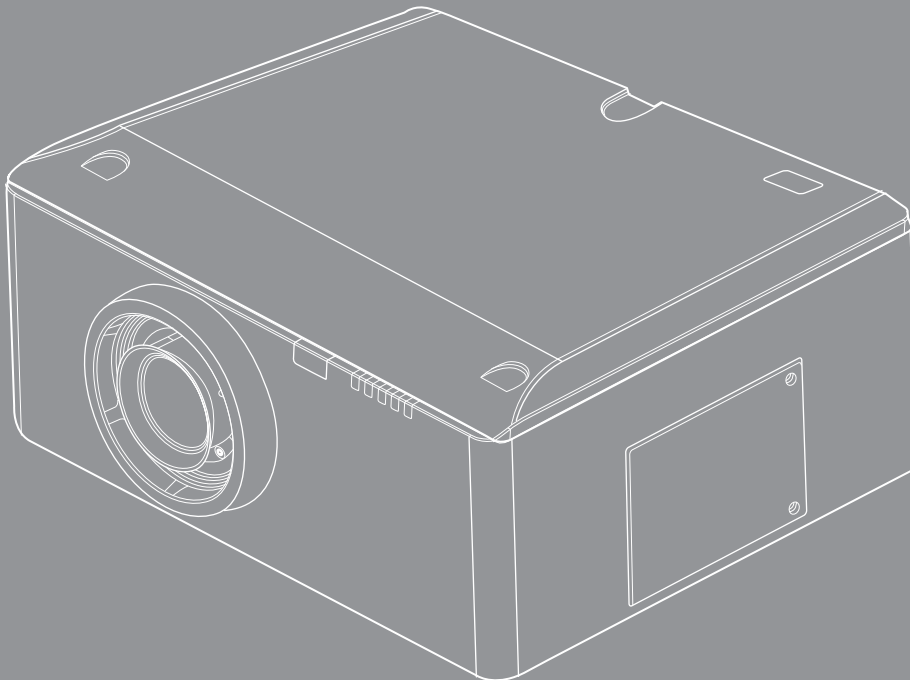


TABLE OF CONTENTS

SAFETY	4
<i>Product Features</i>	6
<i>Package Overview</i>	6
INTRODUCTION	6
<i>Product Overview</i>	7
<i>Main Unit</i>	7
<i>Control Panel</i>	8
<i>Connection Ports</i>	9
<i>Remote Control</i>	10
<i>Installing the Projector Lens</i>	11
INSTALLATION.....	11
<i>Connecting to Computer/Notebook</i>	12
<i>Connecting to Video Sources</i>	13
<i>Powering On/Off the Projector</i>	14
<i>Powering On the Projector</i>	14
<i>Powering Off the Projector</i>	15
<i>Warning Indicator</i>	16
<i>LED Lighting Message</i>	16
<i>Adjusting the Projected Image</i>	17
<i>Adjusting the Projector's Height</i>	17
<i>Adjusting the Projecting Image's Position</i>	17
<i>Using the Control Panel</i>	18
USER CONTROLS	18
<i>On-screen Display Menus</i>	19
<i>How to operate</i>	19
<i>Structure</i>	20
<i>IMAGE</i>	23
<i>PICTURE Advanced</i>	25
<i>SCREEN</i>	27
<i>SETTING</i>	29
<i>SETTING Lens Function</i>	30
<i>SETTING Security</i>	31
<i>SETTING Signal (RGB)</i>	32
<i>SETTING Signal (Video)</i>	33
<i>SETTING Advanced</i>	34
<i>SETTING Network</i>	35
<i>SETTING 3D</i>	39

<i>OPTIONS</i>	40
<i>OPTIONS Lamp Settings</i>	41
<i>OPTIONS Remote Settings</i>	42
<i>OPTIONS Advanced</i>	43
<i>Troubleshooting</i>	45
<i>Image Problems</i>	45
APPENDICES	45
<i>Projector Problems</i>	47
<i>On Screen Messages</i>	49
<i>Replacing the Lamp</i>	49
<i>Filter maintenance</i>	51
<i>Compatibility Modes</i>	52
<i>Remote Key Code</i>	56
<i>Cabinet dimension</i>	57

SAFETY

FCC Statement

This equipment has been tested and found to comply with the limits for a Class A digital device, pursuant to part 15 of the FCC Rules. These limits are designed to provide reasonable protection against harmful interference when the equipment is operated in a commercial environment. This equipment generates, uses, and can radiate radio frequency energy and, if not installed and used in accordance with the instruction manual, may cause harmful interference to radio communications.

Operation of this equipment in a residential area is likely to cause harmful interference in which case the user will be required to correct the interference at his own expense.

Warning: You are cautioned that changes or modifications not expressly approved by the party responsible for compliance could void your authority to operate the equipment.

For Canada

CAN ICES-3(A)/NMB-3(A)

CE Conformity for European Countries

 The device complies with the EMC Directive 2004/108/EC and Low Voltage Directive 2006/95/EC.

Warning -

- This product must not be used in residential areas.
- This product may cause interference if used in residential areas.

Such use must be avoided unless the user takes special measures to reduce electromagnetic emissions to prevent interference to the reception of radio and television broadcasts.

Following information is only for EU-member states:

The mark is in compliance with the Waste Electrical and Electronic Equipment Directive 2002/96/EC (WEEE).

The mark indicates the requirement NOT to dispose the equipment including any spent or discarded batteries or accumulators as unsorted municipal waste, but use the return and collection systems available.

If the batteries, accumulators and button cells included with this equipment, display the chemical symbol Hg, Cd, or Pb, then it means that the battery has a heavy metal content of more than 0.0005% Mercury or more than, 0.002% Cadmium, or more than 0.004% Lead.



Precautions



Please follow all warnings, precautions and maintenance as recommended in this user's guide.

- Warning- As with any bright light source, do not stare into the beam, RG2 IEC 62471-5:2015
- Warning- To reduce the risk of fire or electric shock, do not expose this projector to rain or moisture.
- Warning- Please do not open or disassemble the projector as this may cause electric shock.
- Warning- When replacing the lamp, please allow the unit to cool down. Follow instructions as described on pages 65-66.
- Warning- This projector will detect the life of the lamp itself. Please be sure to change the lamp when it shows warning messages.
- Warning- Reset the "Lamp Reset" function from the on-screen display "OPTIONS | Lamp Settings" menu after replacing the lamp module (refer to page 56).
- Warning- When switching the projector off, please ensure the cooling cycle has been completed before disconnecting power. Allow 60 seconds for the projector to cool down.
- Warning- Do not use lens cap when projector is in operation.
- Warning- When the lamp is approaching the end of its lifetime, the message "Lamp Warning: Lamp life exceeded." will show on the screen. Please contact your local reseller or service center to change the lamp as soon as possible.
- Warning- Do not look into or point the laser pointer on your remote control into your or someone's eyes. Laser pointer can cause permanent damage to eyesight.
- Warning- Do not transport the projector with any lens installed.

Do:

- Turn off and unplug the power plug from the AC outlet before cleaning the product.
- Use a soft dry cloth with mild detergent to clean the display housing.
- Disconnect the power plug from AC outlet if the product is not being used for a long period of time.

Do not:

- Block the slots and openings on the unit provided for ventilation.
- Use abrasive cleaners, waxes or solvents to clean the unit.
- Use under the following conditions:
 - In extremely hot, cold or humid environments.
 - ▶ Ensure that the ambient room temperature is within 5°C ~ 40°C
 - ▶ Relative humidity is 10% ~ 85%
 - In areas susceptible to excessive dust and dirt.
 - Near any appliance generating a strong magnetic field.
 - In direct sunlight.

INTRODUCTION

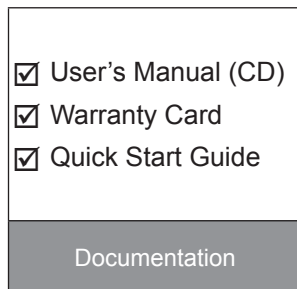
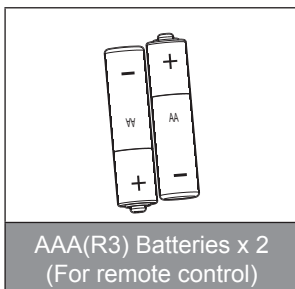
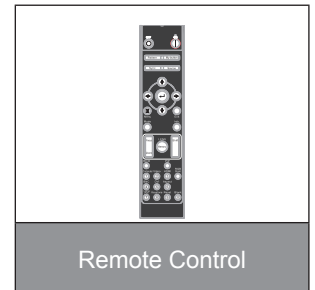
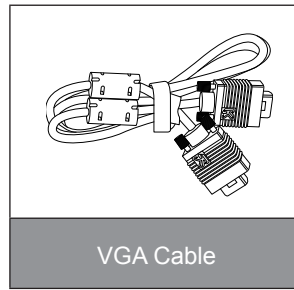
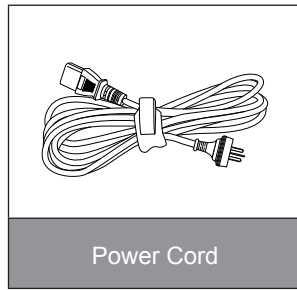
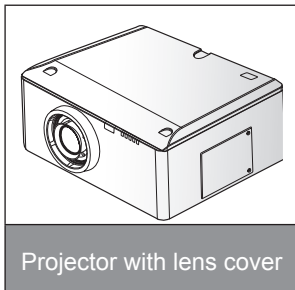
Product Features

- ▶ Resolution: WUXGA
- ▶ Single lamp system
- ▶ Power Zoom/Focus
- ▶ Power lens shift
- ▶ Dynamic Aperture
- ▶ Filter module
- ▶ Support PIP/POP function
- ▶ Support network management for remote control and monitoring
- ▶ 3D: Frame Sequential @120Hz

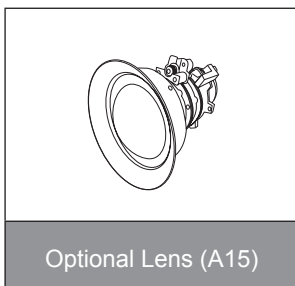
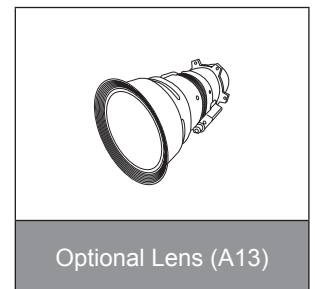
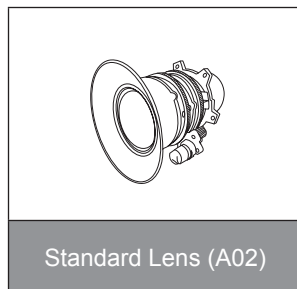
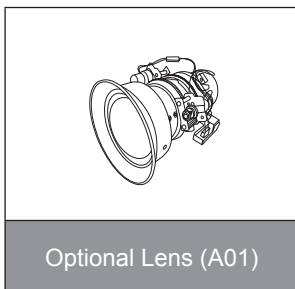
Package Overview

Unpack and inspect the box contents to ensure all parts listed below are in the box. If something is missing, please contact our customer service.

Standard accessories



Optional accessories

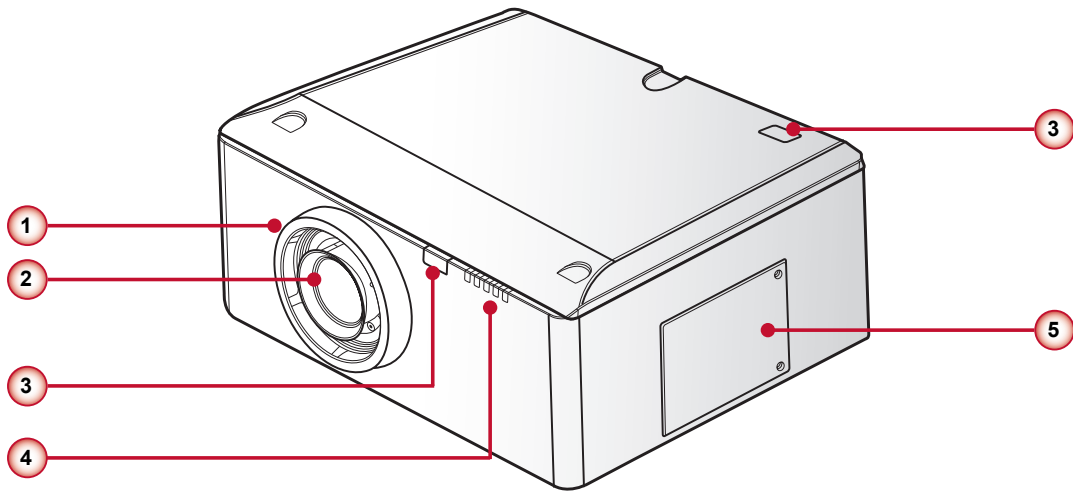


Note: Due to different applications in each Country, some regions may have different accessories.

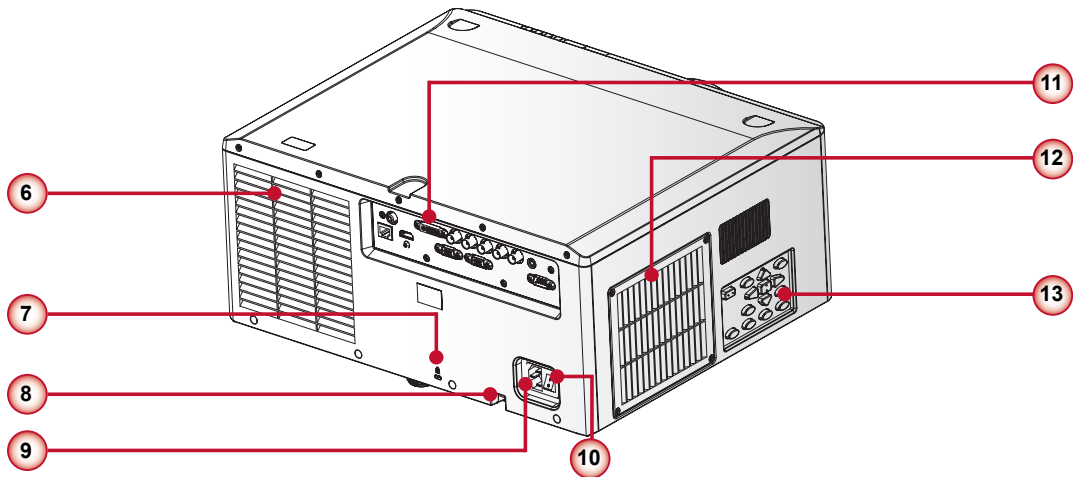
INTRODUCTION

Product Overview

Main Unit



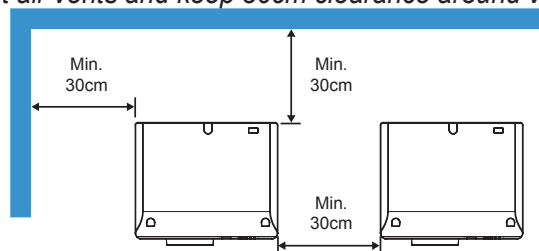
(Front View)



(Rear View)

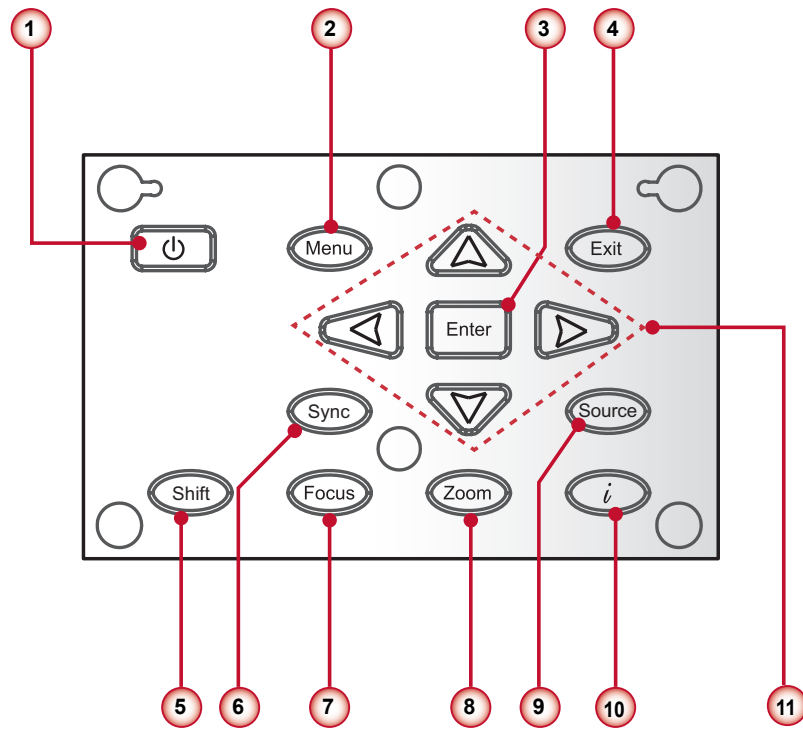
No	Item	No	Item
1.	Lens Ring	8.	Security Bar
2.	Zoom Lens	9.	Power Connector
3.	IR Receivers	10.	Power Switch
4.	LED Indicators	11.	Connector Panel
5.	Lamp Door	12.	Inlet Vent & Filter
6.	Outlet Vent	13.	Keypad Panel
7.	Kensington Lock		

Note: Do not block projector in/out air vents and keep 30cm clearance around vents for air flow concern.



INTRODUCTION

Control Panel

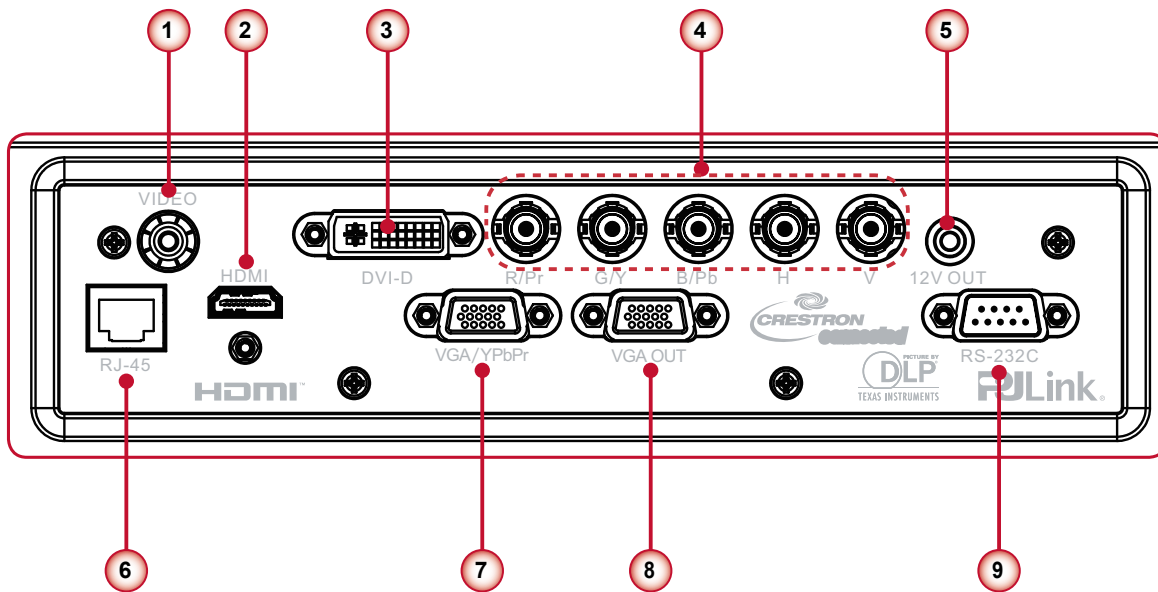


No	Item
1.	⏻ / Power key
2.	Menu key
3.	Enter key
4.	Exit key
5.	Lens shift key
6.	Sync Key

No	Item
7.	Focus key
8.	Zoom key
9.	Source Key
10.	Info key
11.	Four directional select keys

INTRODUCTION

Connection Ports



No	Item
1.	Composite Video Input Connector
2.	HDMI Connector
3.	DVI-D Connector
4.	BNC Connector
5.	12v Trigger Out Connector

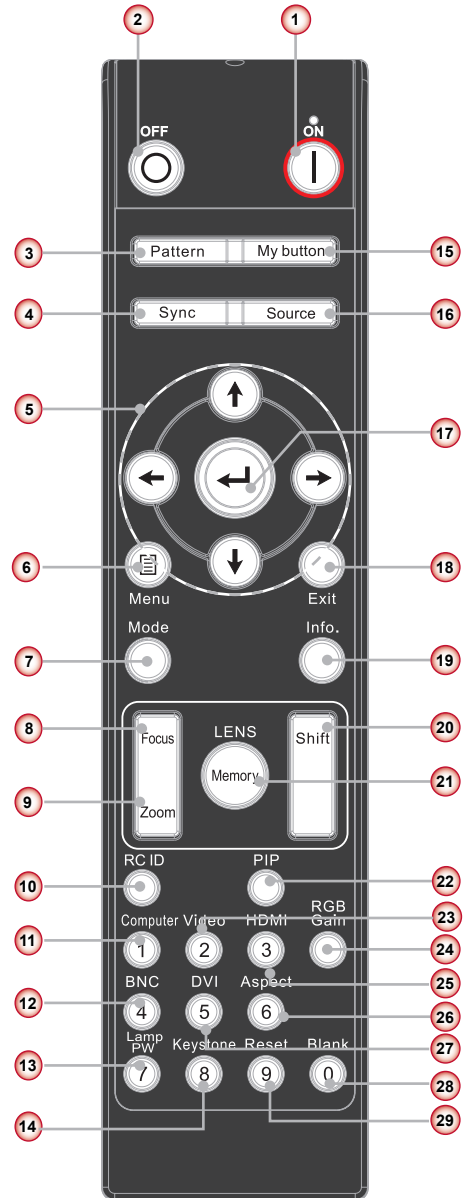
No	Item
6.	LAN Connector
7.	Computer In Connector
8.	Monitor out Connector
9.	Serial Connector (9-pin Dsub Type)

Note: Use cross cable for serial control with a PC.

INTRODUCTION

Remote Control

No	Item
1.	Power ON Power on the projector.
2.	Power OFF Power off the projector
3.	Pattern Display a test pattern.
4.	Sync Auto adjust projector with source
5.	Four Directional Select Keys Press up, down, left, right direction buttons to select items or make adjustments.
6.	Menu Launch the OSD main menu.
7.	Mode Select the display mode (Presentation, Bright, Movie, and User).
8.	Focus Adjust the lens focus.
9.	Zoom Adjust the lens zoom function.
10.	RC ID Set the remote control ID.
11.	Computer Switch to Computer source.
12.	BNC Switch to Component video source.
13.	Lamp PW Adjust lamp power.
14.	Keystone Adjust image distortion caused by tilting the projector.
15.	MyButton Launch a user-defined setting.
16.	Source Automatically scans for connected source.
17.	Enter Confirm your item selection.
18.	Exit Exit a menu.
19.	Information (i) Display the projector information.
20.	Shift Adjust the lens shift up/down/left/right.
21.	Memory Save the current lens shift settings to the memory.
22.	PIP Launch the Picture-in-Picture function.



No	Item
23.	Video Switch to Composite Video source.
24.	RGB Gain Enter the color management setting page.
25.	HDMI Switch to HDMI source.
26.	Aspect Adjust the aspect ratio of the projected screen.
27.	DVI Switch to DVI source.
28.	Blank Switch to a blank screen.
29.	Reset Reset the projector to factory default settings.

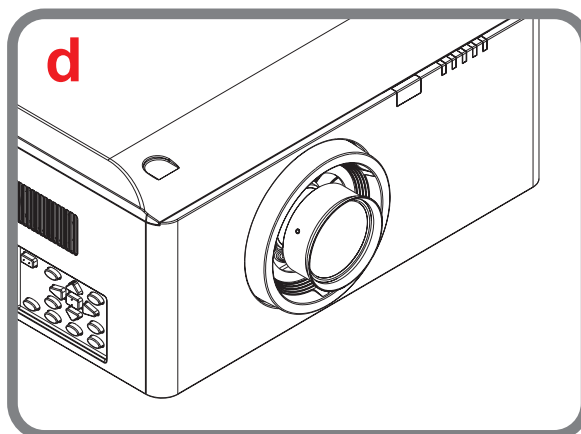
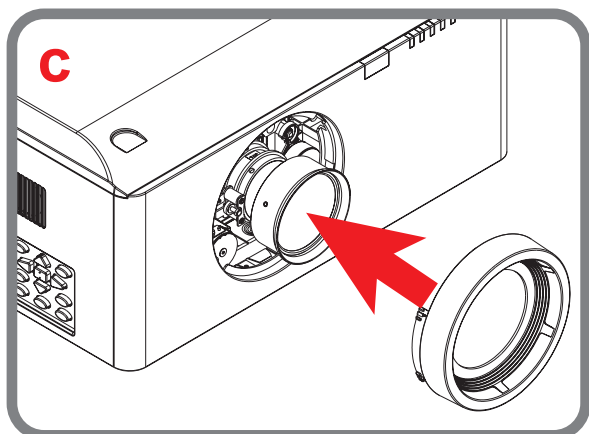
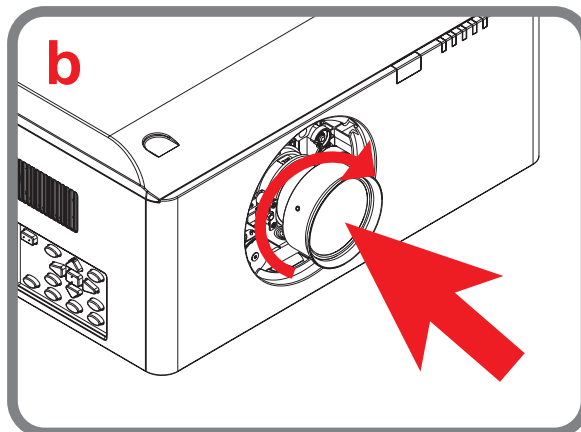
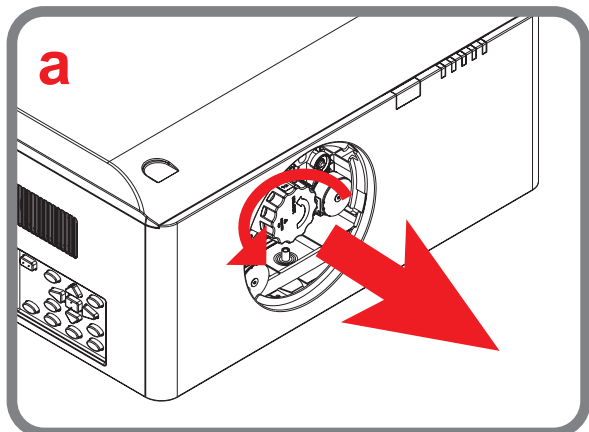
Note: When using the number keypad for password input, do not use "0" as part of the password.

INSTALLATION

Installing the Projector Lens

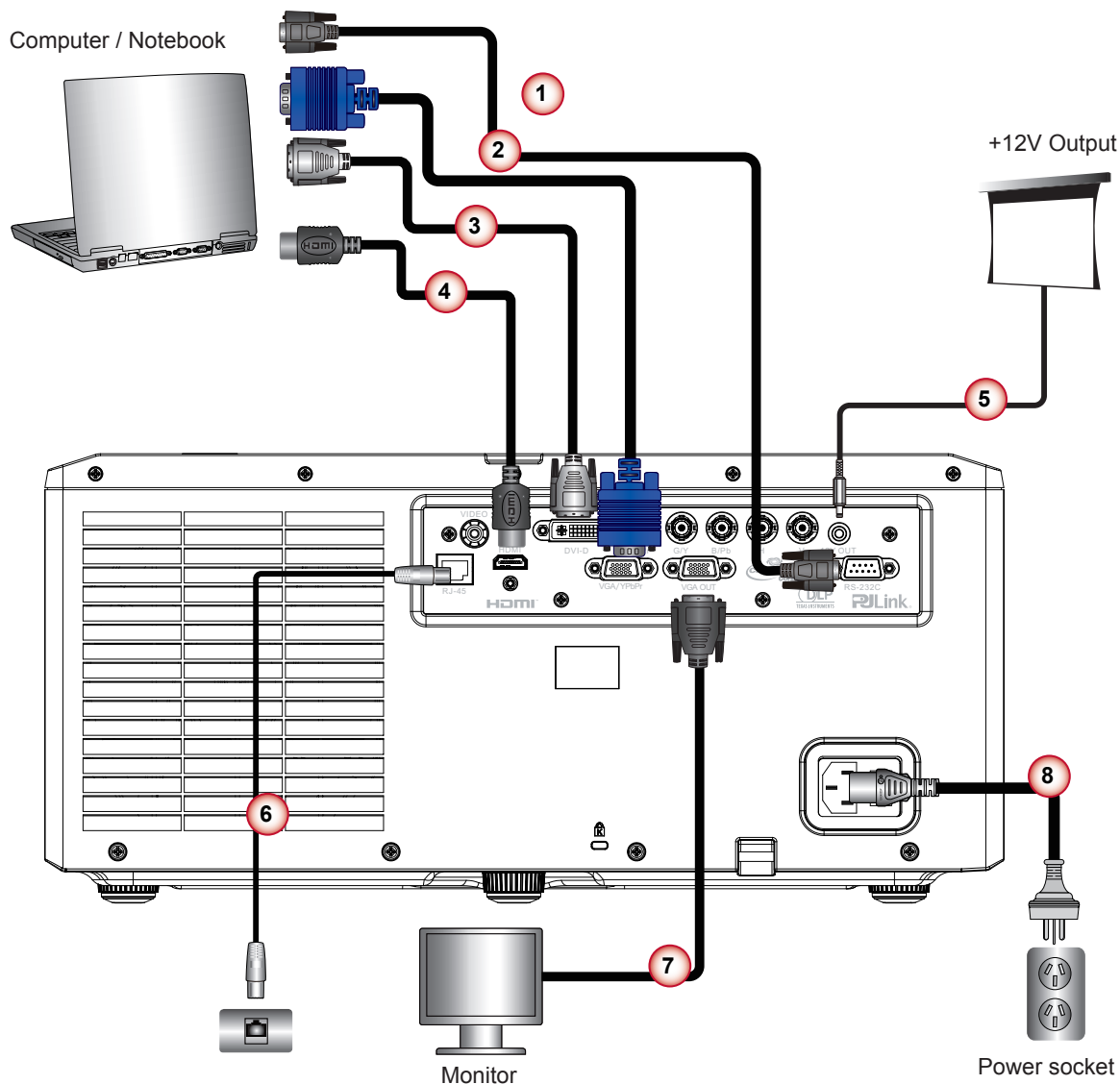
Please contact to the dealer for installation of the projection lens.

Warning: Do not transport the projector with any lens installed.



INSTALLATION

Connecting to Computer/Notebook



No	Item
1.	Serial Cable
2.	VGA Cable
3.	DVI-D Cable
4.	HDMI Cable

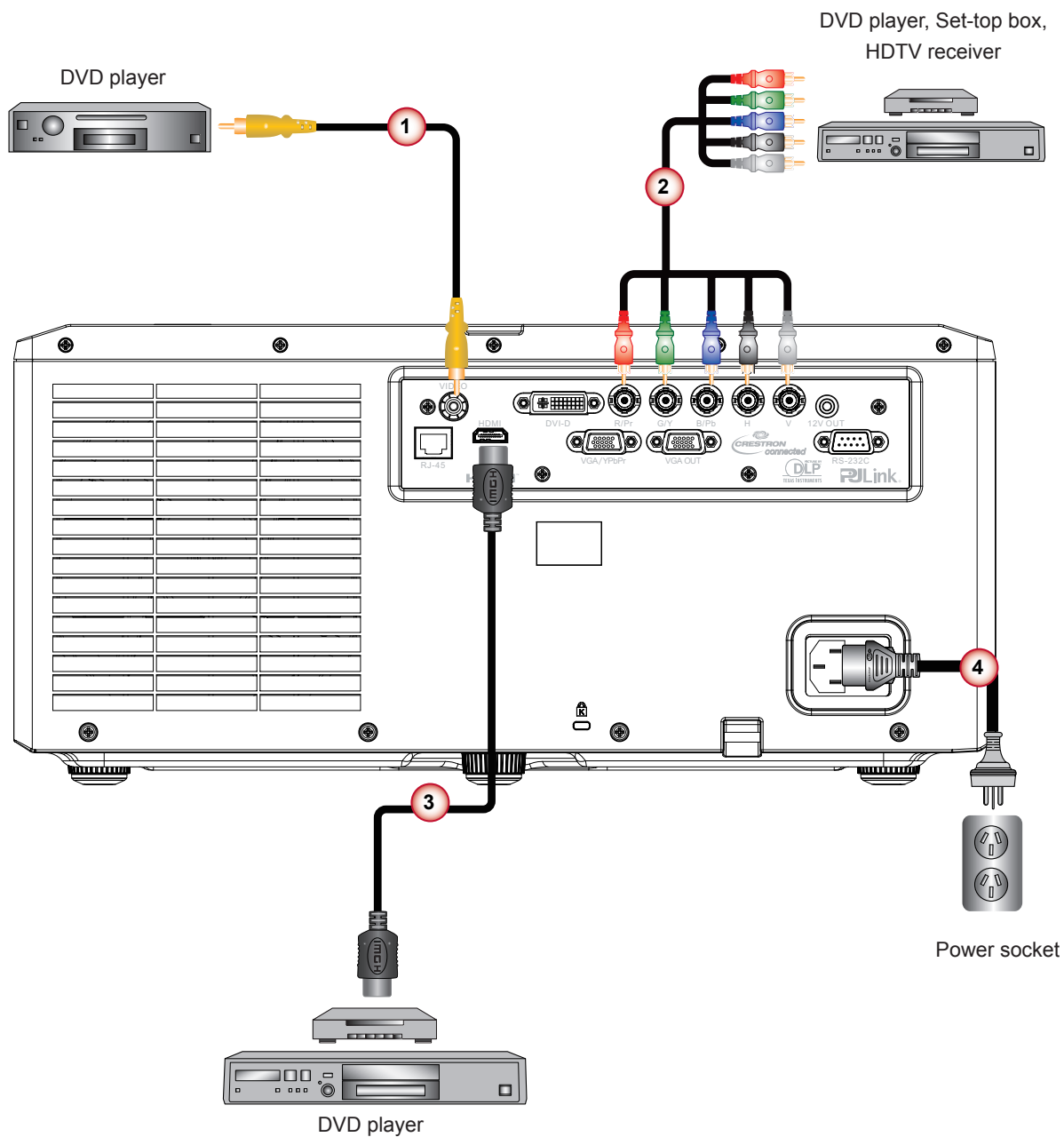
No	Item
5.	12V DC Jack
6.	LAN (RJ45) Cable
7.	VGA Cable
8.	Power Cord

Note:

Maximum output current of the trigger out is 200mA. This can't drive a motor directly.
Due to the difference in applications for each country, some regions may have different accessories.

INSTALLATION

Connecting to Video Sources



No	Item
1.	Composite Video cable
2.	BNC Cable
3.	HDMI Cable
4.	Power Cord

Note: Due to the difference in applications for each country, some regions may have different accessories.

INSTALLATION

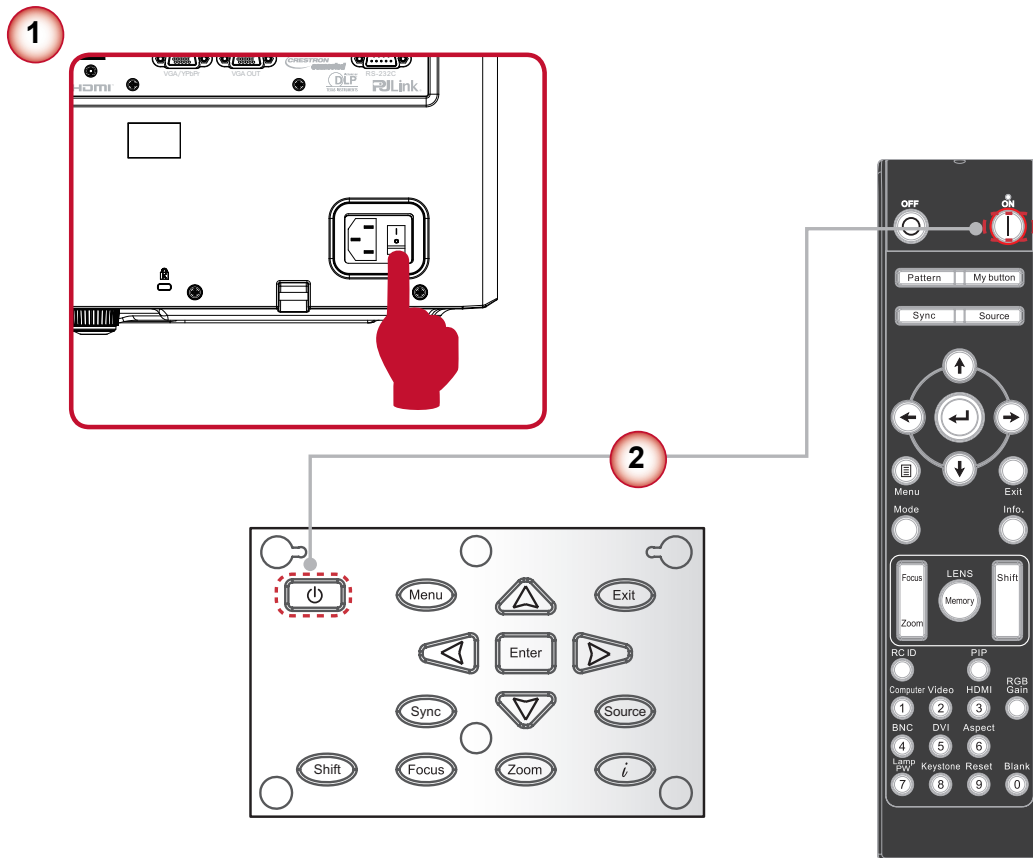
Powering On/Off the Projector

Powering On the Projector

1. Securely connect the power cord and signal cable. Power on the switch ① and the Power LED flashes Blue.
2. Turn on the lamp by pressing the “⏻” button on the control panel of the projector or “Power On” button on the remote control ②. The Power LED will turn blue.

The startup screen will display in approximately 10 seconds. The first time you use the projector, you will be asked to select the preferred language and power saving mode.

3. Turn on and connect the source that you want to display on the screen (computer, notebook, video player, etc). The projector will detect the source automatically. If not, push the menu button and go to “OPTIONS”. Make sure that “Auto Source” has been set to “Off”.
 - ▶ If you connect multiple sources at the same time, press the direct source buttons on the control panel or on the remote control to switch between inputs.

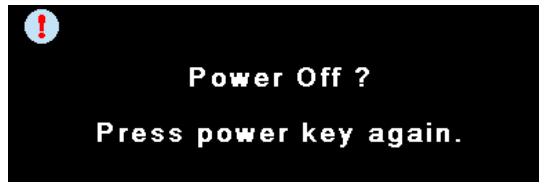


Note: Turn on the projector first and then select the signal sources.

INSTALLATION

Powering Off the Projector

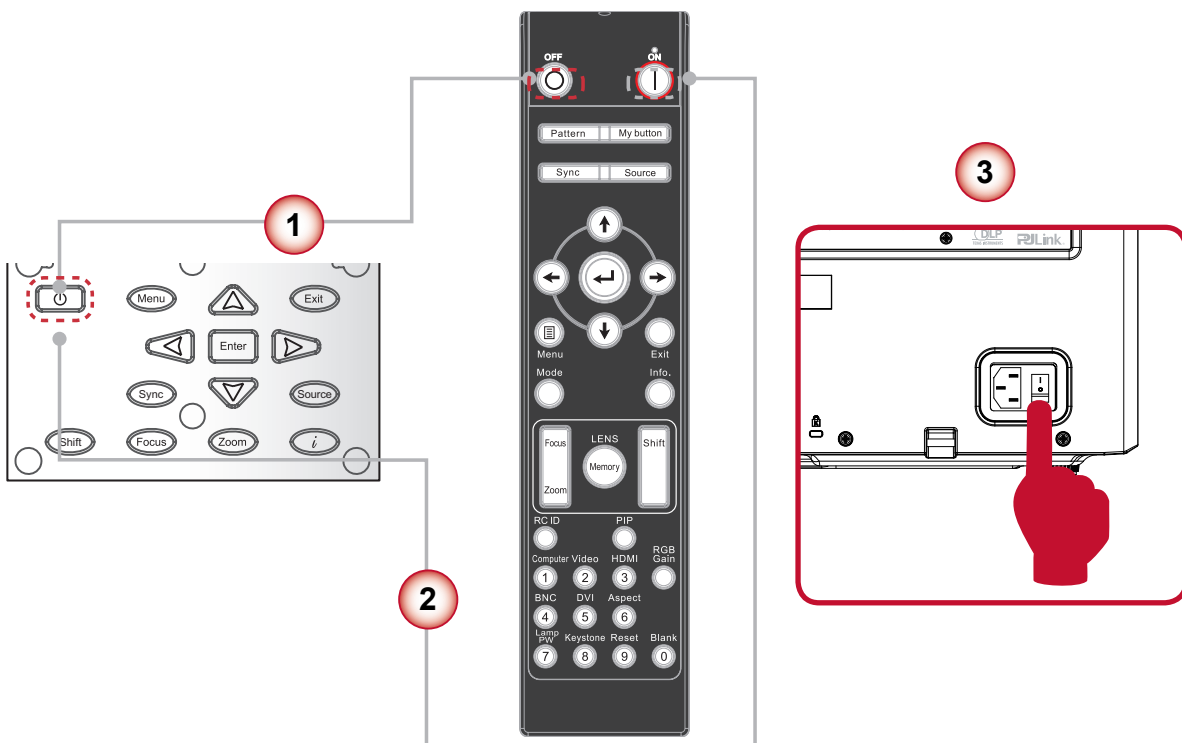
1. Press the “Standby” button on the remote control or the “⏻” button on the control panel to turn off the projector
①. The following message will be displayed on the screen.



Press the “Standby” button on the remote control or the “⏻” button on the control panel again ① to confirm otherwise the message will disappear after 40 seconds. When you press for the second time, the projector will shut down.

2. The cooling fans will complete the cooling cycle for about 180 seconds and the POWER LED will flash Blue. The projector has entered standby mode. If you wish to turn the projector back on, you must wait until the projector has completed the cooling cycle and has entered standby mode. Once in standby mode, simply press the “⏻” button on the control panel of the projector or “Power On” button on the remote control to restart the projector. ②
3. Power off the switch ③.
4. Disconnect the power cord from the electrical outlet and from the projector.

Note: Do not turn on the projector immediately following the power off procedure.



INSTALLATION

Warning Indicator

When the warning indicators (see below) come on, the projector will automatically shutdown:

- “LAMP” LED indicator is lit red and the “ERROR” LED indicator flashes red. This indicates that the lamp has failed.
- “TEMP” LED indicator is lit red and the “ERROR” LED indicator flashes red. This indicates the projector has overheated. Under normal conditions, the projector can be switched back on.
- “TEMP” LED indicator flashes red and the “ERROR” LED indicator flashes red. This indicates that the fan has failed.
- “ERROR” LED indicator flashes red and the “FILTER” LED indicator flashes red. This indicates that the filter needs replacement.
- “FILTER” LED indicator flashes red. This indicates that the filter needs to be cleaned.

Unplug the power cord from the projector, wait for 30 seconds and try again. If the warning indicator light up again, please contact your nearest service center for assistance.

LED Lighting Message

Message	Power LED		Lamp LED	Temp LED	Error LED	Filter LED
	Red	Blue	Red	Red	Red	Red
Standby State (LAN off)		Flashing				
Standby State (LAN On)		Flashing				
Power on & Lamp lighting		Steady light				
Power off (Cooling)		Flashing				
Error (Lamp fail)			Steady light		Flashing	
Error (Over Temp)				Steady light	Flashing	
Error (Fan fail)				Flashing	Flashing	
Error (Filter Switch)					Flashing	Flashing
Error (Filter Overheating)				Steady Light	Flashing	Flashing
Cooling for abnormal shutdown		Flashing		Flashing		

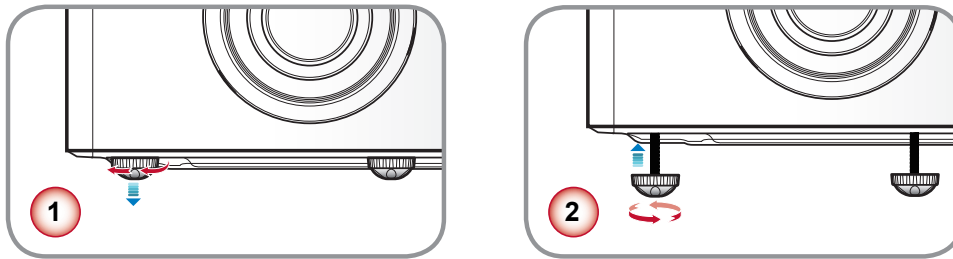
INSTALLATION

Adjusting the Projected Image

Adjusting the Projector's Height

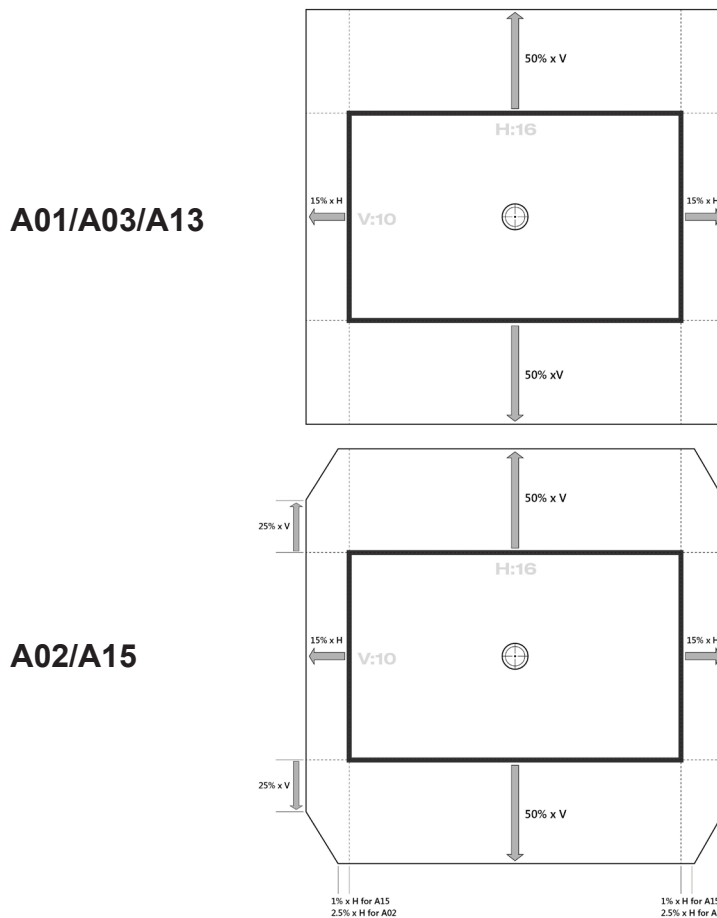
The projector is equipped with elevator rubber feet for adjusting the image height.

1. Locate the adjustable foot you wish to modify on the underside of the projector.
2. Rotate the adjustable ring clockwise to raise the projector or counter clockwise to lower it. Repeat with the remaining feet as needed.



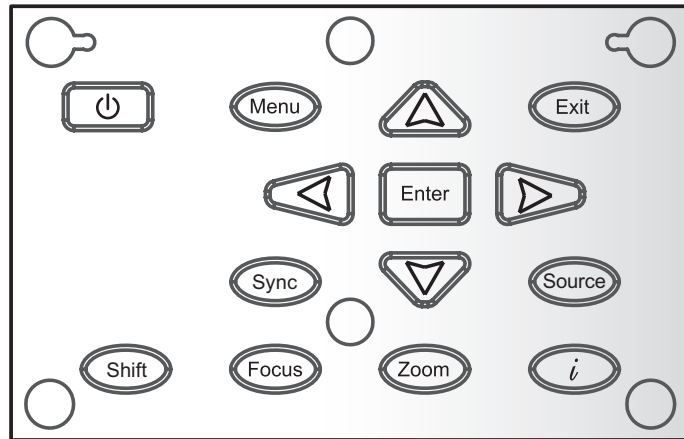
Adjusting the Projecting Image's Position








To determine where to position the projector, consider the size and shape of your screen, the location of your power outlets, and the distance between the projector and the rest of your equipment.



USER CONTROLS

Using the Control Panel



Name	Description
Power 	Turn the projector on/off.
Menu	Launch the on-screen display (OSD).
Exit	Exit a menu.
Enter	Confirm a selected item.
Four Directional Select Keys	1. Use     to select items or make adjustments to your selection. 2.  /  act as short hot keys for Keystone +/- adjustment.
Sync	Synchronize the projector with the input source.
Source	Select an input signal.
Shift	Adjust the lens shift up/down/left/right.
Focus	Adjust the lens focus function.
Zoom	Adjust the lens zoom function.
Info.	Display the projector's information.

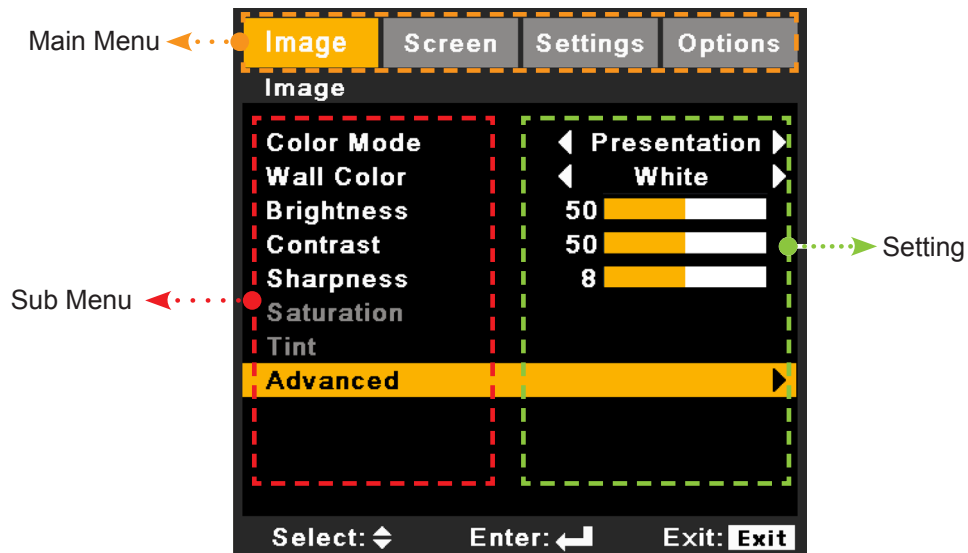
USER CONTROLS

On-screen Display Menus

The Projector has multilingual On-screen Display menus that allow you to make image adjustments and change a variety of settings. The projector will automatically detect the source.

How to operate

1. To open the OSD menu, press “Menu” on the Remote Control or Control Panel.
2. When OSD is displayed, use ▲▼ keys to select any item in the main menu. While making a selection on a particular page, press “Enter” key to enter sub menu.
3. Use ▲▼ keys to select the desired item in the sub menu and then press “Enter” key to view further settings. Adjust the settings by ◀▶ key.
4. Select the next item to be adjusted in the sub menu and adjust as described above.
5. Press “Enter” to confirm, and the screen will return to the main menu.
6. To exit, press “Menu” again. The OSD menu will close and the projector will automatically save the new settings.



USER CONTROLS

Structure

Note: Please note that the on-screen display (OSD) menus vary according to the signal type selected and the projector model you are using.

Main Menu	Sub Menu	Settings		
IMAGE	Color Mode		Presentation / Bright / Movie / User	
	Wall Color		White / Light Yellow / Light Blue / Pink / Dark Green	
	Brightness			
	Contrast			
	Sharpness			
	Saturation			
	Tint			
	Advanced	Noise Reduction		
		BrilliantColor™		On / Off
		Gamma		Film / Video / Graphics / Standard
		DynamicBlack		On / Off
		Color Temp.		Warm / Medium / Cool
		Color Space		Auto / RGB / YUV
Color Settings			Red Gain / Green Gain / Blue Gain / Red Bias / Green Bias / Blue Bias / Reset / Exit	
Input Source			HDMI / DVI / Computer / BNC / Video / Exit	
	Exit			
SCREEN	Aspect		4:3 / 16:9 / Native / Auto	
	Zoom			
	Overscan			
	H Image Shift			
	V Image Shift			
	V Keystone			
SCREEN	PIP / PBP	Screen		
		PIP Location		
		PIP Size	1/16 / 1/25 / 1/36	
		PIP/PBP Source	HDMI / Computer or DVI / Video / BNC	
		Swap		
		Exit		

USER CONTROLS

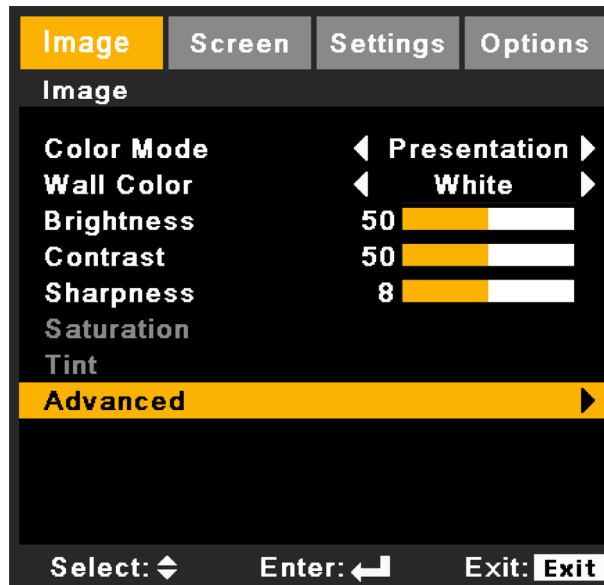
Main Menu	Sub Menu	Settings		
SETTING	Language		English / German / French / Spanish / Italian / Russian / Portuguese / Swedish / Simplified Chinese / Korean / Traditional Chinese / Turkish / Polish / Japanese / Norwegian / Exit	
	Projection		Front-Desktop / Rear-Desktop / Front-Ceiling / Rear-Ceiling	
	Menu Location		Top Left / Top Right / Center / Bottom Left / Bottom Right	
	Lens Function	Focus		Lock / Unlock
		Zoom		Lock / Unlock
		Lens Shift		Lock / Unlock
		Lens Position		Set 1 / Set 2 / Set 3
		Lens Calibration		Yes / No
		Exit		
	Security	Security Timer		Month / Day / Hour / Exit
		Change Password		
		Security		On / Off
		Exit		
	Signal (RGB)	Frequency		
		Phase		
		H. Position		
		V. Position		
		Automatic		Enable / Disable
		Exit		
	Signal (Video)	White Level		
		Black Level		
		Saturation		
		IRE		
		Exit		

USER CONTROLS

Main Menu	Sub Menu	Settings		
SETTING	Advanced	Logo	Default/Neutral	
		Closed Captioning	CC1 / CC2 / CC3 / CC4 / Off	
		Exit		
	Network	Network State		
		DHCP		
		IP Address		
		Subnet Mask		
		Gateway		
		DNS		
		Apply		
		Control System IP Address		
		Control System IP ID		
		Control System Port		
	Exit			
	3D	Mode	On / Off	
Invert		On / Off		
Exit				
OPTIONS	Auto Source		On / Off	
	High Altitude		On / Off	
	Status Hide		On / Off	
	Keypad Lock		Lock / Unlock	
	Test Pattern		None / Grid / White	
	Background Color		Blue / Black / Red / Green / White	
	Lamp Settings	Lamp Hour		
		Lamp Reminder	On / Off	
		Lamp Mode	Normal / ECO / Advanced	
		Lamp Reset	Yes / No	
		Exit		
	Remote Settings	My Button	BrilliantColor / Gamma / DynamicBlack / Color Temp. / Projection / HDMI Cable	
		Top IR Function	On / Off	
		Front IR Function	On / Off	
		Remote Code		
		Exit		
	12V Trigger		On / Off	
	Advanced	Direct Power On	On / Off	
		Auto Power Off		
		Sleep Timer		
		Standby Mode	LAN On / LAN Off	
		Baudrate	9600/19200/38400	
		Exit		
HDMI Cable		Normal / Long / Short		
Information				
Reset		Yes / No		

USER CONTROLS

IMAGE



Color Mode

There are many factory presets optimized for various types of images.

- Presentation: Good color and brightness for PC input.
- Bright: Maximum brightness for PC input.
- Movie: For home theater.
- User: User's settings.

Wall Color

Select a similar preset color of the colored wall, in order to correct the color of the projected image as if it is projected on a white screen.

Available options: White / Light Yellow / Light Blue / Pink / Dark Green.

Brightness

Adjust the brightness of the image.

- Press the ◀ button to darken image.
- Press the ▶ button to lighten the image.

USER CONTROLS

Contrast

The contrast controls the degree of difference between the lightest and the darkest parts of the picture. Adjusting the contrast changes the amount of black and white in the image.

- Press the ◀ button to decrease the contrast.
- Press the ▶ button to increase the contrast.

Sharpness

Adjust the sharpness of the image.

- Press the ◀ button to decrease the sharpness.
- Press the ▶ button to increase the sharpness.

Saturation

Adjust a video image from black and white to fully saturated color.

- Press the ◀ button to decrease the color saturation in the image.
- Press the ▶ to increase the color saturation in the image.

Tint

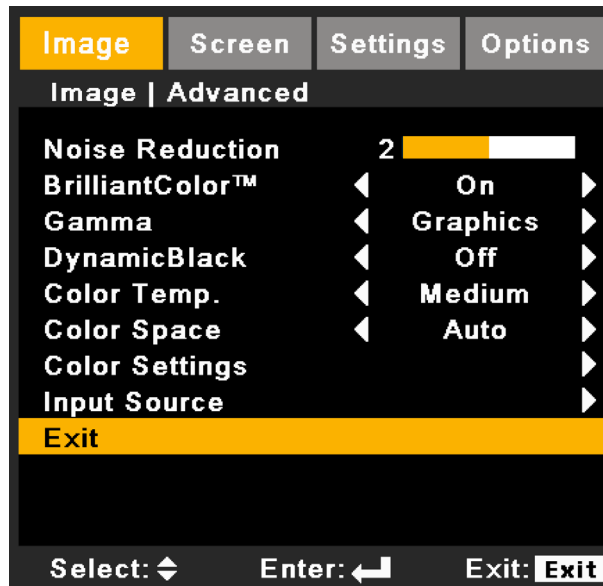
Adjust the color balance of red and green.

- Press the ◀ button to increase the amount of green in the image.
- Press the ▶ button to increase the amount of red in the image.

Note: "Color" and "Tint" are only supported for video and component sources.

USER CONTROLS

PICTURE | Advanced



Noise Reduction

The motion Adaptive Noise Reduction reduces the amount of visible noise interlaced signals. The range is from “0” to “10”. (0: Off)

BrilliantColor™

Enable the BrilliantColor™ function to enhance the brightness while providing true, more vibrant colors in picture.

Gamma

This allows you to choose a gamma table that has been finetuned to bring out the best image quality for the input.

- Film: for home theater.
- Video: for video or TV source.
- Graphics: for image source.
- Standard: for standardized setting.

DynamicBlack

DynamicBlack enables the projector to automatically optimize the display of dark movie scenes enabling them to be shown in incredible detail.

Color Temp.

If set to cold temperature, the image looks more blueish (cold image). If set to warm temperature, the image looks more reddish (warm image).

Color Space

Select an appropriate color matrix type from AUTO, RGB, RGB(0-255), RGB(16-235) or YUV.

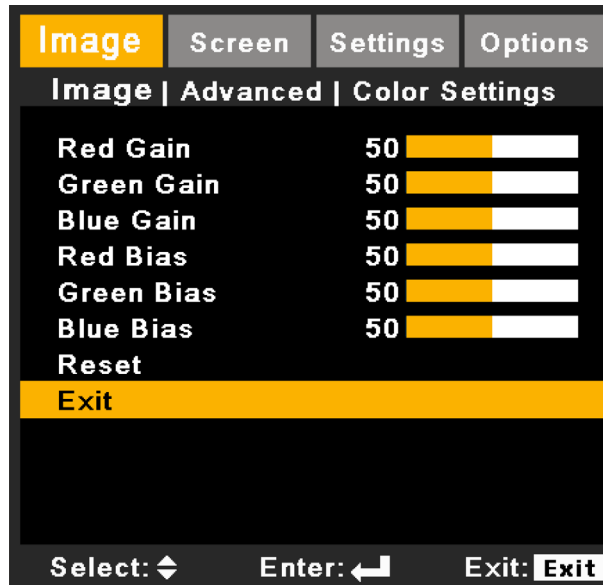
Note: “RGB(0-255)” and “RGB(16-235)” are only supported for HDMI source.

Color Settings

Press ◀ into the next menu and then use ▲ or ▼ to select item.

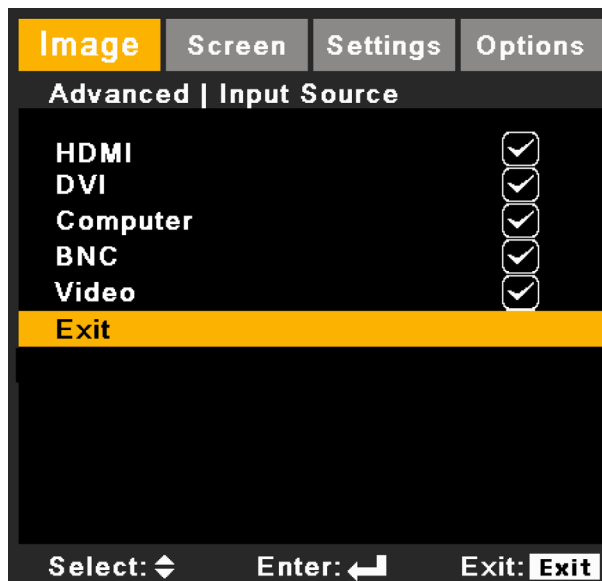
- Red Gain/Green Gain/Blue Gain/Red Bias/Green Bias/Blue Bias: Use ◀ or ▶ to Red, Green, or Blue for Gain (contrast) and Bias (brightness).
- Reset: Choose “Yes” to return the factory default settings for color adjustments.

USER CONTROLS



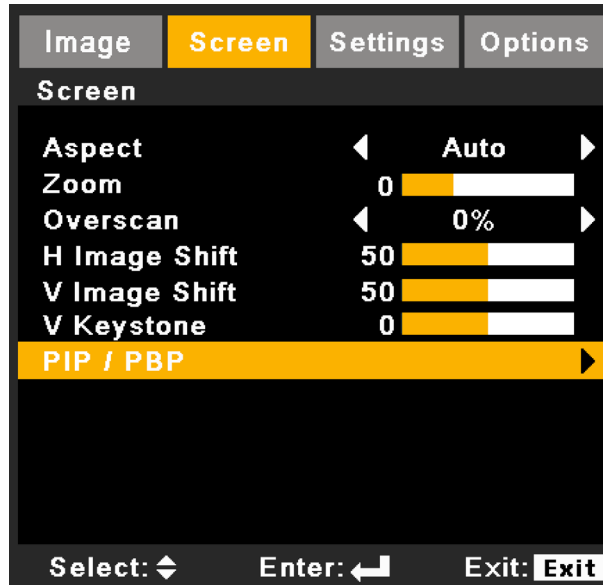
Input Source

Use this option to enable / disable input sources. Press ↵ to enter the sub menu and select which sources you require. Press "Enter" to finalize the selection. The projector will not search for inputs that are not selected.



USER CONTROLS

SCREEN



Aspect

Use this function to choose your desired aspect ratio.

- 4:3: This format is for 4:3 aspect input sources.
- 16:9: This format is for 16:9 aspect input sources, like HDTV and DVD enhanced for Wide screen TV.
- Native: This format displays the original image without any scaling.
- Auto: Automatically selects the appropriate display format.

Zoom

- Press the ◀ button to reduce the size of an image.
- Press the ▶ button to magnify an image on the projection screen.

Overscan

Overscan function removes the noise in a video image. Overscan the image to remove video encoding noise on the edge of video source.

Note:

*Each I/O has different settings of "Overscan".
"Overscan" and "Zoom" can't work at same time.*

H Image Shift

Shift the projected image position horizontally.

V Image Shift

Shift the projected image position vertically.

V Keystone

Press the ◀ or ▶ to adjust image distortion vertically and make a squarer image.

Note:




*This function is not available when option board type1 is equipped.
Keystone can be adjusted in "SCREEN"->"Geometry"->"Keystone" in such case.
Projected picture can't be adjusted square by V keystone when lens is shifted from the center.*

USER CONTROLS

SCREEN | PIP / PBP



Screen

-  Single Screen: Projection single window.
-  PIP Screen: Main source is at large window; PIP source is at small window and displays in the corner of the main window.
-  PBP Screen: Main source is at the left window and PBP source is at the right window, they are equal sizes and side by side.

PIP Location

Choose the PIP screen position on the display screen.

PIP Size

Choose the PIP size from 1/16, 1/25 or 1/36 on the display screen.

PIP / PBP Source

Choose the source to switch PIP/PBP window source.

Swap

Press to swap the sources of main window and PIP/PBP window.

Some source/signal combinations may not be compatible with PIP/PBP function. Please refer to the table below:

	PW392C Port 0		PW392C Port 1		
	HDMI	Computer	BNC	Video	DVI-D
HDMI	X	X	O	O	O
Computer	X	X	O	O	O
BNC	O	O	X	X	X
Video	O	O	X	X	X
DVI-D	O	O	X	X	X

Note:

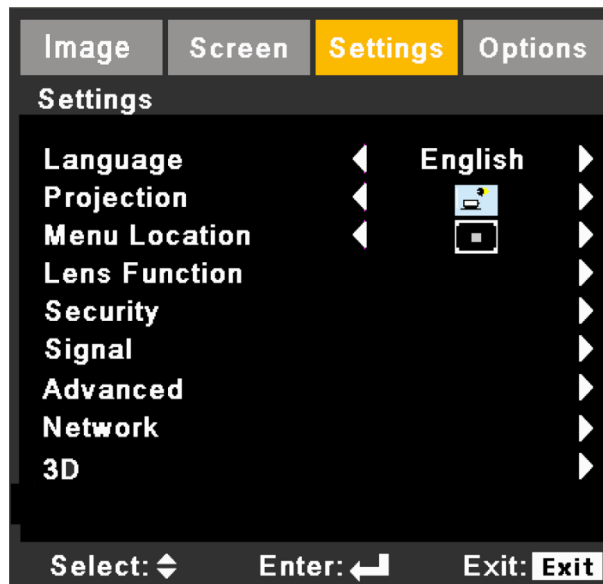
Remote control function when PIP is on:

Source key: Change main window's source.

Direct input source keys: Change the source in a window which signal in the same group (HDMI/Computer or DVI/BNC/Video) is displayed

USER CONTROLS

SETTING







Language

Choose the multilingual OSD menu. Press ◀ or ▶ into the sub menu and then use the ▲ or ▼ to select your preferred language. Press “Enter” to finalize the selection.



Projection

-  Front-Desktop
This is the default selection. The image is projected straight on the screen.
-  Rear-Desktop
When selected, the image will appear reversed.
-  Front-Ceiling
When selected, the image will turn upside down.
-  Rear-Ceiling
When selected, the image will appear reversed in upside down position.

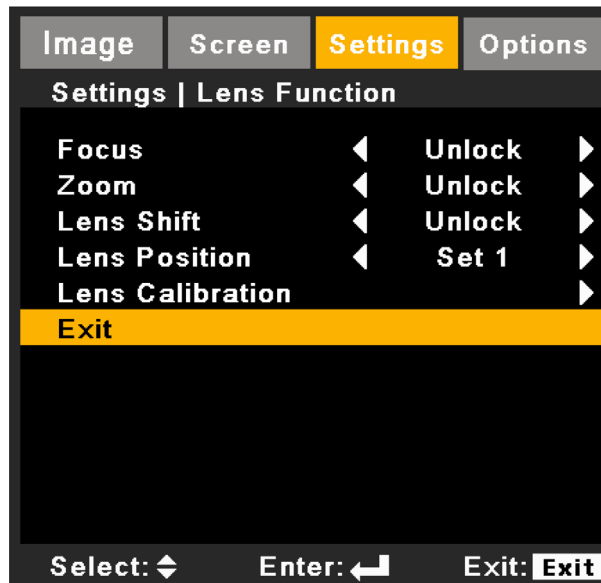
Note: Rear-Desktop and Rear-Ceiling are to be used with a translucent screen.

Menu Location

Choose the menu location on the display screen.

USER CONTROLS

SETTING | Lens Function



Focus

Adjust focus function on the projected image.

Zoom

Adjust zoom function on the projected image.

Lens Shift

Shift the projected image.

- Lock: This function can not be used by user.
- Unlock: This function can be used by user.

Lens Position

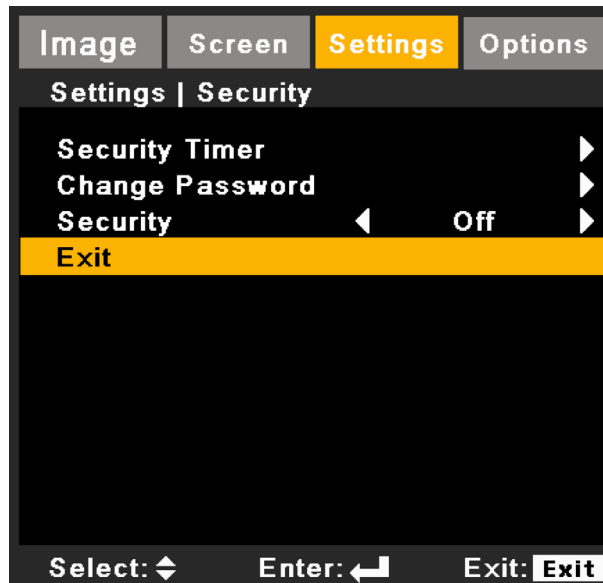
- Set1/Set2/Set3 : users can record lens 3 positions
- Select : move lens to selected position
- Save: save present position

Lens Calibration

Perform calibration and return lens to the center position.

USER CONTROLS

SETTING | Security



Security Timer

Use this function to set the how long (Month/Day/Hour) the projector can be used. Once this time has elapsed you will be requested to enter your password again.

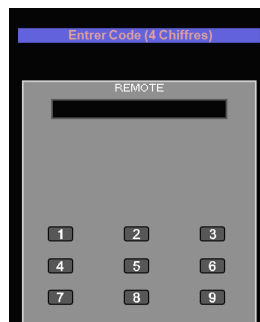
Change Password

- First time:
 1. Press “←” to set the password.
 2. The password has to be 4 digits.
 3. Use number button on the remote to enter your new password and then press “←” key to confirm your password.
- Change Password:
 1. Press “←” to input old password.
 2. Use number button to enter current password and then press “←” to confirm.
 3. Enter new password (4 digits in length) using the number buttons on the remote, then press “←” to confirm.
 4. Enter new password again and press “←” to confirm.
- If the incorrect password is entered 3 times, the projector will automatically shut down.
- If you have forgotten your password, please contact the dealer for support.

Note:

Password default value is “1234” (first time).

Always keep the password in your files. If the password is forgotten or lost, please contact your local authorized service center.

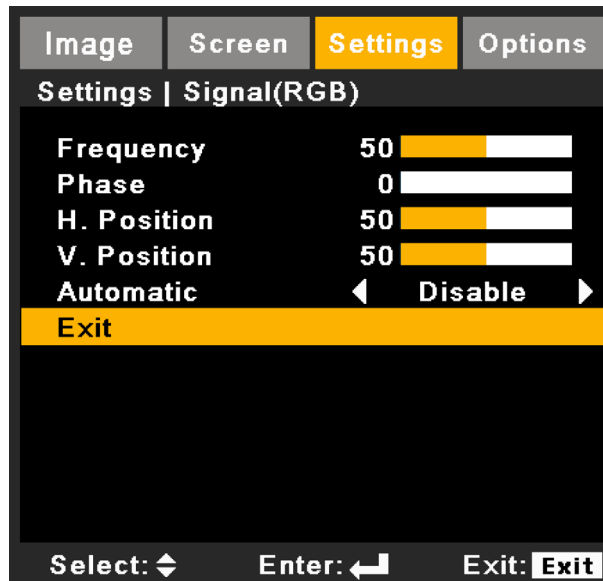


Security

- On: Choose “On” to use security verification when turning on projector.
- Off: Choose “Off” to be able to switch on the projector without password verification.

USER CONTROLS

SETTING | Signal (RGB)



Frequency

Change the display data frequency to match the frequency of your computer's graphic card. Use this function only if the image appears to flicker vertically.

Phase

Synchronize the signal timing of the display with the graphic card. If the image appears to be unstable or flickers, use this function to correct it.

H. Position

- Press the ◀ to move the image left.
- Press the ▶ to move the image right.

V. Position

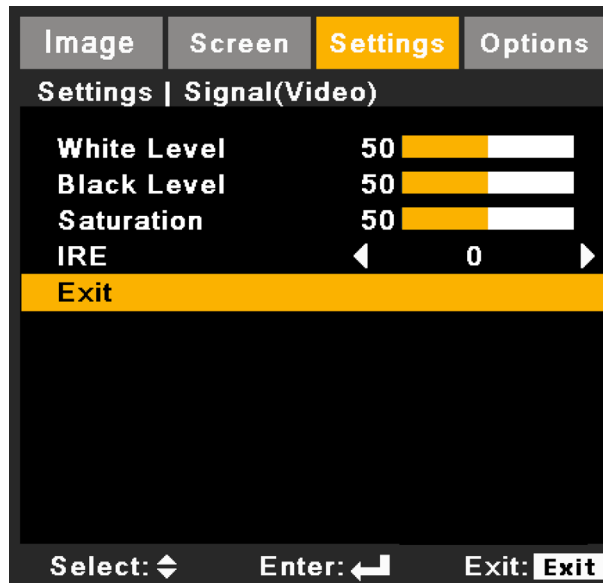
- Press the ◀ to move the image down.
- Press the ▶ to move the image up.

Automatic

Automatically detects the signal. If you use this function, the phase, frequency, H.Position, V.Position items are grayed out, and if signal is not automatic, the phase, frequency, H.Position, V.Position items will appear for user to manually tune and saved in settings after that for next time projector turns off and on again.

USER CONTROLS

SETTING | Signal (Video)



Note: "Signal" is only supported when the source is Video.

White Level

Allow user adjust White Level when inputting Video signals.

Black Level

Allow user adjust Black Level when inputting Video signals.

Saturation

Adjust a video image from black and white to fully saturated color.

- Press the ◀ to decrease the amount of saturation in the image.
- Press the ▶ to increase the amount of saturation in the image.

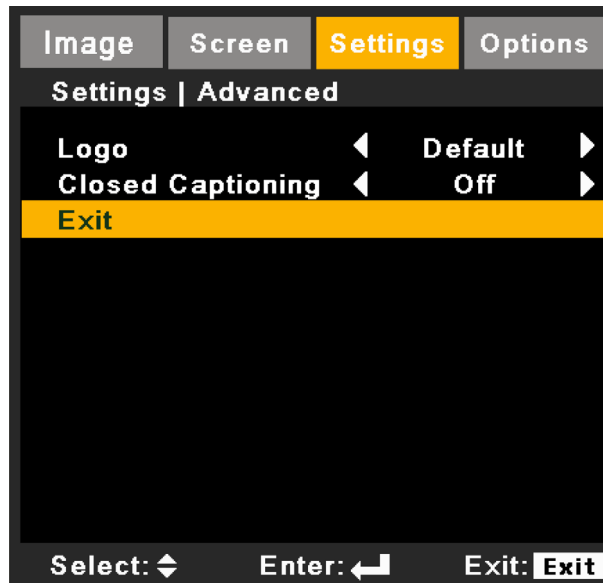
IRE

Adjust setup(black) level of composite video signals.

Note: "IRE" is only supported on NTSC signal.

USER CONTROLS

SETTING | Advanced



Logo

Use this function to set the desired startup screen. If changes are made they will take effect the next time the projector is powered on.

The function is not available when PIP is on.

- Default: The default startup screen.
- Neutral: Logo is not displayed on startup screen.

Closed Captioning

If changes are made they will take effect the next time the projector is powered on.

- Off: select "off" to turn off the closed captioning feature.
- CC1: CC1 language: American English.
- CC2/CC3/CC4: CC2/CC3/CC4 language (depending on the TV channel of the user): Spanish, French, Portuguese, German, Danish.

USER CONTROLS

SETTING | Network



Network State

Display the network connection status.

LAN setting is not available when LAN is disconnected.

DHCP

Use this function to select your desired startup screen. If you change the setting from one to another, when you exit the OSD menu, the new setting will take effect on next open.

- On: Assign an IP address to the projector from an external DHCP server automatically.

When making a connection in the local area network.

1. Connect the computer and the projector to your network.
2. Press the 'menu' key in the remote controller.
3. Select Setting -> Network -> DHCP (as following).



4. DHCP mode selects 'On.'

If IP Address is 0.0.0.0, please check the connection and try again.

If still can not get the IP Address, please contact your network administrator.

- Off: Assign an IP address manually.

IP Address

Select an IP address.

Subnet Mask

Select subnet mask number.

Gateway

Select the default gateway of the network connected to the projector.

DNS

Select DNS number.

Apply

Press "⏪" and then choose "Yes" to apply the selection.

Note: All of the new settings of the non-DHCP mode shall be triggered by "Yes".

USER CONTROLS

Control System IP Address

Select an IP address for Crestron Control System.

Control System IP ID

Select an IP ID for Crestron Control System.

Control System Port

Select a connection port for Crestron Control System.

USER CONTROLS

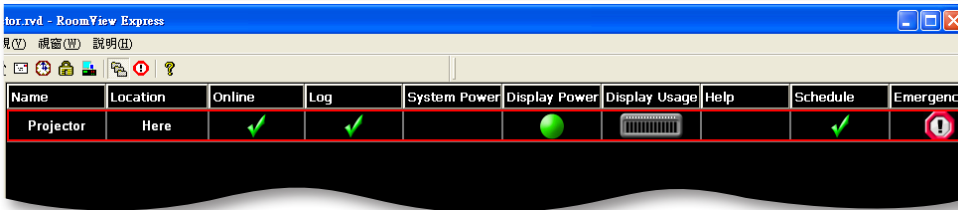
Crestron RoomView Control Tool

Crestron RoomView™ provides a central monitoring station for 250+ control systems on a single Ethernet network (more are possible, the number depends on the combination of IP ID and IP address). Crestron RoomView monitors each projector, including projector's online status, system power, lamp life, network setting and hardware faults, plus any custom attribute as defined by the Administrator.

The Administrator can add, delete, or edit room information, contact information and events, which are logged automatically by the software for all users. (Operation UI as following image)

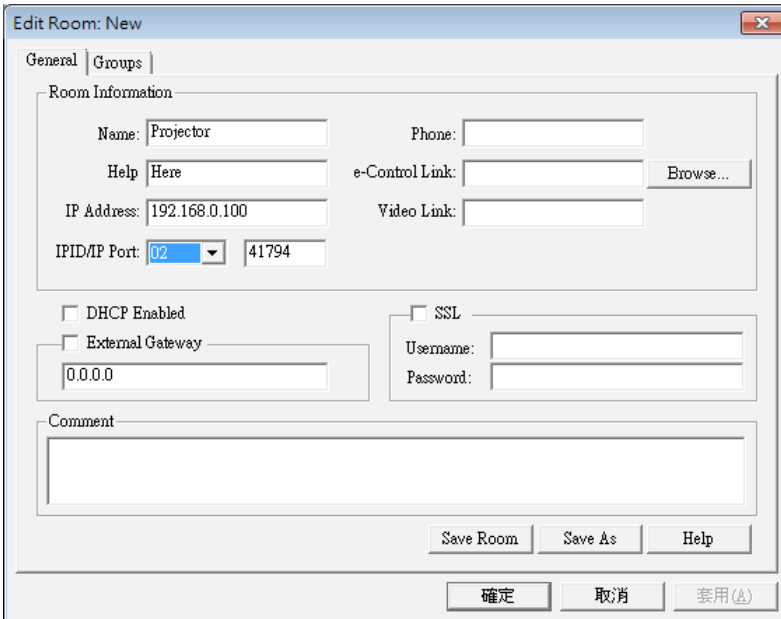
Note: Crestron RoomView function support is dependent on models.

1. Main Screen



2. Edit Room

On the “Edit Room” page, enter the IP Address (or hostname) as shown on the projector’s on-screen display (OSD) menu, and “02” for IPID, “41794” for the reserved Crestron control port.



About Crestron RoomView™ setting and command method, please access below website to get RoomView™ User Guide and more information:
<http://www.crestron.com>

USER CONTROLS

3. Edit Attribute

General | Alert | Groups | Rooms | Contacts

Attribute Properties

Signal Name: Graphic: Off On
Device:
Signal Type: Digital
Join Number: 50 Default Max. Value: 1

Options

Apply attribute to all rooms Display on main view
 Apply attribute to all contacts Show on context menu
 Record attribute changes to log

4. Edit Event

General | Rooms

Event Properties

Name: Display Off Enable this event
Type: Digital Repeat event
Join: 6

Schedule

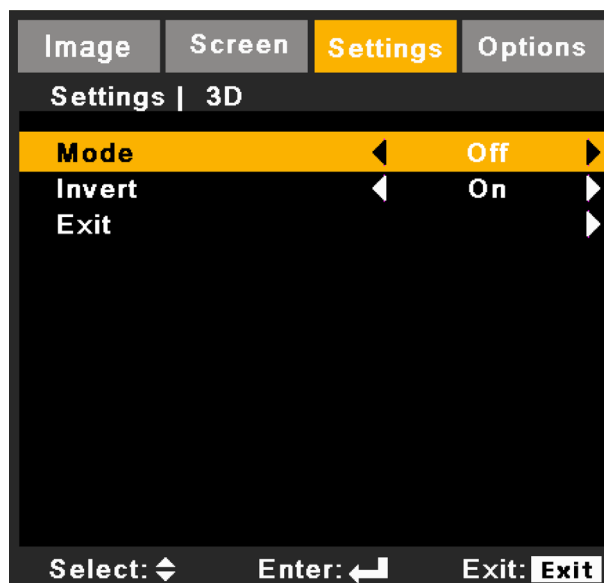
Start Date: 2016/ 2/23 Weekdays Weekends
End Date: 2016/ 2/23 Monday Saturday
Time: 上午 12:00:00 Tuesday Sunday
 Wednesday
 Thursday
 Friday

***For more information, please visit
<http://www.crestron.com> & www.crestron.com/getroomview.***

Network supports Crestron (Room View), AMX (Device Discovery Beacon Validation Tool) , PJLink and RS232 control.

USER CONTROLS

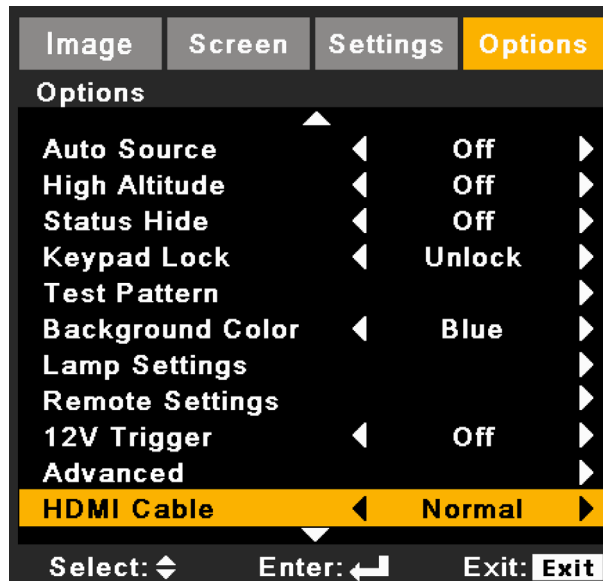
SETTING | 3D



- Mode: on is 3D enabled, off is 3D disabled.
- Invert: when 3D synchronous error, user can on/off this item to correct synchronous.

USER CONTROLS

OPTIONS



Auto Source

- On: The projector will search for other signals if the current input signal is lost.
- Off: The projector will not search for other signals if the current input signal is lost.

Note:

Press direct source key on remote controller, it will change source directly and automatically set the Source Lock to "ON".

To turn off the keypad lock, press and hold "Enter" key on top of the projector for 5 seconds.

High Altitude

When "On" is selected, the fans will spin faster. This feature is useful in high altitude areas where the air is thin.

Status Hide

- On: Choose "On" to hide the info message.
- Off: Choose "Off" to show the "searching" message.

Keypad Lock

When the keypad lock function is "On", the control panel will be locked however, the projector can be operated by the remote control. By selecting "Off", you will be able to reuse the control panel.

Test Pattern

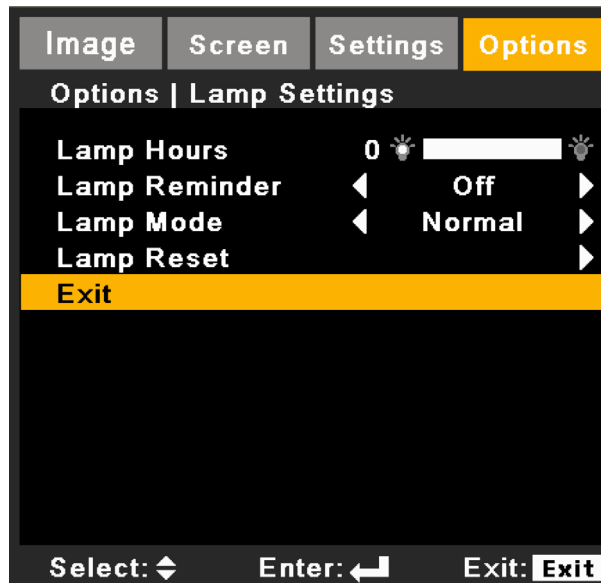
Display a test pattern. There are Grid, White and None.

Background Color

Use this feature to display a "Blue", "Black", "Red", "Green", or "White" screen when no signal is available.

USER CONTROLS

OPTIONS | Lamp Settings



Lamp Hours

Display the projection time.

Lamp Reminder

Choose this function to show or to hide the warning message when the changing lamp message is displayed. The message will appear 30 hours before suggested replacement of lamp.

Lamp Mode

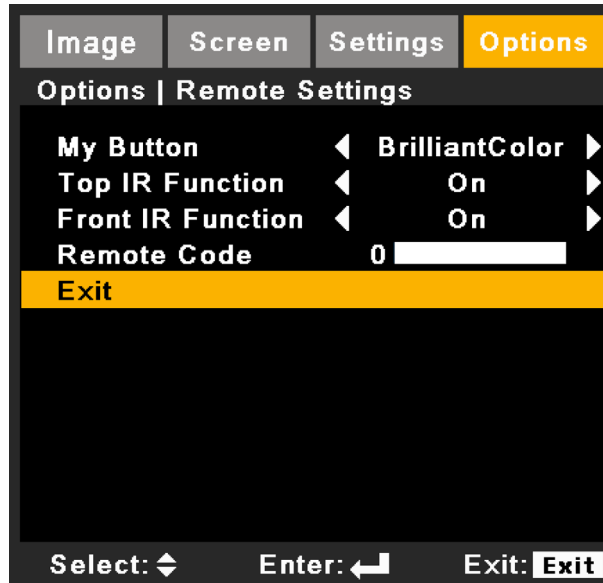
- Normal: Choose “Normal” to increase the brightness.
- ECO: Choose “ECO” to dim the projector lamp which will lower power consumption and extend the lamp life.
- Advanced: the lamp power can be adjusted in detail.

Lamp Reset

Reset the lamp hour counter after replacing the lamp.

USER CONTROLS

OPTIONS | Remote Settings



My Button

Choose your desired function from “BrilliantColor”, “Gamma”, “DynamicBlack”, “Color Temp.”, “Projection”, “Projector ID” or “HDMI Cable”.

Top IR Function

When this function is “On”, the projector can be operated by the remote control from top IR receiver. By selecting “Off”, you will be able to use the control panel keys or operate by the remote control from front IR receiver.

Front IR Function

When this function is “On”, the projector can be operated by the remote control from front IR receiver. By selecting “Off”, you will be able to use the control panel keys or operate by the remote control from top IR receiver.

Remote Code

Set remote code of the projector.

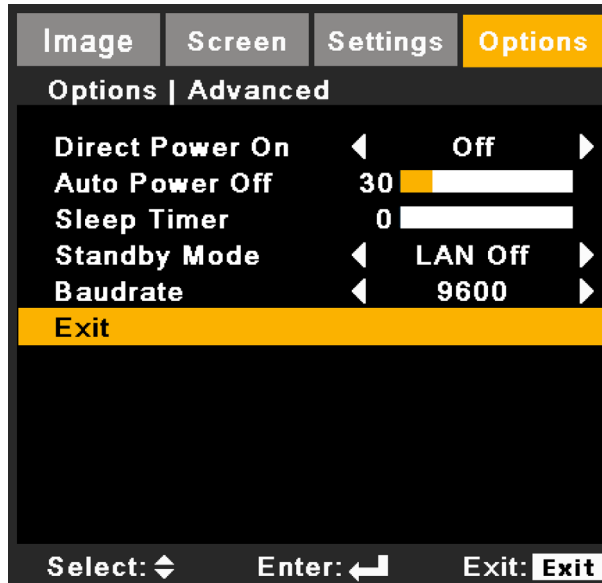
- Default code (common code): 00
- Remote code: 01 ~ 99

12V Trigger

12V trigger provides a standard trigger for motorized screens.

USER CONTROLS

OPTIONS | Advanced



Direct Power On

Choose “On” to activate Direct Power mode. The projector will automatically power on when AC power is supplied, without pressing the “⏻” key on the projector control panel or on the remote control.

Auto Power Off

Sets the countdown timer. The countdown timer will start, when there is no signal being sent to the projector. The projector will automatically power off when the countdown has finished (in minutes).

Sleep Timer

Sets the countdown timer. The countdown timer will start, with or without a signal being sent to the projector. The projector will automatically power off when the countdown has finished (in minutes).

Standby Mode

- LAN On: Choose “LAN On” when you control the projector via the LAN terminal during power standby.
- LAN Off: Choose “LAN Off” to disable the LAN terminal and reduces the power consumption during the power standby.

Baudrate

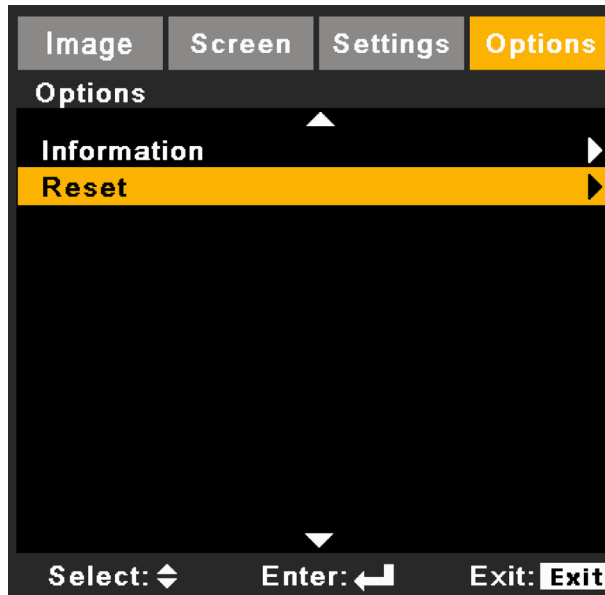
Select serial port baudrate from “9600”, “19200”, or “38400”.

HDMI Cable

Specify the HDMI cable length. Available options: Normal / Long / Short.

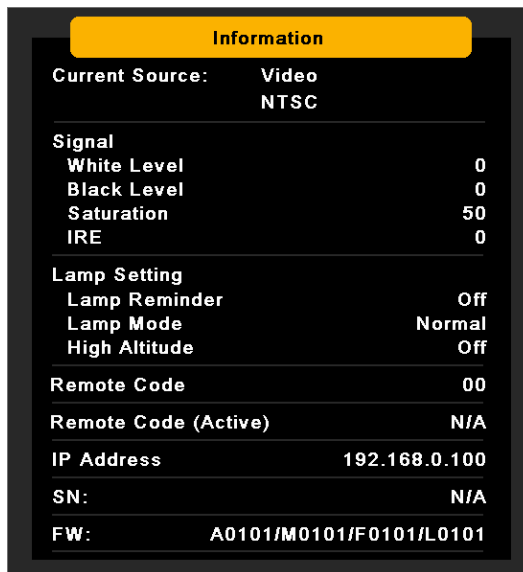
USER CONTROLS

OPTIONS (Continue)



Information

Display the projector information for source, resolution, and software version on the screen.



Note:

Remote code: show the remote code of the projector.

Remote code(Active): show the remote code of the remote control. To use this function, press info. key on the remote. Remote code will be shown.

Reset

Choose "Yes" to return the display parameters on all menus to the factory default settings. Remote Code is reset to 00.

The following settings will still remain: Language, Projection, High Altitude Mode, Security Settings, and Keystone.

APPENDICES

Troubleshooting

If you experience a problem with your projector, please refer to the following information. If a problem persists, please contact your local reseller or service center.

Image Problems

? No image appears on-screen

- ▶ Ensure all the cables and power connections are correctly and securely connected as described in the “Installation” section.
- ▶ Ensure the pins of connectors are not crooked or broken.
- ▶ Check if the projection lamp has been securely installed.
- ▶ Make sure you have removed the lens cover and the projector is switched on.

? Partial, scrolling or incorrectly displayed image

- ▶ Press "SYNC" on the control panel or the remote control.
- ▶ If you are using a PC:
 - For Windows 95, 98, 2000, XP, Windows 7:
 1. Open the “My Computer” icon, the “Control Panel” folder, and then double click on the “Display” icon.
 2. Select the “Settings” tab.
 3. Verify that your display resolution setting is lower than or equal to UXGA (1600 x 1200).
 4. Click on the “Advanced Properties”.

If the projector is still not projecting the whole image, you will also need to change the monitor display you are using. Refer to the following steps.

1. Verify the resolution setting is lower than or equal to UXGA (1600 x 1200).
 2. Select the “Change” button under the “Monitor” tab.
 3. Click on “Show all devices”. Next, select “Standard monitor types” under the SP box; choose the resolution mode you need under the “Models” box.
 4. Verify that the resolution setting of the monitor display is lower than or equal to UXGA (1600 x 1200).
- ▶ If you are using a Notebook:
 - First, follow the steps above to adjust resolution of the computer.
 - Press the toggle output settings. example: [Fn]+[F4]

Notebook Brand	Function Keys
Acer	[Fn]+[F5]
Asus	[Fn]+[F8]
Dell	[Fn]+[F8]
Gateway	[Fn]+[F4]
IBM/Lenovo	[Fn]+[F7]
HP/Compaq	[Fn]+[F4]
NEC	[Fn]+[F3]
Toshiba	[Fn]+[F5]
Mac Apple	System Preference -> Display -> Arrangement -> Mirror display

- ▶ If you experience difficulty changing resolutions or your monitor freezes, restart all equipment including the projector.

APPENDICES

? **The screen of the Notebook or PowerBook computer is not displaying your presentation**

Some Notebook PCs may deactivate their own screens when a second display device is in use. Each has a different way to be reactivated. Refer to your computer's documentation for detailed information.

? **Image is unstable or flickering**

- ▶ Adjust the "Phase" to correct it.
- ▶ Change the monitor color setting from your computer.

? **Image has vertical flickering bar**

- ▶ Use "Frequency" to make an adjustment.
- ▶ Check and reconfigure the display mode of your graphic card to make it compatible with the projector.

? **Image is out of focus**

- ▶ Make sure the lens cover is removed.
- ▶ Adjust the Focus function for the projector lens.
- ▶ Make sure the projection screen is between the required distance.

? **The image is stretched when displaying 16:9 DVD title**

- ▶ When you play anamorphic DVD or 16:9 DVD, the projector will show the best image when the projector display mode is set to 16:9 in the OSD.
- ▶ If you play 4:3 format DVD titles, please change the format to 4:3 in the projector OSD.
- ▶ If the image is still stretched, you will also need to adjust the aspect ratio by referring to the following:
- ▶ Please setup the display format as 16:9 (wide) aspect ratio type on your DVD player.

? **Image is too small or too large**

- ▶ Move the projector closer to or further from the screen.
- ▶ Press "Menu" on the control panel. Go to "SCREEN" --> "Aspect" and try the different settings.

? **Image has slanted sides:**

- ▶ If possible, reposition the projector so that it is centered on the screen and below the bottom of the screen.
- ▶ Press the "Keystone" button on the remote control, until the sides are vertical.

? **Image is reversed**

- ▶ Adjust the "SETTING" --> "Projection" to correct it.

? **Image does not display in 3D**

- ▶ Check if the battery of 3D glasses is drained
- ▶ Check if 3D glasses is turned on
- ▶ Check 3D supported format timings is correct or not
 - 1280x720@120Hz frame sequential
 - 1024x768@120Hz frame sequential
 - 800x600@120Hz frame sequential

APPENDICES

Projector Problems

? The projector stops responding to all controls

- ▶ If possible, turn off the projector, then unplug the power cord and wait at least 60 seconds before reconnecting power.
- ▶ Check that “Keypad Lock” is not activated by trying to control the projector with the remote control.

? Lamp burns out or makes a popping sound

- ▶ When the lamp reaches its end of life, it will burn out and may make a loud popping sound. If this happens, the projector will not turn on until the lamp module has been replaced. To replace the lamp, follow the procedures in the “Replacing the Lamp” section.

? If the remote control does not work

- ▶ Check if the operating angle of the remote control is within $\pm 30^\circ$ both horizontally and vertically on one of the IR receivers on the projector.
- ▶ Make sure there is no obstruction between the remote control and the projector. Move to within 12 m ($\pm 0^\circ$) of the projector.
- ▶ Make sure the batteries are inserted correctly.
- ▶ Replace batteries if they are exhausted.
- ▶ Ensure that you have set your remote to the correct IR code setting.

? When making a direct connection from your computer to the projector

- ▶ If you have network connection problem from your computer to the projector, please refer to the computer setting as below or contact with web administrator.

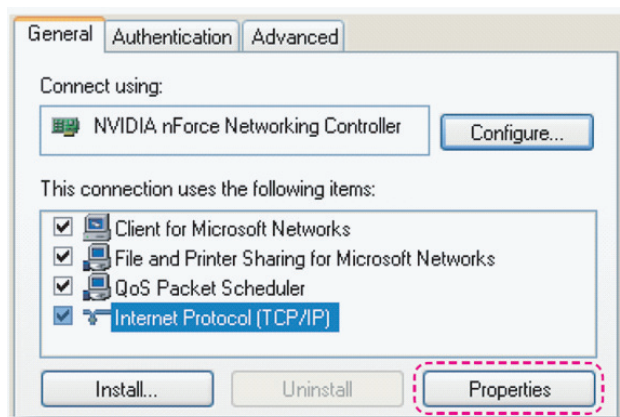
Step 1: Find an IP Address (192.168.0.100) from LAN function of projector.



Step 2: Select “Apply” and push the “Enter” button. Once the setting is saved, exit the OSD by pushing “Menu” button.

Step 3: To open Network Connections, click **Start**, click **Control Panel**, click **Network and Internet Connections**, and then click **Network Connections**. Click the connection you want to configure, and then, under **Network Tasks** , click **Change settings of this connection**.

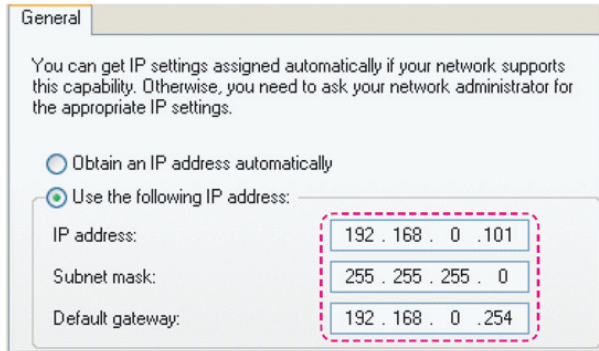
Step 4: On the **General** tab, under **This connection use the following items**, click Internet Protocol(TCP/IP), and then click “**Properties**”.



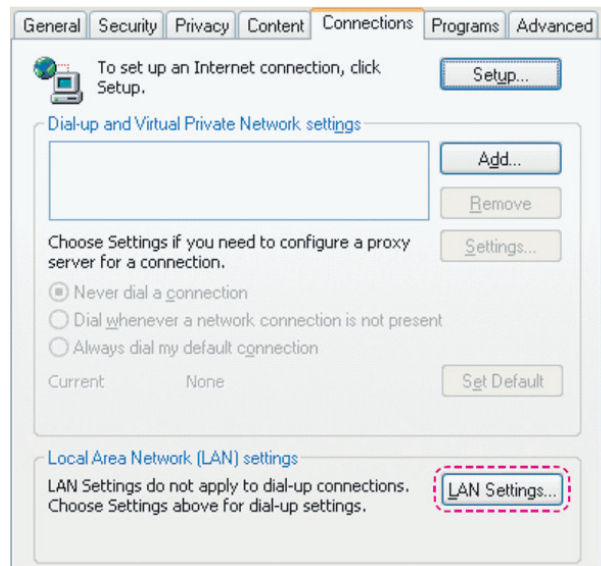
APPENDICES

Step 5: Click **Use the following IP address**, and type in as below:

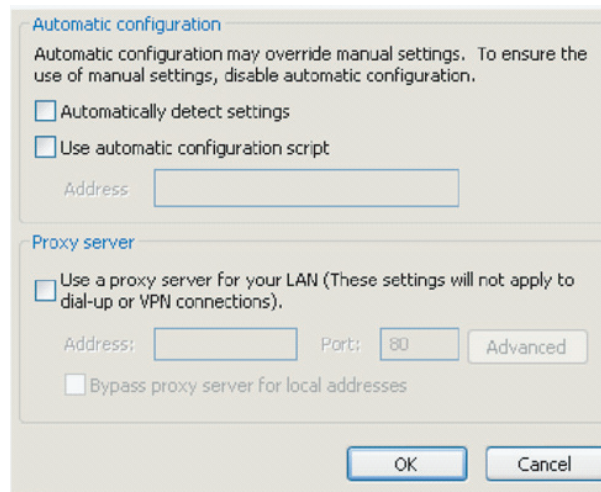
- 1) IP address: 192.168.0.101
- 2) Subnet mask: 255.255.255.0
- 3) Default gateway: 192.168.0.254



Step 6: To open Internet Options, click IE web browser, click Internet Options, click the **Connections** tab and click **“LAN Setting...”**.



Step 7: All items in the **Local Area Network (LAN) Setting** window must unchecked. Then click **“OK”** button twice.

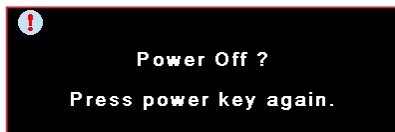


Step 8: Connect a cat5 Ethernet cross-over cable between the projector and the computer.

APPENDICES

On Screen Messages

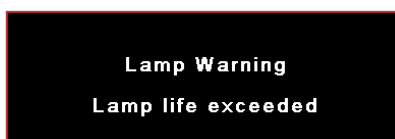
- Power off confirm



- Lamp error



- Lamp Life warning

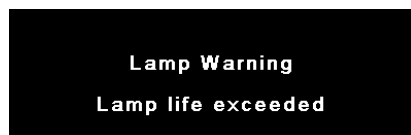


- Filter error

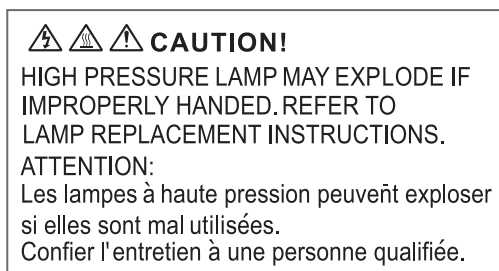



Replacing the Lamp

A warning message will be displayed once the lamp has surpassed life expectancy.




At this point, it is recommended to change the lamp as soon as possible. Please contact the dealer to acquire a lamp.

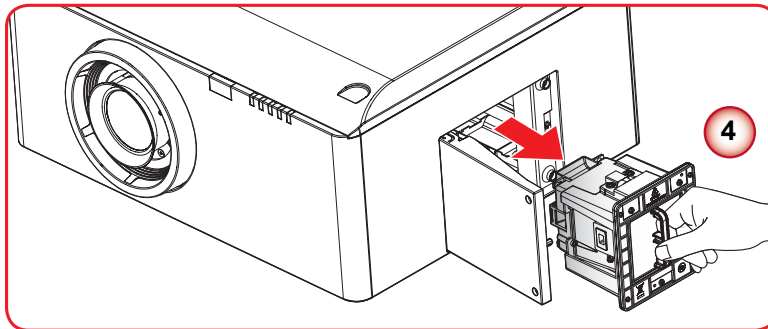
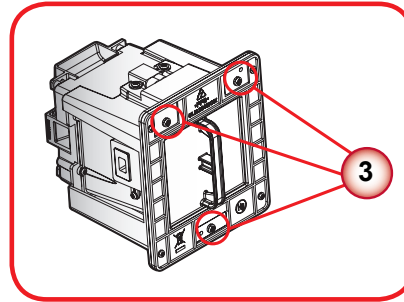
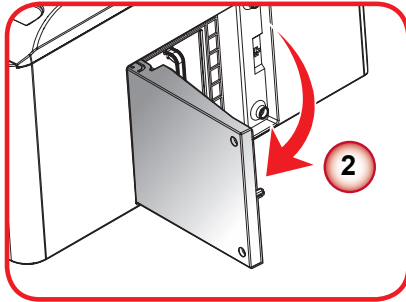
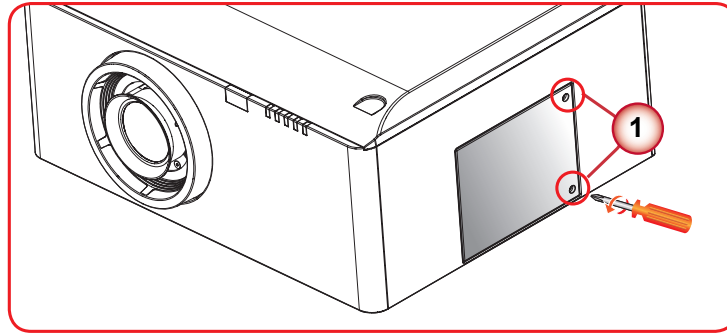


 Warning: If ceiling mounted, please use caution when opening the lamp access panel. It is recommended to wear safety glasses if changing the bulb when ceiling mounted. "Caution must be used to prevent any loose parts from falling out of projector."

 Warning: Lamp compartment is hot! Allow it to cool down before changing lamp!

 Warning: To reduce the risk of personal injury, do not drop the lamp module or touch the lamp bulb. The bulb may shatter and cause injury if it is dropped.

APPENDICES



Lamp Replacing Procedure:

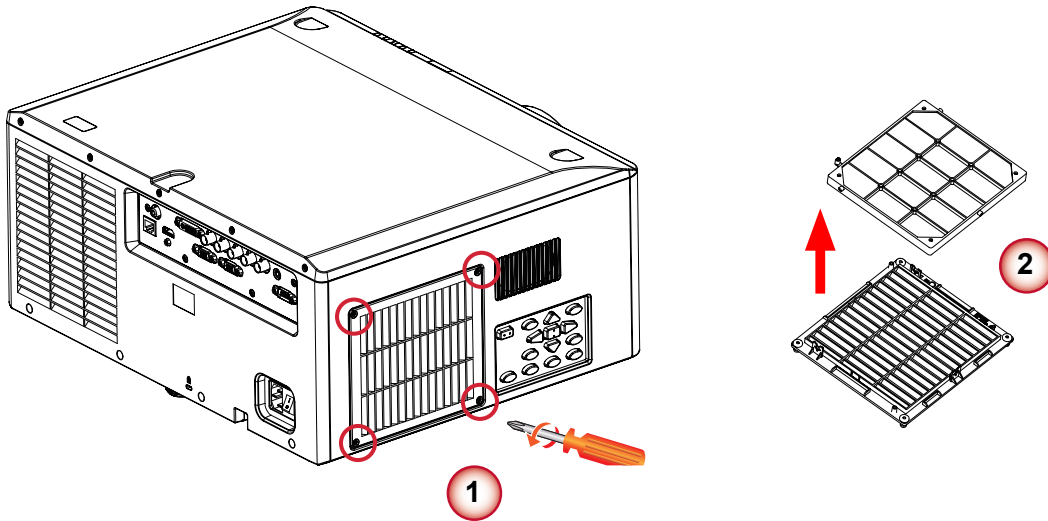
1. Switch off the power to the projector by pressing the “**⏻**” button.
2. Allow the projector to cool down for at least 60 minutes.
3. Disconnect the power cord.
4. Unscrew the two screws on the lamp door. ①
5. Open and pull up the lamp door. ②
6. Unscrew the three screws on the lamp housing. ③
7. Pull out the lamp module slowly and carefully. ④

To replace the lamp module, reverse the previous steps.

8. Turn on the projector and use “Lamp Reset” after the lamp module is replaced.
Lamp Reset: (i) Press “Menu” → (ii) Select “OPTIONS” → (iii) Select “Lamp Settings” → (iv) Select “Lamp Reset” → (v) Select “Yes”.

APPENDICES

Filter maintenance



Filter Replacing Procedure:

1. Switch off the power to the projector by pressing the “**⏻**” button.
2. Allow the projector to cool down for at least 60 minutes.
3. Disconnect the power cord.
4. Unscrew the four screws on the filter cover. ①
5. Pull out the filter cover and replace the filter. ②

APPENDICES

Compatibility Modes

- Computer Compatibility (PC)

Signal	Resolution	Frequency H. (KHz)	Refresh Rate (Hz)	Video	Digital	Analog	Remark
NTSC	-	15.734	60	○	-	-	
PAL/SECAM	-	15.625	50	○	-	-	
	640 x 350	31.5	70.1		○	○	70Hz
	640 x 400	37.9	85.1		○	○	85Hz
	720 x 400	31.5	70		○	○	
	720 x 576		50		○	○	
VGA	640 x 480	31.5	60		○	○	
VGA	640 x 480		67		○	○	
VGA	640 x 480	37.9	72.8		○	○	72Hz
VGA	640 x 480	37.5	75		○	○	
VGA	640 x 480	43.3	85		○	○	
SVGA	800 x 600	35.2	56.3		○	○	56Hz
SVGA	800 x 600	37.9	60.3		○	○	60Hz
SVGA	800 x 600	46.9	75		○	○	
SVGA	800 x 600	48.1	72.2		○	○	72Hz
SVGA	800 x 600	53.7	85.1		○	○	85Hz
XGA	1024 x 768	48.4	60		○	○	
XGA	1024 x 768	56.5	70.1		○	○	70Hz
XGA	1024 x 768	60	75		○	○	
XGA	1024 x 768	68.7	85		○	○	
HD720	1280 x 720		50		○	○	
HD720	1280 x 720		60		○	○	
WXGA	1280 x 768	47.776	60		○	○	
WXGA	1280 x 768		75		○	○	
WXGA	1280 x 768		85		○	○	
WXGA-800	1280 x 800		60		○	○	
SXGA	1280 x 1024	64	60		○	○	
SXGA	1280 x 1024	80	75		○	○	
SXGA	1280 x 1024	91.1	85		○	○	
SXGA+	1400 x 1050		60		○	-	
UXGA	1600 x 1200	75	60		○	○	
HD1080	1920 x 1080		24		○	○	
HD1080	1920 x 1080		50		○	○	
HD1080	1920 x 1080		60		○	○	
WUXGA	1920 x 1200		60		○	○	Only support [RB] timing
HDTV	1920 x 1080	33.8	30	○	-	-	
	1920 x 1080	28.1	25	○	-	-	
	1920 x 1080i	28.125	50	-	○	○(SOG)	
	1920 x 1080i	33.75	60	-	○	○(SOG)	

APPENDICES

Signal	Resolution	Frequency H. (KHz)	Refresh Rate (Hz)	Video	Digital	Analog	Remark
	1920 x 1080p		24	-	o	o(SOG)	
	1920 x 1080p		25	-	o	o(SOG)	
	1920 x 1080p		30	-	o	o(SOG)	
	1920 x 1080p		50	-	o	o(SOG)	
	1920 x 1080p		60	-	o	o(SOG)	
	1280 x 720	45	60	o	-	-	
	1280 x 720p		50	-	o	o(SOG)	
	1280 x 720p		60	-	o	o(SOG)	
SDTV	720 x 576	31.3	50	o	-	-	
	720 x 576i	15.625	50	-	o	o(SOG)	
	720 x 576p		50	-	o	o(SOG)	
	720 x 480	31.5	60	o	-	-	
	720 x 480i	15.734	60	-	o	o(SOG)	
	720 x 480p	31.5	60	-	o	o(SOG)	

- Computer Compatibility for MAC

Resolution	Refresh Rate (Hz)	Macbook compatibility		Macbook Pro (Intel) compatibility		Power Mac G5 compatibility		Power Mac G4 compatibility	
		Digital	Analog	Digital	Analog	Digital	Analog	Digital	Analog
800x600	60	o	o	o	o	-	-	o	-
800x600	72	o	o	o	o	-	o	o	o
800x600	75	o	o	o	o	-	o	o	o
800x600	85	o	o	-	o	-	o	o	o
1024x768	60	o	o	o	o	-	o	o	o
1024x768	70	o	o	o	o	-	o	o	o
1024x768	75	o	o	o	o	-	o	o	o
1024x768	85	o	o	o	o	-	o	o	o
1280x720	60	o	o	o	o	-	o	o	o
1280x768	60	o	o	o	o	-	-	-	o
1280x768	75	-	o	-	o	-	o	o	o
1280x768	85	-	o	-	o	-	-	-	o
1280x800	60	-	o	-	o	-	o	o	o
1280x1024	60	o	-	-	o	-	o	o	o
1280x1024	75	o	-	-	o	-	o	o	-
1920x1080	60	o	-	-	o	-	o	o	o
1920x1200 (*1)	60	o	-	-	o	-	o	o	o

APPENDICES

- HDMI timing table

Signal	Resolution	Frequency H. (KHz)	Refresh Rate (Hz)	Video	Digital	Analog	Remark
	640 x 350	31.5	70.1		○	○	70Hz
	640 x 400	37.9	85.1		○	○	85Hz
	720 x 400	31.5	70		○	○	
	720 x 576		50		○	○	
VGA	640 x 480	31.5	60		○	○	
VGA	640 x 480		67		○	○	
VGA	640 x 480	37.9	72.8		○	○	72Hz
VGA	640 x 480	37.5	75		○	○	
VGA	640 x 480	43.3	85		○	○	
SVGA	800 x 600	35.2	56.3		○	○	56Hz
SVGA	800 x 600	37.9	60.3		○	○	60Hz
SVGA	800 x 600	46.9	75		○	○	
SVGA	800 x 600	48.1	72.2		○	○	72Hz
SVGA	800 x 600	53.7	85.1		○	○	85Hz
XGA	1024 x 768	48.4	60		○	○	
XGA	1024 x 768	56.5	70.1		○	○	70Hz
XGA	1024 x 768	60	75		○	○	
XGA	1024 x 768	68.7	85		○	○	
HD720	1280 x 720		50		○	○	
HD720	1280 x 720		60		○	○	
WXGA	1280 x 768	47.776	60		○	○	
WXGA	1280 x 768		75		○	○	
WXGA	1280 x 768		85		○	○	
WXGA-800	1280 x 800		60		○	○	
SXGA	1280 x 1024	64	60		○	○	
SXGA	1280 x 1024	80	75		○	○	
SXGA	1280 x 1024	91.1	85		○	○	
SXGA+	1400 x 1050		60		○	-	
UXGA	1600 x 1200	75	60		○	○	
HD1080	1920 x 1080		24		○	○	
HD1080	1920 x 1080		50		○	○	
HD1080	1920 x 1080		60		○	○	
WUXGA	1920 x 1200		60		○	○	Only support [RB] timing
HDTV	1920 x 1080	33.8	30	○	-	-	
	1920 x 1080	28.1	25	○	-	-	
	1920 x 1080i	28.125	50	-	○	○(SOG)	
	1920 x 1080i	33.75	60	-	○	○(SOG)	
	1920 x 1080p		24	-	○	○(SOG)	
	1920 x 1080p		25	-	○	○(SOG)	
	1920 x 1080p		30	-	○	○(SOG)	

APPENDICES

Signal	Resolution	Frequency H. (KHz)	Refresh Rate (Hz)	Video	Digital	Analog	Remark
	1920 x 1080p		50	-	o	o(SOG)	
	1920 x 1080p		60	-	o	o(SOG)	
	1280 x 720	45	60	o	-	-	
	1280 x 720p		50	-	o	o(SOG)	
	1280 x 720p		60	-	o	o(SOG)	
SDTV	720 x 576	31.3	50	o	-	-	
	720 x 576i	15.625	50	-	o	o(SOG)	
	720 x 576p		50	-	o	o(SOG)	
	720 x 480	31.5	60	o	-	-	
	720 x 480i	15.734	60	-	o	o(SOG)	
	720 x 480p	31.5	60	-	o	o(SOG)	

Note: (*1)1920 x 1200 @60hz only support RB(reduced blanking).

APPENDICES

Remote Key Code

Default custom code => 32CD

Mode 00~99 => 3200~3299

Format => NEC

Key	Byte3	Byte4	Key	Byte3	Byte4
Sync (Auto Sync)	4	FB	Pattern	34	CB
Keystone	7	F8	My Button	8E	71
Up	11	EE	HDMI	16	E9
Down	14	EB	DVI	19	E6
Left	10	EF	BNC	1A	E5
Right	12	ED	Focus	8F	70
Mode(Color Mode)	5	FA	Zoom	61	9E
Aspect	64	9B	Shift (Lens shift)	8D	72
Enter	0F	F0	Memory (Lens shift memory)	8C	73
Power Off	2E	D1	RC ID	--	--
Power On	2	FD	Info.	25	DA
Exit	86	79	Reset (Default)	8B	74
Menu	0E	F1	RGB Gain (Color setting)	8A	75
Source	18	E7	Lamp PW (Lamp power)	88	77
Computer	1B	E4	PIP	87	78
Video	1C	E3	Blank	7F	80

Remote operation

1. Under below conditions, the remote will enter "sleep mode" after 60 seconds.

- No button pressed
- Multi-keys pressed simultaneously
- One key pressed continuously over 60 seconds

2. Remote ID switching

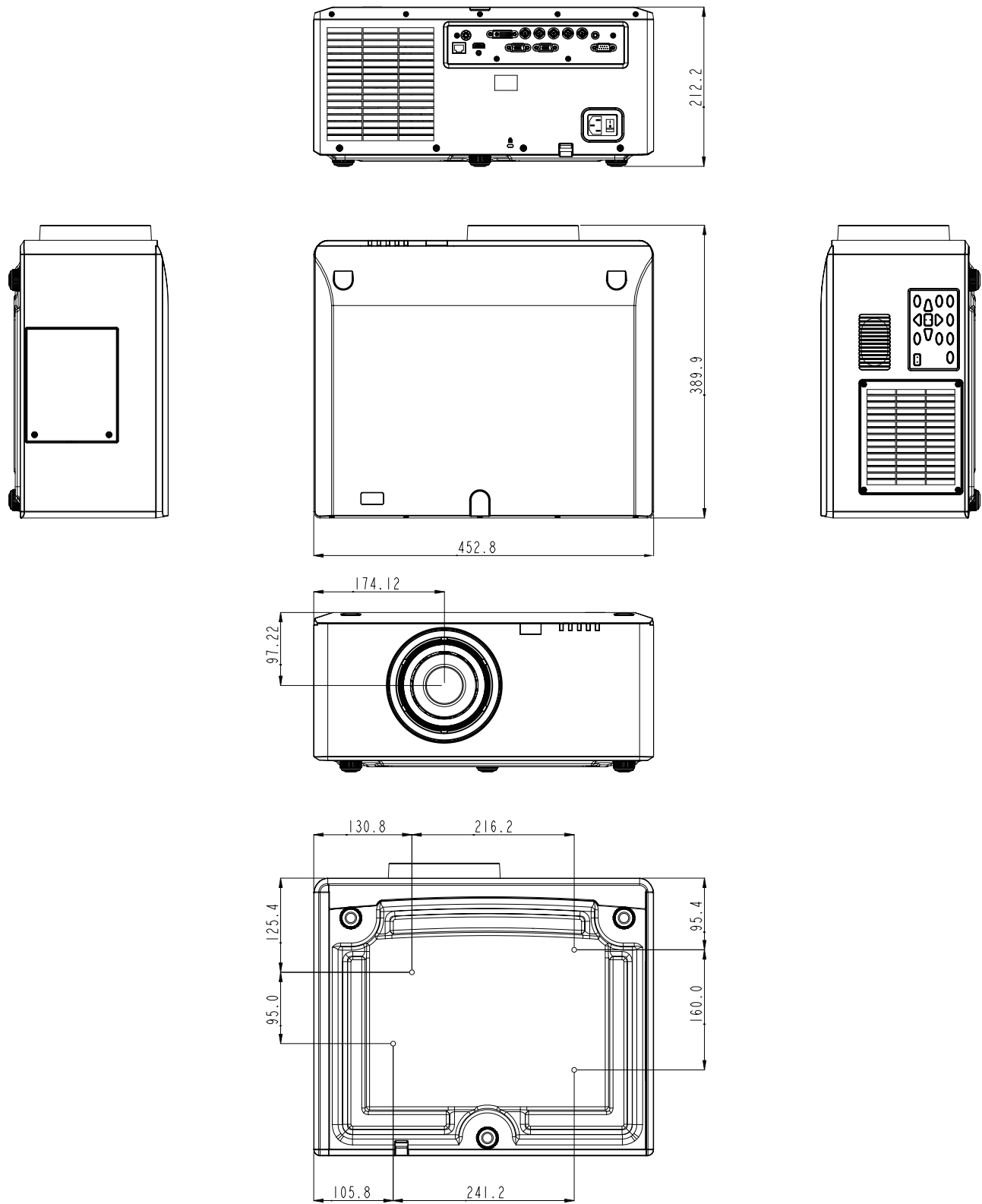
Press "RC ID" key for 1 seconds to enter switching mode.

- Default ID, press "RC ID" key for 5 seconds, ID will reset to default custom code (32CD), and this is a common code.
- Other ID, such as "01", press "0" + "1"; ID range 00 ~ 99
 - If LED flash 3 times quickly, this means switching setup successfully;
 - No any setting within 10 seconds, remote will exit the switching mode and keep the original ID.

APPENDICES

Cabinet dimension

Unit: mm



Screw type: M6 x 4

Maximum screw length: 10mm

APPENDICES

Trademarks

- DLP is trademark or registered trademark of Texas Instruments.
- IBM is a trademark or registered trademark of International Business Machines Corporation.
- Macintosh, Mac OS X, iMac, and PowerBook are trademarks of Apple Inc., registered in the U.S. and other countries.
- Microsoft, Windows, Windows Vista, Internet Explorer and PowerPoint are either a registered trademark or trademark of Microsoft Corporation in the United States and/or other countries.
- HDMI, the HDMI Logo and High-Definition Multimedia Interface are trademarks or registered trademarks of HDMI Licensing LLC.
- Other product and company names mentioned in this user's manual may be the trademarks or registered trademarks of their respective holders.

APPENDICES

ADDITIONAL INFORMATION

Optoma global offices

For service or support, please contact your local office.

USA

3178 Laurelview Ct.
Fremont, CA 94538, USA
www.optomausa.com

☎ 888-289-6786
📠 510-897-8601
✉ services@optoma.com

Canada

3178 Laurelview Ct.
Fremont, CA 94538, USA
www.optomausa.com

☎ 888-289-6786
📠 510-897-8601
✉ services@optoma.com

Latin America

3178 Laurelview Ct.
Fremont, CA 94538, USA
www.optomausa.com

☎ 888-289-6786
📠 510-897-8601
✉ services@optoma.com

Europe

42 Caxton Way, The Watford Business Park
Watford, Hertfordshire,
WD18 8QZ, UK
www.optoma.eu
Service Tel : +44 (0)1923 691865

☎ +44 (0) 1923 691 800
📠 +44 (0) 1923 691 888
✉ service@tsc-europe.com

Benelux BV

Randstad 22-123
1316 BW Almere
The Netherlands
www.optoma.nl

☎ +31 (0) 36 820 0253
📠 +31 (0) 36 548 9052

France

Bâtiment E
81-83 avenue Edouard Vaillant
92100 Boulogne Billancourt,
France

☎ +33 1 41 46 12 20
📠 +33 1 41 46 94 35
✉ savoptoma@optoma.fr

Spain

C/ José Hierro,36 Of. 1C
28522 Rivas VaciaMadrid,
Spain

☎ +34 91 499 06 06
📠 +34 91 670 08 32

Deutschland

Wiesenstrasse 21 W
D40549 Düsseldorf,
Germany

☎ +49 (0) 211 506 6670
📠 +49 (0) 211 506 66799
✉ info@optoma.de

Scandinavia

Lerpeveien 25
3040 Drammen
Norway

☎ +47 32 98 89 90
📠 +47 32 98 89 99
✉ info@optoma.no

PO.BOX 9515
3038 Drammen
Norway

Korea

WOOMI TECH.CO.,LTD.
4F,Minu Bldg.33-14, Kangnam-Ku,
seoul,135-815, KOREA

☎ +82+2+34430004
📠 +82+2+34430005

Japan

東京都足立区綾瀬3-25-18
株式会社オーエス
コンタクトセンター:0120-380-495

✉ info@os-worldwide.com
www.os-worldwide.com

Taiwan

12F., No.215,Sec. 3, Beixin Rd.,
Xindian Dist., New Taipei City 231,
Taiwan, R.O.C.
www.optoma.com.tw

☎ +886-2-8911-8600
📠 +886-2-8911-6550
✉ services@optoma.com.tw
asia.optoma.com

Hong Kong

Unit A, 27/F Dragon Centre,
79 Wing Hong Street,
Cheung Sha Wan,
Kowloon, Hong Kong

☎ +852-2396-8968
📠 +852-2370-1222
www.optoma.com.hk

China

5F, No. 1205, Kaixuan Rd.,
Changning District
Shanghai, 200052, China

☎ +86-21-62947376
📠 +86-21-62947375
www.optoma.com.cn

