



Transform your living room into an incredible home cinema with the 3,000 lumens, ultra short throw Optoma CinemaX P2 Smart 4K UHD all-in-one home entertainment system. The laser light source, auto focus, high-performance glass lens and SmartFIT image alignment system ensure hassle-free setup that easily produces stunning 120-inch projection with rich HDR color.

Premium sound is provided by the integrated Dolby Digital 2.0 soundbar with two full range speakers, two woofers, ported chambers and 40-watts of power, delivering crisp details with superior dialogue clarity. Smart+ technology enable Amazon Alexa, Google Assistant and IFTTT support for easy integration into your smart home while the Android OS with smart TV apps and Optoma Marketplace deliver USB media playback compatibility, Internet streaming services and downloadable apps.



Bright 3,000 lumens laser light source with 2,000,000:1 contrast ratio



RGBRGB Color Wheel for Rich Cinematic Color and Stunning HDR



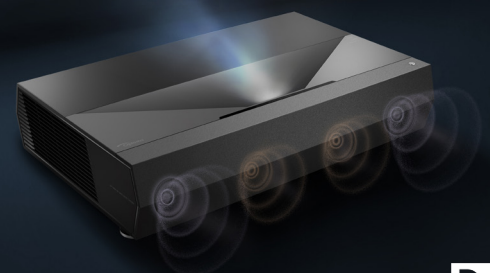
Dolby Digital and Dolby Digital Plus passthrough via HDMI ARC or S/PDIF

### TapCast

Use your mobile device with the TapCast companion app to easily cast images, documents and screen share from supported devices.



### Premium Dolby Digital 2.0 soundbar



- 2x full range aluminum drivers, 2x woofers
- Ported and isolated chambers
- 40 watts of total power



### Ultra Short Throw

Easy place and play setup.



### SmartFIT<sup>†</sup>

Image alignment system ensures hassle free setup using a smartphone.



## OPTICAL/TECHNICAL SPECIFICATIONS

<b>Display Technology</b>	Texas Instruments™ 0.47" 4K UHD ECD DMD
<b>Color Wheel</b>	6 segment RGBRGB
<b>Native Resolution</b>	4K UHD (3840 x 2160)
<b>Maximum Input Resolution</b>	4K (4096 x 2160, 30Hz) 4K UHD (3840 x 2160, 60Hz)
<b>Brightness</b>	3,000 ANSI lumens
<b>Contrast Ratio</b>	2,000,000:1 (Dynamic Black enabled)
<b>Color Gamut Support</b>	REC.709, DCI-P3, REC.2020
<b>HDR (High Dynamic Range)</b>	HDR10 compatible (REC.2020) Picture Modes: Normal, Bright, Detail, Film HDR SIM (simulate HDR effect with non-HDR content)
<b>Video Processing</b>	Upscales WXGA, 720p, 1080p, WUXGA, 1440p up to 4K UHD (3840 x 2160, 60Hz), PureMotion technology
<b>Input Response</b>	67.6ms (4K UHD, 60 Hz) / 67.1ms (1080p, 60Hz) SmartFIT and PureMotion must be disabled for PC and console gaming.
<b>Color Depth</b>	3840 x 2160, 30Hz YUV 4:4:4 / 4:2:2 / 4:2:0 (8/10 / 12 bit), 3840 x 2160, 60Hz YUV 4:4:4 / YUV 4:2:2 (8bit), YUV 4:2:0 (8 / 10 / 12bit)
<b>Displayable Colors</b>	1.07 billion
<b>Light Source Life†</b>	Up to 30,000 hrs (Eco), 20,000 hrs (Normal) Supports 24/7/365 operation†
<b>Light Source Type†</b>	Laser
<b>Projection Method</b>	Table top
<b>Keystone Correction</b>	+5/-10 vertical, ±5° horizontal
<b>Geometry</b>	SmartFIT companion app (Android and iOS) with auto image alignment system
<b>Uniformity</b>	90%
<b>Offset</b>	124% +6%/-2.5%
<b>Aspect Ratio</b>	16:9 (native), 4:3, auto compatible
<b>Throw Ratio</b>	0.25:1
<b>Projection Distance</b>	8" - 16.5" (back of projector to projection surface)
<b>Image Size</b>	85" - 120"
<b>Digital Zoom</b>	0.8 - 2.0x
<b>Audio</b>	Premium Dolby Digital 2.0 soundbar (40W, 2 full range drivers, 2 woofers with ported chambers). 4 Sound Effects (Movie, Music, Sport, Game, Night)
<b>Noise Level</b>	24dB
<b>Remote Control</b>	Bluetooth smart home remote and air mouse
<b>Operating Temperature</b>	41-104°F (5-40°C), 85% max humidity
<b>Power Supply</b>	AC input 100-240V, 50-60Hz, auto-switching
<b>Power Consumption</b>	Bright: 410W max, 360W typical Eco: 255W max, 225W typical
<b>High Altitude</b>	Operating temperature at sea level up to 10,000 feet = 104° F (max); Must manually switch to high altitude mode from 5,000 feet and above (using OSD menu) to maintain optimal functionality.

## COMPATIBILITY SPECIFICATIONS

<b>USB Media Player Compatibility</b>	Videos: 480p, 720p, 1080p, 1440p, 4K UHD, HDR10, HLG Files: MKV, MP4, M4V, AVI, H.264, HEVC, MOV, TS Audio: MP3, AAC, WAV, FLAC 16/24-bit Images: JPEG, BMP, GIF
<b>Computer Compatibility</b>	VGA, SVGA, HDTV(720P), WXGA, WXGA+, SXGA, SXGA+, UXGA, HDTV(1080p), WUXGA, 4K UHD (24/30/50/60Hz), 4K DCI
<b>Video Input Compatibility</b>	PAL, SECAM, 576i/p, NTSC, 480i/p, HDTV 720p/1080i/1080p, 4K UHD (24/30/50/60Hz)
<b>3D Compatibility<sup>§</sup></b>	Supports all HDMI 1.4a mandatory 3D formats (Frame pack, side-by-side, top-bottom) and up converts frame rate from 60Hz to 120Hz or 24Hz to 144Hz (i.e. 60 or 72 frames per eye). 3D glasses are needed and sold separately. Refer to user manual for details.
<b>Vertical Scan Rate</b>	50 - 85 Hz (120 Hz for 1080p 3D feature)
<b>Horizontal Scan Rate</b>	15.375 - 91.146 KHz
<b>User Controls</b>	Graphic user interface and on-screen menu in 27 languages
<b>I/O Connection Ports</b>	2x HDMI 2.0 (HDCP 2.2, 18Gbps) (HDMI CEC & ARC compatible), 1x HDMI 1.4a (HDCP 1.4) (side), 2x USB 2.0 (rear, for 4K USB media player), USB power (service), Bluetooth audio (input and output)
<b>Control</b>	HDMI-CEC, Smart+ (Amazon Alexa, Google Actions, IFTTT compatible)



1. USB (media player)
2. HDMI 2.0 (ARC)
3. HDMI 2.0
4. Optical S/PDIF
5. RJ-45 (LAN)
6. Audio out
7. USB (service)
8. USB (power)
9. HDMI 1.4a
10. Kensington Lock
11. AC Power
12. Bluetooth remote

## SMART FEATURES

<b>Operating System</b>	Android 8.0 with customizable launcher
<b>Video streaming</b>	Available Optoma Marketplace with access to YouTube 4K, Netflix (480p), CNBC, TED TV, NBA TV, CNBC, BBC & more
<b>USB Image &amp; Document Viewer</b>	Office documents (Word, Excel & PowerPoint), PDFs and images Autoplay PDF/PPT: 3, 5, 10, 15 & 20s intervals
<b>Smart Home Features</b>	Amazon Alexa, Google Assistant & IFTTT
<b>SmartFIT</b>	iOS (App Store) & Android (Play Store & Amazon Appstore)
<b>Amazon Alexa Smart Home Skill</b>	<b>Commands:</b> power on/off, volume control (1-10), change input source, media player controls (play, stop, pause, next, previous, FF, REW, start over)
<b>Amazon Alexa Custom Skill</b>	<b>Commands:</b> change display mode, HDR picture mode, PureMotion setting
<b>Alexa AV Gear Region Support</b>	United States - English, Canada
<b>Google Assistant Actions</b>	<b>Commands:</b> power on/off, volume control (1-10), change input source, media player controls (play, stop, pause, next, previous, FF, REW, start over), change display mode, HDR picture mode, PureMotion setting
<b>Google Assistant Region Support</b>	All regions - English only

## NETWORK CONNECTIVITY

<b>Wi-Fi</b>	802.11ac (dual-band, 2x2)
<b>Wi-Fi security</b>	WEP, TKIP, AES, WPA, WPA2
<b>Bluetooth</b>	Bluetooth 4.0, BT Audio output & input
<b>Firmware</b>	OTA updates via Wi-Fi or ethernet

## PHYSICAL SPECIFICATIONS

<b>Security</b>	Kensington® lock port, password (OSD)
<b>Weight</b>	24.25 lbs
<b>Dimensions (W x H x D)</b>	22.1" x 5.1" x 15"
<b>Recommended furniture height</b>	13" - 18" (124% offset)

### Warranty

2 Year parts and labor limited warranty on the projector, 5-year or 12,000 hour light source warranty (whichever comes first)

### What's in the Box

CinemaX P2-B projector, distance cards, quick start user manual, Bluetooth smart home remote with Airmouse (rechargeable), power cable

### Accessories

Bluetooth smart home remote with Airmouse (replacement): BR-3074R  
CinemaX P2 distance cards (replacement): BD-25120

UPC 79643581 396 3

\*TV Tuner not included. Purchase of separate TV Tuner and Antenna are required to watch free over-the-air local channels.

†Light source life is dependent upon many factors, including brightness mode, display mode, usage, environmental conditions and more. Light source brightness can decrease over time.

‡There must be sufficient space of 19" around all sides of the projector (see user manual page 11). In addition, High-Altitude Mode is required above 5000 feet (enable in OSD). Failure to comply will invalidate the warranty.

§3D content can be viewed with DLP Link active shutter 3D glasses when projector is used with a compatible 3D player.

Copyright © 2021 Optoma Technology, Inc. DLP® and the DLP logo are registered trademarks of Texas Instruments™. Amazon, Alexa and all related logos are trademarks of Amazon.com, Inc. or its affiliates. Assistant is a trademark of Google, LLC. Dolby, Dolby Audio, and the double-D symbol are trademarks of Dolby Laboratories. All other trademarks are the property of their respective owners. All specifications subject to change at any time. 09302021