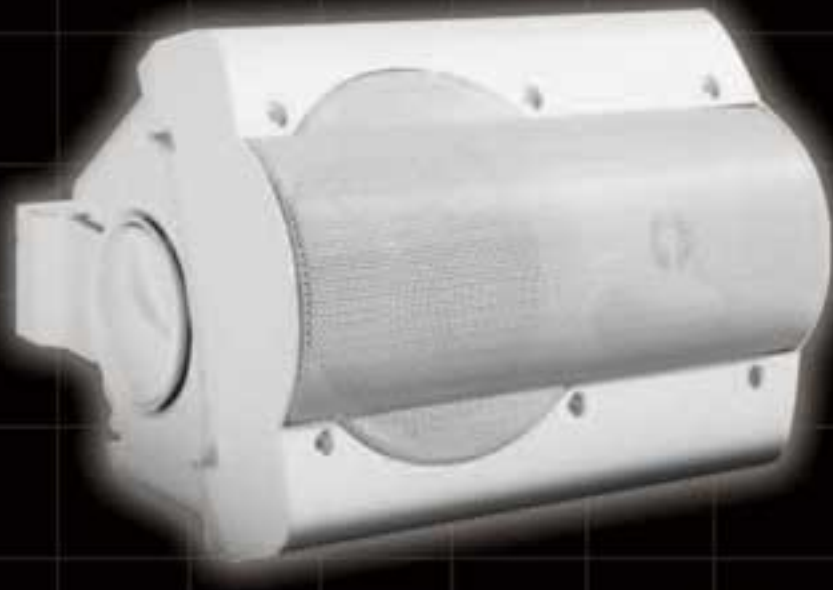


# P6278P

## PATIO BLASTER P SERIES SPEAKERS



### P6278P

- 70 Volts & 8 ohms
- 6 1/2", 2-Way, Ported
- 45 Watts RMS Maximum Power
- 3.5, 7.5, 15, 30 Watts
- Outdoor/Indoor
- Weatherized Aluminum Grill and Bracket
- Black and White Colors Available
- "U" Mount Bracket Included
- Ceiling or Wall Mount Possibilities
- 5", 8" Available



# P6278P

ARCHITECTS AND ENGINEERS  
SPECIFICATIONS/TECHNICAL DATA

## PATIO BLASTER P SERIES



P8378: 8"



P6278: 6"



P5278: 5"

### GENERAL SPECIFICATIONS:

MODEL NUMBER:	P6278P
DESCRIPTION:	6 1/2", 2-Way, ported
OUTDOOR:	YES
IMPEDANCE:	70 Volts & 8 Ohms
DISPERSION:	92°
SENSITIVITY (1W/1M):	86 dB +/- 3dB
MAX POWER:	45 Watts
NOMINAL POWER:	3.5, 7.5, 15, 30 Watts
FREQUENCY RESPONSE:	65 Hz - 20 kHz
CROSS OVER:	3.5 kHz
HIGH FREQUENCY DRIVER:	2", Dome
LOW FREQUENCY DRIVER:	6 1/2", Polypropylene/Rubber
WOOFER SIZE:	6 1/2"
WOOFER MATERIAL:	Polypropylene/Rubber
TWEETER/S:	1 Each
TWEETER SIZE:	2"
TWEETER MATERIAL:	PEI
GRILL MATERIAL:	Aluminum
ENCLOSURE:	Plastic
DIMENSIONS: (LxWxH/inches):	9 1/2" x 8 1/2" x 11 2/8"
WEIGHT (pounds):	9.3 lbs.
COLOR/S:	Black, White
PAINTABLE:	YES

### ACCESSORIES:

• SS-36	In Ground Stainless Steel Stake (36")
• OWI1070M	Attenuator, Mono, 70V, 10W Max
• OWI3570M	Attenuator, Mono, 70V, 35W Max
• OWI7570M	Attenuator, Mono, 70V, 75W Max
• OWI2570S	Attenuator, Stereo, 70V, 25W Max



ESTABLISHED 1978

# Touchboards

205 Westwood Ave, Long Branch, NJ 07740  
Phone: 866-94 BOARDS (26273) / (732)-222-1511  
Fax: (732)-222-7088 | E-mail: sales@touchboards.com