

NEC



Professional Installation Projectors

PH Series

4K UHD

NP-PH2601QL | NP-PH3501QL



Powerful 3-chip 1.38" DLP installation projectors with the latest RB laser light source supports new, demanding projection

Laser Light Module

- 20,000-plus hours of virtually maintenance-free operation
- High-brightness, lower power consumption enhances applications such as retail, digital signage and theme parks
- Ability to control brightness creating a stable image over longer time periods

Integrated and Powerful

- Project uncompressed FHD video with integrated HDBaseT
- High performance video processing/scaling creates life-like images
- Integrated software applications such as DisplayNote®, Crestron Roomview, AMX Beacon and PJ Link allow for complete interactivity and control

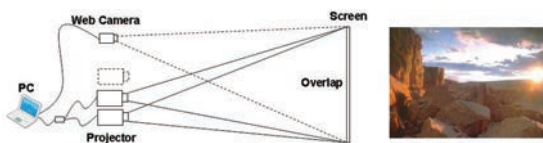
Flexible

- Enjoy greater installation flexibility with powered optional bayonet style lenses providing quick and easy exchanges. Lens throw distances range from 7.3 to 823.8 ft
- Tilt-free installation capabilities make these projector ideal for almost any install environment, including portrait orientation
- +/- 0.5% vertical lens shift and +/- 0.17% horizontal lens shift capabilities make alignment easy



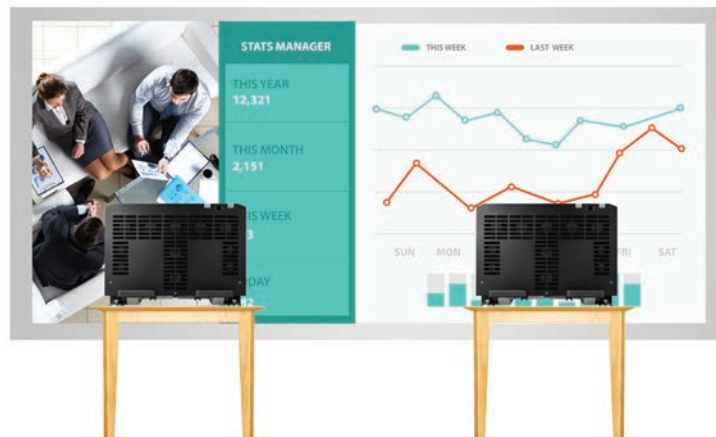
Stacking correction

The industry's first built-in stacking correction capabilities (up to two projectors) allows the projectors to boost an image's brightness up to 80,000 lumens, which is ideal for larger-sized screens and environments with heavy ambient light. This feature also prevents the complete loss of an image, which can happen when using only one projector.



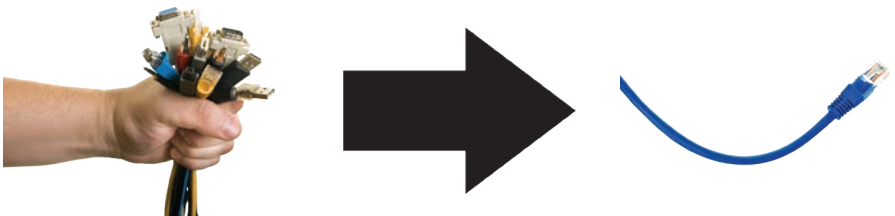
Edge blending

This function seamlessly blends multiple projected images to display a single high-resolution image.



Built-In HDBaseT Support

Simplify your installations with HDBaseT. Optimized for video applications and supporting uncompressed full HD digital video, audio, ethernet, power and various control signals. With only a single cable (up to 100m) to run, infrastructure and labor costs are reduced, installations are significantly easier, and there is no cable clutter to manage. With uncompressed HD video support, images have never been more stunning. What's more, control signals are contained in the same cable.

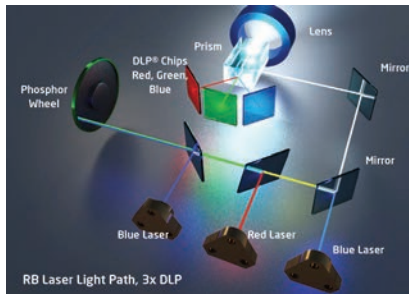


GET CONNECTED WITH A WIDE SELECTION OF INPUTS

- **Dual computer inputs** ensure quick switching between presentations

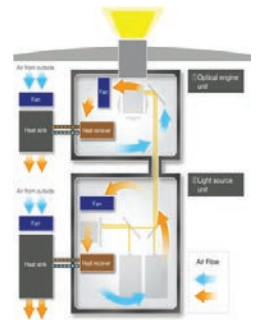
Laser Light Module

- 20,000-plus hours of virtually maintenance-free operation
- High-brightness, lower power consumption enhances applications such as retail, digital signage and theme parks
- Ability to control brightness creating a stable image over longer time periods
- Images appear immediately after power on due to instantaneous start up of the laser



Super Dust Protection

NEC's patented heat exchanger and the completely sealed optical engine offer continuously best performance in harsh Rental/Staging environment.



ADVANCED SOFTWARE FEATURES

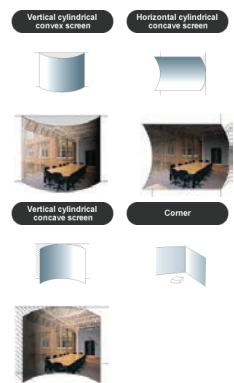
Cornerstone

Enhanced keystone correction allows for horizontal, vertical and diagonal image correction for aligned images even when the projector is set up at an angle to the screen.



Geometric Correction

Projecting an image isn't confined to a standard flat screen or wall with the NEC PH Series. Geometric correction allows these models to project an image on spheres, cylinders, corner angles and many more non-standard surfaces.



UNIQUE FEATURES

3D Reform™ allows you to square the image by adjusting horizontally, vertically or diagonally when the projector cannot be placed parallel or perpendicular to the screen

Advanced AccuBlend™ ensures detailed images when non-native resolution sources are connected to the projector

AutoSense™ automatically syncs with any computer signal and features one-touch image optimization

64-step image magnification with location control

Discreet source keys for source selection

Remote diagnostics enable the user to monitor and make adjustments to the projector remotely

Built-in HTTP page for control and monitoring over a LAN network. Email notification of error messages or lamp end-of-life can be sent to remote locations.

WARRANTY

Registered owners receive a five (5) years or 20,000 hours (whichever comes first) parts and labor warranty

IN THE BOX

Remote control, batteries, power cord, user's manual on CD-ROM, quick start guide, Lens Hole Cap, warranty Sheet, Security Sticker, Service Door Key

ACCESSORIES

- RMT-PJ35 Replacement remote control
- NP01PW1 Power cable
- RGBCBL-PJPX RGB cable
- Optional Lenses L2K-10F1, L4K-11ZM, L4K-15ZM, L4K-20ZM, L2K-30ZM, L2K-43ZM1, L2K-55ZM1
- SB-01HC HD/SS-SDI input card
- SB-04HC 3G/HD/SD-SDI input Card
- XPAND X105-RF-1 3D Glasses
- XPAND AD025-RF-X1 RF Emitter

ORDERING MODEL NUMBERS

- NP-PH2601QL
- NP-PH3501QL



		PH2601QL	PH3501QL	
Display Technology		1.38" DC4K DMD chip		
Light Output (lumens)		30,000 Center Lumens, 26,000 ANSI	40,000 Center lumens, 35,000 ANSI	
Resolution	Native	4K 4096 x 2160		
	Maximum	4K 4096 x 2160		
Contrast Ratio (up to)		30,000:1 with Dynamic Contrast		
Laser Life (up to)		20,000 hours		
Screen Size (diagonal)		50 to 500 in. / 1.27 to 12.7m		
Throw Ratio	L2K-10F1	0.93		
	L4K-11ZM	1.24 - 1.73		
	L4K-15ZM	1.52 - 2.10		
	L4K-20ZM	1.98 - 3.34		
	L2K-30ZM	2.71 - 3.92		
	L2K-43ZM1	3.91 - 5.52		
L2K-55ZM1		5.00 - 7.80		
Projection Distance		2.5 to 68.5 ft. / 0.74 to 20.9m		
Projection Angle		10.3 to 10.8° tele / 13.7 to 14.5° wide		
Lens	Zoom	Powered		
		Zoom Ratio	L2K-10F1	Fixed
			L4K-11ZM	1.4:1
			L4K-15ZM	1.4:1
			L4K-20ZM	1.7:1
			L2K-30ZM	1.4:1
	L2K-43ZM1		1.4:1	
	L2K-55ZM1	1.6:1		
	Focus	Powered		
		L2K-10F1	F=2.5, f= 28.95mm, 15.0lbs. / 6.8kg	
		L4K-11ZM	Power zoom / Power focus, F=2.5, f= 38.5 to 53.7mm, 19.0lbs. / 8.6kg	
		L4K-15ZM	Power zoom / Power focus, F=2.5, f= 47.5 to 65.6mm, 17.0lbs. / 7.7kg	
		L4K-20ZM	Power zoom / Power focus, F=2.5, f= 61.4 to 105.2mm, 19.6lbs. / 8.9kg	
		L2K-30ZM	Power zoom / Power focus, F=2.5, f= 85.0 to 121.6mm, 15.4lbs. / 7.0kg	
		L2K-43ZM1	Power zoom / Power focus, F=2.5, f= 122.8 to 172.3mm, 15.7lbs. / 7.1kg	
L2K-55ZM1		Power zoom / Power focus, F=2.5, f= 156.5 to 243.1mm, 16.8lbs. / 7.6kg		
Shift		L2K-10F1	Powered +/-0.27 Vertical, +/-0.08 Horizontal	
	L2K-30ZM			
	L2K-43ZM1			
	L4K-11ZM			
	L4K-15ZM	Powered +/-0.17 Vertical, +/-0.50 Horizontal		
	L4K-20ZM			
L2K-55ZM1	Powered +/-0.31 Vertical, +/-0.10 Horizontal			
Shutter		Laser Shutter		
Keystone Correction		+/- 40° horizontal, +/- 40° vertical		
Synchronization Range	Horizontal	Analog: 15-100kHz, Digital: 24-153kHz		
	Vertical	Analog: 48-120Hz, Digital: 24-120Hz		
	Refresh Rate for 4K Signal	23.98, 34.25, 29.97, 30.50, 59.94, 60Hz		
Supported Video Standards		NTSC, NTSC4.43, PAL, PAL-60, PAL-M, PAL-N, SECAM		
SD/HD Video Signal Compatibility		4K, 1080p, 1080i, 720p, 576p, 576i, 480p, 480i		
PC Signal Compatibility		VGA, SVGA, XGA, SXGA, SXGA+, UXGA, WUXGA		
Macintosh Compatibility		Yes		
Input Terminals	RGB1 (digital)	HDMI (V2.0) w/HDCP (V1.4/2.2) - 4096 x 2160 @ 60p, 12 bit 4:4:4		
	RGB2 (digital)	HDMI (V2.0) w/HDCP (V1.4/2.2) - 4096 x 2160 @ 60p, 12 bit 4:4:4		
	RGB3 (digital)	DisplayPort w/HDCP (V1.4) - 4096 x 2160 @ 60p, 12 bit 4:4:4		
	RGB4 (digital)	DisplayPort w/HDCP (V1.4) - 4096 x 2160 @ 60p, 12 bit 4:4:4		
	RGB5 (digital)	HDBaseT w/HDCP (V1.4/2.2) - 4096 x 2160 @ 60p, 8 bit 4:2:0		
	RGB6 (digital)	Quad 3G-SDI		
	Option Slot	OPS		
	Output Terminals	3D Sync Line		
External Control		RS-232, IR, HDBaseT, DDC/CI, RJ-45, USB (USB 2.0), Stereo Mini		
Sync Compatibility		Separate Sync / Composite Sync / Sync on G		
Power Requirements		220 - 240V AC, 50/60Hz Single Phase		
Input Current		30A		
Power Consumption (ECO off/Standby)		3665W / 205W	4705W / 205W	
Installation Orientation		Floor/Front, Floor/Rear, Ceiling/Front, Ceiling/Rear		
Dimensions (WxDxH)		27.4 x 46.5 x 17.9 in. / 697 x 1180 x 455mm		
Net Weight		317.6 lbs. / 144 kg	372.6lbs. / 169 kg	
Fan Noise		55dB		
Regulations				
U.S.		UL60950-1 (2nd)/ FCC Part15 Class A (Marking: UL)		
Canada		CSA60950-1 / ICES-003 Class A (Marking: CAN ICES-38(A)/NMB-38(A))		
Latin America		EN60950-1/EN55022 Class A, EN55032 Class A, EN55024, EN61000-3-2/3-3/3-11/3-12 (Marking CE)		
Laser Safety	USA	IEC60825-1 Edition3 2014 : Class1, IEC62471 2006 : RG3, FDA(21 CFR 1040.10 and 1040.11)		
	Others	IEC60825-1 Edition3 2014 : Class1, IEC62471 2006 : RG3		
Operating Temperature		41° - 104°F / 5° - 40°C		
Humidity		20-80% non-condensing		
Storage		14° - 122°F / -10° - 50°C		

* Lens does not ship with the projector. Additional accessories are available, including screens, carts, mount accessories and replacement cables. Visit www.necdisplay.com for details.

HDMI, the HDMI Logo and High-Definition Multimedia Interface are trademarks or registered trademarks of HDMI Licensing LLC. All other brand or product names are trademarks or registered trademarks of their respective holders. Product specifications subject to change.