

PLUS

CleanBoard

Instruction Manual

Wall Mount

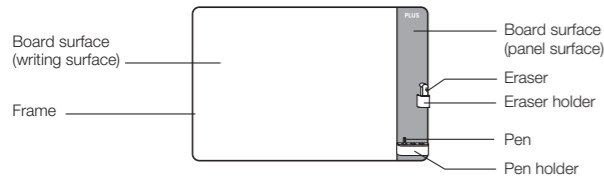
Before using the board, read this manual carefully. Keep the manual in a safe place for future use.

What is CleanBoard?

"CleanBoard" is a new type of writing board that does not produce marker residue and stain. It utilizes magnetic sheet and does not require dry erase marker. The CleanBoard does not use ink. No replacement markers to stock. No ink to stain your hands, clothes and office. No worries of dried-up marker, just start writing.

* Use only CleanBoard Stylus Pen and Eraser which are expressly developed for the CleanBoard.

Names of parts



1. Safety Warning

WARNING

- The pen and the eraser contains magnets. Refrain from using this board if you use medical device such as pacemaker, ICD, etc. that can be affected with magnet. Data in a magnetic medium such as magnetic card may also be damaged if the pen or eraser is placed close to it. Do not place the eraser near watches and mobile phones etc. as it may interfere with their normal operations or cause malfunction.
- Dispose of the product properly as burning the board may generate toxic gases.

Caution

- Follow assembly instructions in the manual. Incorrect assembly or installation may result in breakage or injury.
- Be extra careful when taking the installed board off the wall. Mounting bracket may come off from the screw and result in damage of the part or injury.
- If any abnormality is found on the product, stop using it immediately. Continued use could result in breakage or injury.
- Do not modify or disassemble the CleanBoard as it could result in breakage or injury.

2. Cautions on Writing Surface

- Only use CleanBoard Stylus Pen and Eraser expressly produced for the CleanBoard.
- The CleanBoard has a very thin resin cover. Keep the board surface free from scratches.
- Excessive pressure of the pen tip can damage the CleanBoard surface. Run the pen smoothly over the board surface without excessive pressure.
- Avoid high impact, piercing, beating or pressing against the board with sharp items (pen tip, knife). It can result in surface damage.
- The contents leak out if the CleanBoard is punctured. If the contents come in contact with your body, eyes and mouth, rinse thoroughly with water. Consult with a physician, should problem develop.
- Because of the characteristic of the magnetic sheet of the CleanBoard, sometimes uneven erasure may result.
- Do not place the CleanBoard near a heater, window where sun light can hit directly, or leave the board outside. The CleanBoard may deform.

3. Cautions

- Exposing the board to dust and high humidity may result in discoloration, deformation and corrosion of the board.
- Pay attention not to spill water, drink, etc. onto the CleanBoard. If you spill liquid on it, wipe it off immediately to avoid discoloration or deformation.
- Do not put any items other than dedicated CleanBoard Stylus Pen and Eraser into the pen and eraser holders as holders may fall off resulting in damage or injury.
- Do not use the product outdoors or in a place where water may splash onto it. Doing so could result in rusting or breakage.
- Do not scratch the writing surface of the CleanBoard with thumbtacks, nails, ballpoint pens or metal objects, as doing so could cause irreparable damage.
- Avoid using tape, adhesive, etc. on the writing surface of the CleanBoard.
- Do not drop or hit with a hard object onto the surface or frame of the CleanBoard as it may cause damage.
- Install the CleanBoard flush with the wall. Uneven installation and continued usage may result in deformation of the board, breakage and injury.
- Rough handling or other than intended use may lead to malfunction, breakage and accidents.
- Do not leave writing on the CleanBoard for an extended period. It may be difficult to erase writing cleanly.
- Do not place magnetic objects (magnet, Notebook PC, smartphone, etc.) near the CleanBoard surface as it may darken the area making the contents illegible.
- When a third party uses the CleanBoard, make sure they understand what these instructions describe.

4. How to use

Before Using the Board

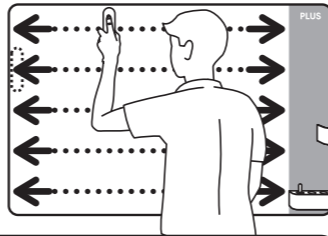
● Preparing the Board for the Best Working Conditions

Before using the board for the first time or after a long while, carry out board surface preparation.

Gradually glide the eraser horizontally over the board surface for two or three times. This will normalize writing and erasing performance of the board.

Gently place the eraser on the surface and slide it slowly in a back and forth motion.

Press the eraser lightly against the writing surface and move it back and forth slowly (2 or 3 times)



Caution on the Electric Eraser

- Try not to move the eraser fast.
- Gently press the eraser too hard against the board surface.

How to Use the Stylus Pen

● How to Use the Stylus Pen

- Maintain contact of stylus tip against the board surface when writing.

● How to Use Pen Cap Eraser for a Specific Small Area

Slide the cap end over the surface and you can erase the writing in a narrow area such as single letter.



WARNING

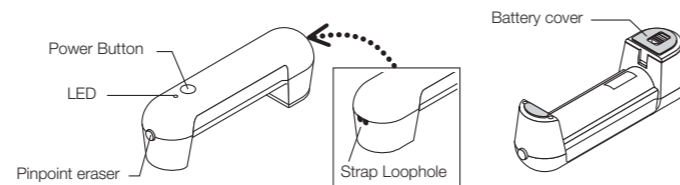
- The pen contains magnets. Refrain from using this board if you use a medical device such as pacemaker, ICD, etc. Keep the stylus pen including its cap away from magnetic medium as it can damage data on it. Do not place the pen (including the cap) near watches and mobile phones etc. as it may cause them to malfunction.

Cautions on the Stylus Pen

- The stylus pen is dedicated for use with the CleanBoard.
- Take the cap off to use and replace it when done.
- Use the pen holder on the CleanBoard to store the pen.
- Do not pull on the disc at the pen tip or it can be damaged and makes it not suitable to write.
- Erasing with pen cap eraser may leave faint grey spot.

How to Use the Electric Eraser

[Name of the Parts]



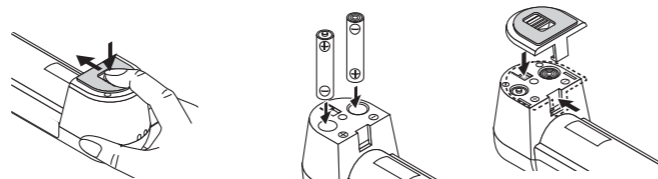
Battery Type: AAA alkaline battery x 2 pieces

The electric eraser comes with two AAA alkaline batteries as for Batteries are included. Check operation.

[Preparations before use]

Battery Installation/Replacement

- Push your finger in the direction of the arrow mark to slide the battery cover off.
- Insert the AAA alkaline batteries as shown in the figure. * Insert the batteries with the positive (+) and negative (-) poles in the correct direction.
- Attach the battery cover after inserting the batteries.

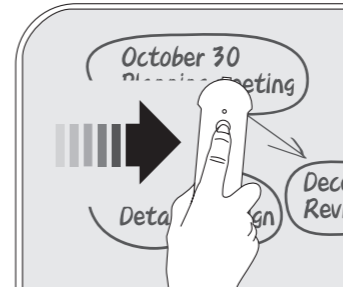


CAUTION : The proper handling of Alkaline batteries

- Be sure to use AAA alkaline batteries. The product may not work properly if non-alkaline batteries are used.
- Do not use different types of used and new or different brands of batteries together. The use of a mixture of different types or brands of battery, or of used and new batteries even of the same brand or type, may result in heat generation, leakage, explosion, or fire.
- Do not open or close the battery cover or insert or take out the batteries when the main unit or your hand is wet. Doing so may cause a malfunction.
- Do not use batteries that are damaged or those whose cover have peeled off.
- Do not recharge Alkaline batteries.
- Dispose of used batteries in accordance with the regulations and laws of the area you live in.

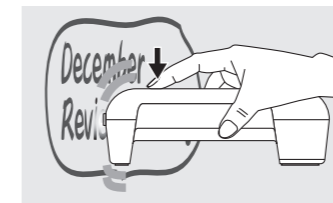
[How to use the electric eraser]

- Press the eraser lightly against the writing surface and move it slowly so that it slides while pressing the power button of the eraser body.
- After you finished erasing, release the eraser from the writing surface of the CleanBoard and release your finger from the power button. Keep the eraser in the eraser holder.



[How to use the electric eraser for pinpoint erasing]

You can erase a narrow area such as a single character by holding down the power switch button and sliding the tip of the pinpoint eraser on the writing surface.



Precautions when using an electric eraser

- After you finish erasing, store the eraser in the eraser holder of the CleanBoard main unit.
- Do not move the eraser quickly.
- Do not press the eraser hard against the writing surface.
- Do not peel off the (gray) felt material pasted to the base of the main unit.
- Do not disassemble, modify or repair. This may result in injuries or malfunctions.

● To Use the Electric Eraser Safely

This device complies with Part 15 of the FCC Rules.

Operation is subject to the following two conditions:

- This device may not cause harmful interference, and
- This device must accept any interference received, including interference that may cause undesired operation.

WARNING

- The eraser contains magnet. Refrain from using this board if you use a medical device such as pacemaker, ICD, etc. Keep the eraser away from magnetic medium as it can damage data on it. Do not place the eraser near watches and mobile phones etc. as it may cause them to malfunction.
- If foreign objects such as water or metal chips were to enter the product, stop using immediately and remove the batteries. Continued use may result in injuries or a malfunction, fire or electric shock.
- If the product gets hot, or if smoke or odors appear, stop using the product immediately and remove the batteries. Subsequently, contact your dealer. Continued use may result in injuries or a malfunction, fire or electric shock.
- Do not drop or hit the product. If it is damaged, stop using it immediately and remove the batteries. Failure to do so may result in injuries or a malfunction, fire or electric shock.
- Do not disassemble, repair or modify the eraser. This may result in injuries or cause a malfunction, fire or electric shock.
- If liquid leaking from the batteries gets into your eyes, or stains your skin or clothing, rinse the area immediately with plenty of water. Failure to do so may cause blindness or injury. Seek medical attention.
- Do not put the batteries into a fire. They may rupture and cause injury.
- Do not short circuit the batteries.

Caution

- Do not leave the product running with the power on or while pressing down the power button. This may cause liquid leakage, overheating, rupture, etc., resulting in damages to the main unit.
- Do not turn on the power switch when there are magnets and other metals around the eraser. The eraser may not work properly (motor does not move).
- Remove the batteries when the product is not going to be used for a long period of time. If not, this may result in a fire or malfunction.
- If the product gets wet, it may cause a fire or electric shock.
- Do not use hot water, alcohol, benzene, thinner, etc. on the product as it may cause a malfunction or damages.
- Do not place the product near heating appliances or windows that are exposed to direct sunlight, or leave it outdoors or in a car in direct sunlight.

[Troubleshooting]

Symptoms	Action
<ul style="list-style-type: none"> LED does not turn on even when the power switch is turned on Motor does not work even when the power switch is turned on 	<ul style="list-style-type: none"> Are the batteries depleted? Replace with new batteries. Have the positive and negative poles of the batteries been reversed? Insert the batteries correctly.
<ul style="list-style-type: none"> Motor does not work even though the power switch is turned on and the LED is lit 	<ul style="list-style-type: none"> Are there any magnets or metals around the eraser? Keep the eraser away from magnets and metals.

5. Cleaning

- Wipe with a dry and soft cloth.
- If the product is very dirty, wipe thoroughly with a damp cloth that has been wrung tightly, then use a soft cloth to finish wiping until it is dry.
- Do not use volatile or solvent-based chemicals etc. to clean.

Optional Accessories

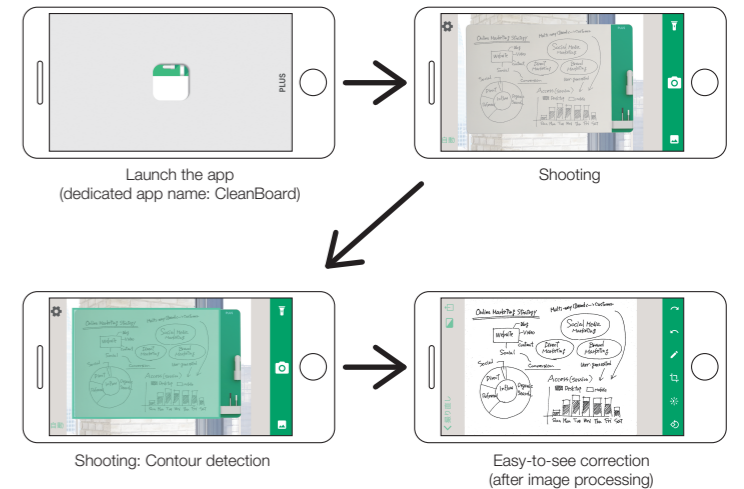
	Type	Serial number	Order code
CleanBoard Stylus Pen	Bold Tip (line width: Approx. 3 mm)	CLB-600PB	428-591
CleanBoard Eraser	Electric Eraser	CLB-500EE	428-593

Dedicated App for CleanBoard

Save the CleanBoard Data with a dedicated app for easy viewing

Using your smartphone, the free dedicated app detects the contour of the CleanBoard, captures the image and automatically corrects and saves the information for easy viewing later.

CleanBoard Search



PLUS

CleanBoard

Handling and Setup Instructions

Wall Mount

1. Assembly Instructions (assembly must be done by two persons or more)

- Follow this assembly and installation instructions to assemble and install the CleanBoard. Incorrect assembly can lead to injury.
- Before assembling, check that all the materials and parts required for assembly are present.
- A Phillips screwdriver is required.



List of Parts and Assembly Materials

① CleanBoard x 1	② Board Securing Upper Bracket x 2	③ Board Securing Lower Bracket x 2
④ Pen holder: 1 piece	⑤ Eraser holder: 1 piece	⑥ Electric eraser: 1 piece
⑦ AAA alkaline batteries: 2 pieces (included with electric eraser only)	⑧ Pen (Bold Tip) x 1	Instruction manual (front) / Assembly, installation manual (back): 1 sheet

Assembly procedure

1

Do not remove this cushioning material. (Type 1209 shown in the figure)

* ④ Attach to the side where the pen holder mounting hole is located (bottom). The PLUS logo should be on the upper side.

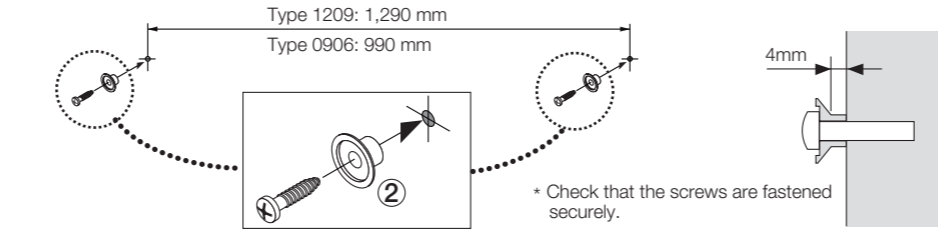
2

Caution The pen holder ④ and eraser holder ⑤ cannot be removed once they are installed.

Caution Push the holder fully into the board and make sure the hooks of the holder are clamping the board firmly. If not, the holders may fall off the board.

Installation procedure

Preparations:
Prepare a Phillips screwdriver and four securing screws with a nominal diameter of 4 to 5 that are suitable for the wall material (receiving screws are not included in the product).



Caution
The method of installation depends on the material of the wall. Read the section "Method of installation according to wall material" in these instructions carefully, select the receiving screws and method of installation suited to the wall, and install with sufficient force to support the weight of the whiteboard. Damage to the wall or the receiving screws is not covered by the warranty.

1

Start with the hole on the right side of the CleanBoard.

1-1

* Make sure it fits properly into the hole of the main unit.

1-2

Caution ③ Be careful not to drop the board securing lower brackets.

2

* Check that the screws are fastened securely.

3

2. Mounting method according to the material of the wall surface

- Check the wall material and strength so that two mounting screws can withstand a load of 150 N (15 kgf) or more.
- Use the table below to select a compatible plug and anchor type.
- Attach the selected plug and anchor according to the mounting method.

Material of mounting wall	How to install compatible plugs and anchors	Unit: mm																																	
Wooden wall	<p>Wooden screws</p> <p>(1) Screw in a screw with a size that matches the screw to be used.</p>																																		
Veneer plywood/ plasterboard/ gypsum board (GL method)	<p>Molly anchor (umbrella opens up to secure firmly)</p> <p>• Select based on the wall thickness</p> <table border="1"> <thead> <tr> <th>Designation</th> <th>Wall thickness</th> <th>Pilot hole diameter</th> </tr> </thead> <tbody> <tr><td>4-XS</td><td>1.6 - 5</td><td rowspan="4">8.0</td></tr> <tr><td>4-S</td><td>6 - 12</td></tr> <tr><td>4-SL</td><td>12 - 18</td></tr> <tr><td>4-L</td><td>18 - 22</td></tr> <tr><td>4-XL</td><td>32 - 38</td><td rowspan="2">10.0</td></tr> <tr><td>6-XS</td><td>1.6 - 5</td></tr> <tr><td>6-MS</td><td>1.6 - 9.5</td></tr> <tr><td>6-S</td><td>9 - 16</td></tr> <tr><td>6-L</td><td>14 - 32</td><td rowspan="4">12.0</td></tr> <tr><td>4-XL</td><td>35 - 45</td></tr> <tr><td>8-S</td><td>9 - 16</td></tr> <tr><td>8-L</td><td>14 - 32</td></tr> <tr><td>8-XL</td><td>35 - 45</td><td></td></tr> </tbody> </table> <p>[How to install]</p> <p>(1) Select a drill with a diameter that matches the screw to be used and drill a hole.</p> <p>(2) Insert the selected Molly anchor into the hole and tighten with a screwdriver.</p> <p>(3) Once the foot is opened and secured by fastening the screw, return the screw by 4 to 8 mm and hang the suspension tool.</p> <p>Toggle (Demonstrating its power on a wooden wall)</p> <p>• Can be mounted even if the hollow part is narrow just like the GL method.</p> <p>[How to install]</p> <p>(1) Fold the feet.</p> <p>(2) Insert something like a pin into the hole to open it inside the hollow wall.</p> <p>(3) Wooden screws or tapping screws with a diameter of 3.5 to 6 mm may be used.</p>	Designation	Wall thickness	Pilot hole diameter	4-XS	1.6 - 5	8.0	4-S	6 - 12	4-SL	12 - 18	4-L	18 - 22	4-XL	32 - 38	10.0	6-XS	1.6 - 5	6-MS	1.6 - 9.5	6-S	9 - 16	6-L	14 - 32	12.0	4-XL	35 - 45	8-S	9 - 16	8-L	14 - 32	8-XL	35 - 45		
Designation	Wall thickness	Pilot hole diameter																																	
4-XS	1.6 - 5	8.0																																	
4-S	6 - 12																																		
4-SL	12 - 18																																		
4-L	18 - 22																																		
4-XL	32 - 38	10.0																																	
6-XS	1.6 - 5																																		
6-MS	1.6 - 9.5																																		
6-S	9 - 16																																		
6-L	14 - 32	12.0																																	
4-XL	35 - 45																																		
8-S	9 - 16																																		
8-L	14 - 32																																		
8-XL	35 - 45																																		
Concrete wall	<p>U-plug (all OK if it is made of concrete)</p> <table border="1"> <thead> <tr> <th>Designation</th> <th>Plug length</th> <th>Pilot hole diameter</th> <th>Mounting screw ϕ</th> </tr> </thead> <tbody> <tr><td>U-5</td><td>25</td><td>5</td><td>2.6 - 4</td></tr> <tr><td>U-6</td><td>30</td><td>6</td><td>3.5 - 5</td></tr> <tr><td>U-8</td><td>40</td><td>8</td><td>4.5 - 6</td></tr> <tr><td>U-10</td><td>50</td><td>10</td><td>6 - 8</td></tr> <tr><td>U-12</td><td>60</td><td>12</td><td>8 - 10</td></tr> </tbody> </table> <p>[How to install]</p> <p>(1) Drill a pilot hole in the wall with a drill.</p> <p>(2) Insert the U-plug with the screw set.</p> <p>(3) Tighten with a screwdriver to complete.</p>	Designation	Plug length	Pilot hole diameter	Mounting screw ϕ	U-5	25	5	2.6 - 4	U-6	30	6	3.5 - 5	U-8	40	8	4.5 - 6	U-10	50	10	6 - 8	U-12	60	12	8 - 10										
Designation	Plug length	Pilot hole diameter	Mounting screw ϕ																																
U-5	25	5	2.6 - 4																																
U-6	30	6	3.5 - 5																																
U-8	40	8	4.5 - 6																																
U-10	50	10	6 - 8																																
U-12	60	12	8 - 10																																
Brick/ Block, Tile/ Marble/ Stone	<p>Cross-head tapping screw (pan head)</p> <p>Check that the inside of the wall such as the partition joints are reinforced before drilling a hole and screwing in the tapping screw. The screw head should protrude out by 4 to 8 mm then for the suspension tool to be hung.</p> <table border="1"> <thead> <tr> <th>A x B dimensions</th> <th>Pilot hole diameter</th> <th>A x B dimensions</th> <th>Pilot hole diameter</th> </tr> </thead> <tbody> <tr><td>4 x 16</td><td rowspan="5">3.2</td><td>5 x 20</td><td rowspan="5">4.2</td></tr> <tr><td>4 x 20</td></tr> <tr><td>4 x 25</td></tr> <tr><td>4 x 30</td></tr> <tr><td>4 x 35</td></tr> <tr><td>4 x 40</td><td></td><td>5 x 50</td><td></td></tr> <tr><td>4 x 50</td><td></td><td></td><td></td></tr> </tbody> </table>	A x B dimensions	Pilot hole diameter	A x B dimensions	Pilot hole diameter	4 x 16	3.2	5 x 20	4.2	4 x 20	4 x 25	4 x 30	4 x 35	4 x 40		5 x 50		4 x 50																	
A x B dimensions	Pilot hole diameter	A x B dimensions	Pilot hole diameter																																
4 x 16	3.2	5 x 20	4.2																																
4 x 20																																			
4 x 25																																			
4 x 30																																			
4 x 35																																			
4 x 40		5 x 50																																	
4 x 50																																			
Steel wall (Partition, etc.)	<p>Cross-head tapping screw (pan head)</p> <p>Check that the inside of the wall such as the partition joints are reinforced before drilling a hole and screwing in the tapping screw. The screw head should protrude out by 4 to 8 mm then for the suspension tool to be hung.</p> <table border="1"> <thead> <tr> <th>A x B dimensions</th> <th>Pilot hole diameter</th> <th>A x B dimensions</th> <th>Pilot hole diameter</th> </tr> </thead> <tbody> <tr><td>4 x 16</td><td rowspan="5">3.2</td><td>5 x 20</td><td rowspan="5">4.2</td></tr> <tr><td>4 x 20</td></tr> <tr><td>4 x 25</td></tr> <tr><td>4 x 30</td></tr> <tr><td>4 x 35</td></tr> <tr><td>4 x 40</td><td></td><td>5 x 50</td><td></td></tr> <tr><td>4 x 50</td><td></td><td></td><td></td></tr> </tbody> </table>	A x B dimensions	Pilot hole diameter	A x B dimensions	Pilot hole diameter	4 x 16	3.2	5 x 20	4.2	4 x 20	4 x 25	4 x 30	4 x 35	4 x 40		5 x 50		4 x 50																	
A x B dimensions	Pilot hole diameter	A x B dimensions	Pilot hole diameter																																
4 x 16	3.2	5 x 20	4.2																																
4 x 20																																			
4 x 25																																			
4 x 30																																			
4 x 35																																			
4 x 40		5 x 50																																	
4 x 50																																			

PLUS Corporation