

PSD-TS60B

Low-Profile Dual-Pole Floor Stand with 60 in. Black Poles

Color: Black

Weight 125.00 lb. | 56.7 kg

Weight Cap. per Head 200 lb. | 90.7 kg

Height 60.00 in. | 1524 mm

Pipe Size 60.00 in. | 2.4 mm



200 lb.



+60.00

DESCRIPTION

The PSD-TS60B low-profile dual-pole floor stand comes with 60 in. black poles and supports up to 200 lb. This dual pole stand is compatible with UFA, CTM, USA or RTM mounts (not included).

FEATURES

- Low-profile base (0.53 in.) can easily slide under a carpet for a seamless look
- Adjustable flat-panel placement along poles for perfect viewing height
- Cable management inside poles
- Available in 60, 72 and 84 in. heights
- Works with CTM, RTM-S, RTM-L, UFA or USA Mounts
- Complete stand includes one single-display adapter (PSD-HDCA)
- Base plate can be bolted to the floor



Touchboards

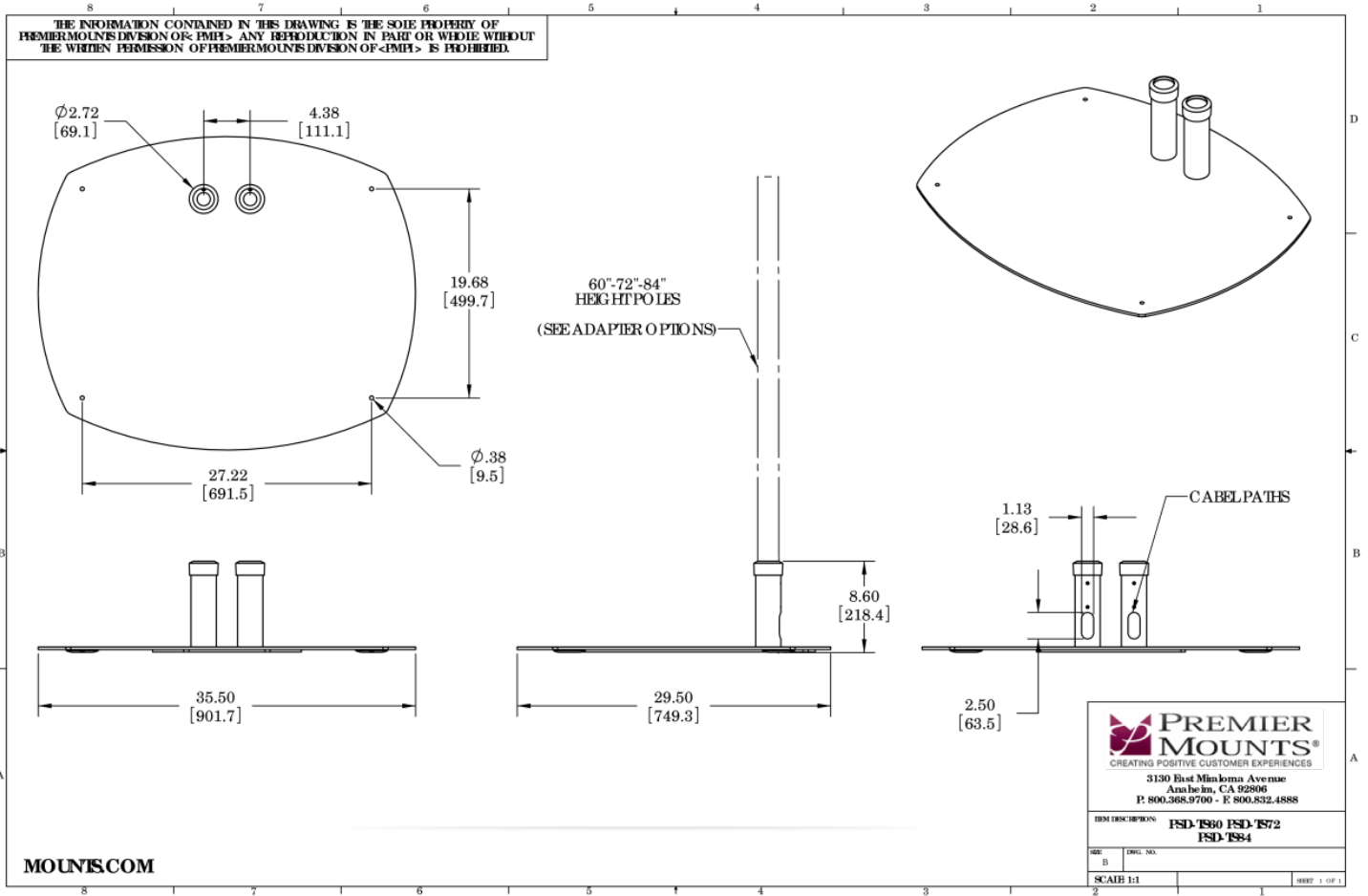
205 Westwood Ave, Long Branch, NJ 07740

Phone: 866-94 BOARDS (26273) / (732)-222-1511

Fax: (732)-222-7088 | E-mail: sales@touchboards.com

PSD-TS60B

Low-Profile Dual-Pole Floor Stand with 60 in. Black Poles



Touchboards

205 Westwood Ave, Long Branch, NJ 07740
 Phone: 866-94 BOARDS (26273) / (732)-222-1511
 Fax: (732)-222-7088 | E-mail: sales@touchboards.com