

# MT-200 MiniTweez<sup>®</sup> SMT Rework Tweezer

## Info Sheet



### Designed exclusively for PACE's new AccuDrive<sup>®</sup> Power Sources

The MT-200 reworks micro-components such as 0201s, 0402s and 0603s, and can also easily handle larger SOTs, D-PAKs, SOICs and TSOPs

Comfortable &  
Ergonomic



- Provides safe, rapid removal of surface mount components in a simple, one-handed operation
- Gear-action movement and multi-axis tip alignment provide ultimate control and targeting accuracy

- Tip-Gap Adjustment Wheel increases productivity and reduces operator fatigue during repetitive operations

- Rotational (Theta) Alignment achieves perfectly aligned tips

- Instant SetBack (ISB) Tool Stand automatically reduces tip temperature, virtually eliminates tip oxidation and extends tip life

- Patented Tip-Heater Cartridges can be changed within seconds and heat up quickly

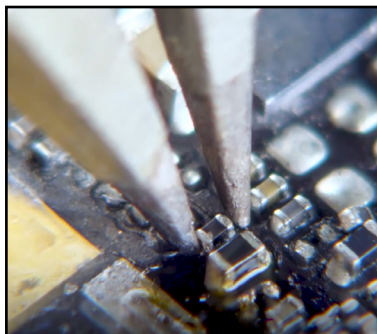
- A wide selection of low-cost, high-power Tip-Heater Cartridge Geometries are available

- Tip-Heater Cartridges supplied separately (AccuDrive<sup>®</sup>-compatible systems only)

ADS200 with  
MT-200 Bundle



Easily  
Rework 0201's



ADS200 with MT-200 MiniTweez, Chip Tip & Instant SetBack (ISB) Tool Stand: 120VAC **PN 8007-0589**; 230VAC **PN 8007-0590**

MT-200 Handpiece with Instant SetBack (ISB) Tool Stand Accessory Kit (for ADS200 Power Source): **PN 6993-0321-P1**

# AccuDrive® Tip-Heater Cartridges for the MT-200



| Tip   | Description   | Part Number  |
|---|---|--------------|
|    | Fine Point Chip Tip. For 0201, 0402 & 0804                              | 1130-1001-P1 |
|    | Fine Point Chip Tip. For Chip & SOT Removal (.05mm)                     | 1130-1002-P1 |
|    | MT-200 Tip for Chip & SOT Removal (1mm)                                 | 1130-1003-P1 |
|    | MT-200 Tip for Chip & SOT Removal (2mm)                                 | 1130-1004-P1 |
|   | MT-200 Tip for SOIC, SOT, TSOP & Connector Removal (6mm)                | 1130-1005-P1 |
|  | MT-200 Tip for SOIC, SOT, TSOP & Connector Removal (8mm)                | 1130-1006-P1 |
|  | MT-200 Tip for SOIC, SOT, TSOP & Connector Removal (10mm)               | 1130-1007-P1 |
|  | MT-200 Tip for SOIC, SOT, TSOP & Connector Removal (13mm)               | 1130-1008-P1 |
|  | MT-200 Tip for SOIC, SOT, TSOP & Connector Removal (18mm)               | 1130-1009-P1 |
|  | MT-200 Tip for SOIC, SOT, TSOP & Connector Removal (28mm)               | 1130-1010-P1 |
|  | MT-200 Extended Reach Tip for Chip Removal (1mm)                        | 1130-1011-P1 |
|  | Angled Fine Point Micro Chip Tip for 0201, 0402, 0804 micro-chips       | 1130-1013-P1 |
|  | Angled Fine Point Micro Chip Tip, Conical Smooth, for 0201, 0402 & 0804 | 1130-1014-P1 |

[www.paceworldwide.com](http://www.paceworldwide.com)

 [www.facebook.com/paceworldwide](https://www.facebook.com/paceworldwide)  
 [www.youtube.com/paceworldwide](https://www.youtube.com/paceworldwide)

phone 910.695.7223  
 toll free 877.882.7223 (PACE)  
 fax 910.695.1594  
 email [support@paceworldwide.com](mailto:support@paceworldwide.com)

**PAGE**®  
 paceworldwide.com



Leaders in the industry since 1958