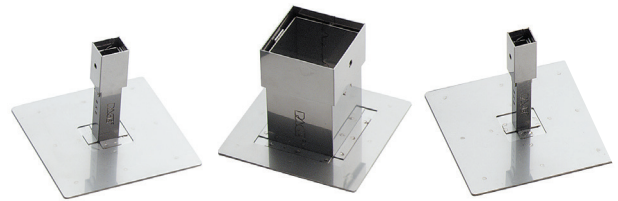


ThermoFlo Nozzle Chart



Maximum Component Size	Nozzle Dimensions	Nozzle P/N
5mm (0.197") x 5mm (0.197")	8mm (0.31") x 8mm (0.31")	4038-7001
6mm (0.24") x 8mm (0.31")	9mm (0.35") x 11mm (0.43")	4038-7002
8.2mm (0.32") x 12.7mm (0.50")	11.1mm (0.44") x 15.6mm (0.61")	4038-7003
9mm (0.35") x 9mm (0.35")	12mm (0.47") x 12mm (0.47")	4038-7004
10mm (0.39") x 10mm (0.39")	13mm (0.51") x 13mm (0.51")	4038-7005
13mm (0.51") x 13mm (0.51")	16mm (0.63") x 16mm (0.63")	4038-7006
15mm (0.59") x 15mm (0.59")	18mm (0.71") x 18mm (0.71")	4038-7007
17mm (0.67") x 17mm (0.67")	20mm (0.79") x 20mm (0.79")	4038-7008
23mm (0.90") x 23mm (0.90")	26mm (1.02") x 26mm (1.02")	4038-7009
27mm (1.06") x 27mm (1.06")	30mm (1.18") x 30mm (1.18")	4038-7010
35mm (1.37") x 35mm (1.37")	38mm (1.5") x 38mm (1.5")	4038-7011
44.5mm (1.75") x 44.5mm (1.75")	47.5mm (1.87") x 47.5mm (1.87")	4038-7012
LQFP 22mm (0.87") x 22mm (0.87")	22mm (0.87") x 22mm (0.87")	4038-7013*
LQFP 16mm (0.63") x 16mm (0.63")	16mm (0.63") x 16mm (0.63")	4038-7014*
LQFP 30mm (1.18") x 30mm (1.18")	30mm (1.18") x 30mm (1.18")	4038-7015*
LQFP 9mm (0.35") x 9mm (0.35")	9mm (0.35") x 9mm (0.35")	4038-7016*
LQFP 12mm (0.47") x 12mm (0.47")	12mm (0.47") x 12mm (0.47")	4038-7017*
LQFP 26mm (1.02") x 26mm (1.02")	26mm (1.02") x 26mm (1.02")	4038-7018*
LQFP 16mm (0.63") x 22mm (0.87")	16mm (0.63") x 22mm (0.87")	4038-7019*
LQFP 14mm (0.55") x 14mm (0.55")	14mm (0.55") x 14mm (0.55")	4038-7020*
14mm (0.55") x 22mm (0.87")	17mm (0.67") x 25mm (0.99")	4038-7021
50mm (1.97") x 50mm (1.97")	53mm (2.1") x 53mm (2.1")	4038-7022
60mm (0.75") x 60mm (0.75")	63mm (2.5") x 63mm (2.5")	4038-7023
40mm (1.57") x 40mm (1.57")	43mm (1.7") x 43mm (1.7")	4038-7024
25mm (0.98") x 25mm (0.98")	28mm (1.1") x 28mm (1.1")	4038-7025
19mm (0.75") x 19mm (0.75")	22mm (0.87") x 22mm (0.87")	4038-7026
16.1mm (0.64") x 8mm (0.31")	18.2mm (0.72") x 9.9mm (0.39")	4038-7027
33mm (1.29") x 33mm (1.29")	36mm (1.42") x 36mm (1.42")	4038-7028
21mm (0.83") x 25mm (0.98")	23mm (0.91") x 27mm (1.06")	4038-7029
29mm (1.14") x 29mm (1.14")	32mm (1.26") x 32mm (1.26")	4038-7030
31mm (1.22") x 31mm (1.22")	34mm (1.33") x 34mm (1.33")	4038-7031
42mm (1.65") x 42mm (1.65")	45mm (1.77") x 45mm (1.77")	4038-7032

*Nozzles have baffles/shielding inside

Maximum Component Size	Nozzle Dimensions	Nozzle P/N
Connector, 16mm (0.63") x 13mm (0.51")	16mm (0.63") x 13mm (0.51")	4038-7033*
Connector 27mm (1.06") x 13mm (0.51")	27mm (1.06") x 13mm (0.51")	4038-7034*
Connector, 30mm (1.18") x 12mm (0.47")	30mm (1.18") x 12mm (0.47")	4038-7035*
Connector, 19mm (0.75") x 8mm (0.31")	19mm (0.75") x 8mm (0.31")	4038-7036*
55mm (2.17") x 16.5mm (0.65")	58mm (2.28") x 19.4mm (0.76")	4038-7037
30mm (1.18") x 17mm (0.68")	30mm (1.18") x 17mm (0.68")	4038-7038*
13mm (0.51") x 10mm (0.40")	16mm (0.63") x 13mm (0.51")	4038-7039
7.3mm (0.29) x 7mm (0.27")	10mm (0.40") x 9.9mm (0.39")	4038-7040
8mm (0.32") x 8mm (0.32")	11mm (0.43") x 11mm (0.43")	4038-7041
6mm (0.24") x 6mm (0.24")	9mm (0.35") x 9mm (0.35")	4038-7042
44mm (1.73") x 44mm (1.73")	47mm (1.85") x 47mm (1.85")	4038-7043
30mm (1.18") x 30mm (1.18")	33mm (1.3") x 33mm (1.3")	4038-7044
43mm (1.7") x 43mm (1.7")	46mm (1.81") x 46mm (1.81")	4038-7045
46mm (1.81") x 46mm (1.81")	49mm (1.93") x 49mm (1.93")	4038-7046
41mm (1.61") x 41mm (1.61")	43mm (1.7") x 43mm (1.7")	4038-7047
28mm (1.1") x 28mm (1.1")	31mm (1.22") x 31mm (1.22")	4038-7048
48mm (1.89") x 48mm (1.89")	51mm (2") x 51mm (2")	4038-7049
11.4mm (0.45") x 5.1mm (0.20")	14.4mm (0.56") x 8mm (0.32")	4038-7050
32.5mm (1.28") x 23mm (0.90")	35.5mm (1.40") x 26mm (1.02")	4038-7051
17mm (0.67") x 11mm (0.43")	20mm (0.79") x 14mm (0.55")	4038-7052
32mm (1.26") x 17mm (0.67")	35mm (1.37") x 20mm (0.79")	4038-7053
42.5mm (1.67") x 32.5mm (1.27")	45.5mm (1.80") x 35.5mm (1.39")	4038-7054
5.2mm (0.20") x 5.2mm (0.20")	8.1mm (0.32") x 8.1mm (0.32")	4038-7055
25mm (0.98") x 32.5mm (1.28")	27.8mm (1.10") x 35.4mm (1.39")	4038-7056
22mm (0.86") x 22mm (0.86")	25mm (0.98") x 25mm (0.98")	4038-7057
20mm (0.79") x 8mm (0.31")	23mm (0.90") x 11mm (0.43")	4038-7058
28.5mm (1.12") x 17mm (0.67")	31.5mm (1.12") x 20mm (0.79")	4038-7059
21mm (0.83") x 12.75mm (0.50")	24mm (0.94") x 15.75mm (0.62")	4038-7060
20mm (0.79") x 20mm (0.79")	23mm (0.90") x 23mm (0.90")	4038-7061
15.6mm (0.61") x 5.1mm (0.20")	18.6mm (0.73") x 8.1mm (0.31")	4038-7062
15.34mm (0.60") x 12.7mm (0.50")	18.34mm (0.72") x 15.7mm (0.61")	4038-7063
44mm (1.73") x 33mm (1.29")	47mm (1.85") x 36mm (1.41")	4038-7064
40.1mm (1.58") x 26.8mm x (1.05")	40.1mm (1.58") x 26.8mm x (1.05")	4038-7066*
75mm (2.96") x 75mm (2.96")	78mm (3.07") x 78mm (3.07")	4038-7069
14mm (0.55") x 10mm (0.39")	16.9mm (0.66") x 13mm (0.51")	4038-7070
37mm (1.46") x 37mm (1.46")	40mm (1.57") x 40mm (1.57")	4038-7071
17mm (0.67") x 23mm (0.91")	19.9mm (0.78") x 26mm (1.02")	4038-7072
16mm (0.63") x 22mm (0.87")	19mm (0.74") x 25mm (0.98")	4038-7074

*Nozzles have baffles/shielding inside

ThermoFlo Nozzle Chart

Maximum Component Size	Nozzle Dimensions	Nozzle P/N
14.5mm (0.571") x 14.5mm (0.571")	17.3mm (0.685") x 17.3mm (0.685")	4038-7075
8mm (0.32") x 9mm (0.35")	11mm (0.43") x 12mm (0.47")	4038-7081
61mm (2.40") x 41mm (1.61")	64mm (2.52") x 44mm (1.73")	4038-7082
54mm (2.13") x 17mm (0.67")	57mm (2.24") x 20mm (0.78")	4038-7083
13mm (0.51") x 15mm (0.59")	16mm (0.63") x 18mm (0.71")	4038-7084
7mm (0.28") x 6mm (.24")	10mm (0.39") x 9mm (0.35")	4038-7085
9mm (0.35") x 7.5mm (0.30")	12mm (0.47") x 10mm (0.41")	4038-7086
11mm (0.43") x 10mm (0.39")	14mm (0.55") x 13mm (0.51")	4038-7087
14mm (0.55") x 11mm (0.44")	17mm (0.67") x 14mm (0.55")	4038-7088
12mm (0.472") x 12mm (0.472")	14.9mm (0.586") x 14.9mm (0.586")	4038-7089
9mm (0.35") x 6mm (0.24")	12mm (0.47") x 9mm (0.35")	4038-7090
Micro Nozzle Kit	1mm to 8mm square	6993-0244-P1

*Nozzles have baffles/shielding inside

Please visit www.paceworldwide.com for more information on the wide range of PACE's Nozzles and Component Stenciling.