

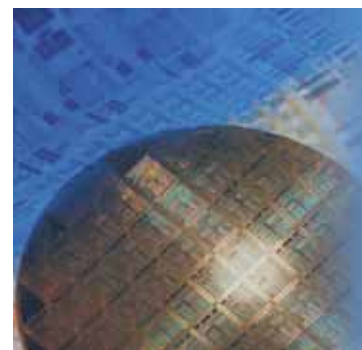


aerospace
climate control
electromechanical
filtration
fluid & gas handling
hydraulics
pneumatics
process control
sealing & shielding



IQAN Software Studios Software Tools

Electronic Control Systems



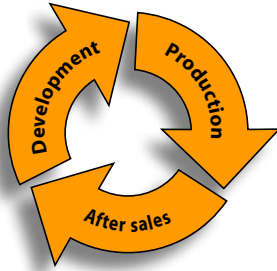
ENGINEERING YOUR SUCCESS.

Machine life cycle model

Having previously been a traditional purchase/sales component, today's control system involves the whole chain of a machine's life, known as its life-cycle cost. LCC plays an increasingly strong role in the end user's decision. It is no longer based on just the up-front product cost.

This puts new demands on the level of co-operation between suppliers and the OEM, on more than the traditional R&D level. Today, an OEM's production department wants to automate, log and trace the delivery status; the service department wants to handle warranties, offer proactive maintenance and download machine upgrades; and the machine owner wants a reliable machine with high productivity and low downtime. To meet all these demands, IQAN Software Studios were designed to fulfill the needs of the machine life cycle model.

The machine life cycle is divided into three phases; development, production and after sales.



Development

The OEM development team considers time to market as one of the most important factors for return on investment. Time to market is primarily set by design time, application programming, simulating, verifying and creating documentation. Finally, the machine is commissioned for production, where user friendly, high-capacity software is essential to meet these demands.

Production

The production department constantly strives for improved quality, simpler configuration, faster start-up and reduced production line set-up time, with the possibility to trace and record delivery status.

After sales

The after sales department wants a reliable machine with minimum downtime, simple maintenance, maximum field service support and the possibility of following up warranty issues.

Software tools

The IQAN software studios cover all phases of a machine's life cycle, from development through production to after sales. There are three different studios available; IQAN Creative Studio, IQAN Productive Studio and IQAN Active Studio.

IQAN Creative studio

IQAN Creative studio is a user-programmable software package for the R&D department. It includes tools for application development, simulation and initial setup.

- IQANdesign
- IQANsimulate
- IQANrun
- IQANanalyze

IQAN Productive studio

IQAN Productive studio is a software package for the manufacturing and service departments. It includes development tools for customization and automation of production and maintenance processes.

- IQANscript
- IQANcustomize
- IQANsimulate
- IQANrun

IQAN Active studio

IQAN Active studio is a software package for service and production personnel. It includes tools for machine diagnostics, setup and simulation.

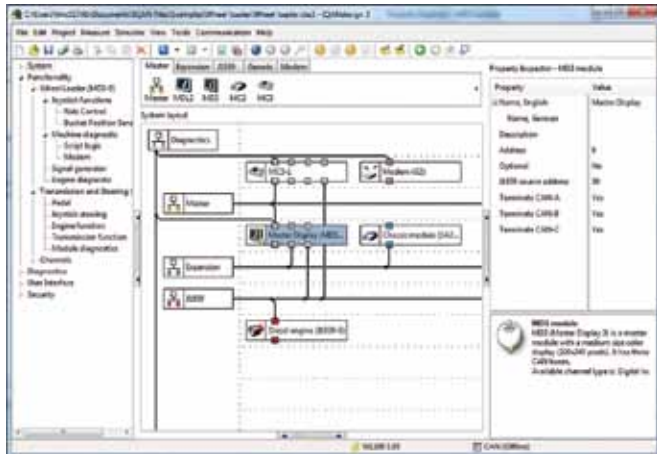
- IQANrun
- IQANsimulate

IQAN Creative Studio

The main philosophy behind the IQAN Creative Studio is that the OEM, with their extensive knowledge of their machine, should be able to write the desired machine functionality directly, without having programming experience.

IQANdesign

IQANdesign is a high level graphical design tool which simplifies application development for your mobile machine and reduces development time.



IQANdesign main window.

This tool is mainly used for system layout and machine function design. There is a wide range of predefined building blocks available, such as closed loop control, signal processing, math calculations, communication protocols (e.g. SAE J1939) and system diagnostics.

IQANdesign can be used to design systems with multiple masters. Multiple master design work is simplified by use of a project file that contains applications for all IQAN masters in the system.

In addition to machine function design IQANdesign also provides a simple way to accomplish display page programming using a simple drag and drop interface. The menu system can be customized as well.

Integrated machine security access control allows you to grant appropriate access to production and service personnel during the application development process. IQANdesign also allows you to create all of the desired machine logging capabilities and methods for gathering statistics.

IQANdesign supports multiple languages within one application, even languages with symbol based alphabets, such as Chinese.



IQANsimulate

IQANsimulate is a simulation tool, which simplifies function test, validation and reduces development time. It simulates all of the hardware modules in an IQAN application. Software simulation is a safer way to test new applications than on an actual machine.

Simulation of all input values in your application is easy using the on screen slide bar interface. While simulating inputs you can simultaneously measure the resulting output values. Together with module and I/O error simulation you will be able to perform machine FMEA (Failure Modes and Effects Analysis).

The simulator will behave just like the “real thing”, meaning you will be able to look at your display pages, adjust parameters, view logs, test your user interface and much more.



IQANsimulate run mode.

IQANrun

During the development phase you can use IQANrun to optimize your machine's performance with the help of IQANrun's advanced graphical measure and machine statistics collection functions.

IQANrun also offers a convenient way of developing the basic machine settings during the prototyping phase.

IQANanalyze

IQANanalyze is a general purpose CAN-bus analyzer.

With IQANanalyze you can, in an easy manner, view the traffic on the CAN-bus. You can also record the traffic data that is viewed and save it for later use.

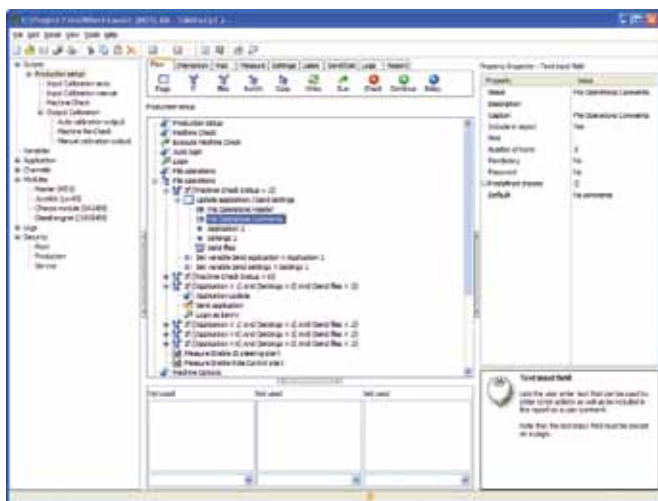
Before using this product you are recommended to have knowledge of the CAN-bus and the system you are analyzing.

IQAN Productive Studio - Script

The script concept was developed to help OEM production departments to create routines for testing, tuning, setting options, logging, delivery sheets, etc. The service department can also take advantage of scripts to create tailor-made fault-finding trees, service procedures, intervals and much more.

IQANscript

With IQANscript you create scripts using simple drag and drop operations. Each script is a sequence of actions that can be executed in IQANrun. A wide range of script actions are available to build scripts for different purposes.



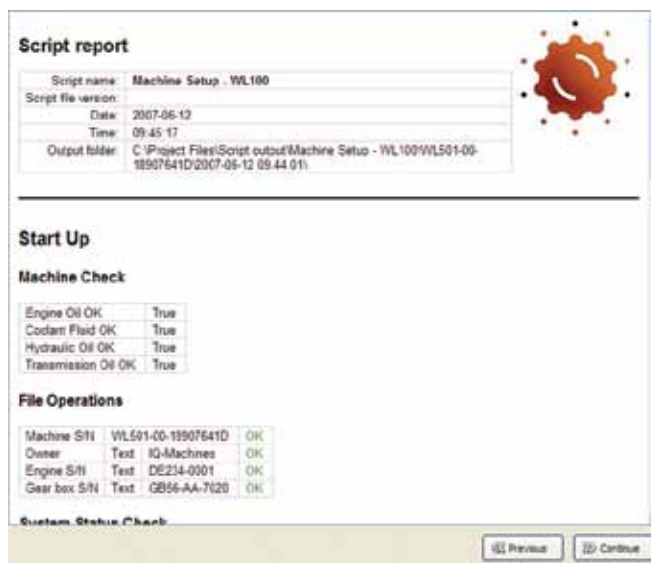
IQANscript main window.

Using flow control actions such as conditions and loops you can control how the script is executed. With the different measure and log actions, information can be retrieved from the master units to be analyzed by the script or displayed to the user.

Setting actions provide full control of the master settings, making it possible to fine tune the machine using a script.

IQANscript provides powerful building blocks for the script user interface. Using formatted text and images the script user is guided through otherwise complex operations. Input from the user can also be collected and used by the script.

To provide traceability you can include a customized report in the script. When the script is executed the results will be recorded in the report, making it possible to get a good overview as well as saving the report for future use.



Script report.

Script examples

IQANscript allows you to design machine startups with secured and standardized procedures. This increases manufacturing productivity and initial machine quality.

Using IQANscript you can also control your service procedures. This increases field service integrity and long term machine quality. IQANscript can control equipment service schedules through inspection and error log's.

By creating troubleshooting scripts you can guide service personnel during the fault finding process. This decreases the fault finding time and makes it possible for less trained personnel to find problems that otherwise would require expert knowledge.

IQANrun

During the script design phase you can use IQANrun to execute scripts. This allows you to debug and optimize them.

When using IQANrun for debugging scripts, extra debug information is available. This makes it possible to trace the flow of the script while it is executed to find problems in the script design.

IQANsimulate

IQANsimulate can be used instead of a "real" master module when debugging your scripts before sending them to the production floor or field.

IQAN Productive Studio - Customize

Today, service technicians have a large number of tools and documents to keep track of. Sometimes, it is hard for them to find the right information and to be sure they use the correct version of a software or document.

The customize feature in IQAN Productive Studio was developed to solve this problem. It allows you to collect all machine software and information in one user interface and to distribute it to your users quickly and easily via the web.

IQANcustomize

IQANcustomize is a tool that enables customization of the IQANrun software functions and appearance to create a unique service and production tool. This is done by creating one or more pages using the graphical page editor in IQANcustomize. The editor is fully HTML compatible.

The pages can contain specific information for each machine type and will be displayed when IQANrun is started. Your company logo, graphics, links and information may all be integrated in the user interface of IQANrun. Using IQANcustomize you can also show or hide IQANrun functions, or make them available as links on any page, to assist users through a troubleshooting or tuning process.

IQANcustomize has a built-in function that allows you to upload changes to your company update server. This way you can easily distribute information, the latest version of manuals, applications and other files to a large number of users.



IQANcustomize main window.

Archive examples

An archive is where IQANcustomize stores all information used in the customized IQANrun. It can contain anything from machine application and settings to instructions and manuals.



Start page in IQANrun using an archive.

Production archive

Production procedures, machine setup scripts, application and setting files, pre-delivery inspection scripts.

Service archive

Service manuals, service instructions and scripts, fault finding guides.

Machine owner archive

Machine documentation, manuals, videos, machine productivity and fuel consumption measurement.

IQANrun

During the archive design phase you will use IQANrun to view and optimize the user interface of your archive pages.

IQANsimulate

With the help of IQANsimulate you can easily test your archive before uploading them to the field.

IQAN Active Studio

Getting a machine design into production is time consuming. Testing equipment and procedures have to be developed and machine start-up and delivery status have to be recorded. Fortunately, IQANrun is tailor-made to fulfill all of these demands. IQANrun may also be used by the service department and can be adapted to feature machine-specific procedures for maintenance, fault finding and web supported machine upgrades, while the machine owner can access spare parts manuals, maintenance videos, service intervals and service suggestions via IQANrun.

IQANrun

IQANrun software is a user-friendly service, production and machine owner tool which includes a powerful, graphical measure capability and simplifies machine tuning for increased productivity.

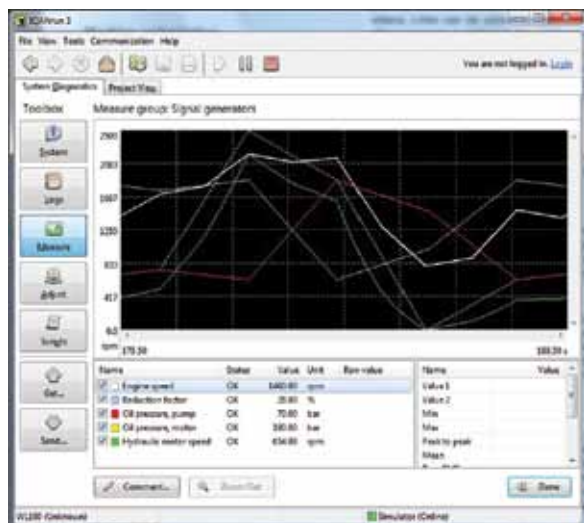
Machine optimization

To help optimize your machines, IQANrun has functions for adjusting inputs, outputs and parameters. There is also a settings viewer that gives a good overview of the complete machine setup.

Troubleshooting

IQANrun is a powerful troubleshooting tool. It has several measuring functions built-in, both numerical and graphical. You can measure scaled value, raw value (mV, mA, etc) and status.

Features include an application viewer, log management and system status screens. There is even a function that lets you compare the settings of two machines, value by value, to help you find differences.



IQANrun graphical measure.

Security

IQANrun comes with full support for all security functions built into IQAN. It allows you to login to your machines and to give access to functions and parameters that are protected by the application.



IQANrun security message.

Customization

IQANrun can be customized to create a user friendly interface that fits the end user's needs perfectly. It is possible to embed documents of all kinds, images and videos. Links can be added to external web sites or other programs installed on the same computer.

The customized user interface can easily be updated by the click of a single menu item – Check For Updates. This will search for updated pages and documents on the OEM's web site, download and install them on the local computer.

Scripts

Script execution is a useful feature in IQANrun. It allows you to run automated procedures for production, service or troubleshooting.

IQANsimulate

IQANsimulate software is a simulation tool that can be used together with IQANrun to do desktop support or class room trainings. It simulates a complete IQAN system without the need for any hardware.

Support call center

By the use of clone files you can receive an exact copy of your client's machine with application, settings and logs. The clone file can be used by IQANsimulate to do an exact simulation of that machine. This will allow call center personnel to do phone support without the need for any IQAN hardware.

Training/education

IQANsimulate offers an exact copy of the master module display and its user interface, which makes it an excellent tool for class room training. Running it on a large screen will allow you to present display pages and menu system for a large group of students.

Ordering part numbers

20073643

IQAN Creative Studio

20073642

IQAN Active Studio

20073644

IQAN Productive Studio

Operating system requirements

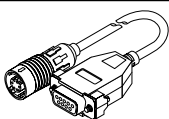
Windows 7 or higher.

IQAN Software Studios are delivered on USB flash drive. Printed user manuals and cables are not included. Order the accessories you need from the list below.

Accessories

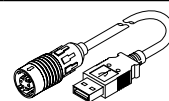
5030103

RS-232 cable: 1,5 meters, fits to IQAN-MDL2 (for PC connection to IQANdesign and IQANrun)



5030110

USB cable: 1,5 meters, fits to IQAN-MDL2 (for PC connection to IQANdesign and IQANrun)



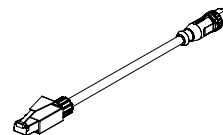
5030124

Panel mount USB adapter cable: 0,4 meter, fits to IQAN-MC2, IQAN-MD3



20077780

Ethernet cable: 1,5 meters, fits to IQAN-MD4 (for PC connection to IQANdesign and IQANrun)



Other non-Parker accessories available at retail electronic stores

USB peripheral cable: fits to 5030124 (for PC connection to IQANdesign and IQANrun)

USB to CAN adapter: Ixxat, Kvaser or NI types are supported (for more reliable PC connection, over CAN).



WARNING

FAILURE OR IMPROPER SELECTION OR IMPROPER USE OF THE PRODUCTS AND/OR SYSTEMS DESCRIBED HEREIN OR RELATED ITEMS CAN CAUSE DEATH, PERSONAL INJURY AND PROPERTY DAMAGE.

This document and other information from Parker Hannifin Corporation, its subsidiaries and authorized distributors provide product and/or system options for further investigation by users having technical expertise. It is important that you analyze all aspects of your application, including consequences of any failure, and review the information concerning the product or system in the current product catalogue. Due to the variety of operating conditions and applications for these products or systems, the user, through its own analysis and testing, is solely responsible for making the final selection of the products and systems and assuring that all performance, safety and warning requirements of the application are met.

The products described herein, including without limitation, product features, specifications, designs, availability and pricing, are subject to change by Parker Hannifin Corporation and its subsidiaries at any time without notice.

Offer of Sale

Please contact your Parker representation for a detailed "Offer of Sale".

Parker Worldwide

Europe, Middle East, Africa

AE – United Arab Emirates, Dubai

Tel: +971 4 8127100
parker.me@parker.com

AT – Austria, Wiener Neustadt

Tel: +43 (0)2622 23501-0
parker.austria@parker.com

AT – Eastern Europe, Wiener Neustadt

Tel: +43 (0)2622 23501 900
parker.easteurope@parker.com

AZ – Azerbaijan, Baku

Tel: +994 50 22 33 458
parker.azerbaijan@parker.com

BE/LU – Belgium, Nivelles

Tel: +32 (0)67 280 900
parker.belgium@parker.com

BG – Bulgaria, Sofia

Tel: +359 2 980 1344
parker.bulgaria@parker.com

BY – Belarus, Minsk

Tel: +48 (0)22 573 24 00
parker.poland@parker.com

CH – Switzerland, Etoy

Tel: +41 (0)21 821 87 00
parker.switzerland@parker.com

CZ – Czech Republic, Klecany

Tel: +420 284 083 111
parker.czechrepublic@parker.com

DE – Germany, Kaarst

Tel: +49 (0)2131 4016 0
parker.germany@parker.com

DK – Denmark, Ballerup

Tel: +45 43 56 04 00
parker.denmark@parker.com

ES – Spain, Madrid

Tel: +34 902 330 001
parker.spain@parker.com

FI – Finland, Vantaa

Tel: +358 (0)20 753 2500
parker.finland@parker.com

FR – France, Contamine s/Arve

Tel: +33 (0)4 50 25 80 25
parker.france@parker.com

GR – Greece, Athens

Tel: +30 210 933 6450
parker.greece@parker.com

HU – Hungary, Budaoers

Tel: +36 23 885 470
parker.hungary@parker.com

IE – Ireland, Dublin

Tel: +353 (0)1 466 6370
parker.ireland@parker.com

IT – Italy, Corsico (MI)

Tel: +39 02 45 19 21
parker.italy@parker.com

KZ – Kazakhstan, Almaty

Tel: +7 7273 561 000
parker.easteurope@parker.com

NL – The Netherlands, Oldenzaal

Tel: +31 (0)541 585 000
parker.nl@parker.com

NO – Norway, Asker

Tel: +47 66 75 34 00
parker.norway@parker.com

PL – Poland, Warsaw

Tel: +48 (0)22 573 24 00
parker.poland@parker.com

PT – Portugal, Leca da Palmeira

Tel: +351 22 999 7360
parker.portugal@parker.com

RO – Romania, Bucharest

Tel: +40 21 252 1382
parker.romania@parker.com

RU – Russia, Moscow

Tel: +7 495 645-2156
parker.russia@parker.com

SE – Sweden, Spånga

Tel: +46 (0)8 59 79 50 00
parker.sweden@parker.com

SK – Slovakia, Banská Bystrica

Tel: +421 484 162 252
parker.slovakia@parker.com

SL – Slovenia, Novo Mesto

Tel: +386 7 337 6650
parker.slovenia@parker.com

TR – Turkey, Istanbul

Tel: +90 216 4997081
parker.turkey@parker.com

UA – Ukraine, Kiev

Tel: +48 (0)22 573 24 00
parker.poland@parker.com

UK – United Kingdom, Warwick

Tel: +44 (0)1926 317 878
parker.uk@parker.com

ZA – South Africa, Kempton Park

Tel: +27 (0)11 961 0700
parker.southafrica@parker.com

North America

CA – Canada, Milton, Ontario

Tel: +1 905 693 3000

US – USA, Cleveland

(industrial)
Tel: +1 216 896 3000

US – USA, Elk Grove Village

(mobile)
Tel: +1 847 258 6200

Asia Pacific

AU – Australia, Castle Hill

Tel: +61 (0)2-9634 7777

CN – China, Shanghai

Tel: +86 21 2899 5000

HK – Hong Kong

Tel: +852 2428 8008

ID – Indonesia, Tangerang

Tel: +62 21 7588 1906

IN – India, Mumbai

Tel: +91 22 6513 7081-85

JP – Japan, Fujisawa

Tel: +81 (0)4 6635 3050

KR – South Korea, Seoul

Tel: +82 2 559 0400

MY – Malaysia, Shah Alam

Tel: +60 3 7849 0800

NZ – New Zealand, Mt Wellington

Tel: +64 9 574 1744

SG – Singapore

Tel: +65 6887 6300

TH – Thailand, Bangkok

Tel: +662 186 7000

TW – Taiwan, New Taipei City

Tel: +886 2 2298 8987

VN – Vietnam, Ho Chi Minh City

Tel: +84 8 3999 1600

South America

AR – Argentina, Buenos Aires

Tel: +54 3327 44 4129

BR – Brazil, Cachoeirinha RS

Tel: +55 51 3470 9144

CL – Chile, Santiago

Tel: +56 2 623 1216

MX – Mexico, Toluca

Tel: +52 72 2275 4200



EMEA Product Information Centre

Free phone: 00 800 27 27 5374

(from AT, BE, CH, CZ, DE, DK, EE, ES, FI, FR, IE, IL, IS, IT, LU, MT, NL, NO, PL, PT, RU, SE, SK, UK, ZA)

US Product Information Centre

Toll-free number: 1-800-27 27 537

www.parker.com

Your local authorized Parker distributor