

Touchboards

205 Westwood Ave, Long Branch, NJ 07740
Phone: 866-94 BOARDS (26273) / (732)-222-1511
Fax: (732)-222-7088 | E-mail: sales@touchboards.com



AV Racks & Accessories

peerless-AV®

About Us



peerless-AV®

Peerless-AV has been a leading designer, manufacturer and distributor of Made-in-the-USA audio-visual solutions for over 45 years. Peerless-AV provides innovative solutions that focus on quality, ease-of-installation, and functionality while still offering pleasing aesthetics and ultimately the best value. With our high standards and expertise, both commercial and residential installers worldwide trust Peerless-AV products for installations in schools, universities, offices, healthcare facilities, hotels, sports arenas, training facilities, and retail environments, as well as in homes.

Based on our vision of quality, functionality, safety, security, and reliability, we designed a line of rack systems with a mind toward the future of electronic packaging to offer high-quality, cost-sensitive solutions for the industry's most demanding electronic packaging needs. We gathered a group of rack consultants, contractors, and system integrators and used their input and expertise to develop each of our rack products. The result is a line of racks that combines modern, streamlined design with an ease-of-use and flexibility that covers any commercial or residential electronic packaging requirements.

About Us



Our racks have a static load rating up to 12,250lb, are available in a variety of sizes, and feature a new line of accessories that expands your design capabilities and options. With our online rack configurator, you can easily design your own unit, obtain drawings, see billing information, and have your product delivered more quickly.

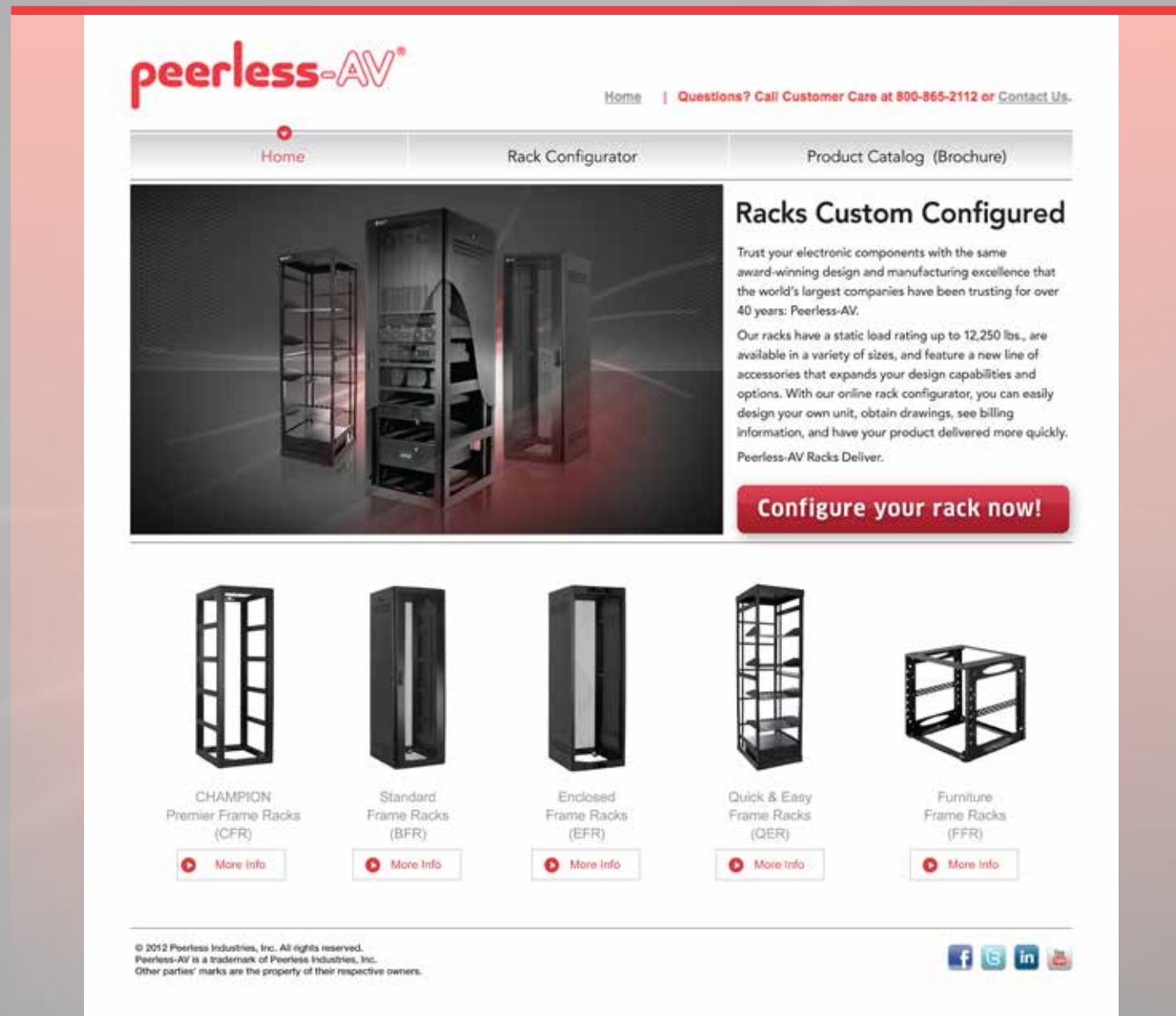
Trust your electronic components with the same award-winning design and manufacturing excellence that the world's largest companies have been trusting for over 45 years: Peerless-AV.

Designed and
Manufactured in the USA



Visit Us Online

Configure Online



The screenshot shows the Peerless-AV website's Rack Configurator page. At the top, the Peerless-AV logo is on the left, and navigation links for Home, Questions? Call Customer Care at 800-865-2112 or Contact Us, Rack Configurator, and Product Catalog (Brochure) are on the right. The main content area features a large image of a rack with the heading "Racks Custom Configured". Below this, there is a paragraph of text describing the company's history and the capabilities of their racks. A prominent red button says "Configure your rack now!". At the bottom, there are five icons representing different rack models: CHAMPION Premier Frame Racks (CFR), Standard Frame Racks (BFR), Enclosed Frame Racks (EFR), Quick & Easy Frame Racks (QER), and Furniture Frame Racks (FFR). Each icon has a "More Info" button below it. The footer contains copyright information and social media icons for Facebook, Twitter, LinkedIn, and YouTube.



Peerless-AV Online Configurator

Use our online configurator to build your own rack, select a pre-configured rack or customize both with accessories. You'll receive:

- One part number
- Drawing of all accessories shown as mounted in your rack
- 3D model to explore design
- Complete bill of material with part numbers, descriptions, quantities and shipping weights
- Accessory order configuration

Configure your custom rack @ racks.peerless-av.com

Overview



CFR

The CFR is the optimal rack for larger cabling requirements and features open sides for easy access to your electronic equipment. This fully welded rack incorporates wider main channels and a heavy-duty caster base as part of the rack's robust design. Two removable rear plates are incorporated into the rack at the top and base for electrical wiring. The CFR has been tested to a static load rating of 12,250lb, ensuring the security of your electronic components. Two pairs of fully adjustable mounting channels are included and feature marked RU heights for fast and easy equipment installation. CFR racks are available in four different heights and two depths and can be used as standalone racks or ganged together. A full line of accessories makes this a flexible racking system. Four 1,000lb leg levelers and mounting hardware are included with each rack. CFR racks are available in any of our 10 standard colors and custom colors are available upon request.



BFR

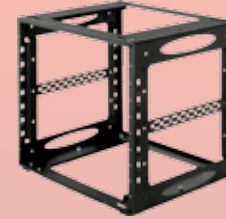
The BFR features open sides for easy access to your electronic equipment. This fully welded rack incorporates a heavy-duty caster base for stability and mobility, and two removable rear plates at the top and base for electrical wiring. BFR has been tested to a static load rating of 12,250lb, ensuring the security of your electronic components. Two pairs of fully adjustable mounting channels, featuring marked RU heights, make equipment installation quick and easy. BFR racks are available in four different heights and depths. They can be used as standalone racks or ganged together. A full line of accessories provides expanded racking capabilities. Four 1,000lb leg levelers and mounting hardware are included with each rack. BFR racks are available in any of our 10 standard colors and custom colors are available upon request.



EFR

The EFR is a fully welded rack that incorporates non-removable solid side panels and a heavy-duty caster base as part of its robust design. Two removable rear plates are incorporated into the rack, top and base, for electrical wiring. The EFR's 12,250lb static load rating ensures the safety and security of your electronic components. EFR includes two pairs of fully adjustable mounting channels with marked RU heights, allowing fast, easy equipment installation. EFR racks are available in six different heights and two depths. They can be used as standalone racks or ganged together. A full line of accessories helps keep your equipment organized. Four 1,000lb leg levelers and mounting hardware are included with each rack. EFR racks are available in any of our 10 standard colors and custom colors are available upon request.

Overview



FFR

FFR is Peerless-AV's series of low profile, fully welded, open racks that are perfect for mounting all of your AV equipment inside lecterns, credenzas and entertainment systems. FFR racks provide a maximum amount of space in a minimal, space saving design. Delrin® runners on the bottom of the rack allow you to slide the rack in and out easily without scratching furniture. The rack's four corner posts feature #10-32 tapped mounting rails with individual RU markings for easy equipment mounting. The FFR is available in seven different heights and two depths. The FFR features a durable, black powder coat finish.



Universal Accessories

Peerless-AV offers a full line of accessories for its racks, including top and side panels, front and rear doors, and internal accessories such as shelves, drawers, power strips and fan panels. Peerless-AV accessories expand the capabilities of your rack system with simple, standardized solutions. Our online rack configurator helps you craft the perfect design for your system.



QER

QER was designed to provide safe and secure mounting for all AV equipment while saving the installer valuable time at every job site. This versatile rack system is available in six different heights and two different depths. The open-frame design provides stability and makes assembly quick and easy. Shelves and other components can be added in minutes with the help of silk-screened RU markings. QER offers integrated cooling and power management options to adapt to the evolving AV environment and features a durable, black powder coat finish.



QER Accessories

Peerless-AV offers a full line of accessories for QER, including side panels, front and rear doors, and internal accessories such as shelves, drawers, power strips and fan panels. Peerless-AV accessories expand the capabilities of your rack system with simple, standardized solutions. Our online rack configurator helps you craft the perfect design for your system.

View our 10 standard color choices for our racks on page 15.

CFR Racks



CFR

CFR racks have a load rating of 12,250lb and feature wider main channels for larger cable bundles, increasing the overall rack width to 24". This rack features fully welded construction with rack depths of 27.5" and 32.5", and available RU heights of 24RU, 37RU, 40RU and 44RU. They can be easily joined together or used as standalone racks. CFR racks include two pairs of fully adjustable mounting channels featuring individually numbered RUs. CFR features two knockout plates in the back of the rack, two ground studs in the caster base, four 1,000lb leg levelers and mounting hardware. CFR racks are available in any of our 10 standard colors and custom colors are available upon request.



CFR

RU Height	Overall Height	27.5" Depth (24.5" usable depth)	32.5" Depth (29.5" usable depth)
44RU (77")	82.75"	C-44-275T	C-44-325T
40RU (70")	75.75"	C-40-275T	C-40-325T
37RU (64.75")	70.5"	C-37-275T	C-37-325T
24RU (42")	44.75"	C-24-275T	C-24-325T

Note: Part numbers listed include two pairs of #10-32 Tapped Mounting Channels. For M6 Square Hole Mounting Channels, remove "-T" and add "-S" at end of part number. Fine floor casters add 1.25" to overall height. Heavy-duty casters add 2" to overall height. Leg levelers add 5/8" to overall height.

CFR Accessories



Doors: Face Mount Flat Solid

44RU	C-DAS-44
40RU	C-DAS-40
37RU	C-DAS-37
24RU	C-DAS-24



Doors: Face Mount Flat Screen

44RU	C-DAH-44
40RU	C-DAH-40
37RU	C-DAH-37
24RU	C-DAH-24



Doors: Face Mount Flat Polycarbonate

44RU	C-DAC-44
40RU	C-DAC-40
37RU	C-DAC-37
24RU	C-DAC-24



Doors: Flush Mount Flat Slotted Vents

44RU	C-DFV-44
40RU	C-DFV-40
37RU	C-DFV-37
24RU	C-DFV-24



Doors: Flush Mount Flat Solid

44RU	C-DFS-44
40RU	C-DFS-40
37RU	C-DFS-37
24RU	C-DFS-24



Side Panels: Vented with Lock

	27.5" Depth	32.5" Depth
44RU	C-SP44-275	C-SP44-325
40RU	C-SP40-275	C-SP40-325
37RU	C-SP37-275	C-SP37-325
24RU	C-SP24-275	C-SP24-325



Mounting Channels #10-32 Tapped

44RU	C-MCT-44
40RU	C-MCT-40
37RU	C-MCT-37
24RU	C-MCT-24

M6 Square Hole

44RU	C-MCS-44
40RU	C-MCS-40
37RU	C-MCS-37
24RU	C-MCS-24

Note: Mounting channels are sold in pairs. All doors have a keyed lock handle and are reversible to be left-or right-handed.

Top Panels



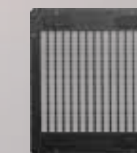
Depth	Fan	# of Fans	Fan Dia.	CFM	dB/fan
27.5"	C-TAG-24275	4	4"	240	27
32.5"	C-TAG-24325	4	4"	240	27
Depth	Fan	# of Fans	Fan Dia.	CFM	dB/fan
27.5"	C-TAH-24275	2	6"	500-596	56-61
32.5"	C-TAH-24325	2	6"	500-596	56-61
Depth	Fan	# of Fans	Fan Dia.	CFM	dB/fan
27.5"	C-TAJ-24275	1	10"	620-665	50-62
32.5"	C-TAJ-24325	1	10"	620-665	50-62

*Top panels with fans have 6' power cord.

Top panels feature four cable egress ports (1.5" W x 5" L) in the top of the panel (two front and two rear) for cable entry/exit. Top panels with fans are 115v.



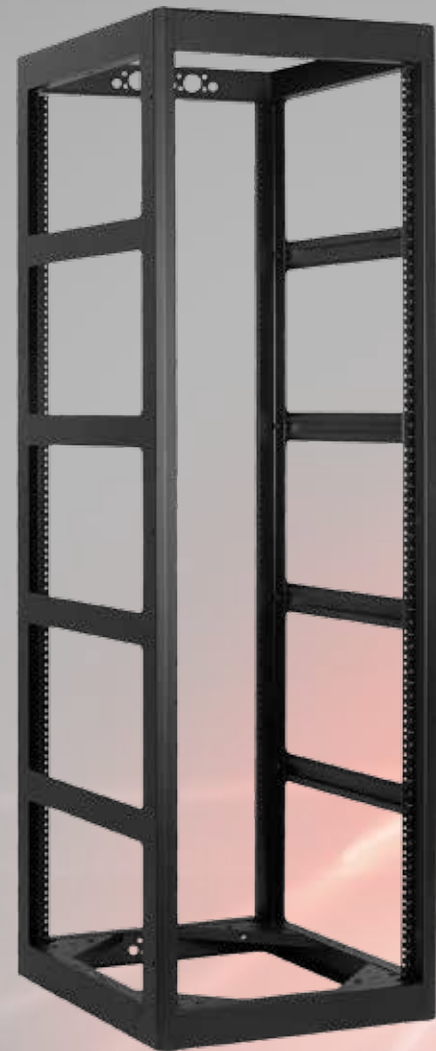
Depth	Solid
27.5"	C-TAS-24275
32.5"	C-TAS-24325



Depth	Slotted Vent
27.5"	C-TAV-24275
32.5"	C-TAV-24325

More accessories on pages 16-19.

BFR Racks



BFR

BFR racks feature fully welded construction with a load rating of 12,250lb. This rack is 22" wide and is available in rack depths of 26.5", 31.5", 36" and 42" with RU height options of 24RU, 37RU, 40RU and 44RU. They can be easily joined together or used as standalone racks. BFR racks include two pairs of fully adjustable mounting channels featuring individually numbered RUs. BFR features two knockout plates in the back of the rack, two ground studs in the caster base, four 1,000lb leg levelers and mounting hardware. BFR racks are available in any of our 10 standard colors and custom colors are available upon request.



BFR

RU Height	Overall Height	26.5" Depth (23.5" usable depth)	31.5" Depth (28.5" usable depth)	36" Depth (33" usable depth)	42" Depth (39" usable depth)
44RU (77")	82.75"	B-44-265T	B-44-315T	B-44-36T	B-44-42T
40RU (70")	75.75"	B-40-265T	B-40-315T	B-40-36T	B-40-42T
37RU (64.75")	70.5"	B-37-265T	B-37-315T	B-37-36T	B-37-42T
24RU (42")	44.75"	B-24-265T	B-24-315T	B-24-36T	B-24-42T

Note: Part numbers listed include two pairs of #10-32 Tapped Mounting Channels. For M6 Square Hole Mounting Channels, remove "-T" and add "-S" at end of part number. Fine floor casters add 1.25" to overall height. Heavy-duty casters add 2" to overall height. Leg levelers add 5/8" to overall height.

BFR Accessories



Doors: Face Mount Flat Solid

44RU	B-DAS-44
40RU	B-DAS-40
37RU	B-DAS-37
24RU	B-DAS-24



Doors: Face Mount Flat Screen

44RU	B-DAH-44
40RU	B-DAH-40
37RU	B-DAH-37
24RU	B-DAH-24



Doors: Face Mount Flat Polycarbonate

44RU	B-DAP-44
40RU	B-DAP-40
37RU	B-DAP-37
24RU	B-DAP-24



Doors: Flush Mount Flat Slotted Vents

44RU	B-DFV-44
40RU	B-DFV-40
37RU	B-DFV-37
24RU	B-DFV-24



Doors: Flush Mount Flat Solid

44RU	B-DFS-44
40RU	B-DFS-40
37RU	B-DFS-37
24RU	B-DFS-24



Side Panels: Vented with Lock

26.5" Depth | 31.5" Depth

44RU	B-SP44-265	B-SP44-315
40RU	B-SP40-265	B-SP40-315
37RU	B-SP37-265	B-SP37-315
24RU	B-SP24-265	B-SP24-315

36" Depth | 42" Depth

44RU	B-SP44-36	B-SP44-42
40RU	B-SP40-36	B-SP40-42
37RU	B-SP37-36	B-SP37-42
24RU	B-SP24-36	B-SP24-42



Mounting Channels #10-32 Tapped

44RU	B-MCT-44
40RU	B-MCT-40
37RU	B-MCT-37
24RU	B-MCT-24

M6 Square Hole

44RU	B-MCS-44
40RU	B-MCS-40
37RU	B-MCS-37
24RU	B-MCS-24

Note: Mounting channels are sold in pairs. All doors have a keyed lock handle and are reversible to be left or right-handed.

Top Panels



*Top panels with fans have 6' power cord.

Depth	Fan BTA4	# of Fans	Fan Dia.	CFM	dB/fan
26.5"	B-TAG-22265	4	4"	240	27
31.5"	B-TAG-22315	4	4"	240	27
36"	B-TAG-2236	4	4"	240	27
42"	B-TAG-2242	4	4"	240	27

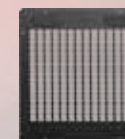
Depth	Fan BTA6	# of Fans	Fan Dia.	CFM	dB/fan
26.5"	B-TAH-22265	2	6"	500-599	56-61
31.5"	B-TAH-22315	2	6"	500-599	56-62
36"	B-TAH-2236	2	6"	500-599	56-63
42"	B-TAH-2242	2	6"	500-599	56-64

Depth	Fan BTA10	# of Fans	Fan Dia.	CFM	dB/fan
26.5"	B-TAJ-22265	1	10"	620-665	50-62
31.5"	B-TAJ-22315	1	10"	620-665	50-63
36"	B-TAJ-2236	1	10"	620-665	50-64
42"	B-TAJ-2242	1	10"	620-665	50-65



Depth | Solid

26.5"	B-TAS-22265
31.5"	B-TAS-22315
36"	B-TAS-2236
42"	B-TAS-2242



Depth | Slotted Vent

26.5"	B-TAV-22265
31.5"	B-TAV-22315
36"	B-TAV-2236
42"	B-TAV-2242

Top panels feature four cable egress ports (1.5"W x 5"L) in the top of the panel (two front and two rear) for cable entry/exit. Top panels with fans are 115v.

More accessories on pages 16-19.

EFR Racks

EFR Accessories



EFR

EFR racks feature fully welded construction with a load rating of 12,250lb. The EFR rack is 22" wide and is available in depths of 20" and 25", with RU height options of 18RU, 21RU, 27RU, 35RU, 40RU and 44RU. EFR Series racks can be easily joined together or used as standalone racks. The vented side panels are non-removable and built into each frame as a standard feature. EFR racks include two pairs of fully adjustable mounting channels featuring individually numbered RUs. EFR features two knockout plates in the back of the rack, two ground studs in the caster base, four 1,000lb leg levelers and mounting hardware. EFR racks are available in any of our 10 standard colors and custom colors are available upon request.



EFR

RU Height	Overall Height	20" Depth (17" usable depth)	25" Depth (22" usable depth)
44RU (77")	82.75"	E-44-20T	E-44-25T
40RU (70")	75.75"	E-40-20T	E-40-25T
35RU (61.25")	67"	E-35-20T	E-35-25T
27RU (47.25")	53"	E-27-20T	E-27-25T
21RU (36.75")	42.5"	E-21-20T	E-21-25T
18RU (31.5")	37.25"	E-8-20T	E-8-25T

Note: Part numbers listed include two pairs of #10-32 Tapped Mounting Channels. For M6 Square Hole Mounting Channels, remove "-T" and add "-S" at end of part number. Fine floor casters add 1.25" to overall height. Heavy-duty casters add 2" to overall height. Leg levelers add 5/8" to overall height.



Doors: Face Mount Flat Solid		Doors: Face Mount Flat Screen		Doors: Face Mount Flat Polycarbonate		Doors: Flush Mount Flat Slotted Vents		Doors: Flush Mount Flat Solid	
44RU	E-DAS-44	44RU	E-DAH-44	44RU	E-DAP-44	44RU	E-DFV-44	44RU	E-DFS-44
40RU	E-DAS-40	40RU	E-DAH-40	40RU	E-DAP-40	40RU	E-DFV-40	40RU	E-DFS-40
35RU	E-DAS-35	35RU	E-DAH-35	35RU	E-DAP-35	35RU	E-DFV-35	35RU	E-DFS-35
27RU	E-DAS-27	27RU	E-DAH-27	27RU	E-DAP-27	27RU	E-DFV-27	27RU	E-DFS-27
21RU	E-DAS-21	21RU	E-DAH-21	21RU	E-DAP-21	21RU	E-DFV-21	21RU	E-DFS-21
18RU	E-DAS-18	18RU	E-DAH-18	18RU	E-DAP-18	18RU	E-DFV-18	18RU	E-DFS-18



Mounting Channels

#10-32 Tapped | M6 Square Hole

	#10-32 Tapped	M6 Square Hole
44RU	E-MCT-44	E-MCS-44
40RU	E-MCT-40	E-MCS-40
35RU	E-MCT-35	E-MCS-35
27RU	E-MCT-27	E-MCS-27
21RU	E-MCT-21	E-MCS-21
18RU	E-MCT-18	E-MCS-18

Note: Mounting channels are sold in pairs. All doors have a keyed lock handle and are reversible to be left or right-handed.

Top Panels

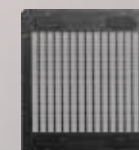


Depth	Fan	# of Fans	Fan Dia.	CFM	dB/fan
20"	E-TAG-2220	4	4"	240	27
25"	E-TAG-2225	4	4"	240	27
Depth	Fan	# of Fans	Fan Dia.	CFM	dB/fan
20"	E-TAH-2220	2	6"	500-599	56-61
25"	E-TAH-2225	2	6"	500-599	56-61
Depth	Fan	# of Fans	Fan Dia.	CFM	dB/fan
20"	E-TAJ-2220	1	10"	620-665	50-65
25"	E-TAJ-2225	1	10"	620-665	50-65

*Top panels with fans have 6' power cord.



Depth	Solid
20"	E-TAS-2220
25"	E-TAS-2225



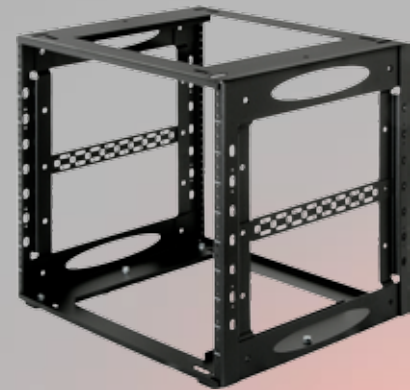
Depth	Slotted Vent
20"	E-TAV-2220
25"	E-TAV-2225

Top panels feature four cable egress ports (1.5"W x 5"L) in the top of the panel (two front and two rear) for cable entry/exit. Top panels with fans are 115v.

More accessories on pages 16-19.

FFR Racks

Color Options



FFR

FFR features fully welded construction. The FFR rack is 19.25" wide and is available in depths of 16" and 18", with RU height options of 8RU, 9RU, 10RU, 11RU, 12RU, 13RU and 14RU. The main rails are #10-32 tapped, creating a space effective design. The FFR utilizes side struts for front-to-rear cable lacing. Anchoring holes are included in the top, bottom and sides for flexible mounting to credenzas, lecterns and similar furniture. Shelves, lacing bars and other accessories are available to expand your rack's capabilities. The FFR features a durable, black powder coat finish.



FFR

RU Height	Overall Height	Overall Height with Runner	16" Depth (Useable)	18" Depth (Useable)
8RU	14.94"	15.19"	F-8-16	F-8-18
9RU	16.94"	16.94"	F-9-16	F-9-18
10RU	18.69"	18.69"	F-10-16	F-10-18
11RU	20.44"	20.44"	F-11-16	F-11-18
12RU	21.94"	22.19"	F-12-16	F-12-18
13RU	23.69"	23.94"	F-13-16	F-13-18
14RU	25.44"	25.44"	F-14-16	F-14-18

Note: Two Delrin® runners are included in base for easy in-and-out sliding without scratching furniture.

Customize your Rack System

Customizing racks with your logo provides more brand recognition to help increase your visibility to customers. We can screen-print your logo anywhere on your rack or accessory.

To customize your rack, please submit the following information to your sales representative:

- Your logo saved as a vector image (.EPS or .AI)
- Where you would like your logo to be placed
- Size of logo
- Color specifications — we can match your logo color



MEDIUM BLUE
(R112)



SILVER
(R121)



PEARL GRAY
(R122)



PEBBLE GRAY
(R123)



BLACK
(R100)



POTTERY WHITE
(R101)



LIGHT BLUE
(R111)



LIGHT BEIGE
(R131)



GUNMETAL
(R124)



CRANBERRY
(R141)

Note: Colors shown are for representational purposes only.

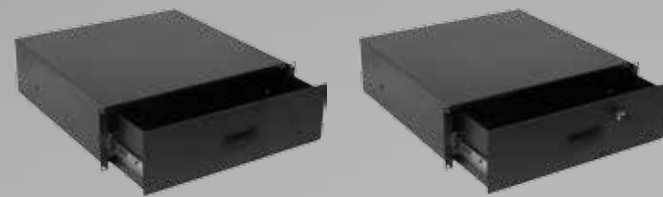
Accessories on pages 16-19.

Universal Accessories

Universal Accessories

Drawers

Peerless-AV drawers install easily to provide storage for extra cables, remote controls or media. The lock box installs easily to provide secure, key-accessible storage for your valuable AV accessories.



Drawers Solid

2RU	ACC-DR2
3RU	ACC-DR3
4RU	ACC-DR4

Drawers Solid with Lock

2RU	ACC-DR2-LK
3RU	ACC-DR3-LK
4RU	ACC-DR4-LK



Lock Box

3RU	ACC-DR3-LKF
4RU	ACC-DR4-LKF

Shelves

Our light-duty shelves are capable of supporting components up to 50lb, with the exception of the 1RU shelf that holds 15lb. They are designed with vents to keep equipment cool. Hold-down brackets can be ordered separately for previously purchased shelves. Vented shelves with hold-down brackets hold components safely in place.

Our heavy-duty shelves are adjustable from 17" to 40".

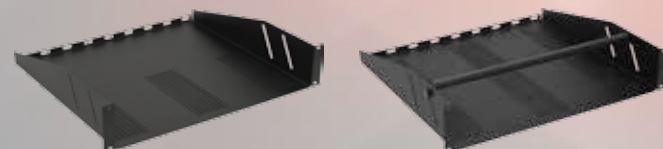


Shelves Retractable

2RU	ACC-RS2
3RU	ACC-RS3

Shelves Solid Front Face

1RU	ACC-VS1
2RU	ACC-VS2

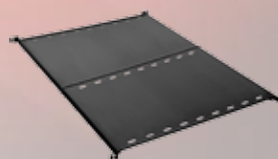


Shelves Vented

1RU	ACC-SH1
2RU	ACC-SH2
3RU	ACC-SH3
4RU	ACC-SH4
5RU	ACC-SH5

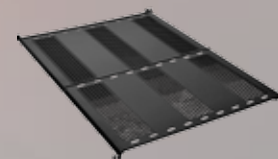
Shelves Vented with Hold-Down Bracket

1RU	ACC-SH1B
2RU	ACC-SH2B
3RU	ACC-SH3B
4RU	ACC-SH4B
5RU	ACC-SH5B



Solid

ACC-AS1725
ACC-AS2540

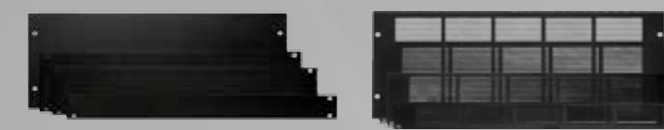


Vented

ACC-AV1725
ACC-AV2540

Blanking Panels

Solid blanking panels serve both form and function, filling out empty rack space and directing air where needed. Vented blanking panels allow heat produced by components to dissipate while covering any blank space between components. Formed blanking panels are aluminum and also available individually or in kits.



Solid Blanking Panels

1RU	ACC-S1
2RU	ACC-S2
3RU	ACC-S3
4RU	ACC-S4
5RU	ACC-S5

Vented Blanking Panels

1RU	ACC-HS1
2RU	ACC-HS2
3RU	ACC-HS3
4RU	ACC-HS4
5RU	ACC-HS5



Formed Blanking Panels

1U	ACC-FBP1
2U	ACC-FBP2
3U	ACC-FBP3
4U	ACC-FBP4
5U	ACC-FBP5
6U	ACC-FBP6

Formed Blanking Panel Kits

1U Kit 12 pcs	ACC-FBP1-K
2U Kit 12 pcs	ACC-FBP2-K
3U Kit 6 pcs	ACC-FBP3-K
4U Kit 6 pcs	ACC-FBP4-K

Adjustable Chassis Guides

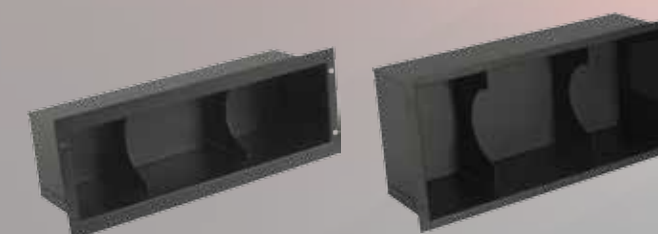
Chassis guides have a 2"H x 2"W profile and are fully adjustable from 20" through 42". The flanges support component-mounted hardware in a minimal profile. Chassis guides support up to 125lb.



ACC-CG2030 (20" to 30" depths)
ACC-CG3142 (31" to 42" depths)

CD and DVD Holders

CD and DVD holders are available to keep your AV system organized while providing easy and immediate access to your favorite music and video selections. CD holders are 4RU in height and feature a durable black powder coat finish. DVD holders are 5RU with the same durable powder coat finish.



CD Holder
ACC-CD4

DVD Holder
ACC-DVD5

Don't see your accessory? Just ask. We do custom manufacturing.

Universal Accessories

1RU Fan Stack

Ultra-Quiet Fans with Front Exhaust



Fan stack units provide active cooling for your electronic components within the rack. These units install as easily as a shelf and have a five-foot power cord. Fans turn on from 83°-85° keeping components cool.

	CFM (total)	DB	Voltage	# of Fans	Fan Diameter	Depth
ACC-FS8	120	27	115	2	4.75"	8"
ACC-FS14	120	27	115	2	4.75"	14"

Fan Panel

Ultra-Quiet Fans



Fan panels provide active cooling for your electronic components within the rack. These units install as easily as a blanking panel and have a five-foot power cord. Fans turn on from 83°-85° keeping components cool.

	CFM (total)	DB	Voltage	# of Fans	Fan Diameter	Rack Height
ACC-QF2-2	50	28	115	2	3"	2RU
ACC-QF2-4	100	28	115	4	3"	2RU
ACC-QF3-2	120	27	115	2	4.75"	3RU

Digital Display Fan Panel

Ultra-Quiet Fans with Display



Fan panels with a digital display allow you to set the sensor to a specific temperature range of 58° to a programmable max and have a six-foot power cord. This ensures that your electronic components will operate at peak performance.

	CFM (total)	DB	Voltage	# of Fans	Fan Diameter	Rack Height
ACC-QFD2-2	50	28	115	2	3"	2RU
ACC-QFD2-4	100	28	115	4	3"	2RU
ACC-QFD2-3	120	27	115	2	4.75"	3RU

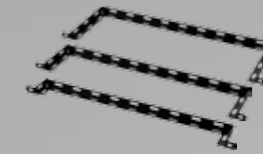
Power Strips

Power cords are 10 feet long.

	Circuits	NEMA Outlet Type	NEMA Plug Type	Voltage	Number of Outlets
ACC-PV (vertical 48" long)	(1) 15 amp	5-15r	5-15A	115	12
ACC-HP (horizontal 17" long)	(1) 15 amp	5-15r	5-15A	115	6

Note: Fan panels, fan stacks and power strips are available only in a durable, black powder coat finish.

Universal Accessories

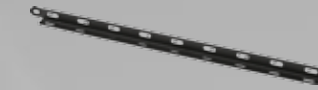


Lacing Bar "C" Style

ACC-LBS

ACC-LB4

ACC-LB6



Lacing Bar Straight Style

ACC-LB3



Round Lacing Bar

ACC-LBR2

Lacing Bars

Lacing bars are available in packs of five.



Vertical Cable Lacing Strip 5" Wide

ACC-CLS44

ACC-CLS40

ACC-CLS37

ACC-CLS35

ACC-CLS27

ACC-CLS24

ACC-CLS21

ACC-CLS18



Adjustable Lacing Strip

1RU

ACC-LB1421 (14"-21" depth)

ACC-LB2537 (25"-37" depth)

2RU

ACC-LB1421-2U (14"-21" depth)

ACC-LB2537-2U (25"-37" depth)

Lacing Strips

Vertical cable lacing strips provide mounting support for PDUs and cabling. Horizontal cable lacing strips provide cable management of the side or rear of the frame. Cable lacing strips have a combination of M6 holes for cable ring mounting (HK-CR1) or equipment tie-down, while the slots can accept cable ties, fasteners, etc. Lacing strips are sold individually.



Fine Floor Caster

ACC-C125



Heavy Duty Caster

ACC-C660

Casters

Fine floor casters have a load rating of 120lb each and add 1.25" to overall height. Heavy-duty casters have a load rating of 600lb each and add 2" to overall height.



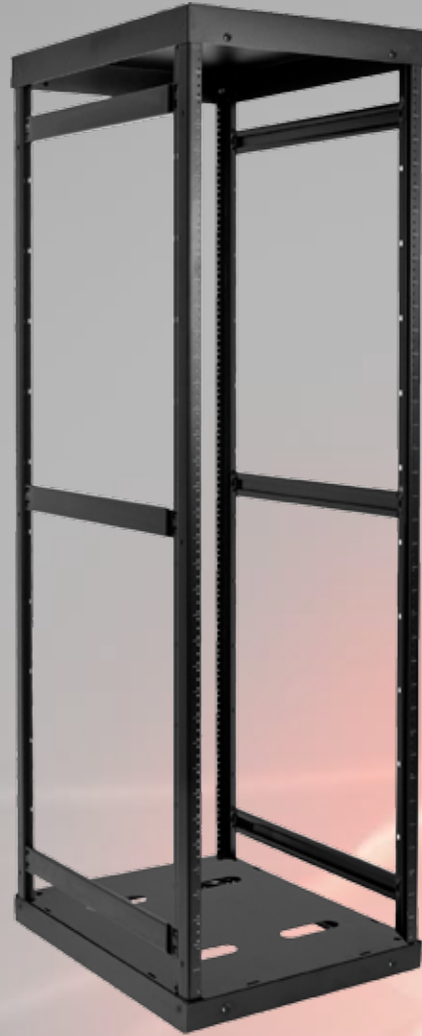
Joining Kit

ACC-130

Joining Kit

Join racks together using simple #1/4-20 hex and lock nut hardware.

Don't see your accessory? Just ask. We do custom manufacturing.



QER Knock Down Frames

QER was designed to provide safe and secure mounting for all AV equipment while saving the installer valuable time at every job site. QER is available in depths of 20" and 26" with RU heights of 8RU, 14RU, 21RU, 29RU, 37RU and 43RU. The open-frame design provides stability and makes assembly quick and easy. Shelves and other components can be added in minutes with the help of silk-screened RU markings. QER is UL certified to 600lb, assembles in minutes and available in pre-configured kits. QER features a durable, black powder coat finish.



QER Knock Down Frames

RU Height	20" Depth	26" Depth
43RU	Q-43-20	Q-43-26
37RU	Q-37-20	Q-37-26
29RU	Q-29-20	Q-29-26
21RU	Q-21-20	Q-21-26
14RU	Q-14-20	Q-14-26
8RU	Q-8-20	Q-8-26

QER Kits

QER kits come equipped with shelves that are ventilated for heat dissipation, keeping your AV components cool and running smoothly. Kits also include a drawer for safe, convenient storage of your extra cables, remote controls or other media. Fine floor casters make moving your rack smooth and simple. The kit comes in both 20" and 26" depths, offers optional horizontal or vertical power strips and ships flat.



Q-K12926

Note: Overall height includes 1" for fine floor casters in kit. For 26" depths, remove "20" and add "26" to the end of the part number. (i.e. Q-K1-4320 becomes Q-K1-4326) For horizontal power remove "K1" add a "K2" in the part number. (i.e. Q-K1-4326 becomes Q-K2-4326) For vertical power, remove "K1" and add "K3" in the part number. (i.e. Q-K1-4326 becomes Q-K3-4326)

Part Number	Load Rating	Overall Height	20" Depth Accessories	26" Depth Accessories
Q-K1-4320	600lb	81.75"	Side Struts (6) 2RU Vented Shelf (4) 3RU Drawer (1) Lacing Bars (10) Casters Hardware (125 screws)	Side Struts (6) 2RU Vented Shelf (4) 3RU Drawer (1) Lacing Bars (10) Casters Hardware (125 screws) Split Rails (1 pair)
Q-K1-3720	600lb	71.25"	Side Struts (6) 2RU Vented Shelf (4) 3RU Drawer (1) Lacing Bars (10) Casters Hardware (125 screws)	Side Struts (6) 2RU Vented Shelf (4) 3RU Drawer (1) Lacing Bars (10) Casters Hardware (125 screws) Split Rails (1 pair)
Q-K1-2920	600lb	57.25"	Side Struts (4) 2RU Vented Shelf (3) 3RU Drawer (1) Lacing Bars (5) Casters Hardware (125 screws)	Side Struts (4) 2RU Vented Shelf (3) 3RU Drawer (1) Lacing Bars (10) Casters Hardware (125 screws) Split Rails (1 pair)
Q-K1-2120	500lb	43.25"	Side Struts (4) 2RU Vented Shelf (2) 3RU Drawer (1) Lacing Bars (5) Casters Hardware (125 screws)	Side Struts (4) 2RU Vented Shelf (2) 3RU Drawer (1) Lacing Bars (10) Casters Hardware (125 screws) Split Rails (1 pair)
Q-K1-1420	350lb	31"	Side Struts (4) 2RU Vented Shelf (1) 3RU Drawer (1) Lacing Bars (5) Casters Hardware (125 screws)	Side Struts (4) 2RU Vented Shelf (1) 3RU Drawer (1) Lacing Bars (10) Casters Hardware (125 screws) Split Rails (1 pair)
Q-K1-820	200lb	20.5"	Side Struts (4) 2RU Vented Shelf (1) 3RU Drawer (1) Lacing Bars (5) Casters Hardware (125 screws)	Side Struts (4) 2RU Vented Shelf (1) 3RU Drawer (1) Lacing Bars (10) Casters Hardware (125 screws) Split Rails (1 pair)

More accessories for QER on pages 16-19.

QER Accessories

QER Accessories



**Doors:
Solid Flat**

43RU	Q-SFD-43
37RU	Q-SFD-37
29RU	Q-SFD-29
21RU	Q-SFD-21
14RU	Q-SFD-14
8RU	Q-SFD-8



**Doors:
Polycarbonate Flat**

43RU	Q-FD-43
37RU	Q-FD-37
29RU	Q-FD-29
21RU	Q-FD-21
14RU	Q-FD-14
8RU	Q-FD-8



**Doors:
Vented Flat**

43RU	Q-VFD-43
37RU	Q-VFD-37
29RU	Q-VFD-29
21RU	Q-VFD-21
14RU	Q-VFD-14
8RU	Q-VFD-8



Rear Panels

43RU	Q-SRP-43
37RU	Q-SRP-37
29RU	Q-SRP-29
21RU	Q-SRP-21
14RU	Q-SRP-14
8RU	Q-SRP-8



**Doors:
Solid Curved**

43RU	Q-SCD-43
37RU	Q-SCD-37
29RU	Q-SCD-29
21RU	Q-SCD-21
14RU	Q-SCD-14
8RU	Q-SCD-8



**Doors:
Polycarbonate Curved**

43RU	Q-CD-43
37RU	Q-CD-37
29RU	Q-CD-29
21RU	Q-CD-21
14RU	Q-CD-14
8RU	Q-CD-8



**Doors:
Vented Curved**

43RU	Q-VCD-43
37RU	Q-VCD-37
29RU	Q-VCD-29
21RU	Q-VCD-21
14RU	Q-VCD-14
8RU	Q-VCD-8



**Side Panels:
20"/26" Depth**

43RU	Q-SP-43	Q-SP-4326
37RU	Q-SP-37	Q-SP-3726
29RU	Q-SP-29	Q-SP-2926
21RU	Q-SP-21	Q-SP-2126
14RU	Q-SP-14	Q-SP-1426
8RU	Q-SP-8	Q-SP-826

Note: Side panels are sold in pairs.



Cable Raceway

43RU	Q-CR-43
37RU	Q-CR-37
29RU	Q-CR-29
21RU	Q-CR-21
14RU	Q-CR-14
8RU	Q-CR-8



Joining Kit

43RU	Q-JK-43
37RU	Q-JK-37
29RU	Q-JK-29
21RU	Q-JK-21
14RU	Q-JK-14
8RU	Q-JK-8



Split Rail

43RU	Q-SR-43
37RU	Q-SR-37
29RU	Q-SR-29
21RU	Q-SR-21
14RU	Q-SR-14
8RU	Q-SR-8

Lacing Bar

Straight	Q-ACC-LB
"C" Style	Q-ACC-LB2

Cable Raceway

Cable raceways are 3" wide and keep your AV cables organized and out of sight while facilitating easy management.

Joining Kit

Joining kits allow you to take advantage of Peerless-AV's joinable design and gang multiple racks together.



Front Trim Strip



With Trim Strip



Without Trim Strip

Front Trim Strip

Q-TR-43
Q-TR-37
Q-TR-29
Q-TR-21
Q-TR-14
Q-TR-8

The snap-in front trim strip provides a clean, contemporary design aesthetic for any rack by covering up equipment-mounting hardware screws and RU markings. They are available in the same heights as corresponding racks.

Trim Kits

Trim Kits provide a contemporary design aesthetic for QER. Choose from either a curved or flat trim kit that mounts easily to the top and bottom of the rack. (Doors can also be added curved or flat to match the frame aesthetic.)



Flat



Curved



No Trim Kit



**Flat Trim Kit
Q-ACC-FTK**



**Curved Trim Kit
Q-ACC-CTK**

More accessories for QER on pages 16-19.



205 Westwood Ave, Long Branch, NJ 07740
Phone: 866-94 BOARDS (26273) / (732)-222-1511
Fax: (732)-222-7088 | E-mail: sales@touchboards.com

AV Racks & Accessories



Peerless-AV

2300 White Oak Circle
Aurora, IL 60502 USA
Toll Free: 800-865-2112
P: 630-375-5100
F: 800-359-6500
sales@peerless-av.com

racks.peerless-av.com

Follow us on     