

ST940-EXA(-W)
ST940-EXB(-W)
ST940-EXC(-W)



Display size
Up to 40"



Max load
55lb (25kg)

SMARTMOUNT.

Ceiling Mount

UP TO 40" DISPLAYS

The slim design of Peerless-AV's new Ceiling Mount offers the ideal extendable mounting solution and enhances the professional look of your display. The tool-less adjustable extension column minimizes the mount's appearance, while maximizing the screen's presence in any room. Internal cable management provides a sleek, stylized contemporary look. The mount comes partially pre-assembled for a fast and easy installation. The mounts design allows the screen to be tilted up to 20°, and installed in either portrait or landscape orientation, making this mount ideal for dental offices, medical facilities, and digital signage applications.

The ST940's tool-less height and tilt adjustment offers flexible placement options, ideal for many digital signage applications.



Additional Features

- ✓ 3 length sizes to choose from make it easy to get the optimum placement
- ✓ Continuous +20° tilt and 360° swivel
- ✓ Cosmetic cover provides an attractive finish and compliments the décor of any room
- ✓ Tool-less height and tilt adjustment provides quick setup and simple maintenance
- ✓ Multiple cable management options are provided, which allow either routing of the cables through the center of the ceiling plate, or through the removable electrical knockouts in the ceiling plate cover



Tool-Less height and image adjustment



Internal cable management



ST940-EXA(-W)	SmartMount® Ceiling Mount for up to 40" Displays with 16.54"-21.55" (420-547mm) height adjustment
ST940-EXB(-W)	SmartMount® Ceiling Mount for up to 40" Displays with 21.52"-30.76" (547-781mm) height adjustment
ST940-EXC(-W)	SmartMount® Ceiling Mount for up to 40" Displays with 29.80"-46.91" (757-1192mm) height adjustment

Product Specifications

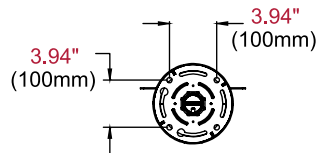
	DIMENSIONS (W x H x D)	PRODUCT WEIGHT	LOAD CAPACITY	FINISH	AVAILABLE COLORS
ST940-EXA(-W)	8.75" x 16.54"-21.55" x 6.69" (222 x 420-547 x 170mm)	4.2lb (1.91kg)	55lb (25kg)	Powder Coat	ST940-EXA/EXB/EXC: Black ST940-EXA-W/EXB-W/EXC-W: White
ST940-EXB(-W)	8.75" x 21.52"-30.76" x 6.69" (222 x 547-781 x 170mm)	4.8lb (2.18kg)			
ST940-EXC(-W)	8.75" x 29.80"-46.91" x 6.69" (222 x 757-1192 x 170mm)	5.5lb (2.5kg)			

Package Specifications

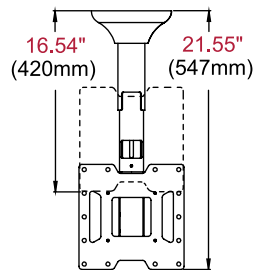
	PACKAGE SIZE (W x H x D)	PACKAGE SHIP WEIGHT	PACKAGE UPC CODE	PACKAGE CONTENTS	UNITS IN PACKAGE
ST940-EXA(-W)	15.50" x 7.25" x 9.50" (394 x 184 x 241mm)	5.6lb (2.55kg)	ST940-EXA: 735029303497 ST940-EXA-W: 735029303503	Mount, ceiling plate cover, mounting hardware & instructions	1
ST940-EXB(-W)	15.50" x 7.25" x 9.50" (394 x 184 x 241mm)	6.2lb (2.82kg)	ST940-EXB: 735029303510 ST940-EXB-W: 735029303527		
ST940-EXC(-W)	23.75" x 7.25" x 9.50" (603 x 184 x 241mm)	7.6lb (3.45kg)	ST940-EXC: 735029303534 ST940-EXC-W: 735029303541		

Accessories

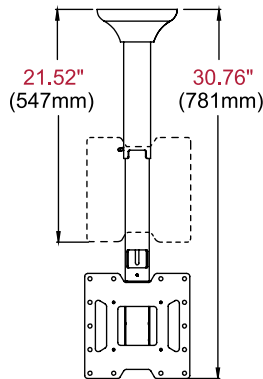
PLP-UNM: Universal Adaptor Bracket for 22" to 50" Displays



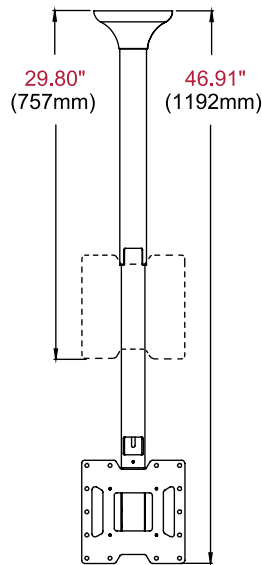
TOP VIEW



**ST940-EXA
EXTENDED/RETRACTED**

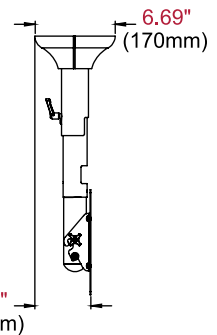


**ST940-EXB
EXTENDED/RETRACTED**

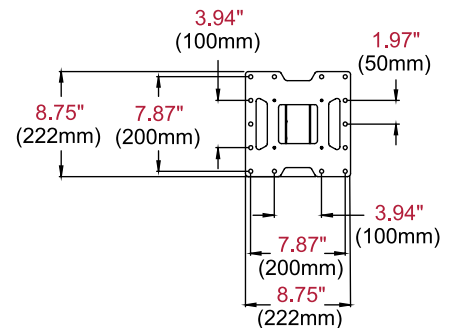


**ST940-EXC
EXTENDED/RETRACTED**

All dimensions = inch (mm)



SIDE VIEW



ADAPTOR PLATE

Architect Specifications

The Smartmount® Ceiling Mount shall be a Peerless-AV model ST940-EXA(-W), ST940-EXB(-W) or ST940-EXC(-W) and shall be located where indicated on the plans. Assembly and installation shall be done according to instructions provided by the manufacturer.

Visit peerless-av.com to see the complete line of AV solutions from Peerless-AV, including outdoor displays, wireless, kiosks, digital audio, display mounts, projector mounts, carts/stands, and a full assortment of accessories.

Peerless-AV
2300 White Oak Circle
Aurora, IL 60502 USA

(800) 865-2112
(630) 375-5100
Fax: (800) 359-6500

Peerless-AV Europe
Unit 3 Watford Interchange
Colonial Way, Watford
Herts, WD24 4WP
United Kingdom
+44 (0) 1923 200100
Fax: +44 (0) 1923 200101

Peerless-AV de México
Ave de las Industrias 413
Parque Industrial Escobedo
Escobedo, N.L.,
Mexico 66050
+52 (81) 8384-8300
Fax: +52 (81) 8384-8360

peerless-AV®